

Converting Colors

Hex(4E3C2D)

Have a look what the booklet for
Hex(4E3C2D) contains.

Hex(4E3C2D)	3
<i>Conversions</i>	4
<i>Details</i>	6
<i>Harmonies</i>	11
<i>Previews</i>	23
<i>Color Blindness Simulation</i>	26
<i>CSS Examples</i>	29

Color

Hex(4E3C2D)

Conversions

Conversions Part 1

Format	Color
Hex	4E3C2D
RGB	78, 60, 45
RGB Percent	31%, 24%, 18%
CMY	0.6941, 0.7647, 0.8235
CMYK	0.00, 0.23, 0.42, 0.69
HSL	27°, 27%, 24%
HSV	27°, 42%, 31%
XYZ	5.2314, 5.0409, 3.1799
YIQ	63.6720, 15.5430, -0.8490

Conversions

Conversions Part 2

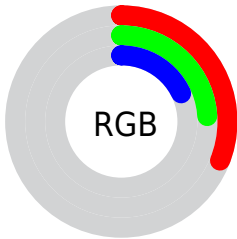
Format	Color
RYB	78, 73, 45
Decimal	5127213
CIELab	26.85, 5.49, 12.29
CIElCh	27, 13.461, 65.924
Yxy	5.0409, 0.3889, 0.3747
Android (android.graphics.Color)	4283317293 (0xFF4E3C2D)
YUV	63.6720, -9.2053, 12.5657
Hunter-Lab	22.4519, 2.3005, 7.3190

Details

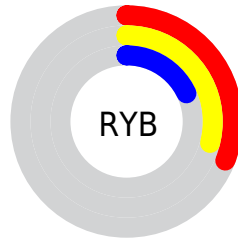
The Hex color **4E3C2D** is a dark color, and the websafe version is hex **333333**. A complement of this color would be **2D3F4E**, and the grayscale version is **404040**.

A 20% lighter version of the original color is **806B5B**, and **221200** is the 20% darker color. If you saturate the color by 10%, you get **4E3825**, and if you desaturate by 10%, it is **4E4035**.

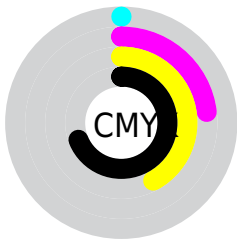
Distribution



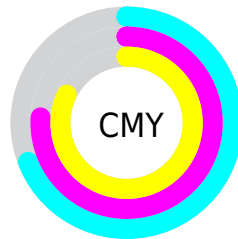
- Red (31%)
- Green (24%)
- Blue (18%)



- Red (31%)
- Yellow (29%)
- Blue (18%)



- Cyan (0%)
- Magenta (23%)
- Yellow (42%)
- Black (69%)



- Cyan (69%)
- Magenta (76%)
- Yellow (82%)

Brightness & Saturation Gradients

These gradients show how the Hex color 4E3C2D changes by changing the brightness by 10 percent. The first figure shows a shift by +10% for each color and the second figure -10%.

Similar to the brightness gradients but the following saturation gradients show a change of the Hex color 4E3C2D by changing the saturation by 10% instead.



4E3C2D



4E3C2D

FFFFFF



372618



806B5B



221200



9A8473



000000



B59F8D



D1BAA7



EED5C3



FFF2DE



FFFFFB



4E3C2D



4E3C2D

■ 4E3825

■ 4E4035

■ 4E331D

■ 4E453D

■ 4E2F16

■ 4E4944

■ 4E2B0E

■ 4E4D4C

■ 4E2706

■ 4E5154

■ 4E2300

■ 4E565C

■ 4E5A64

■ 4E5E6B

■ 4E6273

Harmonies

Analogous

The Analogous color harmony consists of three colors that are next to each other on the color wheel.



533934



4E3C2D



453F2B

Triad

The Triadic color harmony groups three colors that are evenly spaced from another and form a triangle on the color wheel.



4E3C2D



244541



443C50

Complementary

The Complementary color scheme is a pair of colors which are on the opposite of each other on the color wheel.



4E3C2D



2D3F4E

Split Complementary

Split-complementary colors differ from the complementary color scheme. The scheme consists of three colors, the original color and two neighbors of the complement color.



354054



4E3C2D



20454B

Square

The Square scheme is like the rectangle color scheme, but the four colors are evenly spaced on the color wheel.



4E3C2D



2E4437



284352



4E3948

Rectangle

The Rectangle color scheme consists of four colors that form a rectangle on the color wheel.



4E3C2D



3D422D



284352



3F3D52

Sweetspot

The Sweet Spot groups the original color and five complimentary colors.



4E3C2D



665F59



4E2D3F



332F2B



B3B3B3



333333

Same Dimension

The Same Dimension uses a secret algorithm to generate beautiful new colors.



4E3C2D



664A32



4E4C2D



262422



662E00



E66800

Inverse Universe

The Inverse Universe completely reimagines the original color for something new.



2D3F4E



324E66



2D2F4E



222526



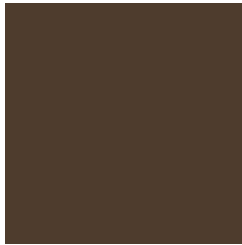
003866



007DE6

Previews

White Background



This preview shows how the Hex color 4E3C2D looks on a white background.

Color Contrast Check

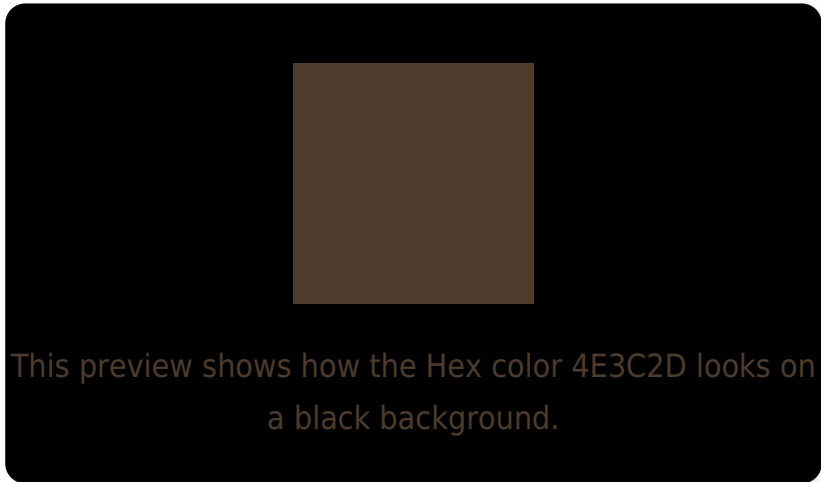
Large Text (above 18pt) WCAG AA ✓ Pass

Any Text WCAG AA ✓ Pass

Large Text (above 18pt) WCAG AAA ✓ Pass

Any Text WCAG AAA ✓ Pass

Black Background



Color Contrast Check

Large Text (above 18pt) WCAG AA × Fail

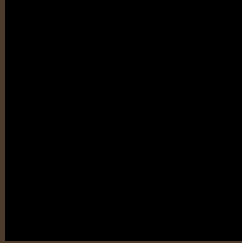
Any Text WCAG AA × Fail

Large Text (above 18pt) WCAG AAA × Fail

Any Text WCAG AAA × Fail

If you want to check with other color combinations, try the [Color Contrast Checker](#).

Hex 4E3C2D Background



This preview shows how black text looks on a background with the Hex color 4E3C2D.

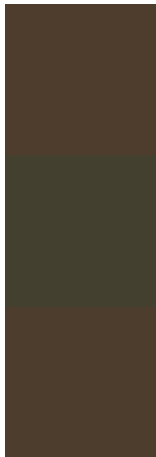


This preview shows how white text looks on a background with the Hex color 4E3C2D.

Color Blindness Simulation

Color vision deficiency is a very complex topic, and I could not describe the different causes any better than Wikipedia does, so if you want to learn more, you should check out their [article about color blindness](#).

Dichromacy



Original Color
4E3C2D

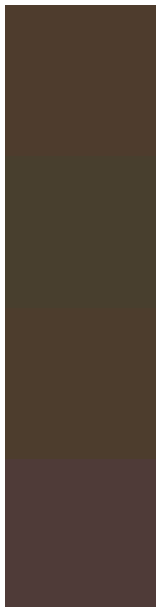
Protanopia
44402F

Deuteranopia
4C3D2D



Tritanopia
503A3E

Trichromacy



Original Color

4E3C2D

Protanomaly

483F2E

Deuteranomaly

4D3D2D

Tritanomaly

4F3B38

Monochromacy



Original Color

4E3C2D

Achromatopsia

404040

Achromatomaly

453F39

CSS Examples

Text

The CSS property to change the color of the text to Hex 4E3C2D is called "color". The color property can be set on classes, ids or directly on the HTML element.

This example shows how text in the color #4E3C2D looks like.

```
.text, #text, p{  
    color:#4E3C2D  
}
```

If you want to add a text shadow in that color use the text-shadow property, you can generate a text shadow directly with our [CSS Text Shadow Generator](#).

Here you see how black text with a 4 pixel #4E3C2D colored shadow looks like.

```
.shadow{ text-shadow: 4px 4px 2px #4E3C2D
}
```

Border

The CSS property to change the border of an element to Hex 4E3C2D is called "border". The border property can be set on classes, ids or directly on the HTML element.

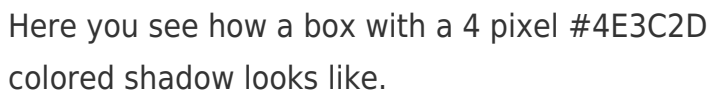
This example shows the color as border, it can be applied via the CSS property "border" or "border-color".

```
.border, #border, table{ border:4px solid
#4E3C2D }
```

If only the border color should be changed use the property `border-color`.

```
.border{ border-color:#4E3C2D }
```

If you want to add a box shadow in that color use:



Here you see how a box with a 4 pixel #4E3C2D colored shadow looks like.

```
.boxshadow{ -moz-box-shadow:4px 4px 4px  
4px #4E3C2D; -webkit-box-shadow:4px 4px  
4px 4px #4E3C2D; box-shadow:4px 4px 4px  
4px #4E3C2D }
```

Background

The CSS property to change the background color of an element to Hex 4E3C2D is called "background". The background property can be set on classes, ids or directly on the HTML element.

```
.background, #background, body{  
background:#4E3C2D }
```

If only the background color should be changed can be used:

```
.background{ background-color:#4E3C2D }
```

This example shows the color as background, it is applied via the CSS property "background".

To optimize and compress your CSS code, you can use our [online CSS compressor and optimizer](#) based on csstidy. If you want to create a linear or radial gradient as background or border, check our [CSS Gradient Generator](#).

Hey! You found this booklet interesting? Support Converting Colors with the new Membership Option!

The pro membership hides all ads, plus gives you double the colors in the color bucket, and more awesome pro features!

[Learn more, Memberships starting at \\$2.50/m!](#)

**Follow me
on Twitter!**

@ConvertingColor