

Converting Colors

Hex(4F2519)

Have a look what the booklet for
Hex(4F2519) contains.

| | |
|--|----|
| Hex(4F2519) | 3 |
| <i>Conversions</i> | 4 |
| <i>Details</i> | 6 |
| <i>Harmonies</i> | 11 |
| <i>Previews</i> | 23 |
| <i>Color Blindness Simulation</i> | 26 |
| <i>CSS Examples</i> | 29 |

Color

Hex(4F2519)

Conversions

Conversions Part 1

| Format | Color |
|-------------|--------------------------|
| Hex | 4F2519 |
| RGB | 79, 37, 25 |
| RGB Percent | 31%, 15%, 10% |
| CMY | 0.6902, 0.8549, 0.9020 |
| CMYK | 0.00, 0.53, 0.68, 0.69 |
| HSL | 13°, 52%, 20% |
| HSV | 13°, 68%, 31% |
| XYZ | 4.0615, 3.0556, 1.2954 |
| YIQ | 48.1900, 28.8840, 5.1720 |

Conversions

Conversions Part 2

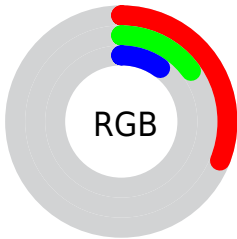
| Format | Color |
|-------------------------------------|-------------------------------|
| R_{YB} | 79, 40, 25 |
| Decimal | 5186841 |
| CIE _{Lab} | 20.27, 18.49, 16.87 |
| CIE _{LCh} | 20, 25.028, 42.376 |
| Yxy | 3.0556, 0.4828, 0.3632 |
| Android (android.graphics.Color) | 4283376921 (0xFF4F2519) |
| YUV | 48.1900, -11.4327, 27.0204 |
| Hunter-Lab | 17.4802, 10.8836, 7.8423 |

Details

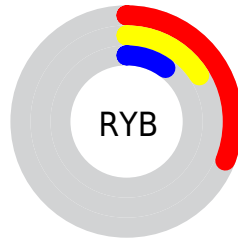
The Hex color **4F2519** is a dark color, and the websafe version is hex **663333**. A complement of this color would be **19434F**, and the grayscale version is **303030**.

A 20% lighter version of the original color is **835344**, and **210001** is the 20% darker color. If you saturate the color by 10%, you get **4F1F11**, and if you desaturate by 10%, it is **4F2B21**.

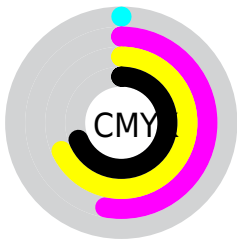
Distribution



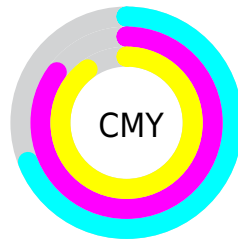
- Red (31%)
- Green (15%)
- Blue (10%)



- Red (31%)
- Yellow (16%)
- Blue (10%)



- Cyan (0%)
- Magenta (53%)
- Yellow (68%)
- Black (69%)



- Cyan (69%)
- Magenta (85%)
- Yellow (90%)

Brightness & Saturation Gradients

These gradients show how the Hex color 4F2519 changes by changing the brightness by 10 percent. The first figure shows a shift by +10% for each color and the second figure -10%.

Similar to the brightness gradients but the following saturation gradients show a change of the Hex color 4F2519 by changing the saturation by 10% instead.



4F2519



4F2519

FFFFFFC



370F00



835344



210001



9E6B5C



000000



BA8575



D79F8E



F4BAA9



FFD6C4



FFF2E0



4F2519



4F2519

■ 4F1F11

■ 4F2B21

■ 4F1909

■ 4F3129

■ 4F1301

■ 4F3731

■ 4F1200

■ 4F3E39

■ 4F4441

■ 4F4A48

■ 4F5050

■ 4F5658

■ 4F5C60

Harmonies

Analogous

The Analogous color harmony consists of three colors that are next to each other on the color wheel.



53212A



4F2519



442C0C

Triad

The Triadic color harmony groups three colors that are evenly spaced from another and form a triangle on the color wheel.



4F2519



003925



1D3055

Complementary

The Complementary color scheme is a pair of colors which are on the opposite of each other on the color wheel.



4F2519



19434F

Split Complementary

Split-complementary colors differ from the complementary color scheme. The scheme consists of three colors, the original color and two neighbors of the complement color.



003654



4F2519



003A38

Square

The Square scheme is like the rectangle color scheme, but the four colors are evenly spaced on the color wheel.



4F2519



1F3714



003949



3C294C

Rectangle

The Rectangle color scheme consists of four colors that form a rectangle on the color wheel.



4F2519



3A3009



003949



0C3255

Sweetspot

The Sweet Spot groups the original color and five complimentary colors.



4F2519



665551



4F1943



332926



B3B3B3



333333

Same Dimension

The Same Dimension uses a secret algorithm to generate beautiful new colors.



4F2519



662512



4F4019



262322



661700



E63300

Inverse Universe

The Inverse Universe completely reimagines the original color for something new.



19434F



125366



19284F



222526



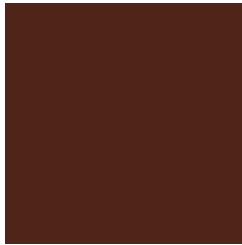
004F66



00B3E6

Previews

White Background



This preview shows how the Hex color 4F2519 looks on a white background.

Color Contrast Check

Large Text (above 18pt) WCAG AA ✓ Pass

Any Text WCAG AA ✓ Pass

Large Text (above 18pt) WCAG AAA ✓ Pass

Any Text WCAG AAA ✓ Pass

Black Background



Color Contrast Check

Large Text (above 18pt) WCAG AA × Fail

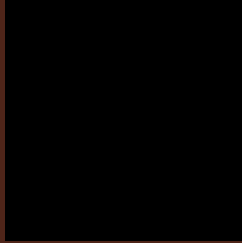
Any Text WCAG AA × Fail

Large Text (above 18pt) WCAG AAA × Fail

Any Text WCAG AAA × Fail

If you want to check with other color combinations, try the [Color Contrast Checker](#).

Hex 4F2519 Background



This preview shows how black text looks on a background with the Hex color 4F2519.

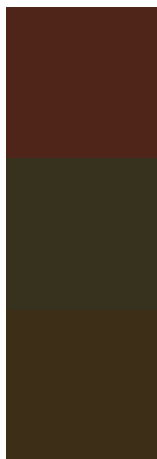


This preview shows how white text looks on a background with the Hex color 4F2519.

Color Blindness Simulation

Color vision deficiency is a very complex topic, and I could not describe the different causes any better than Wikipedia does, so if you want to learn more, you should check out their [article about color blindness](#).

Dichromacy



Original Color
4F2519

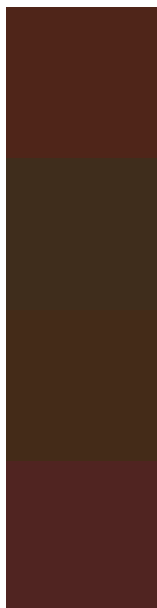
Protanopia
36321D

Deuteranopia
3D2F17



Tritanopia
502326

Trichromacy



Original Color

4F2519

Protanomaly

3F2D1C

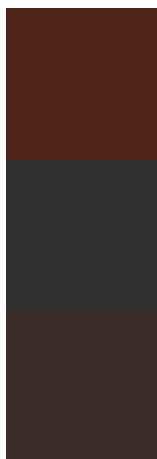
Deuteranomaly

442B18

Tritanomaly

502421

Monochromacy



Original Color

4F2519

Achromatopsia

303030

Achromatomaly

3B2C28

CSS Examples

Text

The CSS property to change the color of the text to Hex 4F2519 is called "color". The color property can be set on classes, ids or directly on the HTML element.

This example shows how text in the color #4F2519 looks like.

```
.text, #text, p{  
    color:#4F2519  
}
```

If you want to add a text shadow in that color use the text-shadow property, you can generate a text shadow directly with our [CSS Text Shadow Generator](#).

Here you see how black text with a 4 pixel #4F2519 colored shadow looks like.

```
.shadow{ text-shadow: 4px 4px 2px #4F2519
}
```

Border

The CSS property to change the border of an element to Hex 4F2519 is called "border". The border property can be set on classes, ids or directly on the HTML element.

This example shows the color as border, it can be applied via the CSS property "border" or "border-color".

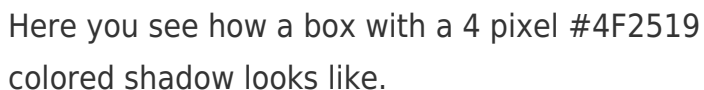
```
.border, #border, table{ border:4px solid
#4F2519 }
```

If only the border color should be changed use the property `border-color`.

```
.border{ border-color:#4F2519 }
```

If you want to add a box shadow in that color use:

Here you see how a box with a 4 pixel #4F2519 colored shadow looks like.



```
.boxshadow{ -moz-box-shadow:4px 4px 4px  
4px #4F2519; -webkit-box-shadow:4px 4px  
4px 4px #4F2519; box-shadow:4px 4px 4px  
4px #4F2519 }
```

Background

The CSS property to change the background color of an element to Hex 4F2519 is called "background". The background property can be set on classes, ids or directly on the HTML element.

```
.background, #background, body{  
background:#4F2519 }
```

If only the background color should be changed can be used:

```
.background{ background-color:#4F2519 }
```

This example shows the color as background, it is applied via the CSS property "background".

To optimize and compress your CSS code, you can use our [online CSS compressor and optimizer](#) based on csstidy. If you want to create a linear or radial gradient as background or border, check our [CSS Gradient Generator](#).

Hey! You found this booklet interesting? Support Converting Colors with the new Membership Option!

The pro membership hides all ads, plus gives you double the colors in the color bucket, and more awesome pro features!

[Learn more, Memberships starting at \\$2.50/m!](#)

**Follow me
on Twitter!**

@ConvertingColor