

Converting Colors

Hex(4F281C)

Have a look what the booklet for
Hex(4F281C) contains.

Hex(4F281C)	3
<i>Conversions</i>	4
<i>Details</i>	6
<i>Harmonies</i>	11
<i>Previews</i>	23
<i>Color Blindness Simulation</i>	26
<i>CSS Examples</i>	29

Color

Hex(4F281C)

Conversions

Conversions Part 1

Format	Color
Hex	4F281C
RGB	79, 40, 28
RGB Percent	31%, 16%, 11%
CMY	0.6902, 0.8431, 0.8902
CMYK	0.00, 0.49, 0.65, 0.69
HSL	14°, 48%, 21%
HSV	14°, 65%, 31%
XYZ	4.1928, 3.2637, 1.5076
YIQ	50.2930, 27.0960, 4.5360

Conversions

Conversions Part 2

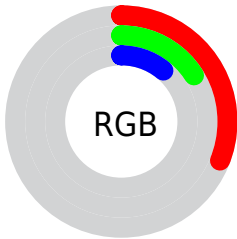
Format	Color
R_{YB}	79, 44, 28
Decimal	5187612
CIE _{Lab}	21.07, 16.88, 15.89
CIE _{LCh}	21, 23.184, 43.264
Yxy	3.2637, 0.4677, 0.3641
Android (android.graphics.Color)	4283377692 (0xFF4F281C)
YUV	50.2930, -10.9904, 25.1760
Hunter-Lab	18.0657, 9.8129, 7.6982

Details

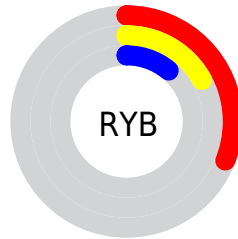
The Hex color **4F281C** is a dark color, and the websafe version is hex **663333**. A complement of this color would be **1C434F**, and the grayscale version is **323232**.

A 20% lighter version of the original color is **835648**, and **210000** is the 20% darker color. If you saturate the color by 10%, you get **4F2214**, and if you desaturate by 10%, it is **4F2E24**.

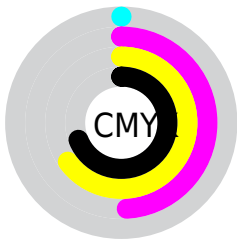
Distribution



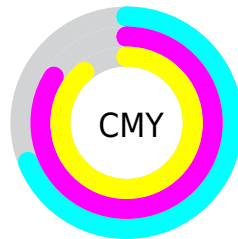
- Red (31%)
- Green (16%)
- Blue (11%)



- Red (31%)
- Yellow (17%)
- Blue (11%)



- Cyan (0%)
- Magenta (49%)
- Yellow (65%)
- Black (69%)



- Cyan (69%)
- Magenta (84%)
- Yellow (89%)

Brightness & Saturation Gradients

These gradients show how the Hex color 4F281C changes by changing the brightness by 10 percent. The first figure shows a shift by +10% for each color and the second figure -10%.

Similar to the brightness gradients but the following saturation gradients show a change of the Hex color 4F281C by changing the saturation by 10% instead.

 4F281C

 4F281C

FFFFFF

 371303

 835648

 210000

 9E6E5F

 000000

 BA8878

 D6A292

 F3BDAD

 FFD9C8

 FFF6E4

 4F281C

 4F281C

■ 4F2214

■ 4F2E24

■ 4F1C0C

■ 4F342C

■ 4F1604

■ 4F3A34

■ 4F1300

■ 4F403C

■ 4F4644

■ 4F4C4B

■ 4F5253

■ 4F585B

■ 4F5E63

Harmonies

Analogous

The Analogous color harmony consists of three colors that are next to each other on the color wheel.



53242C



4F281C



442E11

Triad

The Triadic color harmony groups three colors that are evenly spaced from another and form a triangle on the color wheel.



4F281C



043B28



233254

Complementary

The Complementary color scheme is a pair of colors which are on the opposite of each other on the color wheel.



4F281C



1C434F

Split Complementary

Split-complementary colors differ from the complementary color scheme. The scheme consists of three colors, the original color and two neighbors of the complement color.



003753



4F281C



003B3A

Square

The Square scheme is like the rectangle color scheme, but the four colors are evenly spaced on the color wheel.



4F281C



223819



003A4A



3E2B4C

Rectangle

The Rectangle color scheme consists of four colors that form a rectangle on the color wheel.



4F281C



3B320F



003A4A



163455

Sweetspot

The Sweet Spot groups the original color and five complimentary colors.



4F281C



665753



4F1C43



332A27



B3B3B3



333333

Same Dimension

The Same Dimension uses a secret algorithm to generate beautiful new colors.



4F281C



662A17



4F411C



262322



661800



E63600

Inverse Universe

The Inverse Universe completely reimagines the original color for something new.



1C434F



175466



1C2A4F



222526



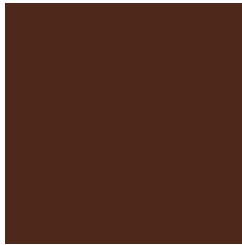
004E66



00B0E6

Previews

White Background



This preview shows how the Hex color 4F281C looks on a white background.

Color Contrast Check

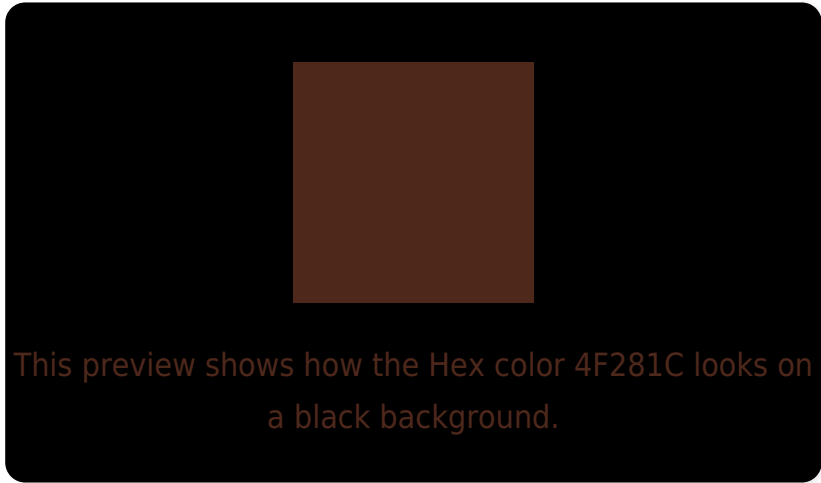
Large Text (above 18pt) WCAG AA ✓ Pass

Any Text WCAG AA ✓ Pass

Large Text (above 18pt) WCAG AAA ✓ Pass

Any Text WCAG AAA ✓ Pass

Black Background



Color Contrast Check

Large Text (above 18pt) WCAG AA × Fail

Any Text WCAG AA × Fail

Large Text (above 18pt) WCAG AAA × Fail

Any Text WCAG AAA × Fail

If you want to check with other color combinations, try the [Color Contrast Checker](#).

Hex 4F281C Background



This preview shows how black text looks on a background with the Hex color 4F281C.

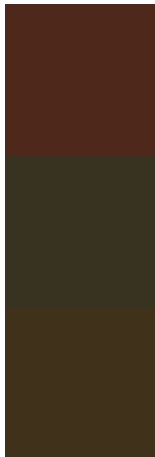


This preview shows how white text looks on a background with the Hex color 4F281C.

Color Blindness Simulation

Color vision deficiency is a very complex topic, and I could not describe the different causes any better than Wikipedia does, so if you want to learn more, you should check out their [article about color blindness](#).

Dichromacy



Original Color
4F281C

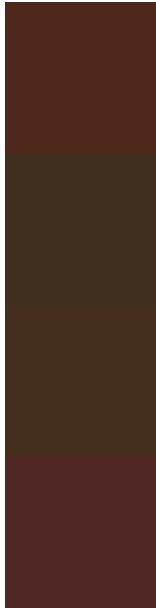
Protanopia
383320

Deuteranopia
3F311A



Tritanopia
502629

Trichromacy



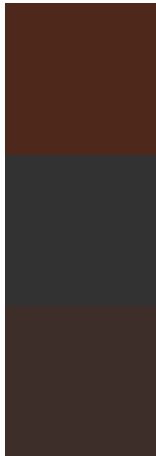
Original Color
4F281C

Protanomaly
402F1F

Deuteranomaly
452E1B

Tritanomaly
502724

Monochromacy



Original Color
4F281C

Achromatopsia
323232

Achromatomaly
3D2E2A

CSS Examples

Text

The CSS property to change the color of the text to Hex 4F281C is called "color". The color property can be set on classes, ids or directly on the HTML element.

This example shows how text in the color #4F281C looks like.

```
.text, #text, p{  
    color:#4F281C  
}
```

If you want to add a text shadow in that color use the text-shadow property, you can generate a text shadow directly with our [CSS Text Shadow Generator](#).

Here you see how black text with a 4 pixel #4F281C colored shadow looks like.

```
.shadow{ text-shadow: 4px 4px 2px #4F281C
}
```

Border

The CSS property to change the border of an element to Hex 4F281C is called "border". The border property can be set on classes, ids or directly on the HTML element.

This example shows the color as border, it can be applied via the CSS property "border" or "border-color".

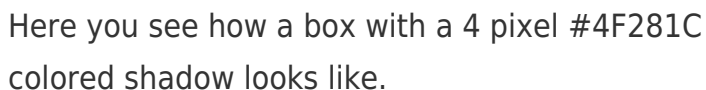
```
.border, #border, table{ border:4px solid
#4F281C }
```

If only the border color should be changed use the property `border-color`.

```
.border{ border-color:#4F281C }
```

If you want to add a box shadow in that color use:

Here you see how a box with a 4 pixel #4F281C colored shadow looks like.



```
.boxshadow{ -moz-box-shadow:4px 4px 4px  
4px #4F281C; -webkit-box-shadow:4px 4px  
4px 4px #4F281C; box-shadow:4px 4px 4px  
4px #4F281C }
```

Background

The CSS property to change the background color of an element to Hex 4F281C is called "background". The background property can be set on classes, ids or directly on the HTML element.

```
.background, #background, body{  
background:#4F281C }
```

If only the background color should be changed can be used:

```
.background{ background-color:#4F281C }
```

This example shows the color as background, it is applied via the CSS property "background".

To optimize and compress your CSS code, you can use our [online CSS compressor and optimizer](#) based on csstidy. If you want to create a linear or radial gradient as background or border, check our [CSS Gradient Generator](#).

Hey! You found this booklet interesting? Support Converting Colors with the new Membership Option!

The pro membership hides all ads, plus gives you double the colors in the color bucket, and more awesome pro features!

[Learn more, Memberships starting at \\$2.50/m!](#)

**Follow me
on Twitter!**

@ConvertingColor