

# Converting Colors

Hex(4F2A29)

Have a look what the booklet for  
Hex(4F2A29) contains.

<b>Hex(4F2A29)</b> .....	3
<b><i>Conversions</i></b> .....	4
<b><i>Details</i></b> .....	6
<b><i>Harmonies</i></b> .....	11
<b><i>Previews</i></b> .....	23
<b><i>Color Blindness Simulation</i></b> .....	26
<b><i>CSS Examples</i></b> .....	29

**Color**

**Hex(4F2A29)**

# Conversions

## Conversions Part 1

Format	Color
Hex	4F2A29
RGB	79, 42, 41
RGB Percent	31%, 16%, 16%
CMY	0.6902, 0.8353, 0.8392
CMYK	0.00, 0.47, 0.48, 0.69
HSL	2°, 32%, 24%
HSV	2°, 48%, 31%
XYZ	4.4527, 3.4783, 2.5345
YIQ	52.9490, 22.3730, 7.5330

# Conversions

## Conversions Part 2

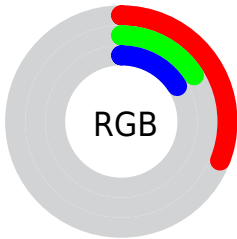
<b>Format</b>	<b>Color</b>
<b>R<sub>YB</sub></b>	79, 42, 41
Decimal	5188137
CIE Lab	21.87, 17.03, 8.18
CIE LCh	22, 18.894, 25.657
Yxy	3.4783, 0.4255, 0.3324
Android (android.graphics.Color)	4283378217 (0xFF4F2A29)
YUV	52.9490, -5.8909, 22.8467
Hunter-Lab	18.6502, 9.9783, 4.9977

# Details

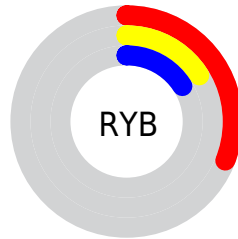
The Hex color **4F2A29** is a dark color, and the websafe version is hex **663333**. A complement of this color would be **294E4F**, and the grayscale version is **353535**.

A 20% lighter version of the original color is **825856**, and **230000** is the 20% darker color. If you saturate the color by 10%, you get **4F2221**, and if you desaturate by 10%, it is **4F3231**.

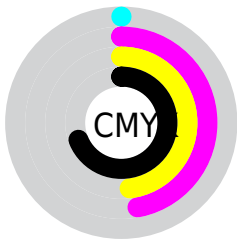
# Distribution



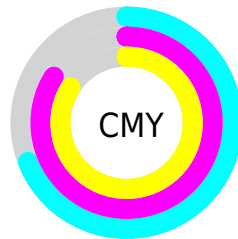
- Red (31%)
- Green (16%)
- Blue (16%)



- Red (31%)
- Yellow (16%)
- Blue (16%)



- Cyan (0%)
- Magenta (47%)
- Yellow (48%)
- Black (69%)



- Cyan (69%)
- Magenta (84%)
- Yellow (84%)

# Brightness & Saturation Gradients

These gradients show how the Hex color 4F2A29 changes by changing the brightness by 10 percent. The first figure shows a shift by +10% for each color and the second figure -10%.

Similar to the brightness gradients but the following saturation gradients show a change of the Hex color 4F2A29 by changing the saturation by 10% instead.





4F2A29



4F2A29

FFFFFF



371515



825856



230000



9D716E



000000



B88A88



D4A5A2



F1C0BD



FFDCD9



FFF9F5



4F2A29



4F2A29

■ 4F2221

■ 4F3231

■ 4F1B19

■ 4F3939

■ 4F1311

■ 4F4141

■ 4F0B09

■ 4F4949

■ 4F0402

■ 4F5051

■ 4F0200

■ 4F5858

■ 4F6060

■ 4F6868

■ 4F6F70

# Harmonies

## Analogous

The Analogous color harmony consists of three colors that are next to each other on the color wheel.



4D2937



4F2A29



4A2E1E

# Triad

The Triadic color harmony groups three colors that are evenly spaced from another and form a triangle on the color wheel.



4F2A29



203A24



1A3650

# Complementary

The Complementary color scheme is a pair of colors which are on the opposite of each other on the color wheel.



4F2A29



294E4F

# Split Complementary

Split-complementary colors differ from the complementary color scheme. The scheme consists of three colors, the original color and two neighbors of the complement color.



003A4B



4F2A29



0A3C32

# Square

The Square scheme is like the rectangle color scheme, but the four colors are evenly spaced on the color wheel.



4F2A29



31371B



003C40



33324E

# Rectangle

The Rectangle color scheme consists of four colors that form a rectangle on the color wheel.



4F2A29



433119



003C40



10384F



# Sweetspot

The Sweet Spot groups the original color and five complimentary colors.



4F2A29



665858



4F294E



332B2A



B3B3B3



333333



# Same Dimension

The Same Dimension uses a secret algorithm to generate beautiful new colors.



4F2A29



662C2B



4F3D29



262322



660300



E60600



# Inverse Universe

The Inverse Universe completely reimagines the original color for something new.



294E4F



2B6466



293B4F



222626



006366

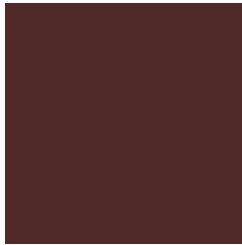


00DFE6



# Previews

## White Background



This preview shows how the Hex color 4F2A29 looks on a white background.

## Color Contrast Check

Large Text (above 18pt) WCAG AA ✓ Pass

Any Text WCAG AA ✓ Pass

Large Text (above 18pt) WCAG AAA ✓ Pass

Any Text WCAG AAA ✓ Pass

# Black Background



## Color Contrast Check

Large Text (above 18pt) WCAG AA × Fail

Any Text WCAG AA × Fail

Large Text (above 18pt) WCAG AAA × Fail

Any Text WCAG AAA × Fail

If you want to check with other color combinations, try the [Color Contrast Checker](#).



## Hex 4F2A29 Background



This preview shows how black text looks on a background with the Hex color 4F2A29.

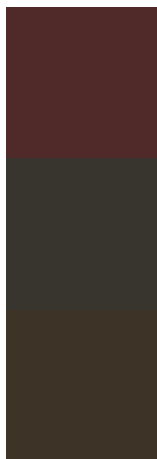


This preview shows how white text looks on a background with the Hex color 4F2A29.

# Color Blindness Simulation

Color vision deficiency is a very complex topic, and I could not describe the different causes any better than Wikipedia does, so if you want to learn more, you should check out their [article about color blindness](#).

## Dichromacy



**Original Color**  
4F2A29

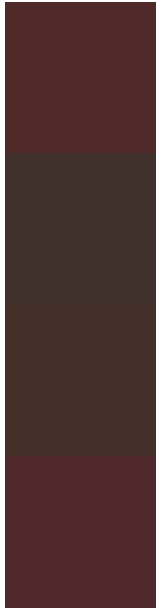
**Protanopia**  
37352E

**Deuteranopia**  
3E3327



**Tritanopia**  
4F292C

# Trichromacy



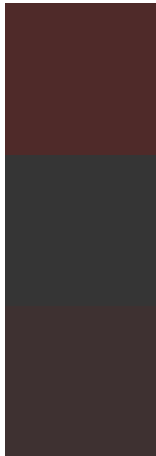
**Original Color**  
4F2A29

**Protanomaly**  
40312C

**Deuteranomaly**  
443028

**Tritanomaly**  
4F292B

# Monochromacy



**Original Color**  
4F2A29

**Achromatopsia**  
353535

**Achromatomaly**  
3E3131

# CSS Examples

## Text

The CSS property to change the color of the text to Hex 4F2A29 is called "color". The color property can be set on classes, ids or directly on the HTML element.

This example shows how text in the color #4F2A29 looks like.

```
.text, #text, p{  
    color:#4F2A29  
}
```

If you want to add a text shadow in that color use the text-shadow property, you can generate a text shadow directly with our [CSS Text Shadow Generator](#).

Here you see how black text with a 4 pixel #4F2A29 colored shadow looks like.

```
.shadow{ text-shadow: 4px 4px 2px #4F2A29
}
```

## Border

The CSS property to change the border of an element to Hex 4F2A29 is called "border". The border property can be set on classes, ids or directly on the HTML element.

This example shows the color as border, it can be applied via the CSS property "border" or "border-color".

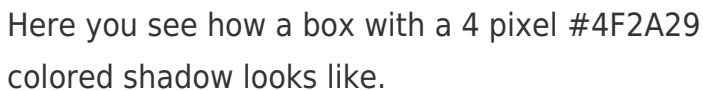
```
.border, #border, table{ border:4px solid
#4F2A29 }
```

If only the border color should be changed use the property `border-color`.

```
.border{ border-color:#4F2A29 }
```

If you want to add a box shadow in that color use:

Here you see how a box with a 4 pixel #4F2A29 colored shadow looks like.

A rectangular box with a dark red border and a dark red shadow. The box is white with a thin dark red border on the top and left sides, and a thicker dark red shadow on the bottom and right sides.

```
.boxshadow{ -moz-box-shadow:4px 4px 4px  
4px #4F2A29; -webkit-box-shadow:4px 4px  
4px 4px #4F2A29; box-shadow:4px 4px 4px  
4px #4F2A29 }
```

# Background

The CSS property to change the background color of an element to Hex 4F2A29 is called "background". The background property can be set on classes, ids or directly on the HTML element.

```
.background, #background, body{  
background:#4F2A29 }
```

If only the background color should be changed can be used:

```
.background{ background-color:#4F2A29 }
```

This example shows the color as background, it is applied via the CSS property "background".

To optimize and compress your CSS code, you can use our [online CSS compressor and optimizer](#) based on csstidy. If you want to create a linear or radial gradient as background or border, check our [CSS Gradient Generator](#).



Hey! You found this booklet interesting? Support Converting Colors with the new Membership Option!

The pro membership hides all ads, plus gives you double the colors in the color bucket, and more awesome pro features!

**[Learn more, Memberships starting at \\$2.50/m!](#)**

**Follow me  
on Twitter!**

@ConvertingColor