

Converting Colors

Hex(4F2D33)

Have a look what the booklet for
Hex(4F2D33) contains.

Hex(4F2D33)	3
<i>Conversions</i>	4
<i>Details</i>	6
<i>Harmonies</i>	11
<i>Previews</i>	23
<i>Color Blindness Simulation</i>	26
<i>CSS Examples</i>	29

Color

Hex(4F2D33)

Conversions

Conversions Part 1

Format	Color
Hex	4F2D33
RGB	79, 45, 51
RGB Percent	31%, 18%, 20%
CMY	0.6902, 0.8235, 0.8000
CMYK	0.00, 0.43, 0.35, 0.69
HSL	349°, 27%, 24%
HSV	349°, 43%, 31%
XYZ	4.7604, 3.7781, 3.6103
YIQ	55.8500, 18.3380, 9.0740

Conversions

Conversions Part 2

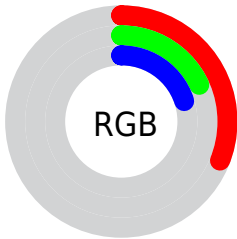
Format	Color
R_{YB}	79, 45, 51
Decimal	5188915
CIE Lab	22.92, 16.53, 2.86
CIE LCh	23, 16.776, 9.806
Yxy	3.7781, 0.3918, 0.3110
Android (android.graphics.Color)	4283378995 (0xFF4F2D33)
YUV	55.8500, -2.3911, 20.3026
Hunter-Lab	19.4372, 9.7014, 2.5934

Details

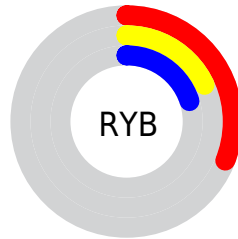
The Hex color **4F2D33** is a dark color, and the websafe version is hex **663333**. A complement of this color would be **2D4F49**, and the grayscale version is **383838**.

A 20% lighter version of the original color is **815B61**, and **240004** is the 20% darker color. If you saturate the color by 10%, you get **4F252C**, and if you desaturate by 10%, it is **4F353A**.

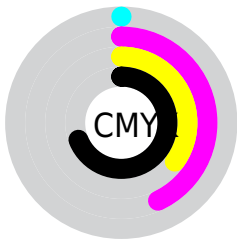
Distribution



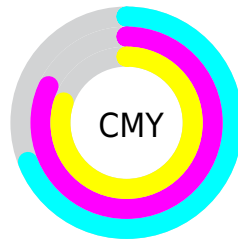
- Red (31%)
- Green (18%)
- Blue (20%)



- Red (31%)
- Yellow (18%)
- Blue (20%)



- Cyan (0%)
- Magenta (43%)
- Yellow (35%)
- Black (69%)



- Cyan (69%)
- Magenta (82%)
- Yellow (80%)

Brightness & Saturation Gradients

These gradients show how the Hex color 4F2D33 changes by changing the brightness by 10 percent. The first figure shows a shift by +10% for each color and the second figure -10%.

Similar to the brightness gradients but the following saturation gradients show a change of the Hex color 4F2D33 by changing the saturation by 10% instead.



4F2D33



4F2D33

FFFFFF



37181E



815B61



240004



9C747A



000000



B78E94



D3A8AE



F0C4CA



FFE0E6



FFFCFF



4F2D33



4F2D33

■ 4F252C

■ 4F353A

■ 4F1D26

■ 4F3D40

■ 4F151F

■ 4F4547

■ 4F0D19

■ 4F4D4D

■ 4F0612

■ 4F5554

■ 4F000E

■ 4F5C5A

■ 4F6461

■ 4F6C67

■ 4F746E

Harmonies

Analogous

The Analogous color harmony consists of three colors that are next to each other on the color wheel.



4A2E40



4F2D33



4D2F27

Triad

The Triadic color harmony groups three colors that are evenly spaced from another and form a triangle on the color wheel.



4F2D33



2D3B23



163A4E

Complementary

The Complementary color scheme is a pair of colors which are on the opposite of each other on the color wheel.



4F2D33



2D4F49

Split Complementary

Split-complementary colors differ from the complementary color scheme. The scheme consists of three colors, the original color and two neighbors of the complement color.



053D46



4F2D33



1E3D2E

Square

The Square scheme is like the rectangle color scheme, but the four colors are evenly spaced on the color wheel.



4F2D33



3B371E



0D3D3B



2B374F

Rectangle

The Rectangle color scheme consists of four colors that form a rectangle on the color wheel.



4F2D33



493221



0D3D3B



0F3B4C

Sweetspot

The Sweet Spot groups the original color and five complimentary colors.



4F2D33



66595B



492D4F



332B2C



B3B3B3



333333

Same Dimension

The Same Dimension uses a secret algorithm to generate beautiful new colors.



4F2D33



66313A



4F382D



262223



660012



E60028

Inverse Universe

The Inverse Universe completely reimagines the original color for something new.



4F2D33



66313A



2D444F



262223



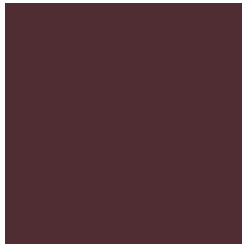
660012



E60028

Previews

White Background



This preview shows how the Hex color 4F2D33 looks on a white background.

Color Contrast Check

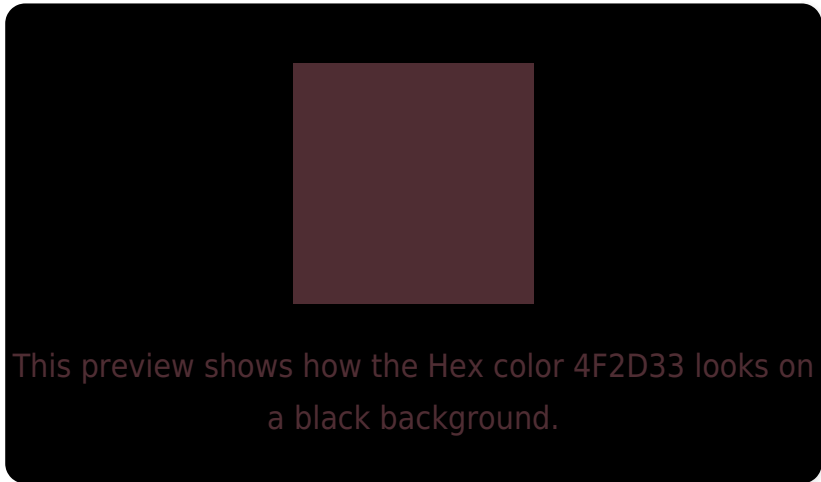
Large Text (above 18pt) WCAG AA ✓ Pass

Any Text WCAG AA ✓ Pass

Large Text (above 18pt) WCAG AAA ✓ Pass

Any Text WCAG AAA ✓ Pass

Black Background



Color Contrast Check

Large Text (above 18pt) WCAG AA × Fail

Any Text WCAG AA × Fail

Large Text (above 18pt) WCAG AAA × Fail

Any Text WCAG AAA × Fail

If you want to check with other color combinations, try the [Color Contrast Checker](#).

Hex 4F2D33 Background



This preview shows how black text looks on a background with the Hex color 4F2D33.



This preview shows how white text looks on a background with the Hex color 4F2D33.

Color Blindness Simulation

Color vision deficiency is a very complex topic, and I could not describe the different causes any better than Wikipedia does, so if you want to learn more, you should check out their [article about color blindness](#).

Dichromacy



Original Color
4F2D33

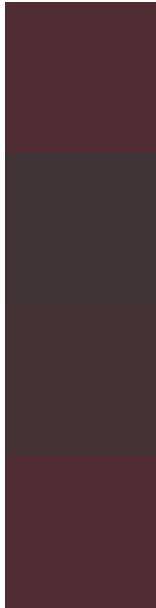
Protanopia
383738

Deuteranopia
3F3532



Tritanopia
4F2D31

Trichromacy



Original Color

4F2D33

Protanomaly

403336

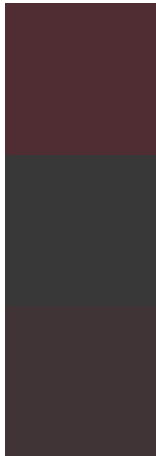
Deuteranomaly

453232

Tritanomaly

4F2D32

Monochromacy



Original Color

4F2D33

Achromatopsia

383838

Achromatomaly

403436

CSS Examples

Text

The CSS property to change the color of the text to Hex 4F2D33 is called "color". The color property can be set on classes, ids or directly on the HTML element.

This example shows how text in the color #4F2D33 looks like.

```
.text, #text, p{  
    color:#4F2D33  
}
```

If you want to add a text shadow in that color use the text-shadow property, you can generate a text shadow directly with our [CSS Text Shadow Generator](#).

Here you see how black text with a 4 pixel #4F2D33 colored shadow looks like.

```
.shadow{ text-shadow: 4px 4px 2px #4F2D33
}
```

Border

The CSS property to change the border of an element to Hex 4F2D33 is called "border". The border property can be set on classes, ids or directly on the HTML element.

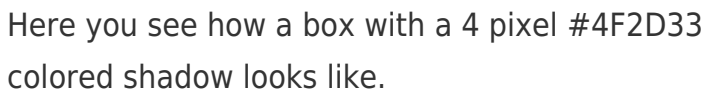
This example shows the color as border, it can be applied via the CSS property "border" or "border-color".

```
.border, #border, table{ border:4px solid
#4F2D33 }
```

If only the border color should be changed use the property `border-color`.

```
.border{ border-color:#4F2D33 }
```

If you want to add a box shadow in that color use:



Here you see how a box with a 4 pixel #4F2D33 colored shadow looks like.

```
.boxshadow{ -moz-box-shadow:4px 4px 4px  
4px #4F2D33; -webkit-box-shadow:4px 4px  
4px 4px #4F2D33; box-shadow:4px 4px 4px  
4px #4F2D33 }
```

Background

The CSS property to change the background color of an element to Hex 4F2D33 is called "background". The background property can be set on classes, ids or directly on the HTML element.

```
.background, #background, body{  
background:#4F2D33 }
```

If only the background color should be changed can be used:

```
.background{ background-color:#4F2D33 }
```

This example shows the color as background, it is applied via the CSS property "background".

To optimize and compress your CSS code, you can use our [online CSS compressor and optimizer](#) based on csstidy. If you want to create a linear or radial gradient as background or border, check our [CSS Gradient Generator](#).

Hey! You found this booklet interesting? Support Converting Colors with the new Membership Option!

The pro membership hides all ads, plus gives you double the colors in the color bucket, and more awesome pro features!

[Learn more, Memberships starting at \\$2.50/m!](#)

**Follow me
on Twitter!**

@ConvertingColor