

Converting Colors

Hex(4F353A)

Have a look what the booklet for
Hex(4F353A) contains.

Hex(4F353A)	3
<i>Conversions</i>	4
<i>Details</i>	6
<i>Harmonies</i>	11
<i>Previews</i>	23
<i>Color Blindness Simulation</i>	26
<i>CSS Examples</i>	29

Color

Hex(4F353A)

Conversions

Conversions Part 1

Format	Color
Hex	4F353A
RGB	79, 53, 58
RGB Percent	31%, 21%, 23%
CMY	0.6902, 0.7922, 0.7725
CMYK	0.00, 0.33, 0.27, 0.69
HSL	348°, 20%, 26%
HSV	348°, 33%, 31%
XYZ	5.2613, 4.5140, 4.5970
YIQ	61.3440, 13.8910, 7.0670

Conversions

Conversions Part 2

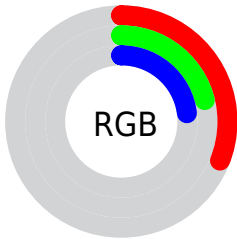
Format	Color
R_{YB}	79, 53, 58
Decimal	5190970
CIE _{Lab}	25.30, 12.53, 1.57
CIE _{LCh}	25, 12.625, 7.144
Yxy	4.5140, 0.3661, 0.3141
Android (android.graphics.Color)	4283381050 (0xFF4F353A)
YUV	61.3440, -1.6486, 15.4843
Hunter-Lab	21.2461, 7.0222, 2.0438

Details

The Hex color **4F353A** is a dark color, and the websafe version is hex **333333**. A complement of this color would be **354F4A**, and the grayscale version is **3D3D3D**.

A 20% lighter version of the original color is **816469**, and **22090F** is the 20% darker color. If you saturate the color by 10%, you get **4F2D34**, and if you desaturate by 10%, it is **4F3D40**.

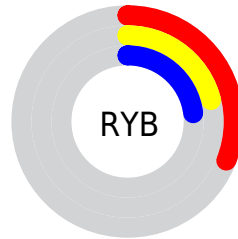
Distribution



Red (31%)

Green (21%)

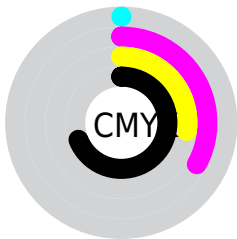
Blue (23%)



Red (31%)

Yellow (21%)

Blue (23%)

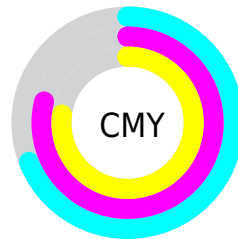


Cyan (0%)

Magenta (33%)

Yellow (27%)

Black (69%)



Cyan (69%)

Magenta (79%)

Yellow (77%)

Brightness & Saturation Gradients

These gradients show how the Hex color 4F353A changes by changing the brightness by 10 percent. The first figure shows a shift by +10% for each color and the second figure -10%.

Similar to the brightness gradients but the following saturation gradients show a change of the Hex color 4F353A by changing the saturation by 10% instead.



4F353A



4F353A

FFFFFF



381F24



816469



22090F



9B7D82



000000



B6979C



D2B2B7



EECDD3



FFE9EF



4F353A



4F353A



4F2D34



4F3D40

■ 4F252D

■ 4F4547

■ 4F1D27

■ 4F4D4D

■ 4F1520

■ 4F5554

■ 4F0E1A

■ 4F5D5A

■ 4F0614

■ 4F6460

■ 4F000F

■ 4F6C67

■ 4F746D

■ 4F7C73

Harmonies

Analogous

The Analogous color harmony consists of three colors that are next to each other on the color wheel.



4A3644



4F353A



4E3631

Triad

The Triadic color harmony groups three colors that are evenly spaced from another and form a triangle on the color wheel.



4F353A



363F2D



273F4D

Complementary

The Complementary color scheme is a pair of colors which are on the opposite of each other on the color wheel.



4F353A



354F4A

Split Complementary

Split-complementary colors differ from the complementary color scheme. The scheme consists of three colors, the original color and two neighbors of the complement color.



204147



4F353A



2B4134

Square

The Square scheme is like the rectangle color scheme, but the four colors are evenly spaced on the color wheel.



4F353A



413C29



22413E



333C4F

Rectangle

The Rectangle color scheme consists of four colors that form a rectangle on the color wheel.



4F353A



4B382C



22413E



23404C

Sweetspot

The Sweet Spot groups the original color and five complimentary colors.



4F353A



665C5E



4A354F



332D2E



B3B3B3



333333

Same Dimension

The Same Dimension uses a secret algorithm to generate beautiful new colors.



4F353A



663E46



4F3D35



262223



660014



E6002C

Inverse Universe

The Inverse Universe completely reimagines the original color for something new.



4F353A



663E46



35474F



262223



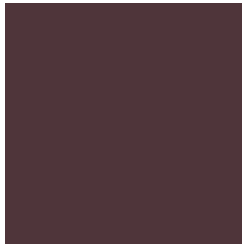
660014



E6002C

Previews

White Background



This preview shows how the Hex color 4F353A looks on a white background.

Color Contrast Check

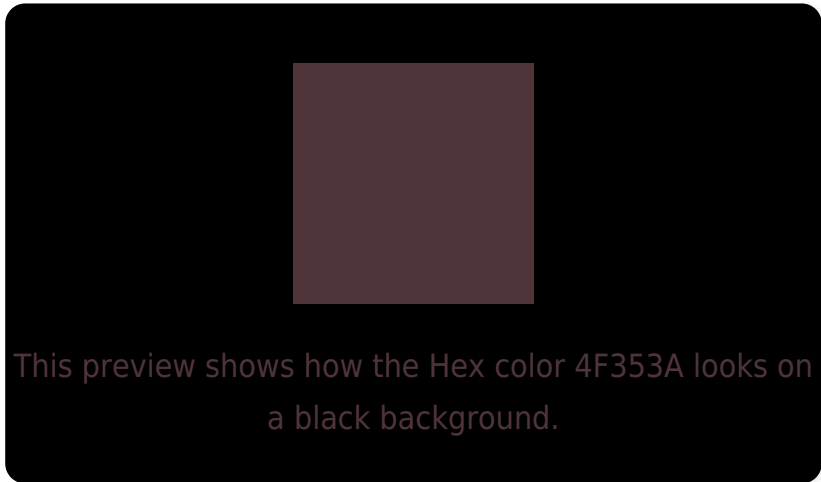
Large Text (above 18pt) WCAG AA ✓ Pass

Any Text WCAG AA ✓ Pass

Large Text (above 18pt) WCAG AAA ✓ Pass

Any Text WCAG AAA ✓ Pass

Black Background



Color Contrast Check

Large Text (above 18pt) WCAG AA × Fail

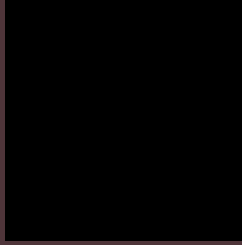
Any Text WCAG AA × Fail

Large Text (above 18pt) WCAG AAA × Fail

Any Text WCAG AAA × Fail

If you want to check with other color combinations, try the [Color Contrast Checker](#).

Hex 4F353A Background



This preview shows how black text looks on a background with the Hex color 4F353A.

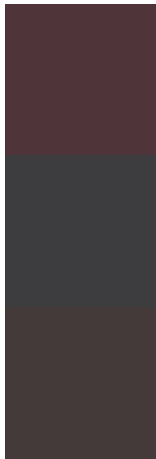


This preview shows how white text looks on a background with the Hex color 4F353A.

Color Blindness Simulation

Color vision deficiency is a very complex topic, and I could not describe the different causes any better than Wikipedia does, so if you want to learn more, you should check out their [article about color blindness](#).

Dichromacy



Original Color
4F353A

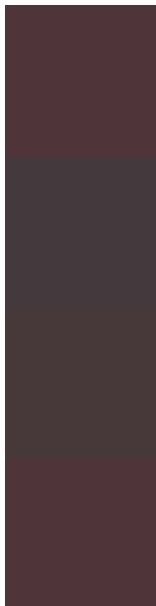
Protanopia
3D3C3E

Deuteranopia
433A39



Tritanopia
4F3539

Trichromacy



Original Color

4F353A

Protanomaly

44393D

Deuteranomaly

473839

Tritanomaly

4F3539

Monochromacy



Original Color

4F353A

Achromatopsia

3D3D3D

Achromatomaly

443A3C

CSS Examples

Text

The CSS property to change the color of the text to Hex 4F353A is called "color". The color property can be set on classes, ids or directly on the HTML element.

This example shows how text in the color #4F353A looks like.

```
.text, #text, p{  
    color:#4F353A  
}
```

If you want to add a text shadow in that color use the text-shadow property, you can generate a text shadow directly with our [CSS Text Shadow Generator](#).

Here you see how black text with a 4 pixel #4F353A colored shadow looks like.

```
.shadow{ text-shadow: 4px 4px 2px #4F353A
}
```

Border

The CSS property to change the border of an element to Hex 4F353A is called "border". The border property can be set on classes, ids or directly on the HTML element.

This example shows the color as border, it can be applied via the CSS property "border" or "border-color".

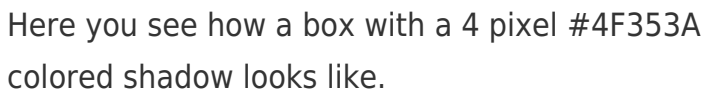
```
.border, #border, table{ border:4px solid
#4F353A }
```

If only the border color should be changed use the property `border-color`.

```
.border{ border-color:#4F353A }
```

If you want to add a box shadow in that color use:

Here you see how a box with a 4 pixel #4F353A colored shadow looks like.

A rectangular box with a dark red border and a dark red shadow. The shadow is visible on the right and bottom edges of the box.

```
.boxshadow{ -moz-box-shadow:4px 4px 4px  
4px #4F353A; -webkit-box-shadow:4px 4px  
4px 4px #4F353A; box-shadow:4px 4px 4px  
4px #4F353A }
```

Background

The CSS property to change the background color of an element to Hex 4F353A is called "background". The background property can be set on classes, ids or directly on the HTML element.

```
.background, #background, body{  
background:#4F353A }
```

If only the background color should be changed can be used:

```
.background{ background-color:#4F353A }
```

This example shows the color as background, it is applied via the CSS property "background".

To optimize and compress your CSS code, you can use our [online CSS compressor and optimizer](#) based on csstidy. If you want to create a linear or radial gradient as background or border, check our [CSS Gradient Generator](#).

Hey! You found this booklet interesting? Support Converting Colors with the new Membership Option!

The pro membership hides all ads, plus gives you double the colors in the color bucket, and more awesome pro features!

[Learn more, Memberships starting at \\$2.50/m!](#)

**Follow me
on Twitter!**

@ConvertingColor