

# Converting Colors

Hex(4F3E34)

Have a look what the booklet for  
Hex(4F3E34) contains.

<b>Hex(4F3E34)</b> .....	3
<b><i>Conversions</i></b> .....	4
<b><i>Details</i></b> .....	6
<b><i>Harmonies</i></b> .....	11
<b><i>Previews</i></b> .....	23
<b><i>Color Blindness Simulation</i></b> .....	26
<b><i>CSS Examples</i></b> .....	29

# Color

Hex(4F3E34)

# Conversions

## Conversions Part 1

Format	Color
Hex	4F3E34
RGB	79, 62, 52
RGB Percent	31%, 24%, 20%
CMY	0.6902, 0.7569, 0.7961
CMYK	0.00, 0.22, 0.34, 0.69
HSL	22°, 21%, 26%
HSV	22°, 34%, 31%
XYZ	5.5669, 5.3554, 3.9891
YIQ	65.9430, 13.3420, 0.4940

# Conversions

## Conversions Part 2

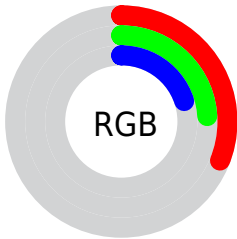
<b>Format</b>	<b>Color</b>
<b>R<sub>YB</sub></b>	79, 68, 52
Decimal	5193268
CIE Lab	27.72, 5.71, 8.96
CIE LCh	28, 10.625, 57.500
Yxy	5.3554, 0.3733, 0.3591
Android (android.graphics.Color)	4283383348 (0xFF4F3E34)
YUV	65.9430, -6.8739, 11.4510
Hunter-Lab	23.1418, 2.4410, 5.9791

# Details

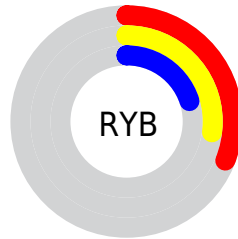
The Hex color **4F3E34** is a dark color, and the websafe version is hex **333333**. A complement of this color would be **34454F**, and the grayscale version is **424242**.

A 20% lighter version of the original color is **816D62**, and **221407** is the 20% darker color. If you saturate the color by 10%, you get **4F392C**, and if you desaturate by 10%, it is **4F433C**.

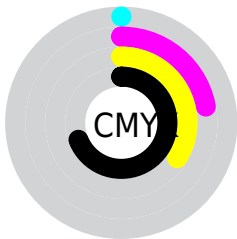
# Distribution



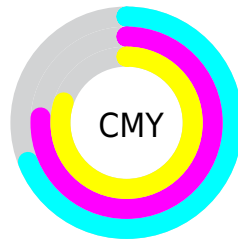
- Red (31%)
- Green (24%)
- Blue (20%)



- Red (31%)
- Yellow (27%)
- Blue (20%)



- Cyan (0%)
- Magenta (22%)
- Yellow (34%)
- Black (69%)



- Cyan (69%)
- Magenta (76%)
- Yellow (80%)

# Brightness & Saturation Gradients

These gradients show how the Hex color 4F3E34 changes by changing the brightness by 10 percent. The first figure shows a shift by +10% for each color and the second figure -10%.

Similar to the brightness gradients but the following saturation gradients show a change of the Hex color 4F3E34 by changing the saturation by 10% instead.





4F3E34



4F3E34

FFFFFF



38281F



816D62



221407



9B877B



000000



B6A195



D2BCB0



EED8CB



FFF4E7



4F3E34



4F3E34



4F392C



4F433C

■ 4F3424

■ 4F4844

■ 4F2F1C

■ 4F4D4C

■ 4F2A14

■ 4F5254

■ 4F250C

■ 4F575C

■ 4F2005

■ 4F5C63

■ 4F1D00

■ 4F616B

■ 4F6673

■ 4F6B7B

# Harmonies

## Analogous

The Analogous color harmony consists of three colors that are next to each other on the color wheel.



523C3A



4F3E34



484131

# Triad

The Triadic color harmony groups three colors that are evenly spaced from another and form a triangle on the color wheel.



4F3E34



2E4640



424050

# Complementary

The Complementary color scheme is a pair of colors which are on the opposite of each other on the color wheel.



4F3E34



34454F

# Split Complementary

Split-complementary colors differ from the complementary color scheme. The scheme consists of three colors, the original color and two neighbors of the complement color.



374252



4F3E34



2B4649

# Square

The Square scheme is like the rectangle color scheme, but the four colors are evenly spaced on the color wheel.



4F3E34



364538



2E454F



4B3D4A

# Rectangle

The Rectangle color scheme consists of four colors that form a rectangle on the color wheel.



4F3E34



434232



2E454F



3E4151



# Sweetspot

The Sweet Spot groups the original color and five complimentary colors.



4F3E34



66605C



4F3445



332F2D



B3B3B3



333333



# Same Dimension

The Same Dimension uses a secret algorithm to generate beautiful new colors.



4F3E34



664C3C



4F4B34



262422



662600



E65500



# Inverse Universe

The Inverse Universe completely reimagines the original color for something new.



34454F



3C5766



34384F



222526



004066

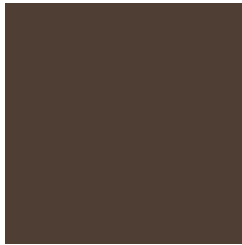


0090E6



# Previews

## White Background



This preview shows how the Hex color 4F3E34 looks on a white background.

## Color Contrast Check

Large Text (above 18pt) WCAG AA ✓ Pass

Any Text WCAG AA ✓ Pass

Large Text (above 18pt) WCAG AAA ✓ Pass

Any Text WCAG AAA ✓ Pass

# Black Background



## Color Contrast Check

Large Text (above 18pt) WCAG AA × Fail

Any Text WCAG AA × Fail

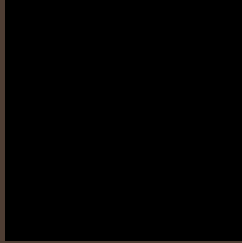
Large Text (above 18pt) WCAG AAA × Fail

Any Text WCAG AAA × Fail

If you want to check with other color combinations, try the [Color Contrast Checker](#).



## Hex 4F3E34 Background



This preview shows how black text looks on a background with the Hex color 4F3E34.

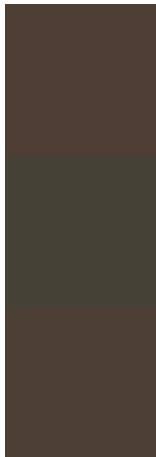


This preview shows how white text looks on a background with the Hex color 4F3E34.

# Color Blindness Simulation

Color vision deficiency is a very complex topic, and I could not describe the different causes any better than Wikipedia does, so if you want to learn more, you should check out their [article about color blindness](#).

## Dichromacy



**Original Color**  
4F3E34

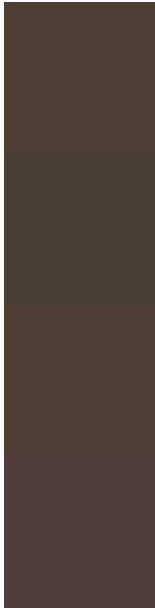
**Protanopia**  
454136

**Deuteranopia**  
4D3F34



**Tritanopia**  
503C41

# Trichromacy



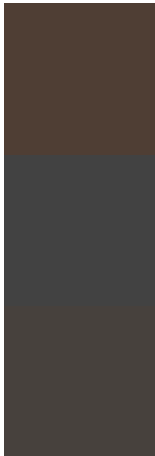
**Original Color**  
4F3E34

**Protanomaly**  
494035

**Deuteranomaly**  
4E3F34

**Tritanomaly**  
503D3C

# Monochromacy



**Original Color**  
4F3E34

**Achromatopsia**  
424242

**Achromatomaly**  
47413D

# CSS Examples

## Text

The CSS property to change the color of the text to Hex 4F3E34 is called "color". The color property can be set on classes, ids or directly on the HTML element.

This example shows how text in the color #4F3E34 looks like.

```
.text, #text, p{  
    color:#4F3E34  
}
```

If you want to add a text shadow in that color use the text-shadow property, you can generate a text shadow directly with our [CSS Text Shadow Generator](#).

Here you see how black text with a 4 pixel #4F3E34 colored shadow looks like.

```
.shadow{ text-shadow: 4px 4px 2px #4F3E34
}
```

## Border

The CSS property to change the border of an element to Hex 4F3E34 is called "border". The border property can be set on classes, ids or directly on the HTML element.

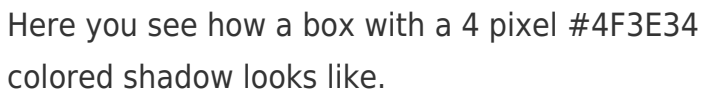
This example shows the color as border, it can be applied via the CSS property "border" or "border-color".

```
.border, #border, table{ border:4px solid
#4F3E34 }
```

If only the border color should be changed use the property `border-color`.

```
.border{ border-color:#4F3E34 }
```

If you want to add a box shadow in that color use:



Here you see how a box with a 4 pixel #4F3E34 colored shadow looks like.

```
.boxshadow{ -moz-box-shadow:4px 4px 4px  
4px #4F3E34; -webkit-box-shadow:4px 4px  
4px 4px #4F3E34; box-shadow:4px 4px 4px  
4px #4F3E34 }
```

# Background

The CSS property to change the background color of an element to Hex 4F3E34 is called "background". The background property can be set on classes, ids or directly on the HTML element.

```
.background, #background, body{  
background:#4F3E34 }
```

If only the background color should be changed can be used:

```
.background{ background-color:#4F3E34 }
```

This example shows the color as background, it is applied via the CSS property "background".

To optimize and compress your CSS code, you can use our [online CSS compressor and optimizer](#) based on csstidy. If you want to create a linear or radial gradient as background or border, check our [CSS Gradient Generator](#).



Hey! You found this booklet interesting? Support Converting Colors with the new Membership Option!

The pro membership hides all ads, plus gives you double the colors in the color bucket, and more awesome pro features!

**[Learn more, Memberships starting at \\$2.50/m!](#)**

**Follow me  
on Twitter!**

@ConvertingColor