

Converting Colors

Hex(4F421C)

Have a look what the booklet for
Hex(4F421C) contains.

Hex(4F421C)	3
<i>Conversions</i>	4
<i>Details</i>	6
<i>Harmonies</i>	11
<i>Previews</i>	23
<i>Color Blindness Simulation</i>	26
<i>CSS Examples</i>	29

Color

Hex(4F421C)

Conversions

Conversions Part 1

Format	Color
Hex	4F421C
RGB	79, 66, 28
RGB Percent	31%, 26%, 11%
CMY	0.6902, 0.7412, 0.8902
CMYK	0.00, 0.16, 0.65, 0.69
HSL	45°, 48%, 21%
HSV	45°, 65%, 31%
XYZ	5.3823, 5.6425, 1.9041
YIQ	65.5550, 19.9460, -9.0620

Conversions

Conversions Part 2

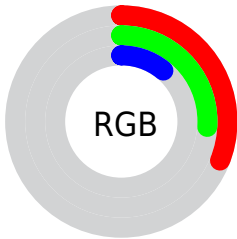
Format	Color
R_{YB}	45, 79, 28
Decimal	5194268
CIE _{Lab}	28.49, 0.23, 24.80
CIE _{LCh}	28, 24.799, 89.472
Yxy	5.6425, 0.4163, 0.4364
Android (android.graphics.Color)	4283384348 (0xFF4F421C)
YUV	65.5550, -18.5146, 11.7913
Hunter-Lab	23.7540, -1.1244, 11.8753

Details

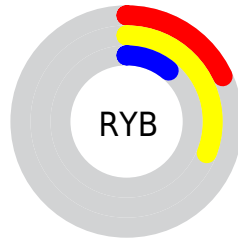
The Hex color **4F421C** is a dark color, and the websafe version is hex **333300**. A complement of this color would be **1C294F**, and the grayscale version is **424242**.

A 20% lighter version of the original color is **827249**, and **201800** is the 20% darker color. If you saturate the color by 10%, you get **4F4014**, and if you desaturate by 10%, it is **4F4424**.

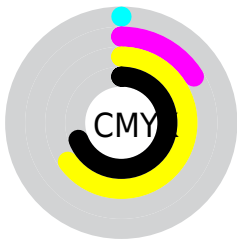
Distribution



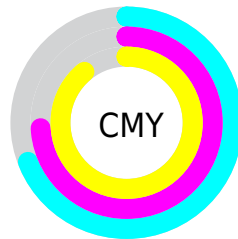
- Red (31%)
- Green (26%)
- Blue (11%)



- Red (18%)
- Yellow (31%)
- Blue (11%)



- Cyan (0%)
- Magenta (16%)
- Yellow (65%)
- Black (69%)



- Cyan (69%)
- Magenta (74%)
- Yellow (89%)

Brightness & Saturation Gradients

These gradients show how the Hex color 4F421C changes by changing the brightness by 10 percent. The first figure shows a shift by +10% for each color and the second figure -10%.

Similar to the brightness gradients but the following saturation gradients show a change of the Hex color 4F421C by changing the saturation by 10% instead.



4F421C



4F421C

FFFFFF



372C04



827249



201800



9C8B61



000000



B8A57A



D4C094



F1DCAF



FFF9CB



FFFFE7



4F421C



4F421C

■ 4F4014

■ 4F4424

■ 4F3E0C

■ 4F462C

■ 4F3C04

■ 4F4834

■ 4F3B00

■ 4F4A3C

■ 4F4C44

■ 4F4E4B

■ 4F5053

■ 4F525B

■ 4F5463

Harmonies

Analogous

The Analogous color harmony consists of three colors that are next to each other on the color wheel.



5E3B23



4F421C



3C4821

Triad

The Triadic color harmony groups three colors that are evenly spaced from another and form a triangle on the color wheel.



4F421C



004D55



5B3757

Complementary

The Complementary color scheme is a pair of colors which are on the opposite of each other on the color wheel.



4F421C



1C294F

Split Complementary

Split-complementary colors differ from the complementary color scheme. The scheme consists of three colors, the original color and two neighbors of the complement color.



443E64



4F421C



004A64

Square

The Square scheme is like the rectangle color scheme, but the four colors are evenly spaced on the color wheel.



4F421C



004D42



214569



663344

Rectangle

The Rectangle color scheme consists of four colors that form a rectangle on the color wheel.



4F421C



2C4A2A



214569



54395C

Sweetspot

The Sweet Spot groups the original color and five complimentary colors.



4F421C



666153



4F1C2A



333027



B3B3B3



333333

Same Dimension

The Same Dimension uses a secret algorithm to generate beautiful new colors.



4F421C



665217



434F1C



262522



664C00



E6AB00

Inverse Universe

The Inverse Universe completely reimagines the original color for something new.



1C294F



172B66



281C4F



222326



001A66



003BE6

Previews

White Background



This preview shows how the Hex color 4F421C looks on a white background.

Color Contrast Check

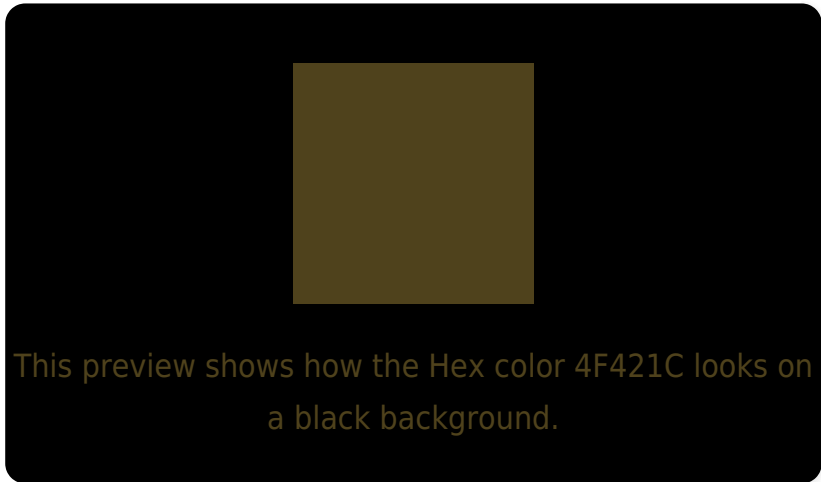
Large Text (above 18pt) WCAG AA ✓ Pass

Any Text WCAG AA ✓ Pass

Large Text (above 18pt) WCAG AAA ✓ Pass

Any Text WCAG AAA ✓ Pass

Black Background



Color Contrast Check

Large Text (above 18pt) WCAG AA × Fail

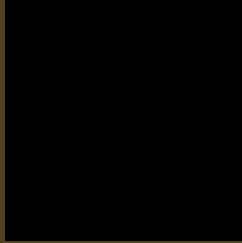
Any Text WCAG AA × Fail

Large Text (above 18pt) WCAG AAA × Fail

Any Text WCAG AAA × Fail

If you want to check with other color combinations, try the [Color Contrast Checker](#).

Hex 4F421C Background



This preview shows how black text looks on a background with the Hex color 4F421C.



This preview shows how white text looks on a background with the Hex color 4F421C.

Color Blindness Simulation

Color vision deficiency is a very complex topic, and I could not describe the different causes any better than Wikipedia does, so if you want to learn more, you should check out their [article about color blindness](#).

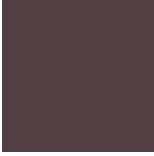
Dichromacy



Original Color
4F421C

Protanopia
4B431C

Deuteranopia
54401D



Tritanopia
523E43

Trichromacy



Original Color
4F421C

Protanomaly
4C431C

Deuteranomaly
52411D

Tritanomaly
513F35

Monochromacy



Original Color
4F421C

Achromatopsia
424242

Achromatomaly
474234

CSS Examples

Text

The CSS property to change the color of the text to Hex 4F421C is called "color". The color property can be set on classes, ids or directly on the HTML element.

This example shows how text in the color #4F421C looks like.

```
.text, #text, p{  
    color:#4F421C  
}
```

If you want to add a text shadow in that color use the text-shadow property, you can generate a text shadow directly with our [CSS Text Shadow Generator](#).

Here you see how black text with a 4 pixel #4F421C colored shadow looks like.

```
.shadow{ text-shadow: 4px 4px 2px #4F421C
}
```

Border

The CSS property to change the border of an element to Hex 4F421C is called "border". The border property can be set on classes, ids or directly on the HTML element.

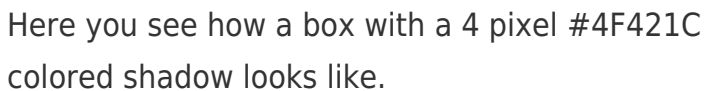
This example shows the color as border, it can be applied via the CSS property "border" or "border-color".

```
.border, #border, table{ border:4px solid
#4F421C }
```

If only the border color should be changed use the property `border-color`.

```
.border{ border-color:#4F421C }
```

If you want to add a box shadow in that color use:



Here you see how a box with a 4 pixel #4F421C colored shadow looks like.

```
.boxshadow{ -moz-box-shadow:4px 4px 4px  
4px #4F421C; -webkit-box-shadow:4px 4px  
4px 4px #4F421C; box-shadow:4px 4px 4px  
4px #4F421C }
```

Background

The CSS property to change the background color of an element to Hex 4F421C is called "background". The background property can be set on classes, ids or directly on the HTML element.

```
.background, #background, body{  
background:#4F421C }
```

If only the background color should be changed can be used:

```
.background{ background-color:#4F421C }
```

This example shows the color as background, it is applied via the CSS property "background".

To optimize and compress your CSS code, you can use our [online CSS compressor and optimizer](#) based on csstidy. If you want to create a linear or radial gradient as background or border, check our [CSS Gradient Generator](#).

Hey! You found this booklet interesting? Support Converting Colors with the new Membership Option!

The pro membership hides all ads, plus gives you double the colors in the color bucket, and more awesome pro features!

[Learn more, Memberships starting at \\$2.50/m!](#)

**Follow me
on Twitter!**

@ConvertingColor