

Converting Colors

Hex(4F4741)

Have a look what the booklet for
Hex(4F4741) contains.

Hex(4F4741)	3
<i>Conversions</i>	4
<i>Details</i>	6
<i>Harmonies</i>	11
<i>Previews</i>	23
<i>Color Blindness Simulation</i>	26
<i>CSS Examples</i>	29

Color

Hex(4F4741)

Conversions

Conversions Part 1

Format	Color
Hex	4F4741
RGB	79, 71, 65
RGB Percent	31%, 28%, 25%
CMY	0.6902, 0.7216, 0.7451
CMYK	0.00, 0.10, 0.18, 0.69
HSL	26°, 10%, 28%
HSV	26°, 18%, 31%
XYZ	6.4318, 6.5504, 5.9264
YIQ	72.7080, 6.6940, -0.1700

Conversions

Conversions Part 2

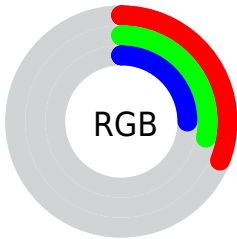
Format	Color
R_{YB}	79, 76, 65
Decimal	5195585
CIE Lab	30.76, 2.20, 4.83
CIE LCh	31, 5.304, 65.522
Yxy	6.5504, 0.3402, 0.3464
Android (android.graphics.Color)	4283385665 (0xFF4F4741)
YUV	72.7080, -3.8000, 5.5181
Hunter-Lab	25.5937, 0.0688, 4.1867

Details

The Hex color **4F4741** is a dark color, and the websafe version is hex **333333**. A complement of this color would be **41494F**, and the grayscale version is **494949**.

A 20% lighter version of the original color is **807771**, and **221C17** is the 20% darker color. If you saturate the color by 10%, you get **4F4239**, and if you desaturate by 10%, it is **4F4C49**.

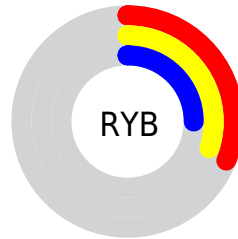
Distribution



Red (31%)

Green (28%)

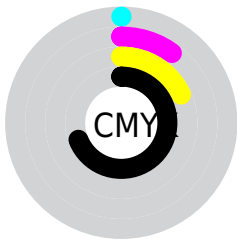
Blue (25%)



Red (31%)

Yellow (30%)

Blue (25%)

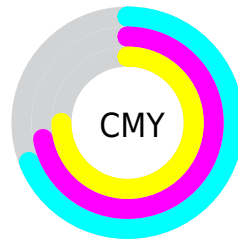


Cyan (0%)

Magenta (10%)

Yellow (18%)

Black (69%)



Cyan (69%)

Magenta (72%)

Yellow (75%)

Brightness & Saturation Gradients

These gradients show how the Hex color 4F4741 changes by changing the brightness by 10 percent. The first figure shows a shift by +10% for each color and the second figure -10%.

Similar to the brightness gradients but the following saturation gradients show a change of the Hex color 4F4741 by changing the saturation by 10% instead.

■ 4F4741

■ 4F4741

FFFFFF

■ 38312B

■ 807771

■ 221C17

■ 9A918A

■ 0A0100

■ B5ABA4

■ 000000

■ D1C7C0

■ EDE3DB

■ FFFFF8

■ 4F4741

■ 4F4741

■ 4F4239

■ 4F4C49

■ 4F3E31

■ 4F5051

■ 4F3929

■ 4F5559

■ 4F3521

■ 4F5961

■ 4F3019

■ 4F5E69

■ 4F2C12

■ 4F6270

■ 4F270A

■ 4F6778

■ 4F2302

■ 4F6B80

■ 4F2200

■ 4F7088

Harmonies

Analogous

The Analogous color harmony consists of three colors that are next to each other on the color wheel.



514644



4F4741



4B4840

Triad

The Triadic color harmony groups three colors that are evenly spaced from another and form a triangle on the color wheel.



4F4741



3F4B49



4A474F

Complementary

The Complementary color scheme is a pair of colors which are on the opposite of each other on the color wheel.



4F4741



41494F

Split Complementary

Split-complementary colors differ from the complementary color scheme. The scheme consists of three colors, the original color and two neighbors of the complement color.



454851



4F4741



3E4B4D

Square

The Square scheme is like the rectangle color scheme, but the four colors are evenly spaced on the color wheel.



4F4741



424B45



414A50



4F464C

Rectangle

The Rectangle color scheme consists of four colors that form a rectangle on the color wheel.



4F4741



484941



414A50



494850

Sweetspot

The Sweet Spot groups the original color and five complimentary colors.



4F4741



666361



4F4149



333130



B3B3B3



333333

Same Dimension

The Same Dimension uses a secret algorithm to generate beautiful new colors.



4F4741



665A51



4F4E41



262422



662C00



E66200

Inverse Universe

The Inverse Universe completely reimagines the original color for something new.



41494F



515D66



41424F



222526



003A66



0083E6

Previews

White Background



This preview shows how the Hex color 4F4741 looks on a white background.

Color Contrast Check

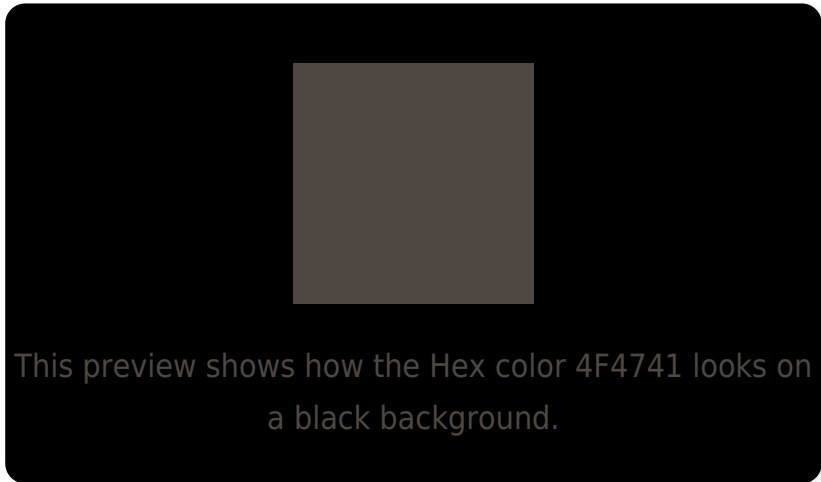
Large Text (above 18pt) WCAG AA ✓ Pass

Any Text WCAG AA ✓ Pass

Large Text (above 18pt) WCAG AAA ✓ Pass

Any Text WCAG AAA ✓ Pass

Black Background



Color Contrast Check

Large Text (above 18pt) WCAG AA × Fail

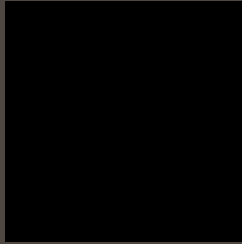
Any Text WCAG AA × Fail

Large Text (above 18pt) WCAG AAA × Fail

Any Text WCAG AAA × Fail

If you want to check with other color combinations, try the [Color Contrast Checker](#).

Hex 4F4741 Background



This preview shows how black text looks on a background with the Hex color 4F4741.

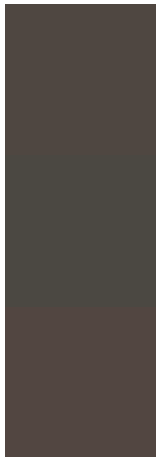


This preview shows how white text looks on a background with the Hex color 4F4741.

Color Blindness Simulation

Color vision deficiency is a very complex topic, and I could not describe the different causes any better than Wikipedia does, so if you want to learn more, you should check out their [article about color blindness](#).

Dichromacy



Original Color
4F4741

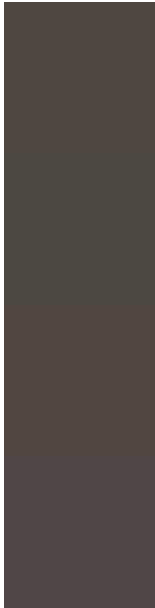
Protanopia
4B4842

Deuteranopia
524641



Tritanopia
50464B

Trichromacy



Original Color

4F4741

Protanomaly

4C4842

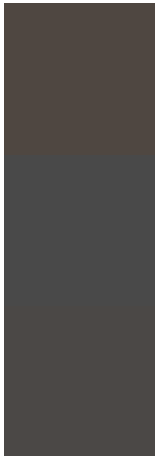
Deuteranomaly

514641

Tritanomaly

504647

Monochromacy



Original Color

4F4741

Achromatopsia

494949

Achromatomaly

4B4846

CSS Examples

Text

The CSS property to change the color of the text to Hex 4F4741 is called "color". The color property can be set on classes, ids or directly on the HTML element.

This example shows how text in the color #4F4741 looks like.

```
.text, #text, p{  
    color:#4F4741  
}
```

If you want to add a text shadow in that color use the text-shadow property, you can generate a text shadow directly with our [CSS Text Shadow Generator](#).

Here you see how black text with a 4 pixel #4F4741 colored shadow looks like.

```
.shadow{ text-shadow: 4px 4px 2px #4F4741
}
```

Border

The CSS property to change the border of an element to Hex 4F4741 is called "border". The border property can be set on classes, ids or directly on the HTML element.

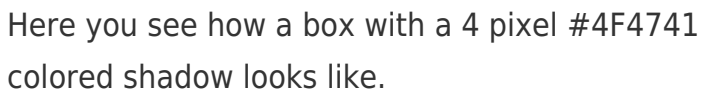
This example shows the color as border, it can be applied via the CSS property "border" or "border-color".

```
.border, #border, table{ border:4px solid
#4F4741 }
```

If only the border color should be changed use the property `border-color`.

```
.border{ border-color:#4F4741 }
```

If you want to add a box shadow in that color use:



Here you see how a box with a 4 pixel #4F4741 colored shadow looks like.

```
.boxshadow{ -moz-box-shadow:4px 4px 4px  
4px #4F4741; -webkit-box-shadow:4px 4px  
4px 4px #4F4741; box-shadow:4px 4px 4px  
4px #4F4741 }
```

Background

The CSS property to change the background color of an element to Hex 4F4741 is called "background". The background property can be set on classes, ids or directly on the HTML element.

```
.background, #background, body{  
background:#4F4741 }
```

If only the background color should be changed can be used:

```
.background{ background-color:#4F4741 }
```

This example shows the color as background, it is applied via the CSS property "background".

To optimize and compress your CSS code, you can use our [online CSS compressor and optimizer](#) based on csstidy. If you want to create a linear or radial gradient as background or border, check our [CSS Gradient Generator](#).

Hey! You found this booklet interesting? Support Converting Colors with the new Membership Option!

The pro membership hides all ads, plus gives you double the colors in the color bucket, and more awesome pro features!

[Learn more, Memberships starting at \\$2.50/m!](#)

**Follow me
on Twitter!**

@ConvertingColor