

Converting Colors

Hex(503E40)

Have a look what the booklet for
Hex(503E40) contains.

Hex(503E40)	3
<i>Conversions</i>	4
<i>Details</i>	6
<i>Harmonies</i>	11
<i>Previews</i>	23
<i>Color Blindness Simulation</i>	26
<i>CSS Examples</i>	29

Color

Hex(503E40)

Conversions

Conversions Part 1

Format	Color
Hex	503E40
RGB	80, 62, 64
RGB Percent	31%, 24%, 25%
CMY	0.6863, 0.7569, 0.7490
CMYK	0.00, 0.22, 0.20, 0.69
HSL	353°, 13%, 28%
HSV	353°, 22%, 31%
XYZ	5.9563, 5.5209, 5.6022
YIQ	67.6100, 10.0860, 4.4380

Conversions

Conversions Part 2

Format	Color
R_{YB}	80, 62, 64
Decimal	5258816
CIE Lab	28.17, 8.21, 1.77
CIE LCh	28, 8.402, 12.150
Yxy	5.5209, 0.3487, 0.3232
Android (android.graphics.Color)	4283448896 (0xFF503E40)
YUV	67.6100, -1.7797, 10.8660
Hunter-Lab	23.4966, 4.1302, 2.3113

Details

The Hex color **503E40** is a dark color, and the websafe version is hex **333333**. A complement of this color would be **3E504E**, and the grayscale version is **444444**.

A 20% lighter version of the original color is **826E70**, and **231416** is the 20% darker color. If you saturate the color by 10%, you get **503639**, and if you desaturate by 10%, it is **504647**.

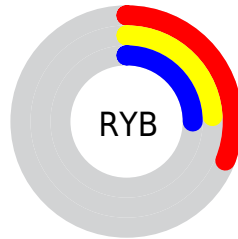
Distribution



 Red (31%)

 Green (24%)

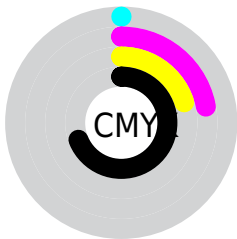
 Blue (25%)



 Red (31%)

 Yellow (24%)

 Blue (25%)

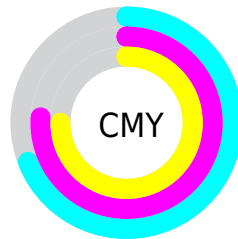


 Cyan (0%)

 Magenta (22%)

 Yellow (20%)

 Black (69%)



 Cyan (69%)

 Magenta (76%)

 Yellow (75%)

Brightness & Saturation Gradients

These gradients show how the Hex color 503E40 changes by changing the brightness by 10 percent. The first figure shows a shift by +10% for each color and the second figure -10%.

Similar to the brightness gradients but the following saturation gradients show a change of the Hex color 503E40 by changing the saturation by 10% instead.

■ 503E40

■ 503E40

FFFFFF

■ 39282A

■ 826E70

■ 231416

■ 9C8789

■ 010000

■ B7A1A3

■ 000000

■ D2BCBE

■ EFD8DA

■ FFF4F7

■ 503E40

■ 503E40

■ 503639

■ 504647

■ 502E32

■ 504E4E

■ 50262B

■ 505655

■ 501E24

■ 505E5C

■ 50161C

■ 506664

■ 500E15

■ 506E6B

■ 50060E

■ 507672

■ 500009

■ 507E79

■ 508680

Harmonies

Analogous

The Analogous color harmony consists of three colors that are next to each other on the color wheel.



4D3E47



503E40



4F3F3A

Triad

The Triadic color harmony groups three colors that are evenly spaced from another and form a triangle on the color wheel.



503E40



3D4539



37444F

Complementary

The Complementary color scheme is a pair of colors which are on the opposite of each other on the color wheel.



503E40



3E504E

Split Complementary

Split-complementary colors differ from the complementary color scheme. The scheme consists of three colors, the original color and two neighbors of the complement color.



32464B



503E40



37463E

Square

The Square scheme is like the rectangle color scheme, but the four colors are evenly spaced on the color wheel.



503E40



454336



324645



3F424F

Rectangle

The Rectangle color scheme consists of four colors that form a rectangle on the color wheel.



503E40



4D4037



324645



35454E

Sweetspot

The Sweet Spot groups the original color and five complimentary colors.



503E40



696162



4E3E50



363132



B5B5B5



363636

Same Dimension

The Same Dimension uses a secret algorithm to generate beautiful new colors.



503E40



694C4F



50453E



292525



69000C



E8001A

Inverse Universe

The Inverse Universe completely reimagines the original color for something new.



503E40



694C4F



3E4950



292525



69000C



E8001A

Previews

White Background



This preview shows how the Hex color 503E40 looks on a white background.

Color Contrast Check

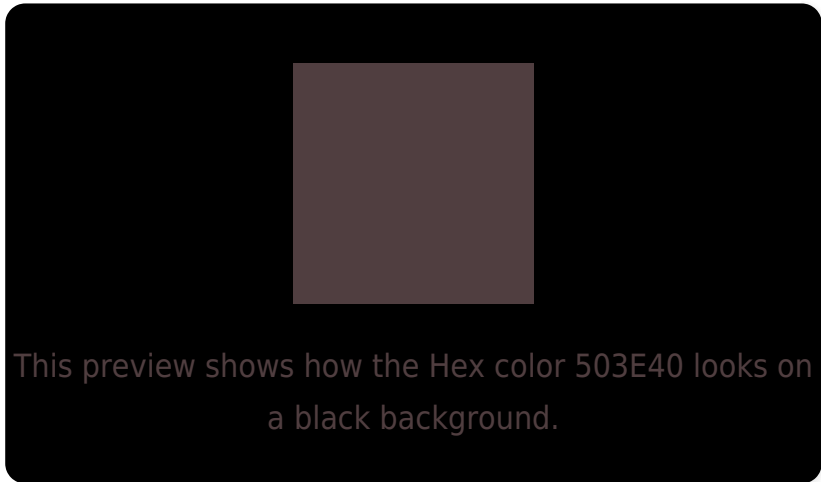
Large Text (above 18pt) WCAG AA ✓ Pass

Any Text WCAG AA ✓ Pass

Large Text (above 18pt) WCAG AAA ✓ Pass

Any Text WCAG AAA ✓ Pass

Black Background



Color Contrast Check

Large Text (above 18pt) WCAG AA × Fail

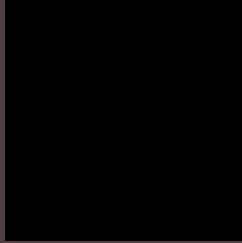
Any Text WCAG AA × Fail

Large Text (above 18pt) WCAG AAA × Fail

Any Text WCAG AAA × Fail

If you want to check with other color combinations, try the [Color Contrast Checker](#).

Hex 503E40 Background



This preview shows how black text looks on a background with the Hex color 503E40.

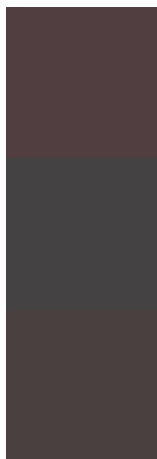


This preview shows how white text looks on a background with the Hex color 503E40.

Color Blindness Simulation

Color vision deficiency is a very complex topic, and I could not describe the different causes any better than Wikipedia does, so if you want to learn more, you should check out their [article about color blindness](#).

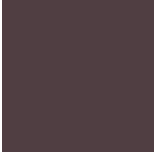
Dichromacy



Original Color
503E40

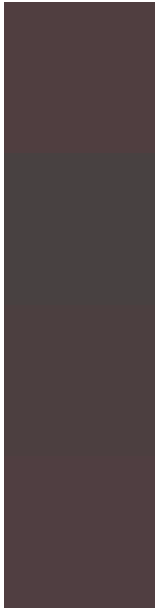
Protanopia
444242

Deuteranopia
4A4040



Tritanopia
503E42

Trichromacy



Original Color

503E40

Protanomaly

484141

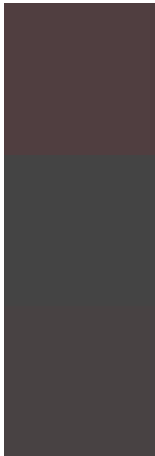
Deuteranomaly

4C3F40

Tritanomaly

503E41

Monochromacy



Original Color

503E40

Achromatopsia

444444

Achromatomaly

484243

CSS Examples

Text

The CSS property to change the color of the text to Hex 503E40 is called "color". The color property can be set on classes, ids or directly on the HTML element.

This example shows how text in the color #503E40 looks like.

```
.text, #text, p{  
    color:#503E40  
}
```

If you want to add a text shadow in that color use the text-shadow property, you can generate a text shadow directly with our [CSS Text Shadow Generator](#).

Here you see how black text with a 4 pixel #503E40 colored shadow looks like.

```
.shadow{ text-shadow: 4px 4px 2px #503E40
}
```

Border

The CSS property to change the border of an element to Hex 503E40 is called "border". The border property can be set on classes, ids or directly on the HTML element.

This example shows the color as border, it can be applied via the CSS property "border" or "border-color".

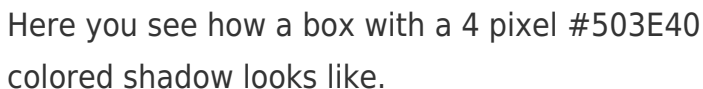
```
.border, #border, table{ border:4px solid
#503E40 }
```

If only the border color should be changed use the property `border-color`.

```
.border{ border-color:#503E40 }
```

If you want to add a box shadow in that color use:

Here you see how a box with a 4 pixel #503E40 colored shadow looks like.



```
.boxshadow{ -moz-box-shadow:4px 4px 4px  
4px #503E40; -webkit-box-shadow:4px 4px  
4px 4px #503E40; box-shadow:4px 4px 4px  
4px #503E40 }
```

Background

The CSS property to change the background color of an element to Hex 503E40 is called "background". The background property can be set on classes, ids or directly on the HTML element.

```
.background, #background, body{  
background:#503E40 }
```

If only the background color should be changed can be used:

```
.background{ background-color:#503E40 }
```

This example shows the color as background, it is applied via the CSS property "background".

To optimize and compress your CSS code, you can use our [online CSS compressor and optimizer](#) based on csstidy. If you want to create a linear or radial gradient as background or border, check our [CSS Gradient Generator](#).

Hey! You found this booklet interesting? Support Converting Colors with the new Membership Option!

The pro membership hides all ads, plus gives you double the colors in the color bucket, and more awesome pro features!

[Learn more, Memberships starting at \\$2.50/m!](#)

**Follow me
on Twitter!**

@ConvertingColor