

# Converting Colors

Hex(504213)

Have a look what the booklet for  
Hex(504213) contains.

<b>Hex(504213)</b> .....	3
<i><b>Conversions</b></i> .....	4
<i><b>Details</b></i> .....	6
<i><b>Harmonies</b></i> .....	11
<i><b>Previews</b></i> .....	23
<i><b>Color Blindness Simulation</b></i> .....	26
<i><b>CSS Examples</b></i> .....	29

**Color**

**Hex(504213)**

# Conversions

## Conversions Part 1

<b>Format</b>	<b>Color</b>
Hex	504213
RGB	80, 66, 19
RGB Percent	31%, 26%, 7%
CMY	0.6863, 0.7412, 0.9255
CMYK	0.00, 0.18, 0.76, 0.69
HSL	46°, 62%, 19%
HSV	46°, 76%, 31%
XYZ	5.3740, 5.6489, 1.4232
YIQ	64.8280, 23.4310, -11.6490

# Conversions

## Conversions Part 2

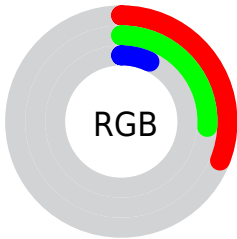
<b>Format</b>	<b>Color</b>
<b>R<sub>YB</sub></b>	37, 80, 19
Decimal	5259795
CIE Lab	28.51, 0.06, 29.63
CIE LCh	29, 29.627, 89.887
Yxy	5.6489, 0.4318, 0.4539
Android (android.graphics.Color)	4283449875 (0xFF504213)
YUV	64.8280, -22.5932, 13.3058
Hunter-Lab	23.7675, -1.2327, 13.0869

# Details

The Hex color **504213** is a dark color, and the websafe version is hex **333300**. A complement of this color would be **132150**, and the grayscale version is **414141**.

A 20% lighter version of the original color is **837241**, and **201800** is the 20% darker color. If you saturate the color by 10%, you get **50400B**, and if you desaturate by 10%, it is **50441B**.

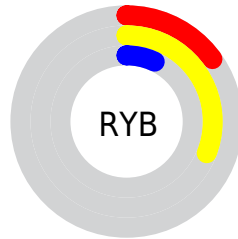
# Distribution



Red (31%)

Green (26%)

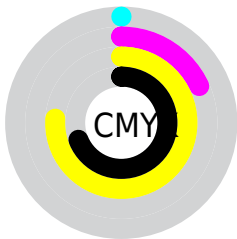
Blue (7%)



Red (15%)

Yellow (31%)

Blue (7%)

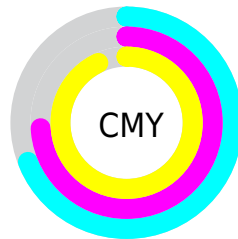


Cyan (0%)

Magenta (18%)

Yellow (76%)

Black (69%)



Cyan (69%)

Magenta (74%)

Yellow (93%)

# Brightness & Saturation Gradients

These gradients show how the Hex color 504213 changes by changing the brightness by 10 percent. The first figure shows a shift by +10% for each color and the second figure -10%.

Similar to the brightness gradients but the following saturation gradients show a change of the Hex color 504213 by changing the saturation by 10% instead.



 504213

 504213

 FFFFFA

 382C00

 837241

 201800

 9E8B59

 000000

 BAA571

 D6C08B

 F3DCA6

 FFF9C1

 FFFFDD

 504213

 504213

■ 50400B

■ 50441B

■ 503E03

■ 504623

■ 503E00

■ 50482B

■ 504933

■ 504B3B

■ 504D43

■ 504F4B

■ 505153

■ 50535B

# Harmonies

## Analogous

The Analogous color harmony consists of three colors that are next to each other on the color wheel.



623A1C



504213



394919

# Triad

The Triadic color harmony groups three colors that are evenly spaced from another and form a triangle on the color wheel.



504213



004E59



5F345A

# Complementary

The Complementary color scheme is a pair of colors which are on the opposite of each other on the color wheel.



504213



132150

# Split Complementary

Split-complementary colors differ from the complementary color scheme. The scheme consists of three colors, the original color and two neighbors of the complement color.



443D6B



504213



004B6A

# Square

The Square scheme is like the rectangle color scheme, but the four colors are evenly spaced on the color wheel.



504213



004E42



104671



6C2F44

# Rectangle

The Rectangle color scheme consists of four colors that form a rectangle on the color wheel.



504213



264C25



104671



583761



# Sweetspot

The Sweet Spot groups the original color and five complimentary colors.



504213



696351



501321



363227



B5B5B5



363636



# Same Dimension

The Same Dimension uses a secret algorithm to generate beautiful new colors.



504213



695208



405013



292825



695100



E8B300



# Inverse Universe

The Inverse Universe completely reimagines the original color for something new.



132150



081E69



231350



252629



001869



0035E8



# Previews

## White Background



This preview shows how the Hex color 504213 looks on a white background.

## Color Contrast Check

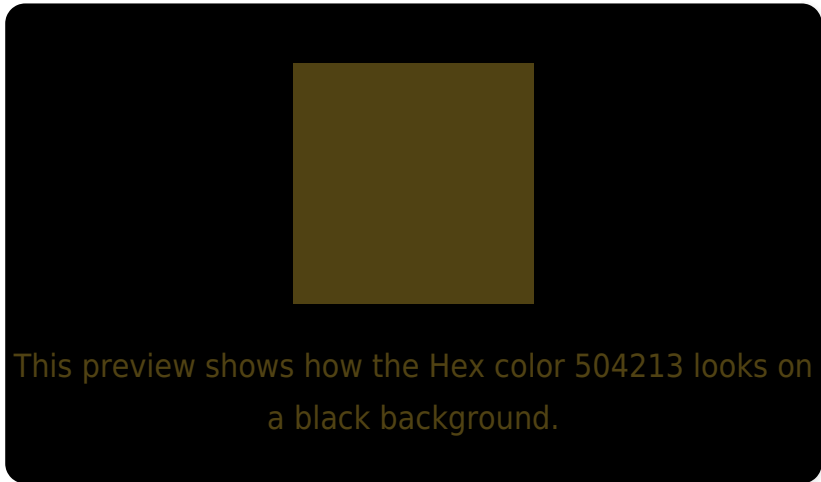
Large Text (above 18pt) WCAG AA ✓ Pass

Any Text WCAG AA ✓ Pass

Large Text (above 18pt) WCAG AAA ✓ Pass

Any Text WCAG AAA ✓ Pass

# Black Background



## Color Contrast Check

Large Text (above 18pt) WCAG AA × Fail

Any Text WCAG AA × Fail

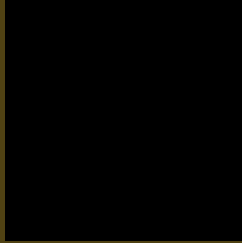
Large Text (above 18pt) WCAG AAA × Fail

Any Text WCAG AAA × Fail

If you want to check with other color combinations, try the [Color Contrast Checker](#).



## Hex 504213 Background



This preview shows how black text looks on a background with the Hex color 504213.



This preview shows how white text looks on a background with the Hex color 504213.

# Color Blindness Simulation

Color vision deficiency is a very complex topic, and I could not describe the different causes any better than Wikipedia does, so if you want to learn more, you should check out their [article about color blindness](#).

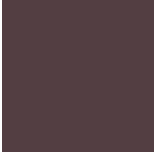
## Dichromacy



**Original Color**  
504213

**Protanopia**  
4C4413

**Deuteranopia**  
554014



**Tritanopia**  
533E42

# Trichromacy



**Original Color**  
504213

**Protanomaly**  
4D4313

**Deuteranomaly**  
534114

**Tritanomaly**  
523F31

# Monochromacy



**Original Color**  
504213

**Achromatopsia**  
414141

**Achromatomaly**  
464130

# CSS Examples

## Text

The CSS property to change the color of the text to Hex 504213 is called "color". The color property can be set on classes, ids or directly on the HTML element.

This example shows how text in the color #504213 looks like.

```
.text, #text, p{  
    color:#504213  
}
```

If you want to add a text shadow in that color use the text-shadow property, you can generate a text shadow directly with our [CSS Text Shadow Generator](#).

Here you see how black text with a 4 pixel #504213 colored shadow looks like.

```
.shadow{ text-shadow: 4px 4px 2px #504213
}
```

## Border

The CSS property to change the border of an element to Hex 504213 is called "border". The border property can be set on classes, ids or directly on the HTML element.

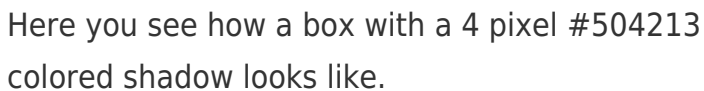
This example shows the color as border, it can be applied via the CSS property "border" or "border-color".

```
.border, #border, table{ border:4px solid
#504213 }
```

If only the border color should be changed use the property `border-color`.

```
.border{ border-color:#504213 }
```

If you want to add a box shadow in that color use:



Here you see how a box with a 4 pixel #504213 colored shadow looks like.

```
.boxshadow{ -moz-box-shadow:4px 4px 4px  
4px #504213; -webkit-box-shadow:4px 4px  
4px 4px #504213; box-shadow:4px 4px 4px  
4px #504213 }
```

# Background

The CSS property to change the background color of an element to Hex 504213 is called "background". The background property can be set on classes, ids or directly on the HTML element.

```
.background, #background, body{  
background:#504213 }
```

If only the background color should be changed can be used:

```
.background{ background-color:#504213 }
```

This example shows the color as background, it is applied via the CSS property "background".

To optimize and compress your CSS code, you can use our [online CSS compressor and optimizer](#) based on csstidy. If you want to create a linear or radial gradient as background or border, check our [CSS Gradient Generator](#).



Hey! You found this booklet interesting? Support Converting Colors with the new Membership Option!

The pro membership hides all ads, plus gives you double the colors in the color bucket, and more awesome pro features!

**[Learn more, Memberships starting at \\$2.50/m!](#)**

**Follow me  
on Twitter!**

@ConvertingColor