

Converting Colors

Hex(512929)

Have a look what the booklet for
Hex(512929) contains.

Hex(512929)	3
<i>Conversions</i>	4
<i>Details</i>	6
<i>Harmonies</i>	11
<i>Previews</i>	23
<i>Color Blindness Simulation</i>	26
<i>CSS Examples</i>	29

Color

Hex(512929)

Conversions

Conversions Part 1

Format	Color
Hex	512929
RGB	81, 41, 41
RGB Percent	32%, 16%, 16%
CMY	0.6824, 0.8392, 0.8392
CMYK	0.00, 0.49, 0.49, 0.68
HSL	0°, 33%, 24%
HSV	0°, 49%, 32%
XYZ	4.5865, 3.4953, 2.5307
YIQ	52.9600, 23.8400, 8.4800

Conversions

Conversions Part 2

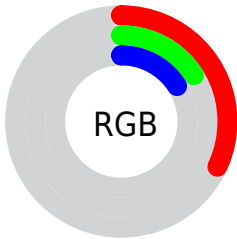
Format	Color
R_{YB}	81, 41, 41
Decimal	5318953
CIE Lab	21.93, 18.55, 8.32
CIE LCh	22, 20.332, 24.141
Yxy	3.4953, 0.4322, 0.3294
Android (android.graphics.Color)	4283509033 (0xFF512929)
YUV	52.9600, -5.8963, 24.5911
Hunter-Lab	18.6957, 11.0729, 5.0612

Details

The Hex color **512929** is a dark color, and the websafe version is hex **663333**. A complement of this color would be **295151**, and the grayscale version is **353535**.

A 20% lighter version of the original color is **845756**, and **240000** is the 20% darker color. If you saturate the color by 10%, you get **512121**, and if you desaturate by 10%, it is **513131**.

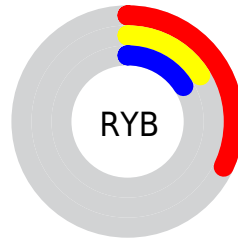
Distribution



Red (32%)

Green (16%)

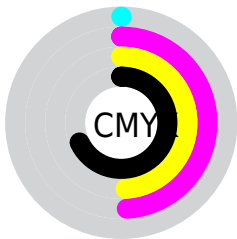
Blue (16%)



Red (32%)

Yellow (16%)

Blue (16%)

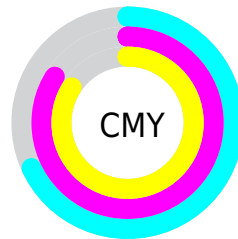


Cyan (0%)

Magenta (49%)

Yellow (49%)

Black (68%)



Cyan (68%)

Magenta (84%)

Yellow (84%)

Brightness & Saturation Gradients

These gradients show how the Hex color 512929 changes by changing the brightness by 10 percent. The first figure shows a shift by +10% for each color and the second figure -10%.

Similar to the brightness gradients but the following saturation gradients show a change of the Hex color 512929 by changing the saturation by 10% instead.

■ 512929

■ 512929

FFFFFF

■ 391415

■ 845756

■ 240000

■ 9F706E

■ 000000

■ BB8988

■ D7A4A2

■ F4BFBD

■ FFDBD9

■ FFF8F5

■ 512929

■ 512929

■ 512121

■ 513131

■ 511919

■ 513939

■ 511111

■ 514141

■ 510909

■ 514949

■ 510101

■ 515252

■ 510000

■ 515A5A

■ 516262

■ 516A6A

■ 517272

Harmonies

Analogous

The Analogous color harmony consists of three colors that are next to each other on the color wheel.



4F2838



512929



4B2D1D

Triad

The Triadic color harmony groups three colors that are evenly spaced from another and form a triangle on the color wheel.



512929



203B22



153752

Complementary

The Complementary color scheme is a pair of colors which are on the opposite of each other on the color wheel.



512929



295151

Split Complementary

Split-complementary colors differ from the complementary color scheme. The scheme consists of three colors, the original color and two neighbors of the complement color.



003A4D



512929



053C31

Square

The Square scheme is like the rectangle color scheme, but the four colors are evenly spaced on the color wheel.



512929



323718



003C40



313250

Rectangle

The Rectangle color scheme consists of four colors that form a rectangle on the color wheel.



512929



453117



003C40



063851

Sweetspot

The Sweet Spot groups the original color and five complimentary colors.



512929



695959



512951



362C2C



B5B5B5



363636

Same Dimension

The Same Dimension uses a secret algorithm to generate beautiful new colors.



512929



692B2B



513D29



292525



690000



E80000

Inverse Universe

The Inverse Universe completely reimagines the original color for something new.



295151



2B6969



293D51



252929



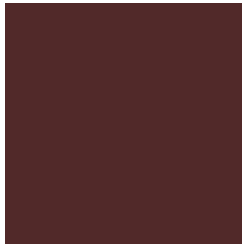
006969



00E8E8

Previews

White Background



This preview shows how the Hex color 512929 looks on a white background.

Color Contrast Check

Large Text (above 18pt) WCAG AA ✓ Pass

Any Text WCAG AA ✓ Pass

Large Text (above 18pt) WCAG AAA ✓ Pass

Any Text WCAG AAA ✓ Pass

Black Background



Color Contrast Check

Large Text (above 18pt) WCAG AA × Fail

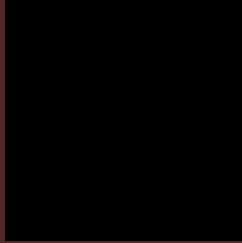
Any Text WCAG AA × Fail

Large Text (above 18pt) WCAG AAA × Fail

Any Text WCAG AAA × Fail

If you want to check with other color combinations, try the [Color Contrast Checker](#).

Hex 512929 Background



This preview shows how black text looks on a background with the Hex color 512929.



This preview shows how white text looks on a background with the Hex color 512929.

Color Blindness Simulation

Color vision deficiency is a very complex topic, and I could not describe the different causes any better than Wikipedia does, so if you want to learn more, you should check out their [article about color blindness](#).

Dichromacy



Original Color
512929

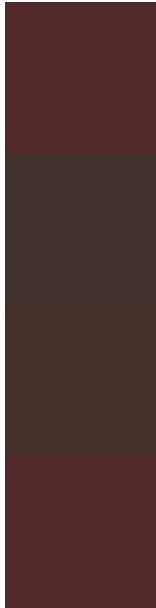
Protanopia
38352F

Deuteranopia
3F3327



Tritanopia
51292B

Trichromacy



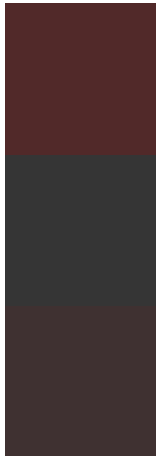
Original Color
512929

Protanomaly
41312D

Deuteranomaly
462F28

Tritanomaly
51292A

Monochromacy



Original Color
512929

Achromatopsia
353535

Achromatomaly
3F3131

CSS Examples

Text

The CSS property to change the color of the text to Hex 512929 is called "color". The color property can be set on classes, ids or directly on the HTML element.

This example shows how text in the color #512929 looks like.

```
.text, #text, p{  
    color:#512929  
}
```

If you want to add a text shadow in that color use the text-shadow property, you can generate a text shadow directly with our [CSS Text Shadow Generator](#).

Here you see how black text with a 4 pixel #512929 colored shadow looks like.

```
.shadow{ text-shadow: 4px 4px 2px #512929
}
```

Border

The CSS property to change the border of an element to Hex 512929 is called "border". The border property can be set on classes, ids or directly on the HTML element.

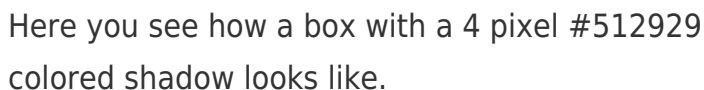
This example shows the color as border, it can be applied via the CSS property "border" or "border-color".

```
.border, #border, table{ border:4px solid
#512929 }
```

If only the border color should be changed use the property `border-color`.

```
.border{ border-color:#512929 }
```

If you want to add a box shadow in that color use:



Here you see how a box with a 4 pixel #512929 colored shadow looks like.

```
.boxshadow{ -moz-box-shadow:4px 4px 4px  
4px #512929; -webkit-box-shadow:4px 4px  
4px 4px #512929; box-shadow:4px 4px 4px  
4px #512929 }
```

Background

The CSS property to change the background color of an element to Hex 512929 is called "background". The background property can be set on classes, ids or directly on the HTML element.

```
.background, #background, body{  
background:#512929 }
```

If only the background color should be changed can be used:

```
.background{ background-color:#512929 }
```

This example shows the color as background, it is applied via the CSS property "background".

To optimize and compress your CSS code, you can use our [online CSS compressor and optimizer](#) based on csstidy. If you want to create a linear or radial gradient as background or border, check our [CSS Gradient Generator](#).

Hey! You found this booklet interesting? Support Converting Colors with the new Membership Option!

The pro membership hides all ads, plus gives you double the colors in the color bucket, and more awesome pro features!

[Learn more, Memberships starting at \\$2.50/m!](#)

**Follow me
on Twitter!**

@ConvertingColor