

# Converting Colors

Hex(512E31)

Have a look what the booklet for  
Hex(512E31) contains.

<b>Hex(512E31)</b> .....	3
<b><i>Conversions</i></b> .....	4
<b><i>Details</i></b> .....	6
<b><i>Harmonies</i></b> .....	11
<b><i>Previews</i></b> .....	23
<b><i>Color Blindness Simulation</i></b> .....	26
<b><i>CSS Examples</i></b> .....	29

# Color

**Hex(512E31)**

# Conversions

## Conversions Part 1

Format	Color
Hex	512E31
RGB	81, 46, 49
RGB Percent	32%, 18%, 19%
CMY	0.6824, 0.8196, 0.8078
CMYK	0.00, 0.43, 0.40, 0.68
HSL	355°, 28%, 25%
HSV	355°, 43%, 32%
XYZ	4.9247, 3.9251, 3.4038
YIQ	56.8070, 19.8970, 8.3530

# Conversions

## Conversions Part 2

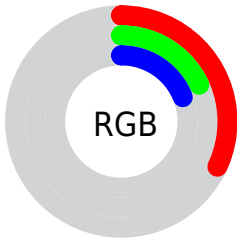
<b>Format</b>	<b>Color</b>
<b>R<sub>YB</sub></b>	81, 46, 49
Decimal	5320241
CIE <sub>Lab</sub>	23.42, 16.48, 4.97
CIE <sub>LCh</sub>	23, 17.211, 16.770
Yxy	3.9251, 0.4019, 0.3203
Android (android.graphics.Color)	4283510321 (0xFF512E31)
YUV	56.8070, -3.8489, 21.2173
Hunter-Lab	19.8118, 9.7000, 3.6819

# Details

The Hex color **512E31** is a dark color, and the websafe version is hex **663333**. A complement of this color would be **2E514E**, and the grayscale version is **393939**.

A 20% lighter version of the original color is **845C5F**, and **250001** is the 20% darker color. If you saturate the color by 10%, you get **51262A**, and if you desaturate by 10%, it is **513638**.

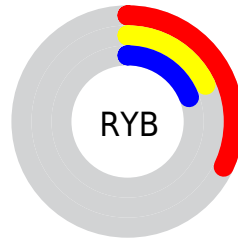
# Distribution



Red (32%)

Green (18%)

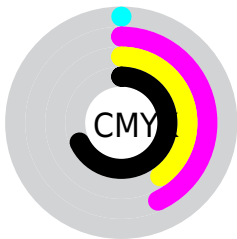
Blue (19%)



Red (32%)

Yellow (18%)

Blue (19%)

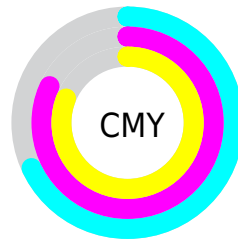


Cyan (0%)

Magenta (43%)

Yellow (40%)

Black (68%)



Cyan (68%)

Magenta (82%)

Yellow (81%)

# Brightness & Saturation Gradients

These gradients show how the Hex color 512E31 changes by changing the brightness by 10 percent. The first figure shows a shift by +10% for each color and the second figure -10%.

Similar to the brightness gradients but the following saturation gradients show a change of the Hex color 512E31 by changing the saturation by 10% instead.





512E31



512E31

FFFFFF



39191C



845C5F



250001



9E7578



000000



BA8F91



D6AAAC



F2C5C7



FFE1E3



FFFEFF



512E31



512E31

■ 51262A

■ 513638

■ 511E22

■ 513E40

■ 51161B

■ 514647

■ 510E13

■ 514E4F

■ 51060C

■ 515756

■ 510007

■ 515F5D

■ 516765

■ 516F6C

■ 517774

# Harmonies

## Analogous

The Analogous color harmony consists of three colors that are next to each other on the color wheel.



4D2E3E



512E31



4E3126

# Triad

The Triadic color harmony groups three colors that are evenly spaced from another and form a triangle on the color wheel.



512E31



2B3C26



1B3B51

# Complementary

The Complementary color scheme is a pair of colors which are on the opposite of each other on the color wheel.



512E31



2E514E

# Split Complementary

Split-complementary colors differ from the complementary color scheme. The scheme consists of three colors, the original color and two neighbors of the complement color.



063E4A



512E31



1A3E31

# Square

The Square scheme is like the rectangle color scheme, but the four colors are evenly spaced on the color wheel.



512E31



39391F



083F3F



313750

# Rectangle

The Rectangle color scheme consists of four colors that form a rectangle on the color wheel.



512E31



493420



083F3F



133C4F



# Sweetspot

The Sweet Spot groups the original color and five complimentary colors.



512E31



695B5C



4E2E51



362D2E



B5B5B5



363636



# Same Dimension

The Same Dimension uses a secret algorithm to generate beautiful new colors.



512E31



693237



513C2E



292525



690009



E80014



# Inverse Universe

The Inverse Universe completely reimagines the original color for something new.



512E31



693237



2E4351



292525



690009

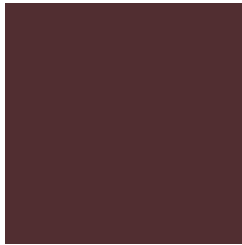


E80014



# Previews

## White Background



This preview shows how the Hex color 512E31 looks on a white background.

## Color Contrast Check

Large Text (above 18pt) WCAG AA ✓ Pass

Any Text WCAG AA ✓ Pass

Large Text (above 18pt) WCAG AAA ✓ Pass

Any Text WCAG AAA ✓ Pass

# Black Background



## Color Contrast Check

Large Text (above 18pt) WCAG AA × Fail

Any Text WCAG AA × Fail

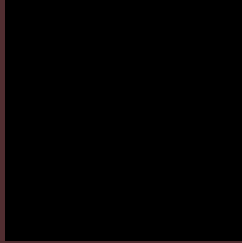
Large Text (above 18pt) WCAG AAA × Fail

Any Text WCAG AAA × Fail

If you want to check with other color combinations, try the [Color Contrast Checker](#).



## Hex 512E31 Background



This preview shows how black text looks on a background with the Hex color 512E31.

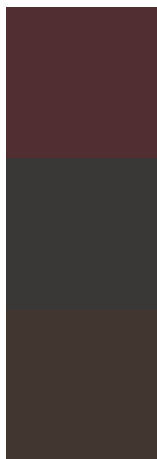


This preview shows how white text looks on a background with the Hex color 512E31.

# Color Blindness Simulation

Color vision deficiency is a very complex topic, and I could not describe the different causes any better than Wikipedia does, so if you want to learn more, you should check out their [article about color blindness](#).

## Dichromacy



**Original Color**  
512E31

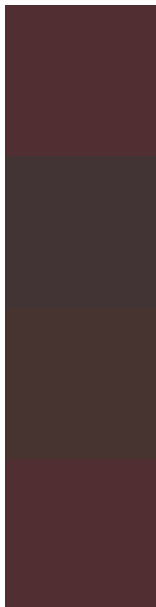
**Protanopia**  
3A3836

**Deuteranopia**  
413630



**Tritanopia**  
512E31

# Trichromacy



**Original Color**

512E31

**Protanomaly**

423434

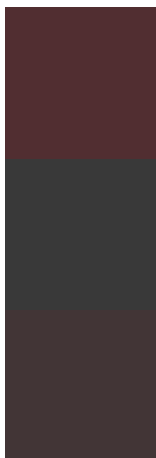
**Deuteranomaly**

473330

**Tritanomaly**

512E31

# Monochromacy



**Original Color**

512E31

**Achromatopsia**

393939

**Achromatomaly**

423536

# CSS Examples

## Text

The CSS property to change the color of the text to Hex 512E31 is called "color". The color property can be set on classes, ids or directly on the HTML element.

This example shows how text in the color #512E31 looks like.

```
.text, #text, p{  
    color:#512E31  
}
```

If you want to add a text shadow in that color use the text-shadow property, you can generate a text shadow directly with our [CSS Text Shadow Generator](#).

Here you see how black text with a 4 pixel #512E31 colored shadow looks like.

```
.shadow{ text-shadow: 4px 4px 2px #512E31
}
```

## Border

The CSS property to change the border of an element to Hex 512E31 is called "border". The border property can be set on classes, ids or directly on the HTML element.

This example shows the color as border, it can be applied via the CSS property "border" or "border-color".

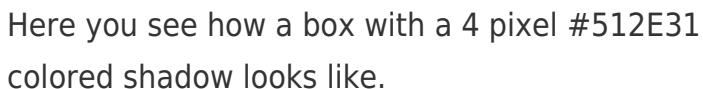
```
.border, #border, table{ border:4px solid
#512E31 }
```

If only the border color should be changed use the property `border-color`.

```
.border{ border-color:#512E31 }
```

If you want to add a box shadow in that color use:

Here you see how a box with a 4 pixel #512E31 colored shadow looks like.

A rectangular box with a dark red border and a dark red shadow. The box is white with a thin dark red border on the top and left sides, and a thicker dark red shadow on the bottom and right sides.

```
.boxshadow{ -moz-box-shadow:4px 4px 4px  
4px #512E31; -webkit-box-shadow:4px 4px  
4px 4px #512E31; box-shadow:4px 4px 4px  
4px #512E31 }
```

# Background

The CSS property to change the background color of an element to Hex 512E31 is called "background". The background property can be set on classes, ids or directly on the HTML element.

```
.background, #background, body{  
background:#512E31 }
```

If only the background color should be changed can be used:

```
.background{ background-color:#512E31 }
```

This example shows the color as background, it is applied via the CSS property "background".

To optimize and compress your CSS code, you can use our [online CSS compressor and optimizer](#) based on csstidy. If you want to create a linear or radial gradient as background or border, check our [CSS Gradient Generator](#).



Hey! You found this booklet interesting? Support Converting Colors with the new Membership Option!

The pro membership hides all ads, plus gives you double the colors in the color bucket, and more awesome pro features!

**[Learn more, Memberships starting at \\$2.50/m!](#)**

**Follow me  
on Twitter!**

@ConvertingColor