

Converting Colors

Hex(52353D)

Have a look what the booklet for
Hex(52353D) contains.

Hex(52353D)	3
<i>Conversions</i>	4
<i>Details</i>	6
<i>Harmonies</i>	11
<i>Previews</i>	23
<i>Color Blindness Simulation</i>	26
<i>CSS Examples</i>	29

Color

Hex(52353D)

Conversions

Conversions Part 1

Format	Color
Hex	52353D
RGB	82, 53, 61
RGB Percent	32%, 21%, 24%
CMY	0.6784, 0.7922, 0.7608
CMYK	0.00, 0.35, 0.26, 0.68
HSL	343°, 21%, 26%
HSV	343°, 35%, 32%
XYZ	5.5951, 4.6770, 5.0227
YIQ	62.5830, 14.7160, 8.6360

Conversions

Conversions Part 2

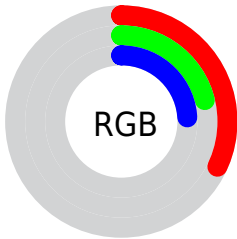
Format	Color
RYB	82, 53, 61
Decimal	5387581
CIELab	25.79, 14.36, 0.33
CIElCh	26, 14.361, 1.318
Yxy	4.6770, 0.3658, 0.3058
Android (android.graphics.Color)	4283577661 (0xFF52353D)
YUV	62.5830, -0.7804, 17.0287
Hunter-Lab	21.6263, 8.3349, 1.3682

Details

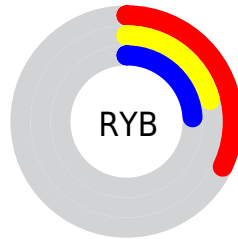
The Hex color **52353D** is a dark color, and the websafe version is hex **663333**. A complement of this color would be **35524A**, and the grayscale version is **3F3F3F**.

A 20% lighter version of the original color is **84646C**, and **250A13** is the 20% darker color. If you saturate the color by 10%, you get **522D37**, and if you desaturate by 10%, it is **523D43**.

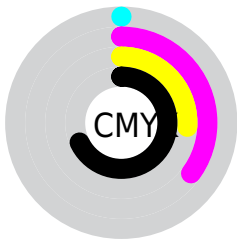
Distribution



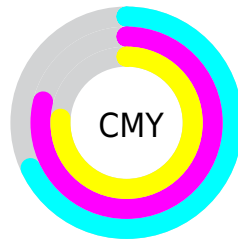
- Red (32%)
- Green (21%)
- Blue (24%)



- Red (32%)
- Yellow (21%)
- Blue (24%)



- Cyan (0%)
- Magenta (35%)
- Yellow (26%)
- Black (68%)



- Cyan (68%)
- Magenta (79%)
- Yellow (76%)

Brightness & Saturation Gradients

These gradients show how the Hex color 52353D changes by changing the brightness by 10 percent. The first figure shows a shift by +10% for each color and the second figure -10%.

Similar to the brightness gradients but the following saturation gradients show a change of the Hex color 52353D by changing the saturation by 10% instead.



52353D



52353D

FFFFFF



3A1F27



84646C



250A13



9F7D86



000000



BA97A0



D6B2BB



F2CDD6



FFEAF3



52353D



52353D



522D37



523D43

■ 522531

■ 524549

■ 521C2B

■ 524E4F

■ 521425

■ 525655

■ 520C1F

■ 525E5B

■ 520419

■ 526661

■ 520017

■ 526E67

■ 52776D

■ 527F72

Harmonies

Analogous

The Analogous color harmony consists of three colors that are next to each other on the color wheel.



4B3748



52353D



523632

Triad

The Triadic color harmony groups three colors that are evenly spaced from another and form a triangle on the color wheel.



52353D



39402A



214150

Complementary

The Complementary color scheme is a pair of colors which are on the opposite of each other on the color wheel.



52353D



35524A

Split Complementary

Split-complementary colors differ from the complementary color scheme. The scheme consists of three colors, the original color and two neighbors of the complement color.



1A4348



52353D



2C4232

Square

The Square scheme is like the rectangle color scheme, but the four colors are evenly spaced on the color wheel.



52353D



443D27



20433D



303E53

Rectangle

The Rectangle color scheme consists of four colors that form a rectangle on the color wheel.



52353D



50382D



20433D



1D424E

Sweetspot

The Sweet Spot groups the original color and five complimentary colors.



52353D



6B5F63



4A3552



362F31



B5B5B5



363636

Same Dimension

The Same Dimension uses a secret algorithm to generate beautiful new colors.



52353D



6B3E4B



523B35



292526



69001D



E80040

Inverse Universe

The Inverse Universe completely reimagines the original color for something new.



52353D



6B3E4B



354C52



292526



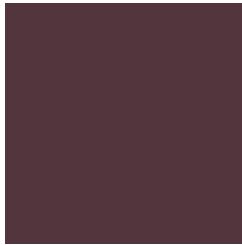
69001D



E80040

Previews

White Background



This preview shows how the Hex color 52353D looks on a white background.

Color Contrast Check

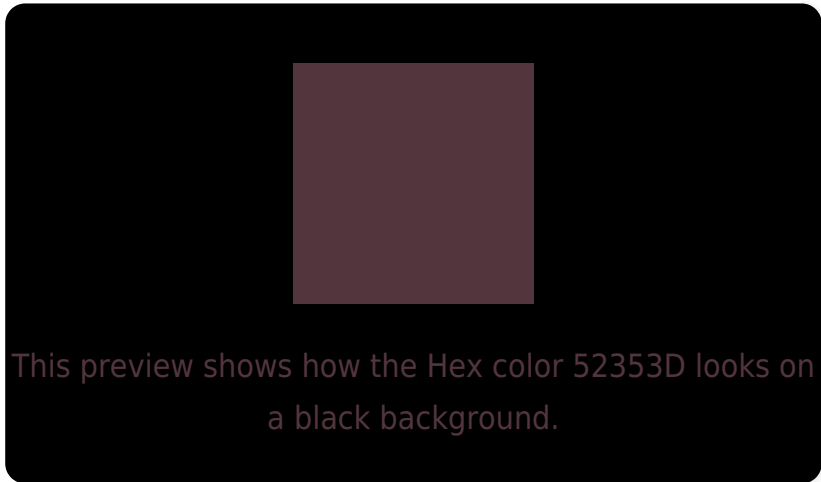
Large Text (above 18pt) WCAG AA ✓ Pass

Any Text WCAG AA ✓ Pass

Large Text (above 18pt) WCAG AAA ✓ Pass

Any Text WCAG AAA ✓ Pass

Black Background



Color Contrast Check

Large Text (above 18pt) WCAG AA × Fail

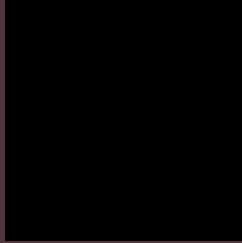
Any Text WCAG AA × Fail

Large Text (above 18pt) WCAG AAA × Fail

Any Text WCAG AAA × Fail

If you want to check with other color combinations, try the [Color Contrast Checker](#).

Hex 52353D Background



This preview shows how black text looks on a background with the Hex color 52353D.



This preview shows how white text looks on a background with the Hex color 52353D.

Color Blindness Simulation

Color vision deficiency is a very complex topic, and I could not describe the different causes any better than Wikipedia does, so if you want to learn more, you should check out their [article about color blindness](#).


Dichromacy



Original Color
52353D

Protanopia
3D3D42

Deuteranopia
443B3C



Tritanopia
52363A

Trichromacy



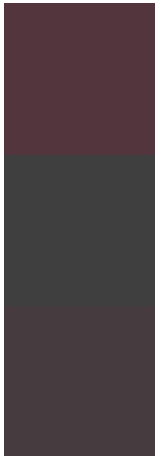
Original Color
52353D

Protanomaly
453A40

Deuteranomaly
49393C

Tritanomaly
52363B

Monochromacy



Original Color
52353D

Achromatopsia
3F3F3F

Achromatomaly
463B3E

CSS Examples

Text

The CSS property to change the color of the text to Hex 52353D is called "color". The color property can be set on classes, ids or directly on the HTML element.

This example shows how text in the color #52353D looks like.

```
.text, #text, p{  
    color:#52353D  
}
```

If you want to add a text shadow in that color use the text-shadow property, you can generate a text shadow directly with our [CSS Text Shadow Generator](#).

Here you see how black text with a 4 pixel #52353D colored shadow looks like.

```
.shadow{ text-shadow: 4px 4px 2px #52353D
}
```

Border

The CSS property to change the border of an element to Hex 52353D is called "border". The border property can be set on classes, ids or directly on the HTML element.

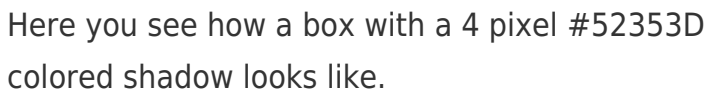
This example shows the color as border, it can be applied via the CSS property "border" or "border-color".

```
.border, #border, table{ border:4px solid
#52353D }
```

If only the border color should be changed use the property `border-color`.

```
.border{ border-color:#52353D }
```

If you want to add a box shadow in that color use:



Here you see how a box with a 4 pixel #52353D colored shadow looks like.

```
.boxshadow{ -moz-box-shadow:4px 4px 4px  
4px #52353D; -webkit-box-shadow:4px 4px  
4px 4px #52353D; box-shadow:4px 4px 4px  
4px #52353D }
```

Background

The CSS property to change the background color of an element to Hex 52353D is called "background". The background property can be set on classes, ids or directly on the HTML element.

```
.background, #background, body{  
background:#52353D }
```

If only the background color should be changed can be used:

```
.background{ background-color:#52353D }
```

This example shows the color as background, it is applied via the CSS property "background".

To optimize and compress your CSS code, you can use our [online CSS compressor and optimizer](#) based on csstidy. If you want to create a linear or radial gradient as background or border, check our [CSS Gradient Generator](#).

Hey! You found this booklet interesting? Support Converting Colors with the new Membership Option!

The pro membership hides all ads, plus gives you double the colors in the color bucket, and more awesome pro features!

[Learn more, Memberships starting at \\$2.50/m!](#)

**Follow me
on Twitter!**

@ConvertingColor