

Converting Colors

Hex(523D2F)

Have a look what the booklet for
Hex(523D2F) contains.

Hex(523D2F)	3
<i>Conversions</i>	4
<i>Details</i>	6
<i>Harmonies</i>	11
<i>Previews</i>	23
<i>Color Blindness Simulation</i>	26
<i>CSS Examples</i>	29

Color

Hex(523D2F)

Conversions

Conversions Part 1

Format	Color
Hex	523D2F
RGB	82, 61, 47
RGB Percent	32%, 24%, 18%
CMY	0.6784, 0.7608, 0.8157
CMYK	0.00, 0.26, 0.43, 0.68
HSL	24°, 27%, 25%
HSV	24°, 43%, 32%
XYZ	5.6615, 5.3366, 3.4210
YIQ	65.6830, 17.0100, 0.0980

Conversions

Conversions Part 2

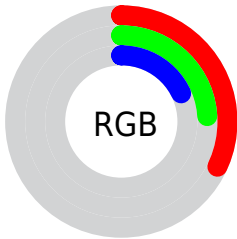
Format	Color
RYB	82, 70, 47
Decimal	5389615
CIELab	27.67, 7.02, 12.19
CIElCh	28, 14.068, 60.045
Yxy	5.3366, 0.3926, 0.3701
Android (android.graphics.Color)	4283579695 (0xFF523D2F)
YUV	65.6830, -9.2107, 14.3100
Hunter-Lab	23.1010, 3.3194, 7.3905

Details

The Hex color **523D2F** is a dark color, and the websafe version is hex **333333**. A complement of this color would be **2F4452**, and the grayscale version is **424242**.

A 20% lighter version of the original color is **846C5D**, and **251300** is the 20% darker color. If you saturate the color by 10%, you get **523827**, and if you desaturate by 10%, it is **524237**.

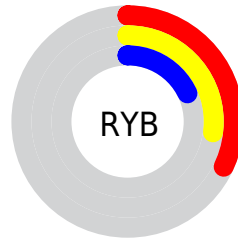
Distribution



Red (32%)

Green (24%)

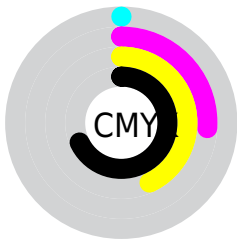
Blue (18%)



Red (32%)

Yellow (27%)

Blue (18%)

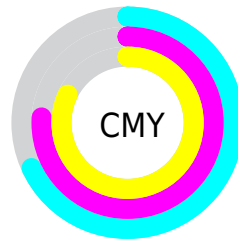


Cyan (0%)

Magenta (26%)

Yellow (43%)

Black (68%)



Cyan (68%)

Magenta (76%)

Yellow (82%)

Brightness & Saturation Gradients

These gradients show how the Hex color 523D2F changes by changing the brightness by 10 percent. The first figure shows a shift by +10% for each color and the second figure -10%.

Similar to the brightness gradients but the following saturation gradients show a change of the Hex color 523D2F by changing the saturation by 10% instead.



523D2F



523D2F

FFFFFF



3A271A



846C5D



251300



9F8676



000000



BAA08F



D6BBAA



F3D7C5



FFF3E1

FFFFFFE



523D2F



523D2F

■ 523827

■ 524237

■ 52331F

■ 52473F

■ 522E16

■ 524C48

■ 52290E

■ 525150

■ 522406

■ 525658

■ 522100

■ 525B60

■ 525F68

■ 526471

■ 526979

Harmonies

Analogous

The Analogous color harmony consists of three colors that are next to each other on the color wheel.



573A37



523D2F



49412C

Triad

The Triadic color harmony groups three colors that are evenly spaced from another and form a triangle on the color wheel.



523D2F



264741



433F54

Complementary

The Complementary color scheme is a pair of colors which are on the opposite of each other on the color wheel.



523D2F



2F4452

Split Complementary

Split-complementary colors differ from the complementary color scheme. The scheme consists of three colors, the original color and two neighbors of the complement color.



344257



523D2F



20474C

Square

The Square scheme is like the rectangle color scheme, but the four colors are evenly spaced on the color wheel.



523D2F



314636



264554



4F3B4C

Rectangle

The Rectangle color scheme consists of four colors that form a rectangle on the color wheel.



523D2F



42432D



264554



3E4055

Sweetspot

The Sweet Spot groups the original color and five complimentary colors.



523D2F



6B635D



522F44



36302D



B5B5B5



363636

Same Dimension

The Same Dimension uses a secret algorithm to generate beautiful new colors.



523D2F



6B4A34



524E2F



292625



692A00



E85D00

Inverse Universe

The Inverse Universe completely reimagines the original color for something new.



2F4452



34556B



2F3252



252729



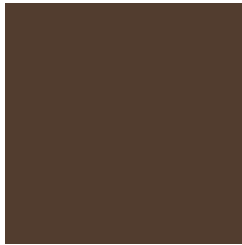
003F69



008BE8

Previews

White Background



This preview shows how the Hex color 523D2F looks on a white background.

Color Contrast Check

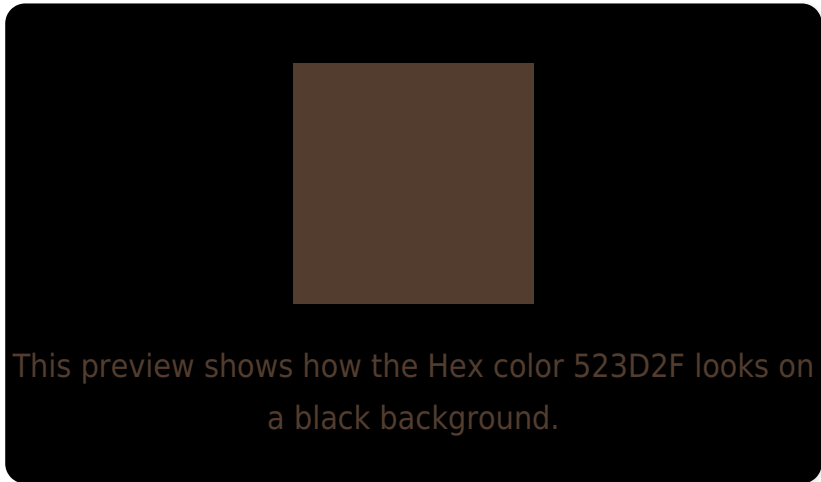
Large Text (above 18pt) WCAG AA ✓ Pass

Any Text WCAG AA ✓ Pass

Large Text (above 18pt) WCAG AAA ✓ Pass

Any Text WCAG AAA ✓ Pass

Black Background



Color Contrast Check

Large Text (above 18pt) WCAG AA × Fail

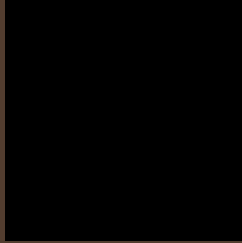
Any Text WCAG AA × Fail

Large Text (above 18pt) WCAG AAA × Fail

Any Text WCAG AAA × Fail

If you want to check with other color combinations, try the [Color Contrast Checker](#).

Hex 523D2F Background



This preview shows how black text looks on a background with the Hex color 523D2F.

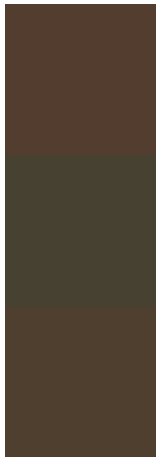


This preview shows how white text looks on a background with the Hex color 523D2F.

Color Blindness Simulation

Color vision deficiency is a very complex topic, and I could not describe the different causes any better than Wikipedia does, so if you want to learn more, you should check out their [article about color blindness](#).

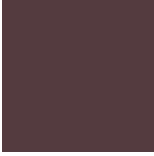
Dichromacy



Original Color
523D2F

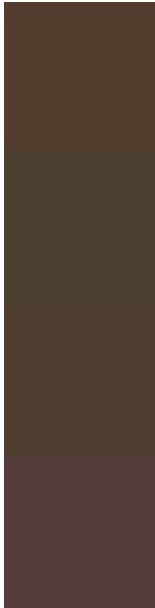
Protanopia
464131

Deuteranopia
4E3F2F



Tritanopia
543B3F

Trichromacy



Original Color
523D2F

Protanomaly
4A4030

Deuteranomaly
4F3E2F

Tritanomaly
533C39

Monochromacy



Original Color
523D2F

Achromatopsia
424242

Achromatomaly
48403B

CSS Examples

Text

The CSS property to change the color of the text to Hex 523D2F is called "color". The color property can be set on classes, ids or directly on the HTML element.

This example shows how text in the color #523D2F looks like.

```
.text, #text, p{  
    color:#523D2F  
}
```

If you want to add a text shadow in that color use the text-shadow property, you can generate a text shadow directly with our [CSS Text Shadow Generator](#).

Here you see how black text with a 4 pixel #523D2F colored shadow looks like.

```
.shadow{ text-shadow: 4px 4px 2px #523D2F
}
```

Border

The CSS property to change the border of an element to Hex 523D2F is called "border". The border property can be set on classes, ids or directly on the HTML element.

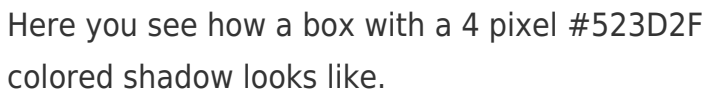
This example shows the color as border, it can be applied via the CSS property "border" or "border-color".

```
.border, #border, table{ border:4px solid
#523D2F }
```

If only the border color should be changed use the property `border-color`.

```
.border{ border-color:#523D2F }
```

If you want to add a box shadow in that color use:



Here you see how a box with a 4 pixel #523D2F colored shadow looks like.

```
.boxshadow{ -moz-box-shadow:4px 4px 4px  
4px #523D2F; -webkit-box-shadow:4px 4px  
4px 4px #523D2F; box-shadow:4px 4px 4px  
4px #523D2F }
```

Background

The CSS property to change the background color of an element to Hex 523D2F is called "background". The background property can be set on classes, ids or directly on the HTML element.

```
.background, #background, body{  
background:#523D2F }
```

If only the background color should be changed can be used:

```
.background{ background-color:#523D2F }
```

This example shows the color as background, it is applied via the CSS property "background".

To optimize and compress your CSS code, you can use our [online CSS compressor and optimizer](#) based on csstidy. If you want to create a linear or radial gradient as background or border, check our [CSS Gradient Generator](#).

Hey! You found this booklet interesting? Support Converting Colors with the new Membership Option!

The pro membership hides all ads, plus gives you double the colors in the color bucket, and more awesome pro features!

[Learn more, Memberships starting at \\$2.50/m!](#)

**Follow me
on Twitter!**

@ConvertingColor