

Converting Colors

Hex(524A46)

Have a look what the booklet for
Hex(524A46) contains.

Hex(524A46)	3
<i>Conversions</i>	4
<i>Details</i>	6
<i>Harmonies</i>	11
<i>Previews</i>	23
<i>Color Blindness Simulation</i>	26
<i>CSS Examples</i>	29

Color

Hex(524A46)

Conversions

Conversions Part 1

Format	Color
Hex	524A46
RGB	82, 74, 70
RGB Percent	32%, 29%, 27%
CMY	0.6784, 0.7098, 0.7255
CMYK	0.00, 0.10, 0.15, 0.68
HSL	20°, 8%, 30%
HSV	20°, 15%, 32%
XYZ	7.0339, 7.1336, 6.8005
YIQ	75.9360, 6.0520, 0.4520

Conversions

Conversions Part 2

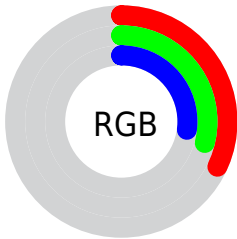
Format	Color
R_{YB}	82, 76, 70
Decimal	5392966
CIE Lab	32.11, 2.55, 3.59
CIE LCh	32, 4.410, 54.601
Yxy	7.1336, 0.3355, 0.3402
Android (android.graphics.Color)	4283583046 (0xFF524A46)
YUV	75.9360, -2.9264, 5.3181
Hunter-Lab	26.7088, 0.2688, 3.5998

Details

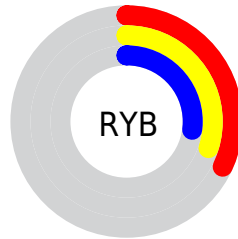
The Hex color **524A46** is a dark color, and the websafe version is hex **333333**. A complement of this color would be **464E52**, and the grayscale version is **4C4C4C**.

A 20% lighter version of the original color is **837B76**, and **251E1B** is the 20% darker color. If you saturate the color by 10%, you get **52453E**, and if you desaturate by 10%, it is **524F4E**.

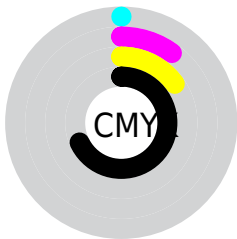
Distribution



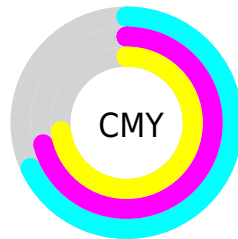
- Red (32%)
- Green (29%)
- Blue (27%)



- Red (32%)
- Yellow (30%)
- Blue (27%)



- Cyan (0%)
- Magenta (10%)
- Yellow (15%)
- Black (68%)



- Cyan (68%)
- Magenta (71%)
- Yellow (73%)

Brightness & Saturation Gradients

These gradients show how the Hex color 524A46 changes by changing the brightness by 10 percent. The first figure shows a shift by +10% for each color and the second figure -10%.

Similar to the brightness gradients but the following saturation gradients show a change of the Hex color 524A46 by changing the saturation by 10% instead.

■ 524A46

■ 524A46

FFFFFF

■ 3B3330

■ 837B76

■ 251E1B

■ 9E9490

■ 110500

■ B8AFAA

■ 000000

■ D4CAC6

■ F1E6E2

FFFFFFE

■ 524A46

■ 524A46

■ 52453E

■ 524F4E

■ 523F36

■ 525556

■ 523A2D

■ 525A5F

■ 523425

■ 526067

■ 522F1D

■ 52656F

■ 522915

■ 526B77

■ 52240D

■ 52707F

■ 521E04

■ 527688

■ 521B00

■ 527B90

Harmonies

Analogous

The Analogous color harmony consists of three colors that are next to each other on the color wheel.



534949



524A46



4F4B45

Triad

The Triadic color harmony groups three colors that are evenly spaced from another and form a triangle on the color wheel.



524A46



444E4B



4C4B52

Complementary

The Complementary color scheme is a pair of colors which are on the opposite of each other on the color wheel.



524A46



464E52

Split Complementary

Split-complementary colors differ from the complementary color scheme. The scheme consists of three colors, the original color and two neighbors of the complement color.



474C52



524A46



434E4E

Square

The Square scheme is like the rectangle color scheme, but the four colors are evenly spaced on the color wheel.



524A46



474D47



444D51



504A50

Rectangle

The Rectangle color scheme consists of four colors that form a rectangle on the color wheel.



524A46



4D4C45



444D51



4A4B52

Sweetspot

The Sweet Spot groups the original color and five complimentary colors.



524A46



6B6867



52464E



363433



B5B5B5



363636

Same Dimension

The Same Dimension uses a secret algorithm to generate beautiful new colors.



524A46



6B5E58



525046



292625



692300



E84D00

Inverse Universe

The Inverse Universe completely reimagines the original color for something new.



464E52



58656B



464852



252729



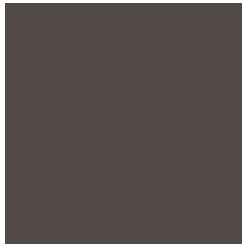
004669



009BE8

Previews

White Background



This preview shows how the Hex color 524A46 looks on a white background.

Color Contrast Check

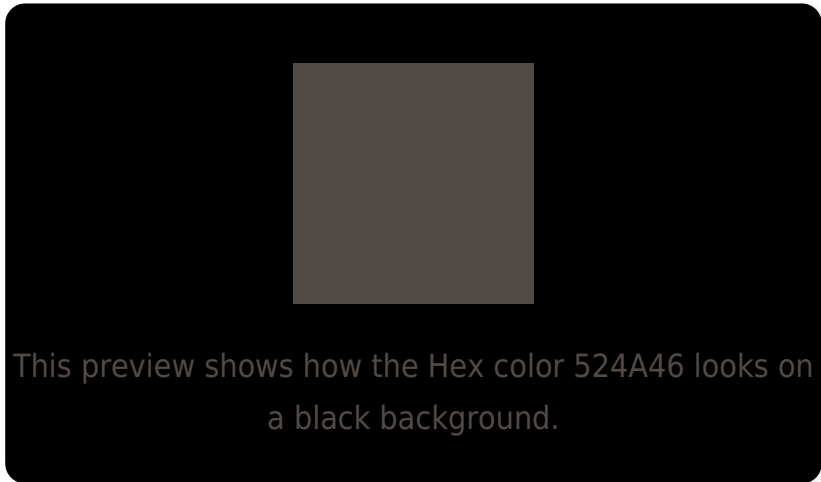
Large Text (above 18pt) WCAG AA ✓ Pass

Any Text WCAG AA ✓ Pass

Large Text (above 18pt) WCAG AAA ✓ Pass

Any Text WCAG AAA ✓ Pass

Black Background



Color Contrast Check

Large Text (above 18pt) WCAG AA × Fail

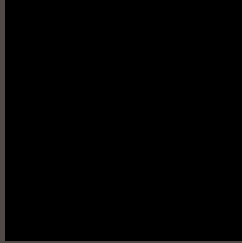
Any Text WCAG AA × Fail

Large Text (above 18pt) WCAG AAA × Fail

Any Text WCAG AAA × Fail

If you want to check with other color combinations, try the [Color Contrast Checker](#).

Hex 524A46 Background



This preview shows how black text looks on a background with the Hex color 524A46.



This preview shows how white text looks on a background with the Hex color 524A46.

Color Blindness Simulation

Color vision deficiency is a very complex topic, and I could not describe the different causes any better than Wikipedia does, so if you want to learn more, you should check out their [article about color blindness](#).

Dichromacy



Original Color
524A46

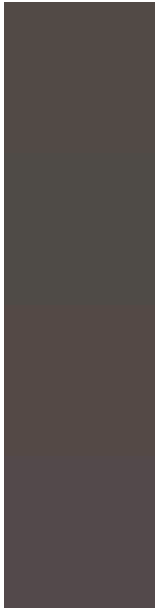
Protanopia
4E4B47

Deuteranopia
554946



Tritanopia
53494E

Trichromacy



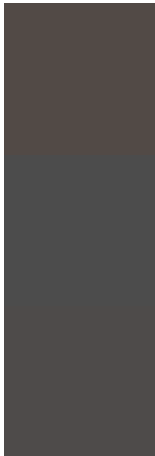
Original Color
524A46

Protanomaly
4F4B47

Deuteranomaly
544946

Tritanomaly
53494B

Monochromacy



Original Color
524A46

Achromatopsia
4C4C4C

Achromatomaly
4E4B4A

CSS Examples

Text

The CSS property to change the color of the text to Hex 524A46 is called "color". The color property can be set on classes, ids or directly on the HTML element.

This example shows how text in the color #524A46 looks like.

```
.text, #text, p{  
    color:#524A46  
}
```

If you want to add a text shadow in that color use the text-shadow property, you can generate a text shadow directly with our [CSS Text Shadow Generator](#).

Here you see how black text with a 4 pixel #524A46 colored shadow looks like.

```
.shadow{ text-shadow: 4px 4px 2px #524A46
}
```

Border

The CSS property to change the border of an element to Hex 524A46 is called "border". The border property can be set on classes, ids or directly on the HTML element.

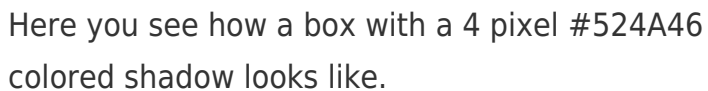
This example shows the color as border, it can be applied via the CSS property "border" or "border-color".

```
.border, #border, table{ border:4px solid
#524A46 }
```

If only the border color should be changed use the property `border-color`.

```
.border{ border-color:#524A46 }
```

If you want to add a box shadow in that color use:



Here you see how a box with a 4 pixel #524A46 colored shadow looks like.

```
.boxshadow{ -moz-box-shadow:4px 4px 4px  
4px #524A46; -webkit-box-shadow:4px 4px  
4px 4px #524A46; box-shadow:4px 4px 4px  
4px #524A46 }
```

Background

The CSS property to change the background color of an element to Hex 524A46 is called "background". The background property can be set on classes, ids or directly on the HTML element.

```
.background, #background, body{  
background:#524A46 }
```

If only the background color should be changed can be used:

```
.background{ background-color:#524A46 }
```

This example shows the color as background, it is applied via the CSS property "background".

To optimize and compress your CSS code, you can use our [online CSS compressor and optimizer](#) based on csstidy. If you want to create a linear or radial gradient as background or border, check our [CSS Gradient Generator](#).

Hey! You found this booklet interesting? Support Converting Colors with the new Membership Option!

The pro membership hides all ads, plus gives you double the colors in the color bucket, and more awesome pro features!

[Learn more, Memberships starting at \\$2.50/m!](#)

**Follow me
on Twitter!**

@ConvertingColor