

Converting Colors

Hex(532D2B)

Have a look what the booklet for
Hex(532D2B) contains.

Hex(532D2B)	3
<i>Conversions</i>	4
<i>Details</i>	6
<i>Harmonies</i>	11
<i>Previews</i>	23
<i>Color Blindness Simulation</i>	26
<i>CSS Examples</i>	29

Color

Hex(532D2B)

Conversions

Conversions Part 1

Format	Color
Hex	532D2B
RGB	83, 45, 43
RGB Percent	33%, 18%, 17%
CMY	0.6745, 0.8235, 0.8314
CMYK	0.00, 0.46, 0.48, 0.67
HSL	3°, 32%, 25%
HSV	3°, 48%, 33%
XYZ	4.9417, 3.8902, 2.7759
YIQ	56.1340, 23.2900, 7.4340

Conversions

Conversions Part 2

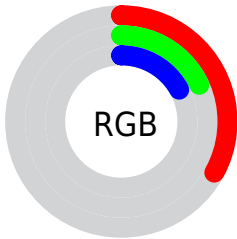
Format	Color
RYB	83, 45, 43
Decimal	5451051
CIELab	23.31, 17.20, 8.90
CIELCh	23, 19.366, 27.372
Yxy	3.8902, 0.4257, 0.3351
Android (android.graphics.Color)	4283641131 (0xFF532D2B)
YUV	56.1340, -6.4751, 23.5615
Hunter-Lab	19.7236, 10.2067, 5.4619

Details

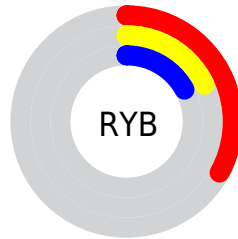
The Hex color **532D2B** is a dark color, and the websafe version is hex **663333**. A complement of this color would be **2B5153**, and the grayscale version is **383838**.

A 20% lighter version of the original color is **865B58**, and **260000** is the 20% darker color. If you saturate the color by 10%, you get **532523**, and if you desaturate by 10%, it is **533533**.

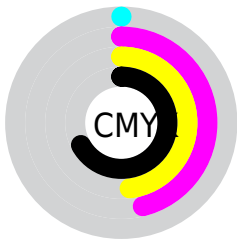
Distribution



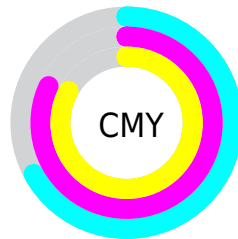
- Red (33%)
- Green (18%)
- Blue (17%)



- Red (33%)
- Yellow (18%)
- Blue (17%)



- Cyan (0%)
- Magenta (46%)
- Yellow (48%)
- Black (67%)



- Cyan (67%)
- Magenta (82%)
- Yellow (83%)

Brightness & Saturation Gradients

These gradients show how the Hex color 532D2B changes by changing the brightness by 10 percent. The first figure shows a shift by +10% for each color and the second figure -10%.

Similar to the brightness gradients but the following saturation gradients show a change of the Hex color 532D2B by changing the saturation by 10% instead.

■ 532D2B

■ 532D2B

FFFFFF

■ 3B1817

■ 865B58

■ 260000

■ A17471

■ 000000

■ BD8E8A

■ D9A8A4

■ F6C4C0

■ FFE0DB

■ FFFDF8

■ 532D2B

■ 532D2B

■ 532523

■ 533533

■ 531D1A

■ 533D3C

■ 531512

■ 534544

■ 530D0A

■ 534D4C

■ 530602

■ 535454

■ 530400

■ 535C5D

■ 536465

■ 536C6D

■ 537476

Harmonies

Analogous

The Analogous color harmony consists of three colors that are next to each other on the color wheel.



522C39



532D2B



4D3120

Triad

The Triadic color harmony groups three colors that are evenly spaced from another and form a triangle on the color wheel.



532D2B



223E27



1E3954

Complementary

The Complementary color scheme is a pair of colors which are on the opposite of each other on the color wheel.



532D2B



2B5153

Split Complementary

Split-complementary colors differ from the complementary color scheme. The scheme consists of three colors, the original color and two neighbors of the complement color.



003D50



532D2B



0A3F36

Square

The Square scheme is like the rectangle color scheme, but the four colors are evenly spaced on the color wheel.



532D2B



333B1D



003F44



373451

Rectangle

The Rectangle color scheme consists of four colors that form a rectangle on the color wheel.



532D2B



46351B



003F44



143B54

Sweetspot

The Sweet Spot groups the original color and five complimentary colors.



532D2B



6B5D5C



532B51



362D2C



B5B5B5



363636

Same Dimension

The Same Dimension uses a secret algorithm to generate beautiful new colors.



532D2B



6B302D



53412B



292525



690500



E80C00

Inverse Universe

The Inverse Universe completely reimagines the original color for something new.



2B5153



2D686B



2B3D53



252929



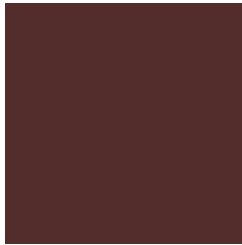
006369



00DCE8

Previews

White Background



This preview shows how the Hex color 532D2B looks on a white background.

Color Contrast Check

Large Text (above 18pt) WCAG AA ✓ Pass

Any Text WCAG AA ✓ Pass

Large Text (above 18pt) WCAG AAA ✓ Pass

Any Text WCAG AAA ✓ Pass

Black Background



Color Contrast Check

Large Text (above 18pt) WCAG AA × Fail

Any Text WCAG AA × Fail

Large Text (above 18pt) WCAG AAA × Fail

Any Text WCAG AAA × Fail

If you want to check with other color combinations, try the [Color Contrast Checker](#).

Hex 532D2B Background



This preview shows how black text looks on a background with the Hex color 532D2B.

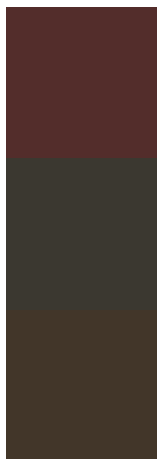


This preview shows how white text looks on a background with the Hex color 532D2B.

Color Blindness Simulation

Color vision deficiency is a very complex topic, and I could not describe the different causes any better than Wikipedia does, so if you want to learn more, you should check out their [article about color blindness](#).

Dichromacy



Original Color
532D2B

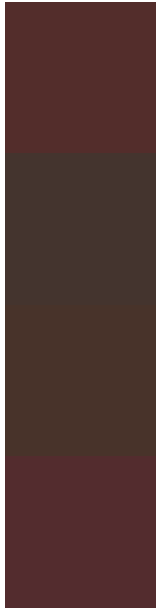
Protanopia
3B3830

Deuteranopia
423629



Tritanopia
532C30

Trichromacy



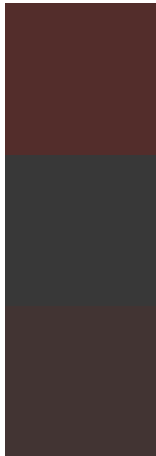
Original Color
532D2B

Protanomaly
44342E

Deuteranomaly
48332A

Tritanomaly
532C2E

Monochromacy



Original Color
532D2B

Achromatopsia
383838

Achromatomaly
423433

CSS Examples

Text

The CSS property to change the color of the text to Hex 532D2B is called "color". The color property can be set on classes, ids or directly on the HTML element.

This example shows how text in the color #532D2B looks like.

```
.text, #text, p{  
    color:#532D2B  
}
```

If you want to add a text shadow in that color use the text-shadow property, you can generate a text shadow directly with our [CSS Text Shadow Generator](#).

Here you see how black text with a 4 pixel #532D2B colored shadow looks like.

```
.shadow{ text-shadow: 4px 4px 2px #532D2B }  
}
```

Border

The CSS property to change the border of an element to Hex 532D2B is called "border". The border property can be set on classes, ids or directly on the HTML element.

This example shows the color as border, it can be applied via the CSS property "border" or "border-color".

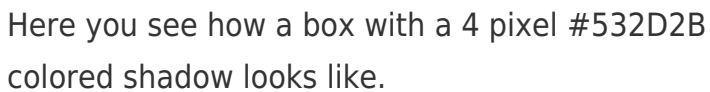
```
.border, #border, table{ border:4px solid #532D2B }  
}
```

If only the border color should be changed use the property `border-color`.

```
.border{ border-color:#532D2B }
```

If you want to add a box shadow in that color use:

Here you see how a box with a 4 pixel #532D2B colored shadow looks like.

A rectangular box with a dark red border and a dark red shadow. The box is white with a thin dark red border. Below and to the right of the box is a dark red shadow, creating a 3D effect. The shadow is rectangular and matches the color of the border.

```
.boxshadow{ -moz-box-shadow:4px 4px 4px  
4px #532D2B; -webkit-box-shadow:4px 4px  
4px 4px #532D2B; box-shadow:4px 4px 4px  
4px #532D2B }
```

Background

The CSS property to change the background color of an element to Hex 532D2B is called "background". The background property can be set on classes, ids or directly on the HTML element.

```
.background, #background, body{  
background:#532D2B }
```

If only the background color should be changed can be used:

```
.background{ background-color:#532D2B }
```

This example shows the color as background, it is applied via the CSS property "background".

To optimize and compress your CSS code, you can use our [online CSS compressor and optimizer](#) based on csstidy. If you want to create a linear or radial gradient as background or border, check our [CSS Gradient Generator](#).

Hey! You found this booklet interesting? Support Converting Colors with the new Membership Option!

The pro membership hides all ads, plus gives you double the colors in the color bucket, and more awesome pro features!

[Learn more, Memberships starting at \\$2.50/m!](#)

**Follow me
on Twitter!**

@ConvertingColor