

# Converting Colors

Hex(532E34)

Have a look what the booklet for  
Hex(532E34) contains.

<b>Hex(532E34)</b> .....	3
<i><b>Conversions</b></i> .....	4
<i><b>Details</b></i> .....	6
<i><b>Harmonies</b></i> .....	11
<i><b>Previews</b></i> .....	23
<i><b>Color Blindness Simulation</b></i> .....	26
<i><b>CSS Examples</b></i> .....	29

**Color**

**Hex(532E34)**

# Conversions

## Conversions Part 1

<b>Format</b>	<b>Color</b>
Hex	532E34
RGB	83, 46, 52
RGB Percent	33%, 18%, 20%
CMY	0.6745, 0.8196, 0.7961
CMYK	0.00, 0.45, 0.37, 0.67
HSL	350°, 29%, 25%
HSV	350°, 45%, 33%
XYZ	5.1641, 4.0409, 3.7566
YIQ	57.7470, 20.1260, 9.7100

# Conversions

## Conversions Part 2

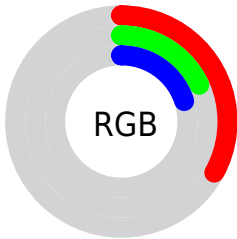
<b>Format</b>	<b>Color</b>
<b>R<sub>YB</sub></b>	83, 46, 52
Decimal	5451316
CIE <sub>Lab</sub>	23.81, 17.80, 3.52
CIE <sub>LCh</sub>	24, 18.141, 11.196
Yxy	4.0409, 0.3984, 0.3118
Android (android.graphics.Color)	4283641396 (0xFF532E34)
YUV	57.7470, -2.8333, 22.1469
Hunter-Lab	20.1020, 10.6771, 2.9915

# Details

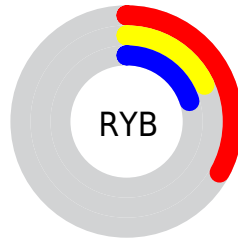
The Hex color **532E34** is a dark color, and the websafe version is hex **663333**. A complement of this color would be **2E534D**, and the grayscale version is **3A3A3A**.

A 20% lighter version of the original color is **865D62**, and **260006** is the 20% darker color. If you saturate the color by 10%, you get **53262D**, and if you desaturate by 10%, it is **53363B**.

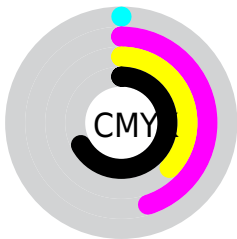
# Distribution



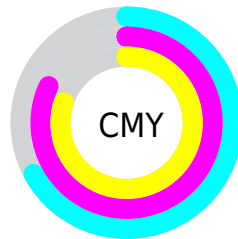
- Red (33%)
- Green (18%)
- Blue (20%)



- Red (33%)
- Yellow (18%)
- Blue (20%)



- Cyan (0%)
- Magenta (45%)
- Yellow (37%)
- Black (67%)



- Cyan (67%)
- Magenta (82%)
- Yellow (80%)

# Brightness & Saturation Gradients

These gradients show how the Hex color 532E34 changes by changing the brightness by 10 percent. The first figure shows a shift by +10% for each color and the second figure -10%.

Similar to the brightness gradients but the following saturation gradients show a change of the Hex color 532E34 by changing the saturation by 10% instead.



 532E34

 532E34

FFFFFF

 3B181F

 865D62

 260006

 A1757B

 000000

 BC8F95

 D8AAB0

 F5C5CB

 FFE1E7

 FFFEFF

 532E34

 532E34

■ 53262D

■ 53363B

■ 531D26

■ 533F42

■ 53151F

■ 534749

■ 530D18

■ 534F50

■ 530411

■ 535757

■ 53000D

■ 53605E

■ 536865

■ 53706C

■ 537973

# Harmonies

## Analogous

The Analogous color harmony consists of three colors that are next to each other on the color wheel.



4E2F42



532E34



513027

# Triad

The Triadic color harmony groups three colors that are evenly spaced from another and form a triangle on the color wheel.



532E34



2E3D24



143C52

# Complementary

The Complementary color scheme is a pair of colors which are on the opposite of each other on the color wheel.



532E34



2E534D

# Split Complementary

Split-complementary colors differ from the complementary color scheme. The scheme consists of three colors, the original color and two neighbors of the complement color.



003F4A



532E34



1C3F2F

# Square

The Square scheme is like the rectangle color scheme, but the four colors are evenly spaced on the color wheel.



532E34



3D391E



07403D



2D3853

# Rectangle

The Rectangle color scheme consists of four colors that form a rectangle on the color wheel.



532E34



4C3321



07403D



0B3D50



# Sweetspot

The Sweet Spot groups the original color and five complimentary colors.



532E34



6B5D5F



4D2E53



362D2E



B5B5B5



363636



# Same Dimension

The Same Dimension uses a secret algorithm to generate beautiful new colors.



532E34



6B323C



533A2E



292525



690011



E80026



# Inverse Universe

The Inverse Universe completely reimagines the original color for something new.



532E34



6B323C



2E4753



292525



690011

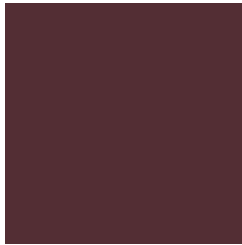


E80026



# Previews

## White Background



This preview shows how the Hex color 532E34 looks on a white background.

## Color Contrast Check

Large Text (above 18pt) WCAG AA ✓ Pass

Any Text WCAG AA ✓ Pass

Large Text (above 18pt) WCAG AAA ✓ Pass

Any Text WCAG AAA ✓ Pass

# Black Background



## Color Contrast Check

Large Text (above 18pt) WCAG AA × Fail

Any Text WCAG AA × Fail

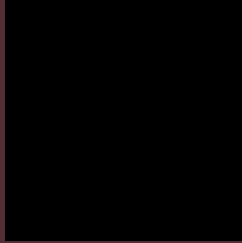
Large Text (above 18pt) WCAG AAA × Fail

Any Text WCAG AAA × Fail

If you want to check with other color combinations, try the [Color Contrast Checker](#).



## Hex 532E34 Background



This preview shows how black text looks on a background with the Hex color 532E34.



This preview shows how white text looks on a background with the Hex color 532E34.

# Color Blindness Simulation

Color vision deficiency is a very complex topic, and I could not describe the different causes any better than Wikipedia does, so if you want to learn more, you should check out their [article about color blindness](#).

## Dichromacy



**Original Color**  
532E34

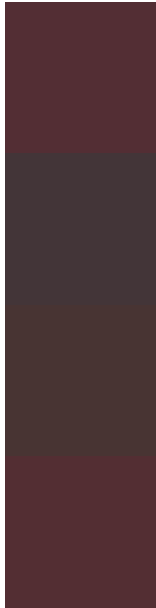
**Protanopia**  
3A393A

**Deuteranopia**  
413732



**Tritanopia**  
532E32

# Trichromacy



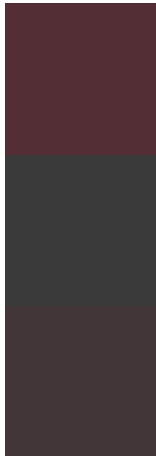
**Original Color**  
532E34

**Protanomaly**  
433538

**Deuteranomaly**  
483433

**Tritanomaly**  
532E33

# Monochromacy



**Original Color**  
532E34

**Achromatopsia**  
3A3A3A

**Achromatomaly**  
433638

# CSS Examples

## Text

The CSS property to change the color of the text to Hex 532E34 is called "color". The color property can be set on classes, ids or directly on the HTML element.

This example shows how text in the color #532E34 looks like.

```
.text, #text, p{  
    color:#532E34  
}
```

If you want to add a text shadow in that color use the text-shadow property, you can generate a text shadow directly with our [CSS Text Shadow Generator](#).

Here you see how black text with a 4 pixel #532E34 colored shadow looks like.

```
.shadow{ text-shadow: 4px 4px 2px #532E34
}
```

## Border

The CSS property to change the border of an element to Hex 532E34 is called "border". The border property can be set on classes, ids or directly on the HTML element.

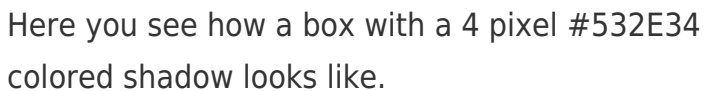
This example shows the color as border, it can be applied via the CSS property "border" or "border-color".

```
.border, #border, table{ border:4px solid
#532E34 }
```

If only the border color should be changed use the property `border-color`.

```
.border{ border-color:#532E34 }
```

If you want to add a box shadow in that color use:



Here you see how a box with a 4 pixel #532E34 colored shadow looks like.

```
.boxshadow{ -moz-box-shadow:4px 4px 4px  
4px #532E34; -webkit-box-shadow:4px 4px  
4px 4px #532E34; box-shadow:4px 4px 4px  
4px #532E34 }
```

# Background

The CSS property to change the background color of an element to Hex 532E34 is called "background". The background property can be set on classes, ids or directly on the HTML element.

```
.background, #background, body{  
background:#532E34 }
```

If only the background color should be changed can be used:

```
.background{ background-color:#532E34 }
```

This example shows the color as background, it is applied via the CSS property "background".

To optimize and compress your CSS code, you can use our [online CSS compressor and optimizer](#) based on csstidy. If you want to create a linear or radial gradient as background or border, check our [CSS Gradient Generator](#).



Hey! You found this booklet interesting? Support Converting Colors with the new Membership Option!

The pro membership hides all ads, plus gives you double the colors in the color bucket, and more awesome pro features!

**[Learn more, Memberships starting at \\$2.50/m!](#)**

**Follow me  
on Twitter!**

@ConvertingColor