

# Converting Colors

Hex(533A42)

Have a look what the booklet for  
Hex(533A42) contains.

<b>Hex(533A42)</b> .....	3
<b><i>Conversions</i></b> .....	4
<b><i>Details</i></b> .....	6
<b><i>Harmonies</i></b> .....	11
<b><i>Previews</i></b> .....	23
<b><i>Color Blindness Simulation</i></b> .....	26
<b><i>CSS Examples</i></b> .....	29

**Color**

**Hex(533A42)**

# Conversions

## Conversions Part 1

Format	Color
Hex	533A42
RGB	83, 58, 66
RGB Percent	33%, 23%, 26%
CMY	0.6745, 0.7725, 0.7412
CMYK	0.00, 0.30, 0.20, 0.67
HSL	341°, 18%, 28%
HSV	341°, 30%, 33%
XYZ	6.0637, 5.2585, 5.8496
YIQ	66.3870, 12.3320, 7.7880

# Conversions

## Conversions Part 2

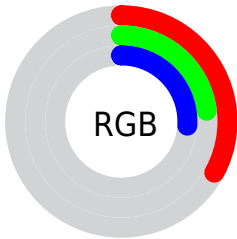
<b>Format</b>	<b>Color</b>
<b>R<sub>YB</sub></b>	83, 58, 66
Decimal	5454402
CIE <sub>Lab</sub>	27.46, 12.47, -0.54
CIE <sub>LCh</sub>	27, 12.477, 357.532
Yxy	5.2585, 0.3531, 0.3062
Android (android.graphics.Color)	4283644482 (0xFF533A42)
YUV	66.3870, -0.1908, 14.5696
Hunter-Lab	22.9313, 7.0707, 0.9274

# Details

The Hex color **533A42** is a dark color, and the websafe version is hex **333333**. A complement of this color would be **3A534B**, and the grayscale version is **424242**.

A 20% lighter version of the original color is **856972**, and **251017** is the 20% darker color. If you saturate the color by 10%, you get **53323C**, and if you desaturate by 10%, it is **534248**.

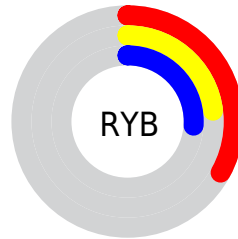
# Distribution



Red (33%)

Green (23%)

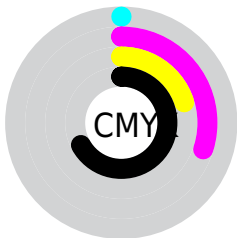
Blue (26%)



Red (33%)

Yellow (23%)

Blue (26%)

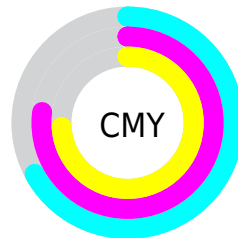


Cyan (0%)

Magenta (30%)

Yellow (20%)

Black (67%)



Cyan (67%)

Magenta (77%)

Yellow (74%)

# Brightness & Saturation Gradients

These gradients show how the Hex color 533A42 changes by changing the brightness by 10 percent. The first figure shows a shift by +10% for each color and the second figure -10%.

Similar to the brightness gradients but the following saturation gradients show a change of the Hex color 533A42 by changing the saturation by 10% instead.



■ 533A42

■ 533A42

FFFFFF

■ 3C242C

■ 856972

■ 251017

■ 9F838B

■ 040000

■ BA9DA6

■ 000000

■ D6B8C1

■ F3D3DD

■ FFF0F9

■ 533A42

■ 533A42

■ 53323C

■ 534248

■ 532937

■ 534B4D

■ 532131

■ 535353

■ 53192B

■ 535B59

■ 531126

■ 53635E

■ 530820

■ 536C64

■ 53001B

■ 53746A

■ 537C6F

■ 538575

# Harmonies

## Analogous

The Analogous color harmony consists of three colors that are next to each other on the color wheel.



4C3C4B



533A42



543A38

# Triad

The Triadic color harmony groups three colors that are evenly spaced from another and form a triangle on the color wheel.



533A42



3F4330



294551

# Complementary

The Complementary color scheme is a pair of colors which are on the opposite of each other on the color wheel.



533A42



3A534B

# Split Complementary

Split-complementary colors differ from the complementary color scheme. The scheme consists of three colors, the original color and two neighbors of the complement color.



254649



533A42



344536

# Square

The Square scheme is like the rectangle color scheme, but the four colors are evenly spaced on the color wheel.



533A42



49402E



2A4640



344254

# Rectangle

The Rectangle color scheme consists of four colors that form a rectangle on the color wheel.



533A42



523C33



2A4640



27454F



# Sweetspot

The Sweet Spot groups the original color and five complimentary colors.



533A42



6B6165



4B3A53



363032



B5B5B5



363636



# Same Dimension

The Same Dimension uses a secret algorithm to generate beautiful new colors.



533A42



6B4551



533E3A



292526



690021



E8004A



# Inverse Universe

The Inverse Universe completely reimagines the original color for something new.



533A42



6B4551



3A4F53



292526



690021



E8004A



# Previews

## White Background



This preview shows how the Hex color 533A42 looks on a white background.

## Color Contrast Check

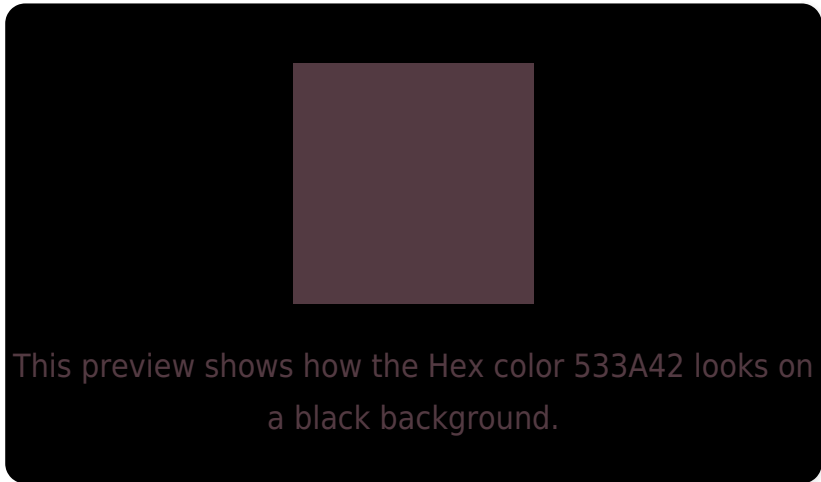
Large Text (above 18pt) WCAG AA ✓ Pass

Any Text WCAG AA ✓ Pass

Large Text (above 18pt) WCAG AAA ✓ Pass

Any Text WCAG AAA ✓ Pass

# Black Background



## Color Contrast Check

Large Text (above 18pt) WCAG AA × Fail

Any Text WCAG AA × Fail

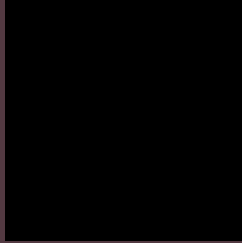
Large Text (above 18pt) WCAG AAA × Fail

Any Text WCAG AAA × Fail

If you want to check with other color combinations, try the [Color Contrast Checker](#).



## Hex 533A42 Background



This preview shows how black text looks on a background with the Hex color 533A42.



This preview shows how white text looks on a background with the Hex color 533A42.

# Color Blindness Simulation

Color vision deficiency is a very complex topic, and I could not describe the different causes any better than Wikipedia does, so if you want to learn more, you should check out their [article about color blindness](#).

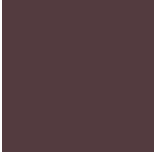
## Dichromacy



**Original Color**  
533A42

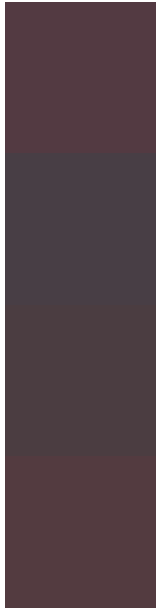
**Protanopia**  
414146

**Deuteranopia**  
473F41



**Tritanopia**  
533B3F

# Trichromacy



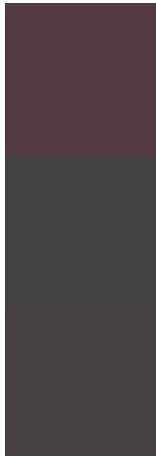
**Original Color**  
533A42

**Protanomaly**  
483E45

**Deuteranomaly**  
4B3D41

**Tritanomaly**  
533B40

# Monochromacy



**Original Color**  
533A42

**Achromatopsia**  
424242

**Achromatomaly**  
483F42

# CSS Examples

## Text

The CSS property to change the color of the text to Hex 533A42 is called "color". The color property can be set on classes, ids or directly on the HTML element.

This example shows how text in the color #533A42 looks like.

```
.text, #text, p{  
    color:#533A42  
}
```

If you want to add a text shadow in that color use the text-shadow property, you can generate a text shadow directly with our [CSS Text Shadow Generator](#).

Here you see how black text with a 4 pixel #533A42 colored shadow looks like.

```
.shadow{ text-shadow: 4px 4px 2px #533A42
}
```

## Border

The CSS property to change the border of an element to Hex 533A42 is called "border". The border property can be set on classes, ids or directly on the HTML element.

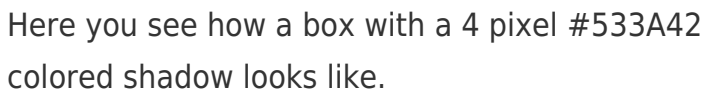
This example shows the color as border, it can be applied via the CSS property "border" or "border-color".

```
.border, #border, table{ border:4px solid
#533A42 }
```

If only the border color should be changed use the property `border-color`.

```
.border{ border-color:#533A42 }
```

If you want to add a box shadow in that color use:



Here you see how a box with a 4 pixel #533A42 colored shadow looks like.

```
.boxshadow{ -moz-box-shadow:4px 4px 4px  
4px #533A42; -webkit-box-shadow:4px 4px  
4px 4px #533A42; box-shadow:4px 4px 4px  
4px #533A42 }
```

# Background

The CSS property to change the background color of an element to Hex 533A42 is called "background". The background property can be set on classes, ids or directly on the HTML element.

```
.background, #background, body{  
background:#533A42 }
```

If only the background color should be changed can be used:

```
.background{ background-color:#533A42 }
```

This example shows the color as background, it is applied via the CSS property "background".

To optimize and compress your CSS code, you can use our [online CSS compressor and optimizer](#) based on csstidy. If you want to create a linear or radial gradient as background or border, check our [CSS Gradient Generator](#).



Hey! You found this booklet interesting? Support Converting Colors with the new Membership Option!

The pro membership hides all ads, plus gives you double the colors in the color bucket, and more awesome pro features!

**[Learn more, Memberships starting at \\$2.50/m!](#)**

**Follow me  
on Twitter!**

@ConvertingColor