

Converting Colors

Hex(533B43)

Have a look what the booklet for
Hex(533B43) contains.

Hex(533B43)	3
<i>Conversions</i>	4
<i>Details</i>	6
<i>Harmonies</i>	11
<i>Previews</i>	23
<i>Color Blindness Simulation</i>	26
<i>CSS Examples</i>	29

Color

Hex(533B43)

Conversions

Conversions Part 1

Format	Color
Hex	533B43
RGB	83, 59, 67
RGB Percent	33%, 23%, 26%
CMY	0.6745, 0.7686, 0.7373
CMYK	0.00, 0.29, 0.19, 0.67
HSL	340°, 17%, 28%
HSV	340°, 29%, 33%
XYZ	6.1444, 5.3722, 6.0233
YIQ	67.0880, 11.7360, 7.5760

Conversions

Conversions Part 2

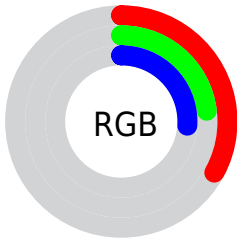
Format	Color
R_{YB}	83, 59, 67
Decimal	5454659
CIE _{Lab}	27.77, 12.01, -0.74
CIE _{LCh}	28, 12.030, 356.471
Yxy	5.3722, 0.3503, 0.3063
Android (android.graphics.Color)	4283644739 (0xFF533B43)
YUV	67.0880, -0.0434, 13.9548
Hunter-Lab	23.1780, 6.7581, 0.8168

Details

The Hex color **533B43** is a dark color, and the websafe version is hex **333333**. A complement of this color would be **3B534B**, and the grayscale version is **434343**.

A 20% lighter version of the original color is **856A73**, and **251118** is the 20% darker color. If you saturate the color by 10%, you get **53333D**, and if you desaturate by 10%, it is **534349**.

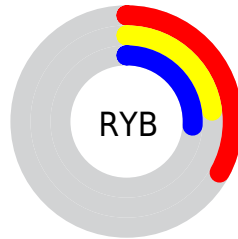
Distribution



Red (33%)

Green (23%)

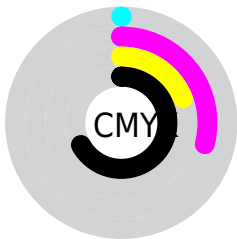
Blue (26%)



Red (33%)

Yellow (23%)

Blue (26%)

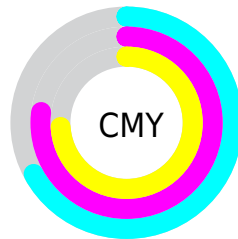


Cyan (0%)

Magenta (29%)

Yellow (19%)

Black (67%)



Cyan (67%)

Magenta (77%)

Yellow (74%)

Brightness & Saturation Gradients

These gradients show how the Hex color 533B43 changes by changing the brightness by 10 percent. The first figure shows a shift by +10% for each color and the second figure -10%.

Similar to the brightness gradients but the following saturation gradients show a change of the Hex color 533B43 by changing the saturation by 10% instead.

■ 533B43

■ 533B43

FFFFFF

■ 3C252D

■ 856A73

■ 251118

■ 9F848C

■ 060000

■ BA9EA7

■ 000000

■ D6B9C2

■ F3D4DE

■ FFF1FA

■ 533B43

■ 533B43

■ 53333D

■ 534349

■ 532A38

■ 534C4E

■ 532232

■ 535454

■ 531A2D

■ 535C59

■ 531227

■ 53645F

■ 530922

■ 536D64

■ 53011C

■ 53756A

■ 53001C

■ 537D6F

■ 538675

Harmonies

Analogous

The Analogous color harmony consists of three colors that are next to each other on the color wheel.



4C3D4C



533B43



543B3A

Triad

The Triadic color harmony groups three colors that are evenly spaced from another and form a triangle on the color wheel.



533B43



404331



2A4551

Complementary

The Complementary color scheme is a pair of colors which are on the opposite of each other on the color wheel.



533B43



3B534B

Split Complementary

Split-complementary colors differ from the complementary color scheme. The scheme consists of three colors, the original color and two neighbors of the complement color.



274749



533B43



354637

Square

The Square scheme is like the rectangle color scheme, but the four colors are evenly spaced on the color wheel.



533B43



49412F



2C4740



354354

Rectangle

The Rectangle color scheme consists of four colors that form a rectangle on the color wheel.



533B43



533D35



2C4740



28464F

Sweetspot

The Sweet Spot groups the original color and five complimentary colors.



533B43



6B6165



4B3B53



363032



B5B5B5



363636

Same Dimension

The Same Dimension uses a secret algorithm to generate beautiful new colors.



533B43



6B4652



533F3B



292526



690023



E8004D

Inverse Universe

The Inverse Universe completely reimagines the original color for something new.



533B43



6B4652



3B4F53



292526



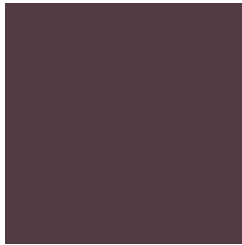
690023



E8004D

Previews

White Background



This preview shows how the Hex color 533B43 looks on a white background.

Color Contrast Check

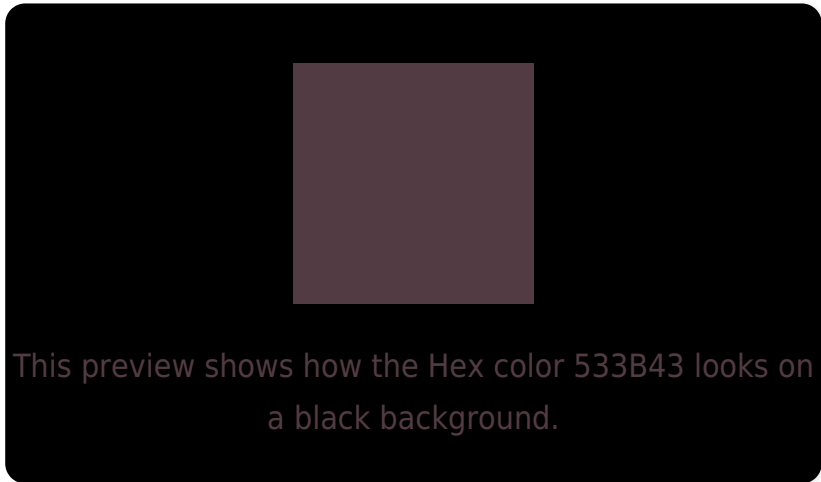
Large Text (above 18pt) WCAG AA ✓ Pass

Any Text WCAG AA ✓ Pass

Large Text (above 18pt) WCAG AAA ✓ Pass

Any Text WCAG AAA ✓ Pass

Black Background



Color Contrast Check

Large Text (above 18pt) WCAG AA × Fail

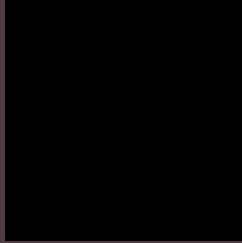
Any Text WCAG AA × Fail

Large Text (above 18pt) WCAG AAA × Fail

Any Text WCAG AAA × Fail

If you want to check with other color combinations, try the [Color Contrast Checker](#).

Hex 533B43 Background



This preview shows how black text looks on a background with the Hex color 533B43.



This preview shows how white text looks on a background with the Hex color 533B43.

Color Blindness Simulation

Color vision deficiency is a very complex topic, and I could not describe the different causes any better than Wikipedia does, so if you want to learn more, you should check out their [article about color blindness](#).


Dichromacy



Original Color
533B43

Protanopia
414147

Deuteranopia
484042



Tritanopia
533B40

Trichromacy



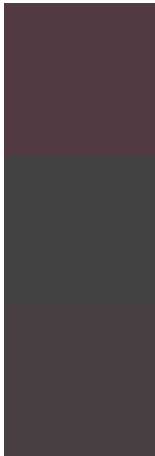
Original Color
533B43

Protanomaly
483F46

Deuteranomaly
4C3E42

Tritanomaly
533B41

Monochromacy



Original Color
533B43

Achromatopsia
434343

Achromatomaly
494043

CSS Examples

Text

The CSS property to change the color of the text to Hex 533B43 is called "color". The color property can be set on classes, ids or directly on the HTML element.

This example shows how text in the color #533B43 looks like.

```
.text, #text, p{  
    color:#533B43  
}
```

If you want to add a text shadow in that color use the text-shadow property, you can generate a text shadow directly with our [CSS Text Shadow Generator](#).

Here you see how black text with a 4 pixel #533B43 colored shadow looks like.

```
.shadow{ text-shadow: 4px 4px 2px #533B43
}
```

Border

The CSS property to change the border of an element to Hex 533B43 is called "border". The border property can be set on classes, ids or directly on the HTML element.

This example shows the color as border, it can be applied via the CSS property "border" or "border-color".

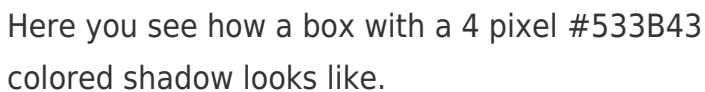
```
.border, #border, table{ border:4px solid
#533B43 }
```

If only the border color should be changed use the property `border-color`.

```
.border{ border-color:#533B43 }
```

If you want to add a box shadow in that color use:

Here you see how a box with a 4 pixel #533B43 colored shadow looks like.

A rectangular box with a dark blue border and a dark blue shadow. The box is white with a thin dark blue border. Below the box, there is a thick dark blue horizontal bar. The shadow is a dark blue rectangular area that is slightly offset from the bottom and right edges of the box.

```
.boxshadow{ -moz-box-shadow:4px 4px 4px  
4px #533B43; -webkit-box-shadow:4px 4px  
4px 4px #533B43; box-shadow:4px 4px 4px  
4px #533B43 }
```

Background

The CSS property to change the background color of an element to Hex 533B43 is called "background". The background property can be set on classes, ids or directly on the HTML element.

```
.background, #background, body{  
background:#533B43 }
```

If only the background color should be changed can be used:

```
.background{ background-color:#533B43 }
```

This example shows the color as background, it is applied via the CSS property "background".

To optimize and compress your CSS code, you can use our [online CSS compressor and optimizer](#) based on csstidy. If you want to create a linear or radial gradient as background or border, check our [CSS Gradient Generator](#).

Hey! You found this booklet interesting? Support Converting Colors with the new Membership Option!

The pro membership hides all ads, plus gives you double the colors in the color bucket, and more awesome pro features!

[Learn more, Memberships starting at \\$2.50/m!](#)

**Follow me
on Twitter!**

@ConvertingColor