

Converting Colors

Hex(533F13)

Have a look what the booklet for
Hex(533F13) contains.

Hex(533F13)	3
<i>Conversions</i>	4
<i>Details</i>	6
<i>Harmonies</i>	11
<i>Previews</i>	23
<i>Color Blindness Simulation</i>	26
<i>CSS Examples</i>	29

Color

Hex(533F13)

Conversions

Conversions Part 1

Format	Color
Hex	533F13
RGB	83, 63, 19
RGB Percent	33%, 25%, 7%
CMY	0.6745, 0.7529, 0.9255
CMYK	0.00, 0.24, 0.77, 0.67
HSL	41°, 63%, 20%
HSV	41°, 77%, 33%
XYZ	5.4623, 5.4410, 1.3784
YIQ	63.9640, 26.0440, -9.4440

Conversions

Conversions Part 2

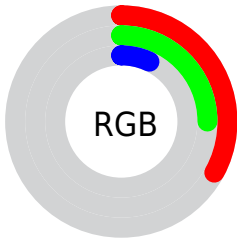
Format	Color
R_YB	48, 83, 19
Decimal	5455635
CIE Lab	27.96, 3.49, 29.17
CIE LCh	28, 29.381, 83.185
Yxy	5.4410, 0.4448, 0.4430
Android (android.graphics.Color)	4283645715 (0xFF533F13)
YUV	63.9640, -22.1673, 16.6946
Hunter-Lab	23.3260, 0.9794, 12.8245

Details

The Hex color **533F13** is a dark color, and the websafe version is hex **333300**. A complement of this color would be **132753**, and the grayscale version is **404040**.

A 20% lighter version of the original color is **876E40**, and **231500** is the 20% darker color. If you saturate the color by 10%, you get **533C0B**, and if you desaturate by 10%, it is **53421B**.

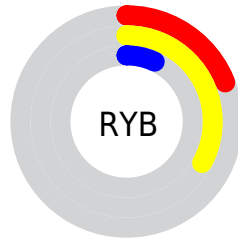
Distribution



Red (33%)

Green (25%)

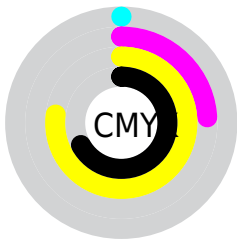
Blue (7%)



Red (19%)

Yellow (33%)

Blue (7%)

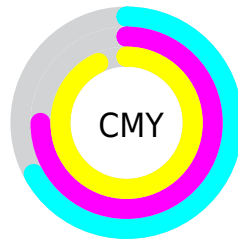


Cyan (0%)

Magenta (24%)

Yellow (77%)

Black (67%)



Cyan (67%)

Magenta (75%)

Yellow (93%)

Brightness & Saturation Gradients

These gradients show how the Hex color 533F13 changes by changing the brightness by 10 percent. The first figure shows a shift by +10% for each color and the second figure -10%.

Similar to the brightness gradients but the following saturation gradients show a change of the Hex color 533F13 by changing the saturation by 10% instead.

 533F13

 533F13

 FFFFF9

 3B2900

 876E40

 231500

 A28858

 000000

 BEA271

 DABD8B

 F7D9A5

 FFF5C1

 FFFFDD

 533F13

 533F13

■ 533C0B

■ 53421B

■ 533A02

■ 534424

■ 533900

■ 53472C

■ 534934

■ 534C3D

■ 534F45

■ 53514D

■ 535455

■ 53565E

Harmonies

Analogous

The Analogous color harmony consists of three colors that are next to each other on the color wheel.



63361E



533F13



3D4616

Triad

The Triadic color harmony groups three colors that are evenly spaced from another and form a triangle on the color wheel.



533F13



004D53



59355D

Complementary

The Complementary color scheme is a pair of colors which are on the opposite of each other on the color wheel.



533F13



132753

Split Complementary

Split-complementary colors differ from the complementary color scheme. The scheme consists of three colors, the original color and two neighbors of the complement color.



3A3E6C



533F13



004B66

Square

The Square scheme is like the rectangle color scheme, but the four colors are evenly spaced on the color wheel.



533F13



004D3C



00466F



692F48

Rectangle

The Rectangle color scheme consists of four colors that form a rectangle on the color wheel.



533F13



2C4920



00466F



503863

Sweetspot

The Sweet Spot groups the original color and five complimentary colors.



533F13



6B6352



531327



363127



B5B5B5



363636

Same Dimension

The Same Dimension uses a secret algorithm to generate beautiful new colors.



533F13



6B4C07



475313



292825



694800



E8A000

Inverse Universe

The Inverse Universe completely reimagines the original color for something new.



132753



07276B



1F1353



252629



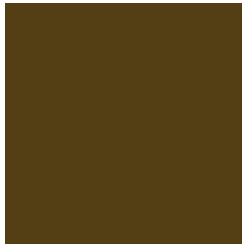
002169



0049E8

Previews

White Background



This preview shows how the Hex color 533F13 looks on a white background.

Color Contrast Check

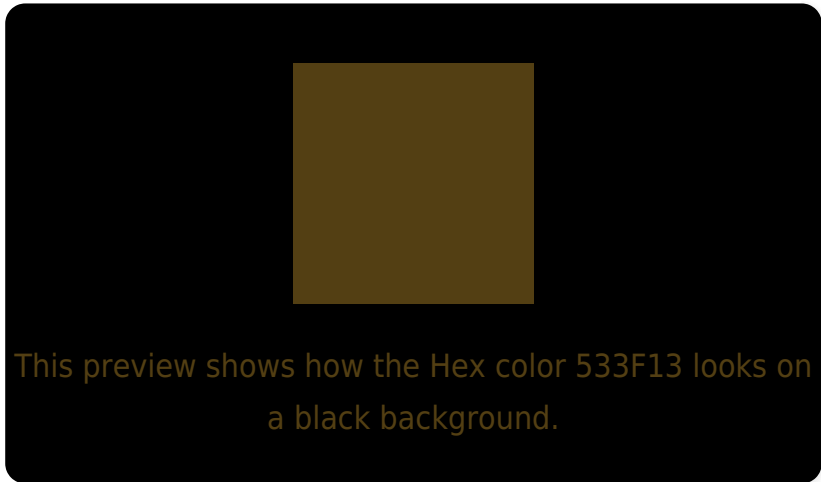
Large Text (above 18pt) WCAG AA ✓ Pass

Any Text WCAG AA ✓ Pass

Large Text (above 18pt) WCAG AAA ✓ Pass

Any Text WCAG AAA ✓ Pass

Black Background



Color Contrast Check

Large Text (above 18pt) WCAG AA × Fail

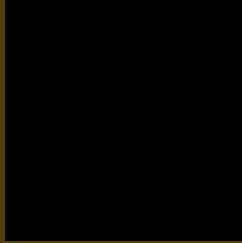
Any Text WCAG AA × Fail

Large Text (above 18pt) WCAG AAA × Fail

Any Text WCAG AAA × Fail

If you want to check with other color combinations, try the [Color Contrast Checker](#).

Hex 533F13 Background



This preview shows how black text looks on a background with the Hex color 533F13.

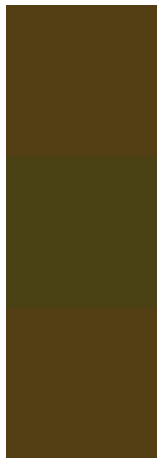


This preview shows how white text looks on a background with the Hex color 533F13.

Color Blindness Simulation

Color vision deficiency is a very complex topic, and I could not describe the different causes any better than Wikipedia does, so if you want to learn more, you should check out their [article about color blindness](#).

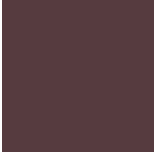
Dichromacy



Original Color
533F13

Protanopia
4A214

Deuteranopia
533F13



Tritanopia
563B3F

Trichromacy



Original Color
533F13

Protanomaly
4D4114

Deuteranomaly
533F13

Tritanomaly
553C2F

Monochromacy



Original Color
533F13

Achromatopsia
404040

Achromatomaly
474030

CSS Examples

Text

The CSS property to change the color of the text to Hex 533F13 is called "color". The color property can be set on classes, ids or directly on the HTML element.

This example shows how text in the color #533F13 looks like.

```
.text, #text, p{  
    color:#533F13  
}
```

If you want to add a text shadow in that color use the text-shadow property, you can generate a text shadow directly with our [CSS Text Shadow Generator](#).

Here you see how black text with a 4 pixel #533F13 colored shadow looks like.

```
.shadow{ text-shadow: 4px 4px 2px #533F13
}
```

Border

The CSS property to change the border of an element to Hex 533F13 is called "border". The border property can be set on classes, ids or directly on the HTML element.

This example shows the color as border, it can be applied via the CSS property "border" or "border-color".

```
.border, #border, table{ border:4px solid
#533F13 }
```

If only the border color should be changed use the property `border-color`.

```
.border{ border-color:#533F13 }
```

If you want to add a box shadow in that color use:

Here you see how a box with a 4 pixel #533F13 colored shadow looks like.

```
.boxshadow{ -moz-box-shadow:4px 4px 4px  
4px #533F13; -webkit-box-shadow:4px 4px  
4px 4px #533F13; box-shadow:4px 4px 4px  
4px #533F13 }
```

Background

The CSS property to change the background color of an element to Hex 533F13 is called "background". The background property can be set on classes, ids or directly on the HTML element.

```
.background, #background, body{  
background:#533F13 }
```

If only the background color should be changed can be used:

```
.background{ background-color:#533F13 }
```

This example shows the color as background, it is applied via the CSS property "background".

To optimize and compress your CSS code, you can use our [online CSS compressor and optimizer](#) based on csstidy. If you want to create a linear or radial gradient as background or border, check our [CSS Gradient Generator](#).

Hey! You found this booklet interesting? Support Converting Colors with the new Membership Option!

The pro membership hides all ads, plus gives you double the colors in the color bucket, and more awesome pro features!

[Learn more, Memberships starting at \\$2.50/m!](#)

**Follow me
on Twitter!**

@ConvertingColor