

# Converting Colors

Hex(53422E)

Have a look what the booklet for  
Hex(53422E) contains.

<b>Hex(53422E)</b> .....	3
<i><b>Conversions</b></i> .....	4
<i><b>Details</b></i> .....	6
<i><b>Harmonies</b></i> .....	11
<i><b>Previews</b></i> .....	23
<i><b>Color Blindness Simulation</b></i> .....	26
<i><b>CSS Examples</b></i> .....	29

# Color

Hex(53422E)

# Conversions

## Conversions Part 1

Format	Color
Hex	53422E
RGB	83, 66, 46
RGB Percent	33%, 26%, 18%
CMY	0.6745, 0.7412, 0.8196
CMYK	0.00, 0.20, 0.45, 0.67
HSL	32°, 29%, 25%
HSV	32°, 45%, 33%
XYZ	6.0086, 5.9327, 3.4132
YIQ	68.8030, 16.5520, -2.6160

# Conversions

## Conversions Part 2

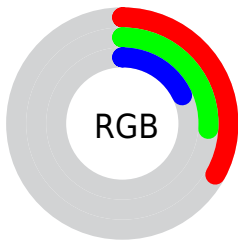
Format	Color
<b>RYB</b>	77, 83, 46
Decimal	5456430
CIELab	29.24, 4.17, 14.94
CIELCh	29, 15.514, 74.396
Yxy	5.9327, 0.3913, 0.3864
Android (android.graphics.Color)	4283646510 (0xFF53422E)
YUV	68.8030, -11.2419, 12.4508
Hunter-Lab	24.3571, 1.4091, 8.7416

# Details

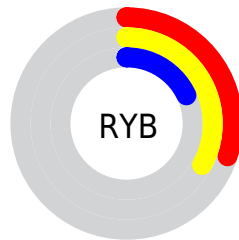
The Hex color **53422E** is a dark color, and the websafe version is hex **333333**. A complement of this color would be **2E3F53**, and the grayscale version is **454545**.

A 20% lighter version of the original color is **85725C**, and **261700** is the 20% darker color. If you saturate the color by 10%, you get **533E26**, and if you desaturate by 10%, it is **534636**.

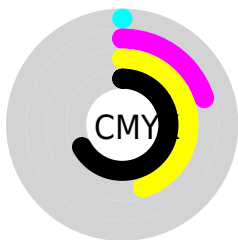
# Distribution



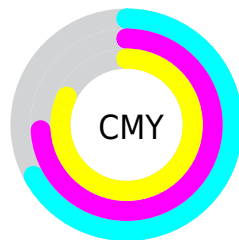
- Red (33%)
- Green (26%)
- Blue (18%)



- Red (30%)
- Yellow (33%)
- Blue (18%)



- Cyan (0%)
- Magenta (20%)
- Yellow (45%)
- Black (67%)



- Cyan (67%)
- Magenta (74%)
- Yellow (82%)

# Brightness & Saturation Gradients

These gradients show how the Hex color 53422E changes by changing the brightness by 10 percent. The first figure shows a shift by +10% for each color and the second figure -10%.

Similar to the brightness gradients but the following saturation gradients show a change of the Hex color 53422E by changing the saturation by 10% instead.



■ 53422E

■ 53422E

FFFFFF

■ 3B2C19

■ 85725C

■ 261700

■ A08B75

■ 020000

■ BBA68E

■ 000000

■ D7C1A9

■ F4DDC4

■ FFF9E0

■ FFFFFD

■ 53422E

■ 53422E

■ 533E26

■ 534636

■ 533A1D

■ 534A3F

■ 533715

■ 534D47

■ 53330D

■ 53514F

■ 532F04

■ 535557

■ 532D00

■ 535960

■ 535D68

■ 536170

■ 536479

# Harmonies

## Analogous

The Analogous color harmony consists of three colors that are next to each other on the color wheel.



5B3E35



53422E



48462E

# Triad

The Triadic color harmony groups three colors that are evenly spaced from another and form a triangle on the color wheel.



53422E



214C4A



4E4056

# Complementary

The Complementary color scheme is a pair of colors which are on the opposite of each other on the color wheel.



53422E



2E3F53

# Split Complementary

Split-complementary colors differ from the complementary color scheme. The scheme consists of three colors, the original color and two neighbors of the complement color.



3E445C



53422E



204A55

# Square

The Square scheme is like the rectangle color scheme, but the four colors are evenly spaced on the color wheel.



53422E



2C4B3E



2C485C



593D4C

# Rectangle

The Rectangle color scheme consists of four colors that form a rectangle on the color wheel.



53422E



3F4831



2C485C



494159



# Sweetspot

The Sweet Spot groups the original color and five complimentary colors.



53422E



6B655D



532E3F



36322D



B5B5B5



363636



# Same Dimension

The Same Dimension uses a secret algorithm to generate beautiful new colors.



53422E



6B5132



52532E



292725



693900



E87D00



# Inverse Universe

The Inverse Universe completely reimagines the original color for something new.



2E3F53



324C6B



2F2E53



252729



003069

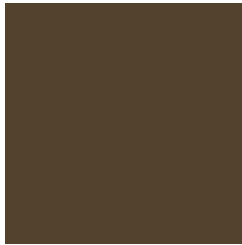


006BE8



# Previews

## White Background



This preview shows how the Hex color 53422E looks on a white background.

## Color Contrast Check

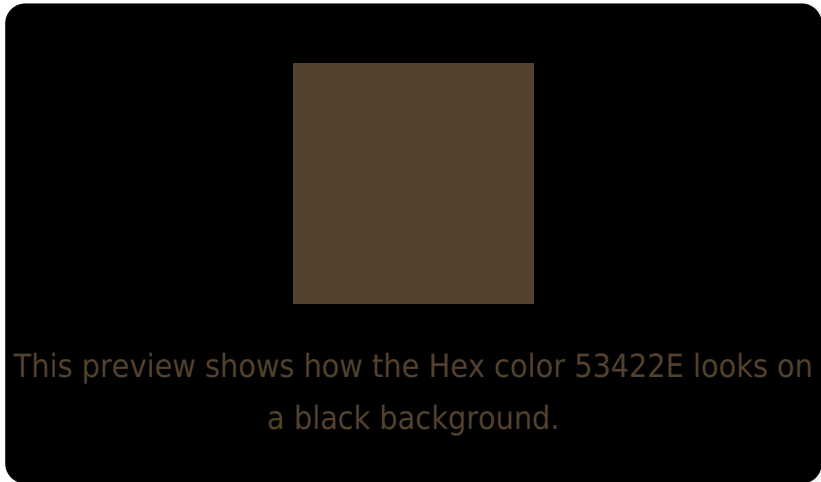
Large Text (above 18pt) WCAG AA ✓ Pass

Any Text WCAG AA ✓ Pass

Large Text (above 18pt) WCAG AAA ✓ Pass

Any Text WCAG AAA ✓ Pass

# Black Background



## Color Contrast Check

Large Text (above 18pt) WCAG AA × Fail

Any Text WCAG AA × Fail

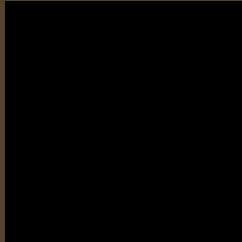
Large Text (above 18pt) WCAG AAA × Fail

Any Text WCAG AAA × Fail

If you want to check with other color combinations, try the [Color Contrast Checker](#).



## Hex 53422E Background



This preview shows how black text looks on a background with the Hex color 53422E.



This preview shows how white text looks on a background with the Hex color 53422E.

# Color Blindness Simulation

Color vision deficiency is a very complex topic, and I could not describe the different causes any better than Wikipedia does, so if you want to learn more, you should check out their [article about color blindness](#).


## Dichromacy



**Original Color**  
53422E

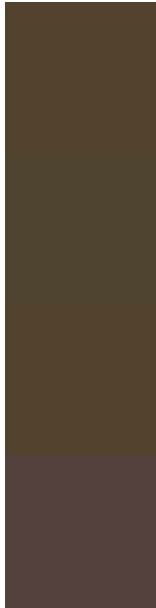
**Protanopia**  
4B452F

**Deuteranopia**  
53422E



**Tritanopia**  
553F44

# Trichromacy



**Original Color**  
53422E

**Protanomaly**  
4E442F

**Deuteranomaly**  
53422E

**Tritanomaly**  
54403C

# Monochromacy



**Original Color**  
53422E

**Achromatopsia**  
454545

**Achromatomaly**  
4A443D

# CSS Examples

## Text

The CSS property to change the color of the text to Hex 53422E is called "color". The color property can be set on classes, ids or directly on the HTML element.

This example shows how text in the color #53422E looks like.

```
.text, #text, p{  
    color:#53422E  
}
```

If you want to add a text shadow in that color use the text-shadow property, you can generate a text shadow directly with our [CSS Text Shadow Generator](#).

Here you see how black text with a 4 pixel #53422E colored shadow looks like.

```
.shadow{ text-shadow: 4px 4px 2px #53422E
}
```

## Border

The CSS property to change the border of an element to Hex 53422E is called "border". The border property can be set on classes, ids or directly on the HTML element.

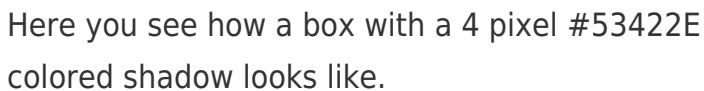
This example shows the color as border, it can be applied via the CSS property "border" or "border-color".

```
.border, #border, table{ border:4px solid
#53422E }
```

If only the border color should be changed use the property `border-color`.

```
.border{ border-color:#53422E }
```

If you want to add a box shadow in that color use:



Here you see how a box with a 4 pixel #53422E colored shadow looks like.

```
.boxshadow{ -moz-box-shadow:4px 4px 4px  
4px #53422E; -webkit-box-shadow:4px 4px  
4px 4px #53422E; box-shadow:4px 4px 4px  
4px #53422E }
```

# Background

The CSS property to change the background color of an element to Hex 53422E is called "background". The background property can be set on classes, ids or directly on the HTML element.

```
.background, #background, body{  
background:#53422E }
```

If only the background color should be changed can be used:

```
.background{ background-color:#53422E }
```

This example shows the color as background, it is applied via the CSS property "background".

To optimize and compress your CSS code, you can use our [online CSS compressor and optimizer](#) based on csstidy. If you want to create a linear or radial gradient as background or border, check our [CSS Gradient Generator](#).



Hey! You found this booklet interesting? Support Converting Colors with the new Membership Option!

The pro membership hides all ads, plus gives you double the colors in the color bucket, and more awesome pro features!

**[Learn more, Memberships starting at \\$2.50/m!](#)**

**Follow me  
on Twitter!**

@ConvertingColor