

Converting Colors

Hex(542815)

Have a look what the booklet for
Hex(542815) contains.

Hex(542815)	3
<i>Conversions</i>	4
<i>Details</i>	6
<i>Harmonies</i>	11
<i>Previews</i>	23
<i>Color Blindness Simulation</i>	26
<i>CSS Examples</i>	29

Color

Hex(542815)

Conversions

Conversions Part 1

Format	Color
Hex	542815
RGB	84, 40, 21
RGB Percent	33%, 16%, 8%
CMY	0.6706, 0.8431, 0.9176
CMYK	0.00, 0.52, 0.75, 0.67
HSL	18°, 60%, 21%
HSV	18°, 75%, 33%
XYZ	4.5503, 3.4565, 1.1368
YIQ	50.9900, 32.3230, 3.4190

Conversions

Conversions Part 2

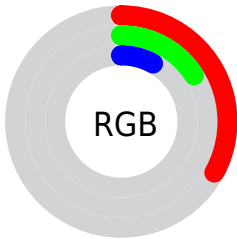
Format	Color
R_{YB}	84, 48, 21
Decimal	5515285
CIE Lab	21.79, 18.68, 21.44
CIE LCh	22, 28.434, 48.932
Yxy	3.4565, 0.4976, 0.3780
Android (android.graphics.Color)	4283705365 (0xFF542815)
YUV	50.9900, -14.7851, 28.9498
Hunter-Lab	18.5918, 11.1519, 9.3889

Details

The Hex color **542815** is a dark color, and the websafe version is hex **663333**. A complement of this color would be **154154**, and the grayscale version is **333333**.

A 20% lighter version of the original color is **895640**, and **240000** is the 20% darker color. If you saturate the color by 10%, you get **54220D**, and if you desaturate by 10%, it is **542E1D**.

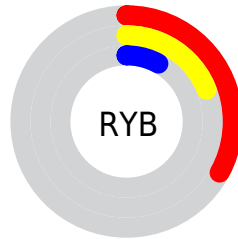
Distribution



Red (33%)

Green (16%)

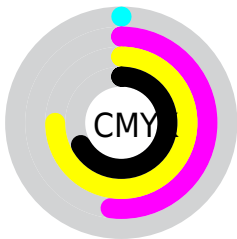
Blue (8%)



Red (33%)

Yellow (19%)

Blue (8%)

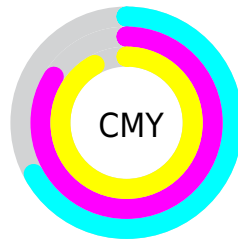


Cyan (0%)

Magenta (52%)

Yellow (75%)

Black (67%)



Cyan (67%)

Magenta (84%)

Yellow (92%)

Brightness & Saturation Gradients

These gradients show how the Hex color 542815 changes by changing the brightness by 10 percent. The first figure shows a shift by +10% for each color and the second figure -10%.

Similar to the brightness gradients but the following saturation gradients show a change of the Hex color 542815 by changing the saturation by 10% instead.

 542815

 542815

 FFFFF8

 3B1200

 895640

 240000

 A56F58

 000000

 C18870

 DEA38A

 FBBEA4

 FFDABF

 FFF6DB

 542815

 542815

■ 54220D

■ 542E1D

■ 541C04

■ 543426

■ 541900

■ 543A2E

■ 543F37

■ 54453F

■ 544B47

■ 545150

■ 545758

■ 545D61

Harmonies

Analogous

The Analogous color harmony consists of three colors that are next to each other on the color wheel.



5A2128



542815



463007

Triad

The Triadic color harmony groups three colors that are evenly spaced from another and form a triangle on the color wheel.



542815



003E2B



26325C

Complementary

The Complementary color scheme is a pair of colors which are on the opposite of each other on the color wheel.



542815



154154

Split Complementary

Split-complementary colors differ from the complementary color scheme. The scheme consists of three colors, the original color and two neighbors of the complement color.



00395D



542815



003E41

Square

The Square scheme is like the rectangle color scheme, but the four colors are evenly spaced on the color wheel.



542815



193C17



003D54



462950

Rectangle

The Rectangle color scheme consists of four colors that form a rectangle on the color wheel.



542815



393505



003D54



14345E

Sweetspot

The Sweet Spot groups the original color and five complimentary colors.



542815



6E5C54



541541



382D28



B8B8B8



383838

Same Dimension

The Same Dimension uses a secret algorithm to generate beautiful new colors.



542815



6E290B



544715



292625



692000



E84600

Inverse Universe

The Inverse Universe completely reimagines the original color for something new.



154154



0B506E



152254



252829



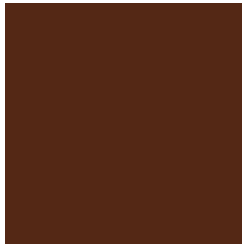
004969



00A2E8

Previews

White Background



This preview shows how the Hex color 542815 looks on a white background.

Color Contrast Check

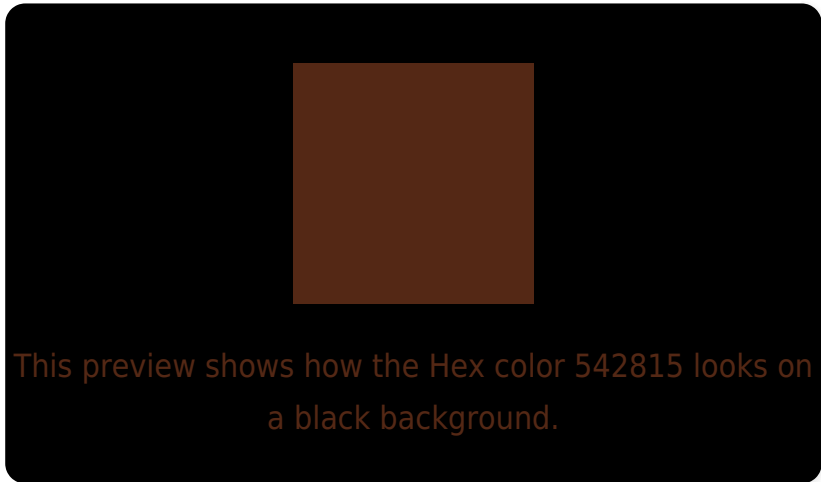
Large Text (above 18pt) WCAG AA ✓ Pass

Any Text WCAG AA ✓ Pass

Large Text (above 18pt) WCAG AAA ✓ Pass

Any Text WCAG AAA ✓ Pass

Black Background



Color Contrast Check

Large Text (above 18pt) WCAG AA × Fail

Any Text WCAG AA × Fail

Large Text (above 18pt) WCAG AAA × Fail

Any Text WCAG AAA × Fail

If you want to check with other color combinations, try the [Color Contrast Checker](#).

Hex 542815 Background



This preview shows how black text looks on a background with the Hex color 542815.

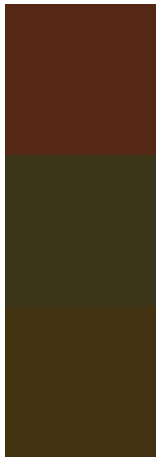


This preview shows how white text looks on a background with the Hex color 542815.

Color Blindness Simulation

Color vision deficiency is a very complex topic, and I could not describe the different causes any better than Wikipedia does, so if you want to learn more, you should check out their [article about color blindness](#).


Dichromacy



Original Color
542815

Protanopia
3B3519

Deuteranopia
423212



Tritanopia
552628

Trichromacy



Original Color
542815

Protanomaly
443018

Deuteranomaly
492E13

Tritanomaly
552721

Monochromacy



Original Color
542815

Achromatopsia
333333

Achromatomaly
3F2F28

CSS Examples

Text

The CSS property to change the color of the text to Hex 542815 is called "color". The color property can be set on classes, ids or directly on the HTML element.

This example shows how text in the color #542815 looks like.

```
.text, #text, p{  
    color:#542815  
}
```

If you want to add a text shadow in that color use the text-shadow property, you can generate a text shadow directly with our [CSS Text Shadow Generator](#).

Here you see how black text with a 4 pixel #542815 colored shadow looks like.

```
.shadow{ text-shadow: 4px 4px 2px #542815
}
```

Border

The CSS property to change the border of an element to Hex 542815 is called "border". The border property can be set on classes, ids or directly on the HTML element.

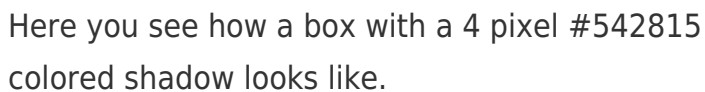
This example shows the color as border, it can be applied via the CSS property "border" or "border-color".

```
.border, #border, table{ border:4px solid
#542815 }
```

If only the border color should be changed use the property `border-color`.

```
.border{ border-color:#542815 }
```

If you want to add a box shadow in that color use:



Here you see how a box with a 4 pixel #542815 colored shadow looks like.

```
.boxshadow{ -moz-box-shadow:4px 4px 4px  
4px #542815; -webkit-box-shadow:4px 4px  
4px 4px #542815; box-shadow:4px 4px 4px  
4px #542815 }
```

Background

The CSS property to change the background color of an element to Hex 542815 is called "background". The background property can be set on classes, ids or directly on the HTML element.

```
.background, #background, body{  
background:#542815 }
```

If only the background color should be changed can be used:

```
.background{ background-color:#542815 }
```

This example shows the color as background, it is applied via the CSS property "background".

To optimize and compress your CSS code, you can use our [online CSS compressor and optimizer](#) based on csstidy. If you want to create a linear or radial gradient as background or border, check our [CSS Gradient Generator](#).

Hey! You found this booklet interesting? Support Converting Colors with the new Membership Option!

The pro membership hides all ads, plus gives you double the colors in the color bucket, and more awesome pro features!

[Learn more, Memberships starting at \\$2.50/m!](#)

**Follow me
on Twitter!**

@ConvertingColor