

Converting Colors

Hex(542928)

Have a look what the booklet for
Hex(542928) contains.

Hex(542928)	3
<i>Conversions</i>	4
<i>Details</i>	6
<i>Harmonies</i>	11
<i>Previews</i>	23
<i>Color Blindness Simulation</i>	26
<i>CSS Examples</i>	29

Color

Hex(542928)

Conversions

Conversions Part 1

Format	Color
Hex	542928
RGB	84, 41, 40
RGB Percent	33%, 16%, 16%
CMY	0.6706, 0.8392, 0.8431
CMYK	0.00, 0.51, 0.52, 0.67
HSL	1°, 35%, 24%
HSV	1°, 52%, 33%
XYZ	4.8321, 3.6239, 2.4523
YIQ	53.7430, 25.9490, 8.8050

Conversions

Conversions Part 2

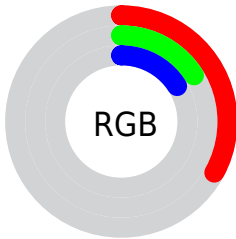
Format	Color
R_{YB}	84, 41, 40
Decimal	5515560
CIE _{Lab}	22.39, 19.77, 9.70
CIE _{LCh}	22, 22.019, 26.148
Yxy	3.6239, 0.4430, 0.3322
Android (android.graphics.Color)	4283705640 (0xFF542928)
YUV	53.7430, -6.7753, 26.5354
Hunter-Lab	19.0365, 11.9952, 5.6878

Details

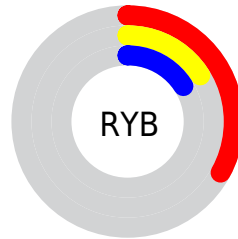
The Hex color **542928** is a dark color, and the websafe version is hex **663333**. A complement of this color would be **285354**, and the grayscale version is **363636**.

A 20% lighter version of the original color is **885755**, and **260000** is the 20% darker color. If you saturate the color by 10%, you get **542120**, and if you desaturate by 10%, it is **543130**.

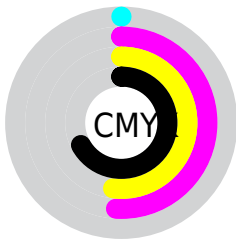
Distribution



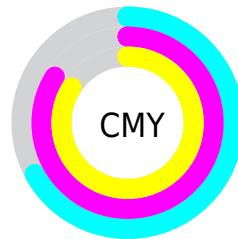
- Red (33%)
- Green (16%)
- Blue (16%)



- Red (33%)
- Yellow (16%)
- Blue (16%)



- Cyan (0%)
- Magenta (51%)
- Yellow (52%)
- Black (67%)



- Cyan (67%)
- Magenta (84%)
- Yellow (84%)

Brightness & Saturation Gradients

These gradients show how the Hex color 542928 changes by changing the brightness by 10 percent. The first figure shows a shift by +10% for each color and the second figure -10%.

Similar to the brightness gradients but the following saturation gradients show a change of the Hex color 542928 by changing the saturation by 10% instead.

■ 542928

■ 542928

FFFFFF

■ 3B1314

■ 885755

■ 260000

■ A3706D

■ 000000

■ BF8A87

■ DBA4A1

■ F8BFBC

■ FFDBD7

■ FFF8F4

■ 542928

■ 542928

■ 542120

■ 543130

■ 541917

■ 543939

■ 54100F

■ 544241

■ 540806

■ 544A4A

■ 540200

■ 545252

■ 545A5A

■ 546263

■ 546B6B

■ 547374

Harmonies

Analogous

The Analogous color harmony consists of three colors that are next to each other on the color wheel.



532838



542928



4D2E1B

Triad

The Triadic color harmony groups three colors that are evenly spaced from another and form a triangle on the color wheel.



542928



1D3C23



133856

Complementary

The Complementary color scheme is a pair of colors which are on the opposite of each other on the color wheel.



542928



285354

Split Complementary

Split-complementary colors differ from the complementary color scheme. The scheme consists of three colors, the original color and two neighbors of the complement color.



003C50



542928



003E33

Square

The Square scheme is like the rectangle color scheme, but the four colors are evenly spaced on the color wheel.



542928



313917



003E43



333253

Rectangle

The Rectangle color scheme consists of four colors that form a rectangle on the color wheel.



542928



463215



003E43



003955

Sweetspot

The Sweet Spot groups the original color and five complimentary colors.



542928



6E5D5C



542853



382E2D



B8B8B8



383838

Same Dimension

The Same Dimension uses a secret algorithm to generate beautiful new colors.



542928



6E2A29



543F28



292525



690200



E80500

Inverse Universe

The Inverse Universe completely reimagines the original color for something new.



285354



296C6E



283D54



252929



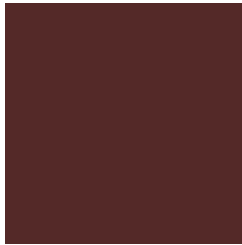
006669



00E3E8

Previews

White Background



This preview shows how the Hex color 542928 looks on a white background.

Color Contrast Check

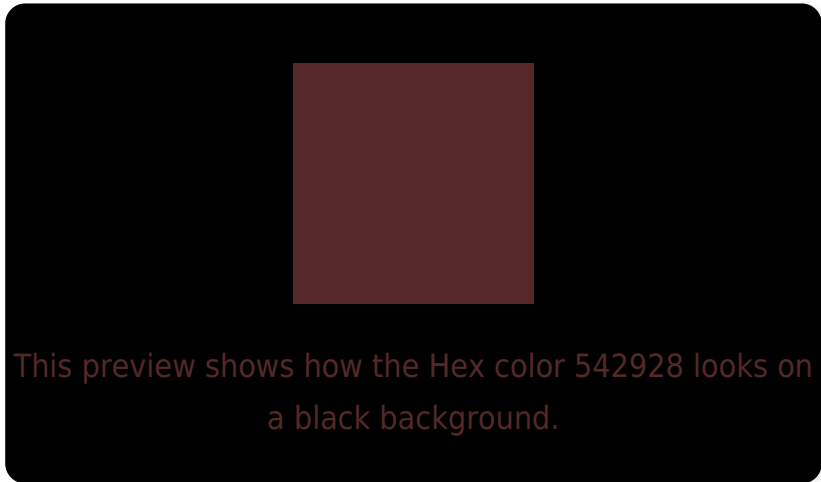
Large Text (above 18pt) WCAG AA ✓ Pass

Any Text WCAG AA ✓ Pass

Large Text (above 18pt) WCAG AAA ✓ Pass

Any Text WCAG AAA ✓ Pass

Black Background



Color Contrast Check

Large Text (above 18pt) WCAG AA × Fail

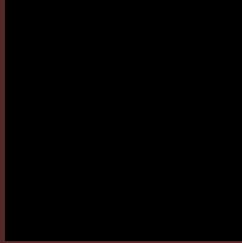
Any Text WCAG AA × Fail

Large Text (above 18pt) WCAG AAA × Fail

Any Text WCAG AAA × Fail

If you want to check with other color combinations, try the [Color Contrast Checker](#).

Hex 542928 Background



This preview shows how black text looks on a background with the Hex color 542928.

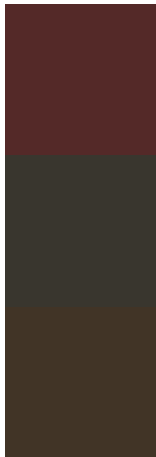


This preview shows how white text looks on a background with the Hex color 542928.

Color Blindness Simulation

Color vision deficiency is a very complex topic, and I could not describe the different causes any better than Wikipedia does, so if you want to learn more, you should check out their [article about color blindness](#).

Dichromacy



Original Color
542928

Protanopia
39362E

Deuteranopia
413426



Tritanopia
54282B

Trichromacy



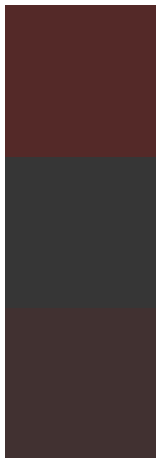
Original Color
542928

Protanomaly
43312C

Deuteranomaly
483027

Tritanomaly
54282A

Monochromacy



Original Color
542928

Achromatopsia
363636

Achromatomaly
413131

CSS Examples

Text

The CSS property to change the color of the text to Hex 542928 is called "color". The color property can be set on classes, ids or directly on the HTML element.

This example shows how text in the color #542928 looks like.

```
.text, #text, p{  
    color:#542928  
}
```

If you want to add a text shadow in that color use the text-shadow property, you can generate a text shadow directly with our [CSS Text Shadow Generator](#).

Here you see how black text with a 4 pixel #542928 colored shadow looks like.

```
.shadow{ text-shadow: 4px 4px 2px #542928
}
```

Border

The CSS property to change the border of an element to Hex 542928 is called "border". The border property can be set on classes, ids or directly on the HTML element.

This example shows the color as border, it can be applied via the CSS property "border" or "border-color".

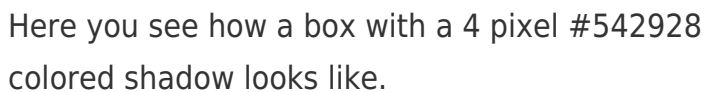
```
.border, #border, table{ border:4px solid
#542928 }
```

If only the border color should be changed use the property border-color.

```
.border{ border-color:#542928 }
```

If you want to add a box shadow in that color use:

Here you see how a box with a 4 pixel #542928 colored shadow looks like.

A rectangular box with a dark red border and a dark red shadow. The box is white with a thin dark red border on the top and left sides, and a thicker dark red shadow on the bottom and right sides.

```
.boxshadow{ -moz-box-shadow:4px 4px 4px  
4px #542928; -webkit-box-shadow:4px 4px  
4px 4px #542928; box-shadow:4px 4px 4px  
4px #542928 }
```

Background

The CSS property to change the background color of an element to Hex 542928 is called "background". The background property can be set on classes, ids or directly on the HTML element.

```
.background, #background, body{  
background:#542928 }
```

If only the background color should be changed can be used:

```
.background{ background-color:#542928 }
```

This example shows the color as background, it is applied via the CSS property "background".

To optimize and compress your CSS code, you can use our [online CSS compressor and optimizer](#) based on csstidy. If you want to create a linear or radial gradient as background or border, check our [CSS Gradient Generator](#).

Hey! You found this booklet interesting? Support Converting Colors with the new Membership Option!

The pro membership hides all ads, plus gives you double the colors in the color bucket, and more awesome pro features!

[Learn more, Memberships starting at \\$2.50/m!](#)

**Follow me
on Twitter!**

@ConvertingColor