

Converting Colors

Hex(542A2C)

Have a look what the booklet for
Hex(542A2C) contains.

Hex(542A2C)	3
<i>Conversions</i>	4
<i>Details</i>	6
<i>Harmonies</i>	11
<i>Previews</i>	23
<i>Color Blindness Simulation</i>	26
<i>CSS Examples</i>	29

Color

Hex(542A2C)

Conversions

Conversions Part 1

Format	Color
Hex	542A2C
RGB	84, 42, 44
RGB Percent	33%, 16%, 17%
CMY	0.6706, 0.8353, 0.8275
CMYK	0.00, 0.50, 0.48, 0.67
HSL	357°, 33%, 25%
HSV	357°, 50%, 33%
XYZ	4.9387, 3.7226, 2.8411
YIQ	54.7860, 24.3900, 9.5260

Conversions

Conversions Part 2

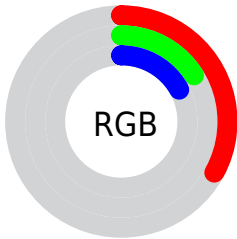
Format	Color
RYB	84, 42, 44
Decimal	5515820
CIELab	22.73, 19.63, 7.46
CIELCh	23, 20.999, 20.807
Yxy	3.7226, 0.4294, 0.3236
Android (android.graphics.Color)	4283705900 (0xFF542A2C)
YUV	54.7860, -5.3175, 25.6207
Hunter-Lab	19.2940, 11.9266, 4.7752

Details

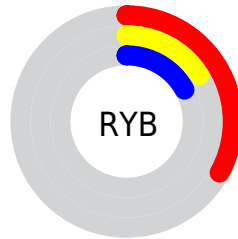
The Hex color **542A2C** is a dark color, and the websafe version is hex **663333**. A complement of this color would be **2A5452**, and the grayscale version is **373737**.

A 20% lighter version of the original color is **885859**, and **270000** is the 20% darker color. If you saturate the color by 10%, you get **542224**, and if you desaturate by 10%, it is **543234**.

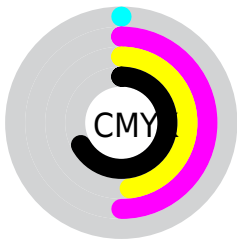
Distribution



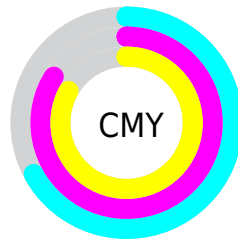
- Red (33%)
- Green (16%)
- Blue (17%)



- Red (33%)
- Yellow (16%)
- Blue (17%)



- Cyan (0%)
- Magenta (50%)
- Yellow (48%)
- Black (67%)



- Cyan (67%)
- Magenta (84%)
- Yellow (83%)

Brightness & Saturation Gradients

These gradients show how the Hex color 542A2C changes by changing the brightness by 10 percent. The first figure shows a shift by +10% for each color and the second figure -10%.

Similar to the brightness gradients but the following saturation gradients show a change of the Hex color 542A2C by changing the saturation by 10% instead.

 542A2C

 542A2C

FFFFFF

 3B1418

 885859

 270000

 A37172

 000000

 BE8B8B

 DBA5A6

 F7C1C1

 FFDDDD

 FFF9F9

 542A2C

 542A2C

■ 542224

■ 543234

■ 54191C

■ 543B3C

■ 541114

■ 544344

■ 54080C

■ 544C4C

■ 540004

■ 545454

■ 545C5C

■ 546564

■ 546D6C

■ 547674

Harmonies

Analogous

The Analogous color harmony consists of three colors that are next to each other on the color wheel.



512A3C



542A2C



4F2E1F

Triad

The Triadic color harmony groups three colors that are evenly spaced from another and form a triangle on the color wheel.



542A2C



233C22



103955

Complementary

The Complementary color scheme is a pair of colors which are on the opposite of each other on the color wheel.



542A2C



2A5452

Split Complementary

Split-complementary colors differ from the complementary color scheme. The scheme consists of three colors, the original color and two neighbors of the complement color.



003D4E



542A2C



083E31

Square

The Square scheme is like the rectangle color scheme, but the four colors are evenly spaced on the color wheel.



542A2C



353918



003E41



303453

Rectangle

The Rectangle color scheme consists of four colors that form a rectangle on the color wheel.



542A2C



483219



003E41



003B54

Sweetspot

The Sweet Spot groups the original color and five complimentary colors.



542A2C



6E5D5E



522A54



382E2E



B8B8B8



383838

Same Dimension

The Same Dimension uses a secret algorithm to generate beautiful new colors.



542A2C



6E2C2F



543D2A



292525



690005



E8000B

Inverse Universe

The Inverse Universe completely reimagines the original color for something new.



542A2C



6E2C2F



2A4154



292525



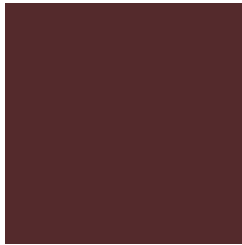
690005



E8000B

Previews

White Background



This preview shows how the Hex color 542A2C looks on a white background.

Color Contrast Check

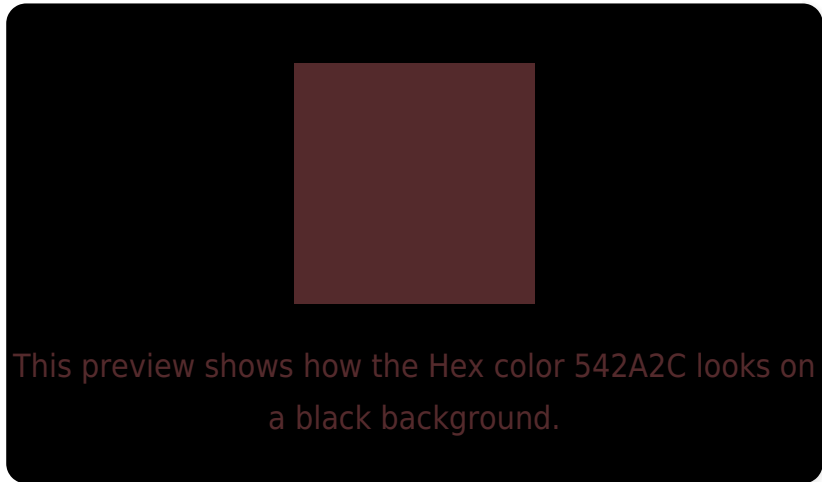
Large Text (above 18pt) WCAG AA ✓ Pass

Any Text WCAG AA ✓ Pass

Large Text (above 18pt) WCAG AAA ✓ Pass

Any Text WCAG AAA ✓ Pass

Black Background



Color Contrast Check

Large Text (above 18pt) WCAG AA × Fail

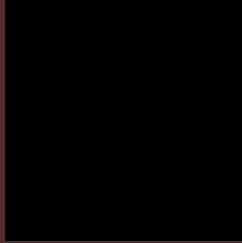
Any Text WCAG AA × Fail

Large Text (above 18pt) WCAG AAA × Fail

Any Text WCAG AAA × Fail

If you want to check with other color combinations, try the [Color Contrast Checker](#).

Hex 542A2C Background



This preview shows how black text looks on a background with the Hex color 542A2C.



This preview shows how white text looks on a background with the Hex color 542A2C.

Color Blindness Simulation

Color vision deficiency is a very complex topic, and I could not describe the different causes any better than Wikipedia does, so if you want to learn more, you should check out their [article about color blindness](#).

Dichromacy



Original Color
542A2C

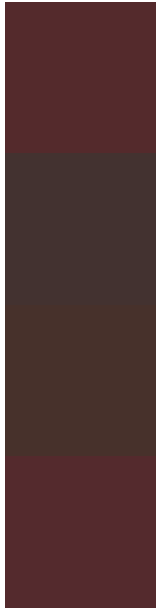
Protanopia
393732

Deuteranopia
40352A



Tritanopia
542A2D

Trichromacy



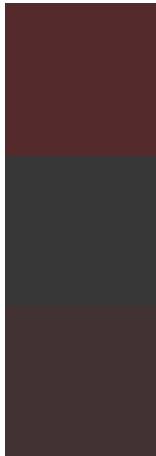
Original Color
542A2C

Protanomaly
433230

Deuteranomaly
47312B

Tritanomaly
542A2D

Monochromacy



Original Color
542A2C

Achromatopsia
373737

Achromatomaly
423233

CSS Examples

Text

The CSS property to change the color of the text to Hex 542A2C is called "color". The color property can be set on classes, ids or directly on the HTML element.

This example shows how text in the color #542A2C looks like.

```
.text, #text, p{  
    color:#542A2C  
}
```

If you want to add a text shadow in that color use the text-shadow property, you can generate a text shadow directly with our [CSS Text Shadow Generator](#).

Here you see how black text with a 4 pixel #542A2C colored shadow looks like.

```
.shadow{ text-shadow: 4px 4px 2px #542A2C
}
```

Border

The CSS property to change the border of an element to Hex 542A2C is called "border". The border property can be set on classes, ids or directly on the HTML element.

This example shows the color as border, it can be applied via the CSS property "border" or "border-color".

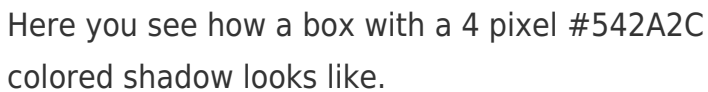
```
.border, #border, table{ border:4px solid
#542A2C }
```

If only the border color should be changed use the property `border-color`.

```
.border{ border-color:#542A2C }
```

If you want to add a box shadow in that color use:

Here you see how a box with a 4 pixel #542A2C colored shadow looks like.

A rectangular box with a dark red border and a dark red shadow. The shadow is cast to the right and bottom of the box, creating a 3D effect. The text inside the box is black and reads: "Here you see how a box with a 4 pixel #542A2C colored shadow looks like."

```
.boxshadow{ -moz-box-shadow:4px 4px 4px  
4px #542A2C; -webkit-box-shadow:4px 4px  
4px 4px #542A2C; box-shadow:4px 4px 4px  
4px #542A2C }
```

Background

The CSS property to change the background color of an element to Hex 542A2C is called "background". The background property can be set on classes, ids or directly on the HTML element.

```
.background, #background, body{  
background:#542A2C }
```

If only the background color should be changed can be used:

```
.background{ background-color:#542A2C }
```

This example shows the color as background, it is applied via the CSS property "background".

To optimize and compress your CSS code, you can use our [online CSS compressor and optimizer](#) based on csstidy. If you want to create a linear or radial gradient as background or border, check our [CSS Gradient Generator](#).

Hey! You found this booklet interesting? Support Converting Colors with the new Membership Option!

The pro membership hides all ads, plus gives you double the colors in the color bucket, and more awesome pro features!

[Learn more, Memberships starting at \\$2.50/m!](#)

**Follow me
on Twitter!**

@ConvertingColor