

Converting Colors

Hex(543B42)

Have a look what the booklet for
Hex(543B42) contains.

Hex(543B42)	3
<i>Conversions</i>	4
<i>Details</i>	6
<i>Harmonies</i>	11
<i>Previews</i>	23
<i>Color Blindness Simulation</i>	26
<i>CSS Examples</i>	29

Color

Hex(543B42)

Conversions

Conversions Part 1

Format	Color
Hex	543B42
RGB	84, 59, 66
RGB Percent	33%, 23%, 26%
CMY	0.6706, 0.7686, 0.7412
CMYK	0.00, 0.30, 0.21, 0.67
HSL	343°, 17%, 28%
HSV	343°, 30%, 33%
XYZ	6.2035, 5.4061, 5.8708
YIQ	67.2730, 12.6530, 7.4770

Conversions

Conversions Part 2

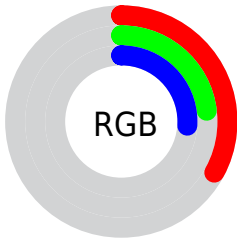
Format	Color
R_{YB}	84, 59, 66
Decimal	5520194
CIE Lab	27.86, 12.25, 0.07
CIE LCh	28, 12.253, 0.311
Yxy	5.4061, 0.3549, 0.3093
Android (android.graphics.Color)	4283710274 (0xFF543B42)
YUV	67.2730, -0.6276, 14.6696
Hunter-Lab	23.2510, 6.9355, 1.3052

Details

The Hex color **543B42** is a dark color, and the websafe version is hex **333333**. A complement of this color would be **3B544D**, and the grayscale version is **434343**.

A 20% lighter version of the original color is **866A72**, and **261117** is the 20% darker color. If you saturate the color by 10%, you get **54333C**, and if you desaturate by 10%, it is **544348**.

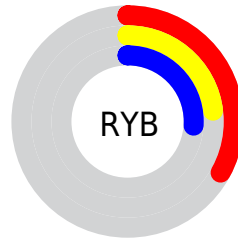
Distribution



 Red (33%)

 Green (23%)

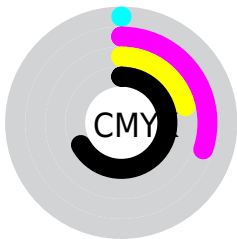
 Blue (26%)



 Red (33%)

 Yellow (23%)

 Blue (26%)

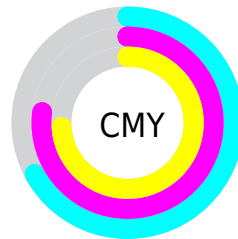


 Cyan (0%)

 Magenta (30%)

 Yellow (21%)

 Black (67%)



 Cyan (67%)

 Magenta (77%)

 Yellow (74%)

Brightness & Saturation Gradients

These gradients show how the Hex color 543B42 changes by changing the brightness by 10 percent. The first figure shows a shift by +10% for each color and the second figure -10%.

Similar to the brightness gradients but the following saturation gradients show a change of the Hex color 543B42 by changing the saturation by 10% instead.



543B42



543B42

FFFFFF



3C252C



866A72



261117



A0848B



080000



BC9EA6



000000



D7B9C1



F4D5DD



FFF1F9



543B42



543B42



54333C



544348

■ 542A36

■ 544C4E

■ 542230

■ 545454

■ 54192A

■ 545D5A

■ 541124

■ 546560

■ 54091E

■ 546D66

■ 540018

■ 54766C

■ 547E72

■ 548778

Harmonies

Analogous

The Analogous color harmony consists of three colors that are next to each other on the color wheel.



4E3C4B



543B42



553C39

Triad

The Triadic color harmony groups three colors that are evenly spaced from another and form a triangle on the color wheel.



543B42



3E4431



2B4552

Complementary

The Complementary color scheme is a pair of colors which are on the opposite of each other on the color wheel.



543B42



3B544D

Split Complementary

Split-complementary colors differ from the complementary color scheme. The scheme consists of three colors, the original color and two neighbors of the complement color.



27474B



543B42



344638

Square

The Square scheme is like the rectangle color scheme, but the four colors are evenly spaced on the color wheel.



543B42



49412F



2B4742



364354

Rectangle

The Rectangle color scheme consists of four colors that form a rectangle on the color wheel.



543B42



523D34



2B4742



294650

Sweetspot

The Sweet Spot groups the original color and five complimentary colors.



543B42



6E6467



4D3B54



383234



B8B8B8



383838

Same Dimension

The Same Dimension uses a secret algorithm to generate beautiful new colors.



543B42



6E4651



54403B



292526



69001D



E80041

Inverse Universe

The Inverse Universe completely reimagines the original color for something new.



543B42



6E4651



3B4F54



292526



69001D



E80041

Previews

White Background



This preview shows how the Hex color 543B42 looks on a white background.

Color Contrast Check

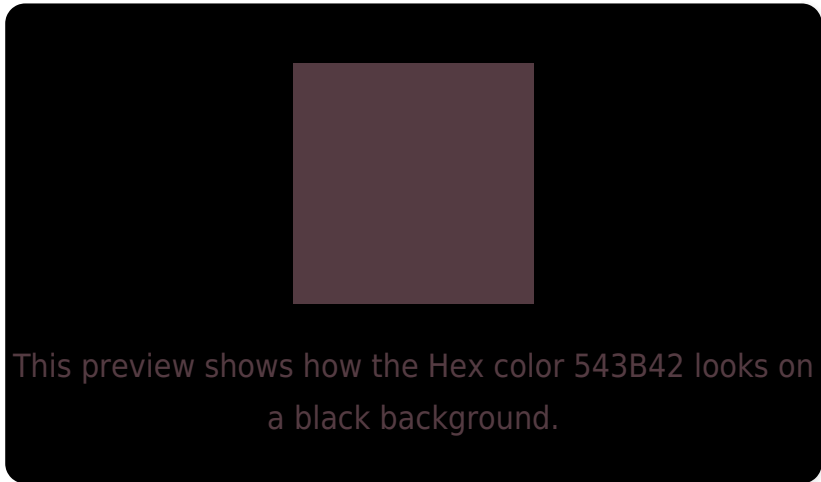
Large Text (above 18pt) WCAG AA ✓ Pass

Any Text WCAG AA ✓ Pass

Large Text (above 18pt) WCAG AAA ✓ Pass

Any Text WCAG AAA ✓ Pass

Black Background



Color Contrast Check

Large Text (above 18pt) WCAG AA × Fail

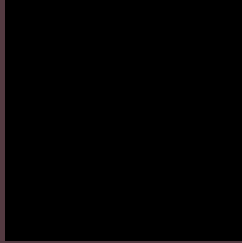
Any Text WCAG AA × Fail

Large Text (above 18pt) WCAG AAA × Fail

Any Text WCAG AAA × Fail

If you want to check with other color combinations, try the [Color Contrast Checker](#).

Hex 543B42 Background



This preview shows how black text looks on a background with the Hex color 543B42.



This preview shows how white text looks on a background with the Hex color 543B42.

Color Blindness Simulation

Color vision deficiency is a very complex topic, and I could not describe the different causes any better than Wikipedia does, so if you want to learn more, you should check out their [article about color blindness](#).

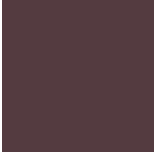
Dichromacy



Original Color
543B42

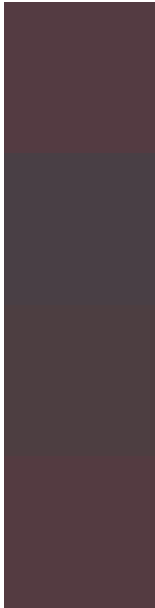
Protanopia
424246

Deuteranopia
494041



Tritanopia
543B40

Trichromacy



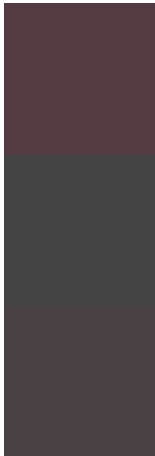
Original Color
543B42

Protanomaly
493F45

Deuteranomaly
4D3E41

Tritanomaly
543B41

Monochromacy



Original Color
543B42

Achromatopsia
434343

Achromatomaly
494043

CSS Examples

Text

The CSS property to change the color of the text to Hex 543B42 is called "color". The color property can be set on classes, ids or directly on the HTML element.

This example shows how text in the color #543B42 looks like.

```
.text, #text, p{  
    color:#543B42  
}
```

If you want to add a text shadow in that color use the text-shadow property, you can generate a text shadow directly with our [CSS Text Shadow Generator](#).

Here you see how black text with a 4 pixel #543B42 colored shadow looks like.

```
.shadow{ text-shadow: 4px 4px 2px #543B42
}
```

Border

The CSS property to change the border of an element to Hex 543B42 is called "border". The border property can be set on classes, ids or directly on the HTML element.

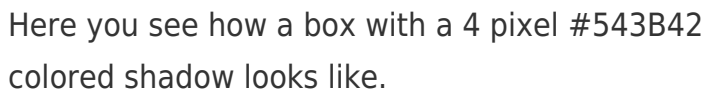
This example shows the color as border, it can be applied via the CSS property "border" or "border-color".

```
.border, #border, table{ border:4px solid
#543B42 }
```

If only the border color should be changed use the property `border-color`.

```
.border{ border-color:#543B42 }
```

If you want to add a box shadow in that color use:



Here you see how a box with a 4 pixel #543B42 colored shadow looks like.

```
.boxshadow{ -moz-box-shadow:4px 4px 4px  
4px #543B42; -webkit-box-shadow:4px 4px  
4px 4px #543B42; box-shadow:4px 4px 4px  
4px #543B42 }
```

Background

The CSS property to change the background color of an element to Hex 543B42 is called "background". The background property can be set on classes, ids or directly on the HTML element.

```
.background, #background, body{  
background:#543B42 }
```

If only the background color should be changed can be used:

```
.background{ background-color:#543B42 }
```

This example shows the color as background, it is applied via the CSS property "background".

To optimize and compress your CSS code, you can use our [online CSS compressor and optimizer](#) based on csstidy. If you want to create a linear or radial gradient as background or border, check our [CSS Gradient Generator](#).

Hey! You found this booklet interesting? Support Converting Colors with the new Membership Option!

The pro membership hides all ads, plus gives you double the colors in the color bucket, and more awesome pro features!

[Learn more, Memberships starting at \\$2.50/m!](#)

**Follow me
on Twitter!**

@ConvertingColor