

# Converting Colors

Hex(552318)

Have a look what the booklet for  
Hex(552318) contains.

<b>Hex(552318)</b> .....	3
<b><i>Conversions</i></b> .....	4
<b><i>Details</i></b> .....	6
<b><i>Harmonies</i></b> .....	11
<b><i>Previews</i></b> .....	23
<b><i>Color Blindness Simulation</i></b> .....	26
<b><i>CSS Examples</i></b> .....	29

**Color**

**Hex(552318)**

# Conversions

## Conversions Part 1

Format	Color
Hex	552318
RGB	85, 35, 24
RGB Percent	33%, 14%, 9%
CMY	0.6667, 0.8627, 0.9059
CMYK	0.00, 0.59, 0.72, 0.67
HSL	11°, 56%, 21%
HSV	11°, 72%, 33%
XYZ	4.5122, 3.1993, 1.2439
YIQ	48.6960, 33.3310, 7.1790

# Conversions

## Conversions Part 2

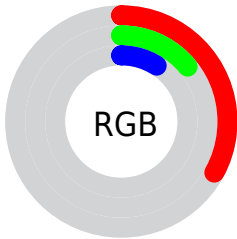
<b>Format</b>	<b>Color</b>
<b>RYB</b>	85, 37, 24
Decimal	5579544
CIELab	20.83, 22.32, 18.45
CIElCh	21, 28.954, 39.578
Yxy	3.1993, 0.5039, 0.3572
Android (android.graphics.Color)	4283769624 (0xFF552318)
YUV	48.6960, -12.1751, 31.8386
Hunter-Lab	17.8866, 13.7282, 8.3975

# Details

The Hex color **552318** is a dark color, and the websafe version is hex **663333**. A complement of this color would be **184A55**, and the grayscale version is **313131**.

A 20% lighter version of the original color is **8A5143**, and **260001** is the 20% darker color. If you saturate the color by 10%, you get **551C0F**, and if you desaturate by 10%, it is **552A20**.

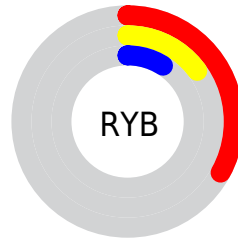
# Distribution



Red (33%)

Green (14%)

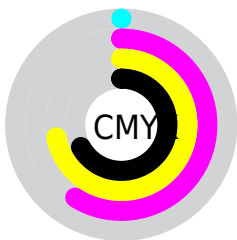
Blue (9%)



Red (33%)

Yellow (15%)

Blue (9%)

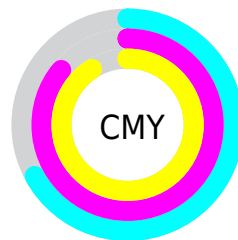


Cyan (0%)

Magenta (59%)

Yellow (72%)

Black (67%)



Cyan (67%)

Magenta (86%)

Yellow (91%)

# Brightness & Saturation Gradients

These gradients show how the Hex color 552318 changes by changing the brightness by 10 percent. The first figure shows a shift by +10% for each color and the second figure -10%.

Similar to the brightness gradients but the following saturation gradients show a change of the Hex color 552318 by changing the saturation by 10% instead.



 552318

 552318

 FFFFFB

 3C0D00

 8A5143

 260001

 A66A5B

 000000

 C28373

 DF9E8D

 FDB9A7

 FFD4C3

 FFF1DF

 552318

 552318

■ 551C0F

■ 552A20

■ 551507

■ 553129

■ 550F00

■ 553831

■ 553F3A

■ 554642

■ 554D4B

■ 555453

■ 555B5C

■ 556264

# Harmonies

## Analogous

The Analogous color harmony consists of three colors that are next to each other on the color wheel.



591E2C



552318



492C07

# Triad

The Triadic color harmony groups three colors that are evenly spaced from another and form a triangle on the color wheel.



552318



003B22



11325C

# Complementary

The Complementary color scheme is a pair of colors which are on the opposite of each other on the color wheel.



552318



184A55

# Split Complementary

Split-complementary colors differ from the complementary color scheme. The scheme consists of three colors, the original color and two neighbors of the complement color.



00385A



552318



003C39

# Square

The Square scheme is like the rectangle color scheme, but the four colors are evenly spaced on the color wheel.



552318



20380F



003B4D



3C2953

# Rectangle

The Rectangle color scheme consists of four colors that form a rectangle on the color wheel.



552318



3D3101



003B4D



00355D



# Sweetspot

The Sweet Spot groups the original color and five complimentary colors.



552318



6E5A56



55184B



382C2A



B8B8B8



383838



# Same Dimension

The Same Dimension uses a secret algorithm to generate beautiful new colors.



552318



6E200F



554118



2B2827



6B1300



EB2A00



# Inverse Universe

The Inverse Universe completely reimagines the original color for something new.



184A55



0F5D6E



182C55



272B2B



00586B

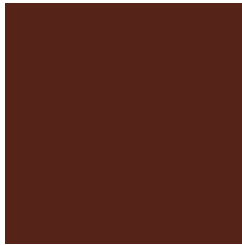


00C0EB



# Previews

## White Background



This preview shows how the Hex color 552318 looks on a white background.

## Color Contrast Check

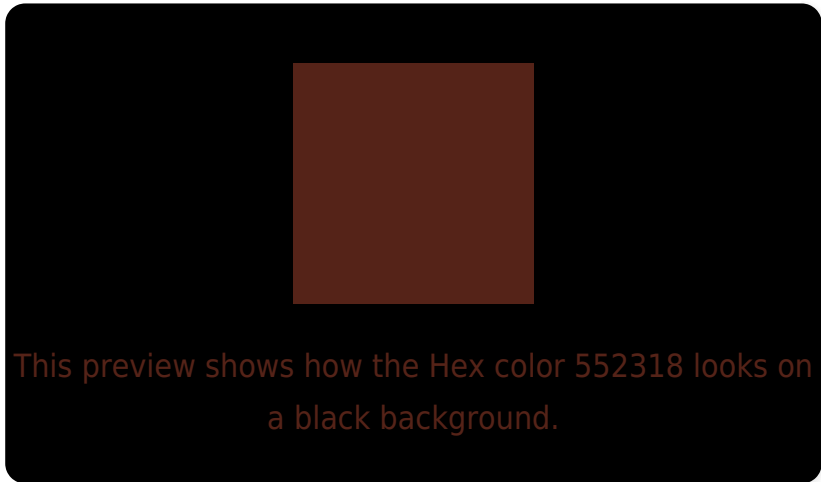
Large Text (above 18pt) WCAG AA ✓ Pass

Any Text WCAG AA ✓ Pass

Large Text (above 18pt) WCAG AAA ✓ Pass

Any Text WCAG AAA ✓ Pass

# Black Background



## Color Contrast Check

Large Text (above 18pt) WCAG AA × Fail

Any Text WCAG AA × Fail

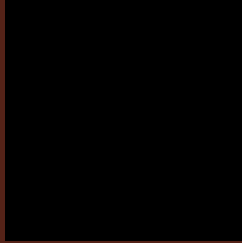
Large Text (above 18pt) WCAG AAA × Fail

Any Text WCAG AAA × Fail

If you want to check with other color combinations, try the [Color Contrast Checker](#).



## Hex 552318 Background



This preview shows how black text looks on a background with the Hex color 552318.

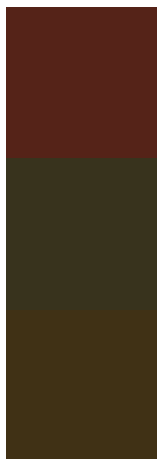


This preview shows how white text looks on a background with the Hex color 552318.

# Color Blindness Simulation

Color vision deficiency is a very complex topic, and I could not describe the different causes any better than Wikipedia does, so if you want to learn more, you should check out their [article about color blindness](#).

## Dichromacy



**Original Color**  
552318

**Protanopia**  
38331D

**Deuteranopia**  
403115



**Tritanopia**  
562224

# Trichromacy



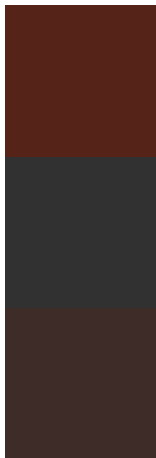
**Original Color**  
552318

**Protanomaly**  
432D1B

**Deuteranomaly**  
482C16

**Tritanomaly**  
562220

# Monochromacy



**Original Color**  
552318

**Achromatopsia**  
313131

**Achromatomaly**  
3E2C28

# CSS Examples

## Text

The CSS property to change the color of the text to Hex 552318 is called "color". The color property can be set on classes, ids or directly on the HTML element.

This example shows how text in the color #552318 looks like.

```
.text, #text, p{  
    color:#552318  
}
```

If you want to add a text shadow in that color use the text-shadow property, you can generate a text shadow directly with our [CSS Text Shadow Generator](#).

Here you see how black text with a 4 pixel #552318 colored shadow looks like.

```
.shadow{ text-shadow: 4px 4px 2px #552318
}
```

## Border

The CSS property to change the border of an element to Hex 552318 is called "border". The border property can be set on classes, ids or directly on the HTML element.

This example shows the color as border, it can be applied via the CSS property "border" or "border-color".

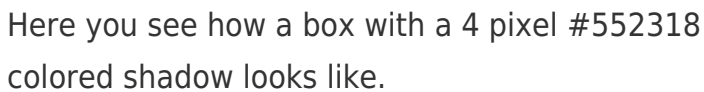
```
.border, #border, table{ border:4px solid
#552318 }
```

If only the border color should be changed use the property `border-color`.

```
.border{ border-color:#552318 }
```

If you want to add a box shadow in that color use:

Here you see how a box with a 4 pixel #552318 colored shadow looks like.



```
.boxshadow{ -moz-box-shadow:4px 4px 4px  
4px #552318; -webkit-box-shadow:4px 4px  
4px 4px #552318; box-shadow:4px 4px 4px  
4px #552318 }
```

# Background

The CSS property to change the background color of an element to Hex 552318 is called "background". The background property can be set on classes, ids or directly on the HTML element.

```
.background, #background, body{  
background:#552318 }
```

If only the background color should be changed can be used:

```
.background{ background-color:#552318 }
```

This example shows the color as background, it is applied via the CSS property "background".

To optimize and compress your CSS code, you can use our [online CSS compressor and optimizer](#) based on csstidy. If you want to create a linear or radial gradient as background or border, check our [CSS Gradient Generator](#).



# Hey! You found this booklet interesting? Support Converting Colors with the new Membership Option!

The pro membership hides all ads, plus gives you double the colors in the color bucket, and more awesome pro features!

**[Learn more, Memberships starting at \\$2.50/m!](#)**

**Follow me  
on Twitter!**

@ConvertingColor