

Converting Colors

Hex(552C2B)

Have a look what the booklet for
Hex(552C2B) contains.

Hex(552C2B)	3
<i>Conversions</i>	4
<i>Details</i>	6
<i>Harmonies</i>	11
<i>Previews</i>	23
<i>Color Blindness Simulation</i>	26
<i>CSS Examples</i>	29

Color

Hex(552C2B)

Conversions

Conversions Part 1

Format	Color
Hex	552C2B
RGB	85, 44, 43
RGB Percent	33%, 17%, 17%
CMY	0.6667, 0.8275, 0.8314
CMYK	0.00, 0.48, 0.49, 0.67
HSL	1°, 33%, 25%
HSV	1°, 49%, 33%
XYZ	5.0830, 3.9071, 2.7717
YIQ	56.1450, 24.7570, 8.3810

Conversions

Conversions Part 2

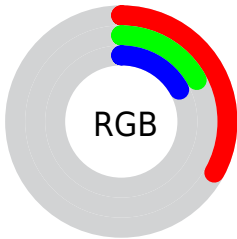
Format	Color
RYB	85, 44, 43
Decimal	5581867
CIELab	23.36, 18.72, 9.03
CIELCh	23, 20.781, 25.760
Yxy	3.9071, 0.4322, 0.3322
Android (android.graphics.Color)	4283771947 (0xFF552C2B)
YUV	56.1450, -6.4805, 25.3058
Hunter-Lab	19.7663, 11.3114, 5.5225

Details

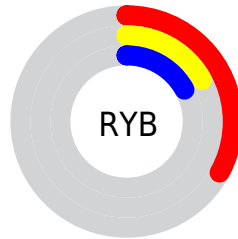
The Hex color **552C2B** is a dark color, and the websafe version is hex **663333**. A complement of this color would be **2B5455**, and the grayscale version is **383838**.

A 20% lighter version of the original color is **895B58**, and **270000** is the 20% darker color. If you saturate the color by 10%, you get **552423**, and if you desaturate by 10%, it is **553433**.

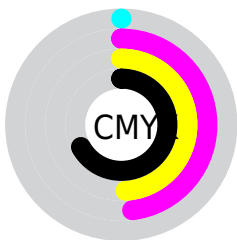
Distribution



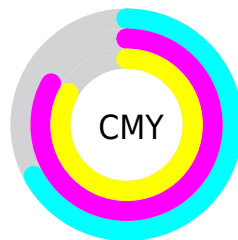
- Red (33%)
- Green (17%)
- Blue (17%)



- Red (33%)
- Yellow (17%)
- Blue (17%)



- Cyan (0%)
- Magenta (48%)
- Yellow (49%)
- Black (67%)



- Cyan (67%)
- Magenta (83%)
- Yellow (83%)

Brightness & Saturation Gradients

These gradients show how the Hex color 552C2B changes by changing the brightness by 10 percent. The first figure shows a shift by +10% for each color and the second figure -10%.

Similar to the brightness gradients but the following saturation gradients show a change of the Hex color 552C2B by changing the saturation by 10% instead.

 552C2B

 552C2B

FFFFFF

 3C1617

 895B58

 270000

 A47371

 000000

 BF8D8A

 DCA8A4

 F9C3C0

 FFDFDB

 FFFCF8

 552C2B

 552C2B

■ 552423

■ 553433

■ 551B1A

■ 553D3C

■ 551312

■ 554545

■ 550B09

■ 554D4D

■ 550301

■ 555556

■ 550200

■ 555E5E

■ 556666

■ 556E6F

■ 557777

Harmonies

Analogous

The Analogous color harmony consists of three colors that are next to each other on the color wheel.



532B3B



552C2B



4F301E

Triad

The Triadic color harmony groups three colors that are evenly spaced from another and form a triangle on the color wheel.



552C2B



213E26



193A56

Complementary

The Complementary color scheme is a pair of colors which are on the opposite of each other on the color wheel.



552C2B



2B5455

Split Complementary

Split-complementary colors differ from the complementary color scheme. The scheme consists of three colors, the original color and two neighbors of the complement color.



003E51



552C2B



054035

Square

The Square scheme is like the rectangle color scheme, but the four colors are evenly spaced on the color wheel.



552C2B



343B1B



004045



363454

Rectangle

The Rectangle color scheme consists of four colors that form a rectangle on the color wheel.



552C2B



483419



004045



0B3B56

Sweetspot

The Sweet Spot groups the original color and five complimentary colors.



552C2B



6E5E5D



552B54



382E2E



B8B8B8



383838

Same Dimension

The Same Dimension uses a secret algorithm to generate beautiful new colors.



552C2B



6E2E2D



55412B



2B2727



6B0300



EB0600

Inverse Universe

The Inverse Universe completely reimagines the original color for something new.



2B5455



2D6C6E



2B3F55



272B2B



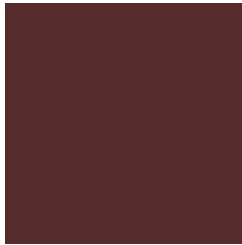
00696B



00E5EB

Previews

White Background



This preview shows how the Hex color 552C2B looks on a white background.

Color Contrast Check

Large Text (above 18pt) WCAG AA ✓ Pass

Any Text WCAG AA ✓ Pass

Large Text (above 18pt) WCAG AAA ✓ Pass

Any Text WCAG AAA ✓ Pass

Black Background



Color Contrast Check

Large Text (above 18pt) WCAG AA × Fail

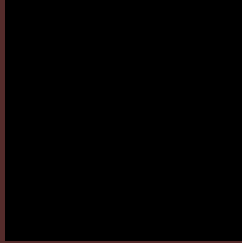
Any Text WCAG AA × Fail

Large Text (above 18pt) WCAG AAA × Fail

Any Text WCAG AAA × Fail

If you want to check with other color combinations, try the [Color Contrast Checker](#).

Hex 552C2B Background



This preview shows how black text looks on a background with the Hex color 552C2B.



This preview shows how white text looks on a background with the Hex color 552C2B.

Color Blindness Simulation

Color vision deficiency is a very complex topic, and I could not describe the different causes any better than Wikipedia does, so if you want to learn more, you should check out their [article about color blindness](#).

Dichromacy



Original Color
552C2B

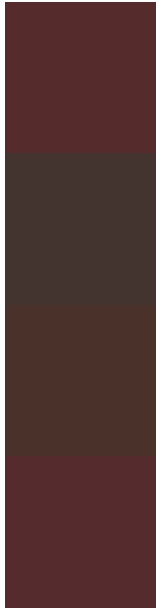
Protanopia
3B3831

Deuteranopia
433629



Tritanopia
552B2F

Trichromacy



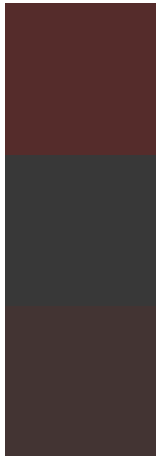
Original Color
552C2B

Protanomaly
44342F

Deuteranomaly
4A322A

Tritanomaly
552B2E

Monochromacy



Original Color
552C2B

Achromatopsia
383838

Achromatomaly
433433

CSS Examples

Text

The CSS property to change the color of the text to Hex 552C2B is called "color". The color property can be set on classes, ids or directly on the HTML element.

This example shows how text in the color #552C2B looks like.

```
.text, #text, p{  
    color:#552C2B  
}
```

If you want to add a text shadow in that color use the text-shadow property, you can generate a text shadow directly with our [CSS Text Shadow Generator](#).

Here you see how black text with a 4 pixel #552C2B colored shadow looks like.

```
.shadow{ text-shadow: 4px 4px 2px #552C2B
}
```

Border

The CSS property to change the border of an element to Hex 552C2B is called "border". The border property can be set on classes, ids or directly on the HTML element.

This example shows the color as border, it can be applied via the CSS property "border" or "border-color".

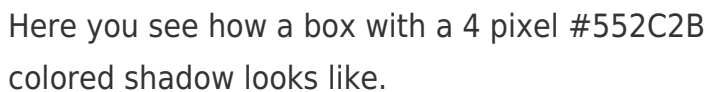
```
.border, #border, table{ border:4px solid
#552C2B }
```

If only the border color should be changed use the property `border-color`.

```
.border{ border-color:#552C2B }
```

If you want to add a box shadow in that color use:

Here you see how a box with a 4 pixel #552C2B colored shadow looks like.

A rectangular box with a dark red border and a dark red shadow. The box is white with a thin dark red border on the top and left sides, and a thicker dark red shadow on the bottom and right sides.

```
.boxshadow{ -moz-box-shadow:4px 4px 4px  
4px #552C2B; -webkit-box-shadow:4px 4px  
4px 4px #552C2B; box-shadow:4px 4px 4px  
4px #552C2B }
```

Background

The CSS property to change the background color of an element to Hex 552C2B is called "background". The background property can be set on classes, ids or directly on the HTML element.

```
.background, #background, body{  
background:#552C2B }
```

If only the background color should be changed can be used:

```
.background{ background-color:#552C2B }
```

This example shows the color as background, it is applied via the CSS property "background".

To optimize and compress your CSS code, you can use our [online CSS compressor and optimizer](#) based on csstidy. If you want to create a linear or radial gradient as background or border, check our [CSS Gradient Generator](#).

Hey! You found this booklet interesting? Support Converting Colors with the new Membership Option!

The pro membership hides all ads, plus gives you double the colors in the color bucket, and more awesome pro features!

[Learn more, Memberships starting at \\$2.50/m!](#)

**Follow me
on Twitter!**

@ConvertingColor