

# Converting Colors

Hex(56385F)

Have a look what the booklet for  
Hex(56385F) contains.

<b>Hex(56385F)</b> .....	3
<b><i>Conversions</i></b> .....	4
<b><i>Details</i></b> .....	6
<b><i>Harmonies</i></b> .....	11
<b><i>Previews</i></b> .....	23
<b><i>Color Blindness Simulation</i></b> .....	26
<b><i>CSS Examples</i></b> .....	29

# Color

**Hex(56385F)**

# Conversions

## Conversions Part 1

<b>Format</b>	<b>Color</b>
Hex	56385F
RGB	86, 56, 95
RGB Percent	34%, 22%, 37%
CMY	0.6627, 0.7804, 0.6275
CMYK	0.09, 0.41, 0.00, 0.63
HSL	286°, 26%, 30%
HSV	286°, 41%, 37%
XYZ	7.3175, 5.6330, 11.5281
YIQ	69.4160, 5.3610, 18.4890

# Conversions

## Conversions Part 2

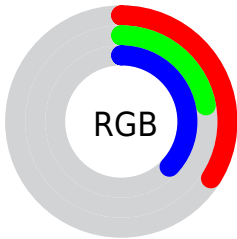
<b>Format</b>	<b>Color</b>
<b>R<sub>YB</sub></b>	86, 56, 95
Decimal	5650527
CIE <sub>Lab</sub>	28.47, 21.04, -17.95
CIE <sub>LCh</sub>	28, 27.653, 319.530
Yxy	5.6330, 0.2989, 0.2301
Android (android.graphics.Color)	4283840607 (0xFF56385F)
YUV	69.4160, 12.6129, 14.5442
Hunter-Lab	23.7339, 13.4994, -12.1846

# Details

The Hex color **56385F** is a dark color, and the websafe version is hex **663366**. A complement of this color would be **415F38**, and the grayscale version is **454545**.

A 20% lighter version of the original color is **896892**, and **270D31** is the 20% darker color. If you saturate the color by 10%, you get **542F5F**, and if you desaturate by 10%, it is **58425F**.

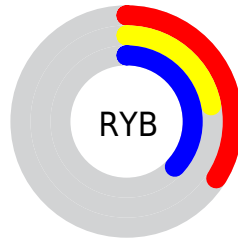
# Distribution



Red (34%)

Green (22%)

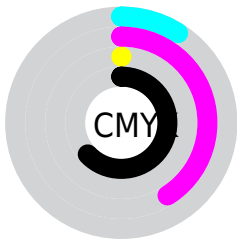
Blue (37%)



Red (34%)

Yellow (22%)

Blue (37%)

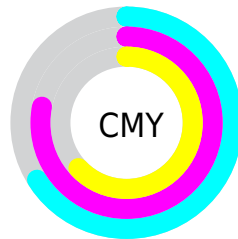


Cyan (9%)

Magenta (41%)

Yellow (0%)

Black (63%)



Cyan (66%)

Magenta (78%)

Yellow (63%)

# Brightness & Saturation Gradients

These gradients show how the Hex color 56385F changes by changing the brightness by 10 percent. The first figure shows a shift by +10% for each color and the second figure -10%.

Similar to the brightness gradients but the following saturation gradients show a change of the Hex color 56385F by changing the saturation by 10% instead.



■ 56385F

■ 56385F

FFFFFF

■ 3E2247

■ 896892

■ 270D31

■ A381AC

■ 12001C

■ BE9BC8

■ 000000

■ DAB6E4

■ F7D2FF

■ FFEEFF

■ 56385F

■ 56385F

■ 542F5F

■ 58425F

52255F

5A4B5F

4F1C5F

5D555F

4D125F

5F5E5F

4B085F

61685F

49005F

63715F

657B5F

68845F

6A8E5F

# Harmonies

## Analogous

The Analogous color harmony consists of three colors that are next to each other on the color wheel.



38406B



56385F



67324C

# Triad

The Triadic color harmony groups three colors that are evenly spaced from another and form a triangle on the color wheel.



56385F



563F18



004E51

# Complementary

The Complementary color scheme is a pair of colors which are on the opposite of each other on the color wheel.



56385F



415F38

# Split Complementary

Split-complementary colors differ from the complementary color scheme. The scheme consists of three colors, the original color and two neighbors of the complement color.



004D3B



56385F



424619

# Square

The Square scheme is like the rectangle color scheme, but the four colors are evenly spaced on the color wheel.



56385F



643723



294B26



004C63

# Rectangle

The Rectangle color scheme consists of four colors that form a rectangle on the color wheel.



56385F



6B313D



294B26



004E49



# Sweetspot

The Sweet Spot groups the original color and five complimentary colors.



56385F



776C7A



38415F



3B353D



BDBDBD



3D3D3D



# Same Dimension

The Same Dimension uses a secret algorithm to generate beautiful new colors.



56385F



6D3E7A



5F3855



2F2C30



560070



B800F0



# Inverse Universe

The Inverse Universe completely reimagines the original color for something new.



5F3841



7A3E4C



385F42



302C2D



70001A



F00037



# Previews

## White Background



This preview shows how the Hex color 56385F looks on a white background.

## Color Contrast Check

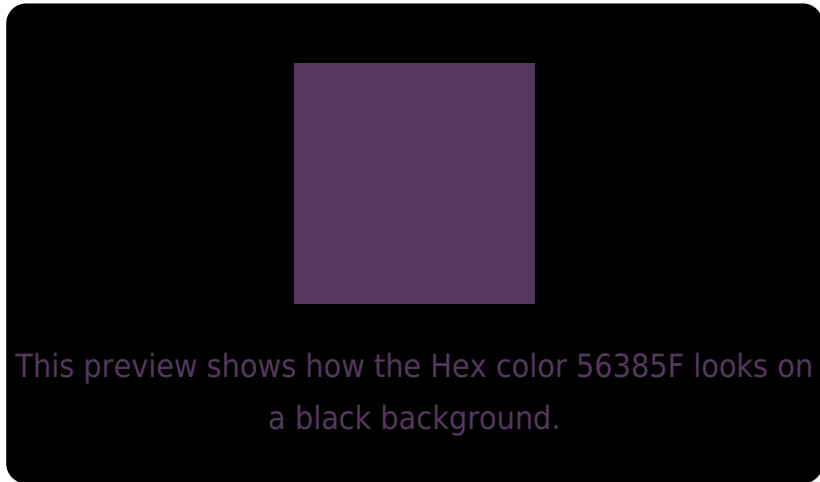
Large Text (above 18pt) WCAG AA ✓ Pass

Any Text WCAG AA ✓ Pass

Large Text (above 18pt) WCAG AAA ✓ Pass

Any Text WCAG AAA ✓ Pass

# Black Background



## Color Contrast Check

Large Text (above 18pt) WCAG AA × Fail

Any Text WCAG AA × Fail

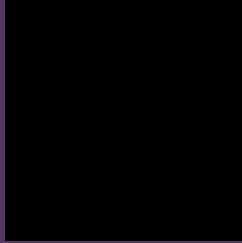
Large Text (above 18pt) WCAG AAA × Fail

Any Text WCAG AAA × Fail

If you want to check with other color combinations, try the [Color Contrast Checker](#).



## Hex 56385F Background



This preview shows how black text looks on a background with the Hex color 56385F.



This preview shows how white text looks on a background with the Hex color 56385F.

# Color Blindness Simulation

Color vision deficiency is a very complex topic, and I could not describe the different causes any better than Wikipedia does, so if you want to learn more, you should check out their [article about color blindness](#).

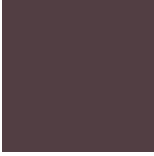
## Dichromacy



**Original Color**  
56385F

**Protanopia**  
364267

**Deuteranopia**  
3B435D



**Tritanopia**  
523E43

# Trichromacy



**Original Color**  
56385F

**Protanomaly**  
423E64

**Deuteranomaly**  
453F5E

**Tritanomaly**  
533C4D

# Monochromacy



**Original Color**  
56385F

**Achromatopsia**  
454545

**Achromatomaly**  
4B404E

# CSS Examples

## Text

The CSS property to change the color of the text to Hex 56385F is called "color". The color property can be set on classes, ids or directly on the HTML element.

This example shows how text in the color #56385F looks like.

```
.text, #text, p{  
    color:#56385F  
}
```

If you want to add a text shadow in that color use the text-shadow property, you can generate a text shadow directly with our [CSS Text Shadow Generator](#).

Here you see how black text with a 4 pixel #56385F colored shadow looks like.

```
.shadow{ text-shadow: 4px 4px 2px #56385F
}
```

## Border

The CSS property to change the border of an element to Hex 56385F is called "border". The border property can be set on classes, ids or directly on the HTML element.

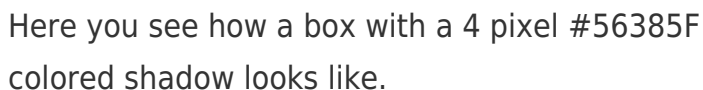
This example shows the color as border, it can be applied via the CSS property "border" or "border-color".

```
.border, #border, table{ border:4px solid
#56385F }
```

If only the border color should be changed use the property `border-color`.

```
.border{ border-color:#56385F }
```

If you want to add a box shadow in that color use:



Here you see how a box with a 4 pixel #56385F colored shadow looks like.

```
.boxshadow{ -moz-box-shadow:4px 4px 4px  
4px #56385F; -webkit-box-shadow:4px 4px  
4px 4px #56385F; box-shadow:4px 4px 4px  
4px #56385F }
```

# Background

The CSS property to change the background color of an element to Hex 56385F is called "background". The background property can be set on classes, ids or directly on the HTML element.

```
.background, #background, body{  
background:#56385F }
```

If only the background color should be changed can be used:

```
.background{ background-color:#56385F }
```

This example shows the color as background, it is applied via the CSS property "background".

To optimize and compress your CSS code, you can use our [online CSS compressor and optimizer](#) based on csstidy. If you want to create a linear or radial gradient as background or border, check our [CSS Gradient Generator](#).



Hey! You found this booklet  
interesting? Support Converting  
Colors with the new Membership  
Option!

The pro membership hides all ads, plus gives you  
double the colors in the color bucket, and more  
awesome pro features!

**[Learn more, Memberships starting at \\$2.50/m!](#)**

**Follow me  
on Twitter!**

@ConvertingColor