

Converting Colors

Hex(56395A)

Have a look what the booklet for
Hex(56395A) contains.

Hex(56395A)	3
<i>Conversions</i>	4
<i>Details</i>	6
<i>Harmonies</i>	11
<i>Previews</i>	23
<i>Color Blindness Simulation</i>	26
<i>CSS Examples</i>	29

Color

Hex(56395A)

Conversions

Conversions Part 1

Format	Color
Hex	56395A
RGB	86, 57, 90
RGB Percent	34%, 22%, 35%
CMY	0.6627, 0.7765, 0.6471
CMYK	0.04, 0.37, 0.00, 0.65
HSL	293°, 22%, 29%
HSV	293°, 37%, 35%
XYZ	7.1463, 5.6429, 10.3854
YIQ	69.4330, 6.6910, 16.4110

Conversions

Conversions Part 2

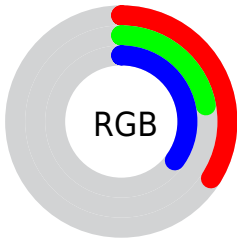
Format	Color
R_{YB}	86, 57, 90
Decimal	5650778
CIE Lab	28.49, 19.25, -14.67
CIE LCh	28, 24.204, 322.699
Yxy	5.6429, 0.3084, 0.2435
Android (android.graphics.Color)	4283840858 (0xFF56395A)
YUV	69.4330, 10.1395, 14.5293
Hunter-Lab	23.7547, 12.1289, -9.2928

Details

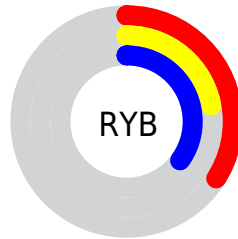
The Hex color **56395A** is a dark color, and the websafe version is hex **663366**. A complement of this color would be **3D5A39**, and the grayscale version is **454545**.

A 20% lighter version of the original color is **88698C**, and **280E2C** is the 20% darker color. If you saturate the color by 10%, you get **55305A**, and if you desaturate by 10%, it is **57425A**.

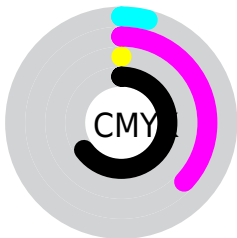
Distribution



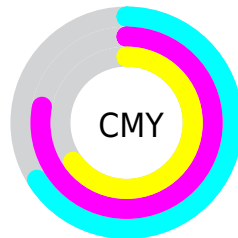
- Red (34%)
- Green (22%)
- Blue (35%)



- Red (34%)
- Yellow (22%)
- Blue (35%)



- Cyan (4%)
- Magenta (37%)
- Yellow (0%)
- Black (65%)



- Cyan (66%)
- Magenta (78%)
- Yellow (65%)

Brightness & Saturation Gradients

These gradients show how the Hex color 56395A changes by changing the brightness by 10 percent. The first figure shows a shift by +10% for each color and the second figure -10%.

Similar to the brightness gradients but the following saturation gradients show a change of the Hex color 56395A by changing the saturation by 10% instead.

■ 56395A

■ 56395A

FFFFFF

■ 3E2342

■ 88698C

■ 280E2C

■ A382A7

■ 120018

■ BE9CC2

■ 000000

■ DAB7DE

■ F7D3FA

■ FFEFFF

■ 56395A

■ 56395A

■ 55305A

■ 57425A

■ 54275A

■ 584B5A

■ 531E5A

■ 59545A

■ 52155A

■ 5A5D5A

■ 510C5A

■ 5B665A

■ 4F035A

■ 5D6F5A

■ 4F005A

■ 5E785A

■ 5F815A

■ 608A5A

Harmonies

Analogous

The Analogous color harmony consists of three colors that are next to each other on the color wheel.



3E4066



56395A



643449

Triad

The Triadic color harmony groups three colors that are evenly spaced from another and form a triangle on the color wheel.



56395A



53411E



004D51

Complementary

The Complementary color scheme is a pair of colors which are on the opposite of each other on the color wheel.



56395A



3D5A39

Split Complementary

Split-complementary colors differ from the complementary color scheme. The scheme consists of three colors, the original color and two neighbors of the complement color.



084D3E



56395A



404620

Square

The Square scheme is like the rectangle color scheme, but the four colors are evenly spaced on the color wheel.



56395A



603A26



2A4A2C



004B60

Rectangle

The Rectangle color scheme consists of four colors that form a rectangle on the color wheel.



56395A



67343C



2A4A2C



004D4B

Sweetspot

The Sweet Spot groups the original color and five complimentary colors.



56395A



746875



393D5A



3A333B



BABABA



3B3B3B

Same Dimension

The Same Dimension uses a secret algorithm to generate beautiful new colors.



56395A



6F4275



5A394E



2D292E



60006E



D000ED

Inverse Universe

The Inverse Universe completely reimagines the original color for something new.



5A393D



754248



395A45



2E292A



6E000D



ED001D

Previews

White Background



This preview shows how the Hex color 56395A looks on a white background.

Color Contrast Check

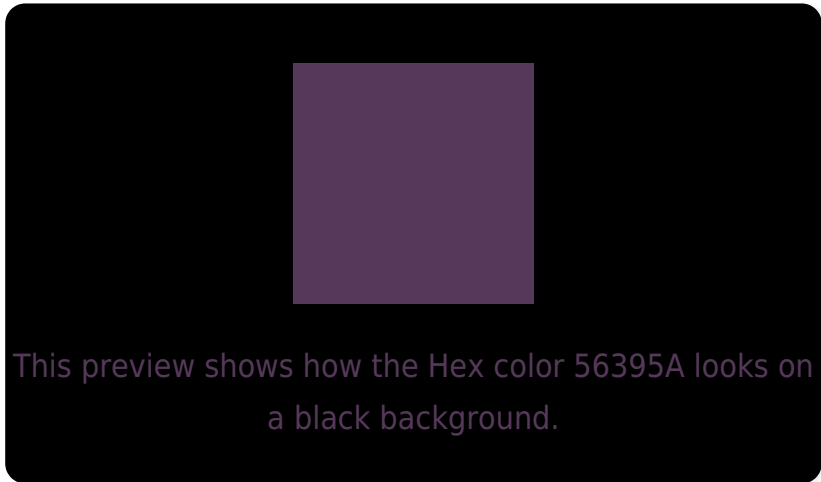
Large Text (above 18pt) WCAG AA ✓ Pass

Any Text WCAG AA ✓ Pass

Large Text (above 18pt) WCAG AAA ✓ Pass

Any Text WCAG AAA ✓ Pass

Black Background



Color Contrast Check

Large Text (above 18pt) WCAG AA × Fail

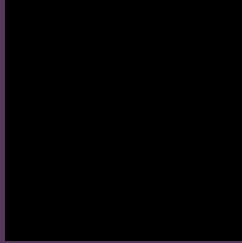
Any Text WCAG AA × Fail

Large Text (above 18pt) WCAG AAA × Fail

Any Text WCAG AAA × Fail

If you want to check with other color combinations, try the [Color Contrast Checker](#).

Hex 56395A Background



This preview shows how black text looks on a background with the Hex color 56395A.



This preview shows how white text looks on a background with the Hex color 56395A.

Color Blindness Simulation

Color vision deficiency is a very complex topic, and I could not describe the different causes any better than Wikipedia does, so if you want to learn more, you should check out their [article about color blindness](#).

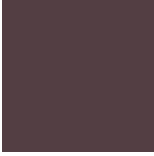
Dichromacy



Original Color
56395A

Protanopia
3A4261

Deuteranopia
3F4258



Tritanopia
533E43

Trichromacy



Original Color

56395A

Protanomaly

443F5E

Deuteranomaly

473F59

Tritanomaly

543C4B

Monochromacy



Original Color

56395A

Achromatopsia

454545

Achromatomaly

4B414D

CSS Examples

Text

The CSS property to change the color of the text to Hex 56395A is called "color". The color property can be set on classes, ids or directly on the HTML element.

This example shows how text in the color #56395A looks like.

```
.text, #text, p{  
    color:#56395A  
}
```

If you want to add a text shadow in that color use the text-shadow property, you can generate a text shadow directly with our [CSS Text Shadow Generator](#).

Here you see how black text with a 4 pixel #56395A colored shadow looks like.

```
.shadow{ text-shadow: 4px 4px 2px #56395A
}
```

Border

The CSS property to change the border of an element to Hex 56395A is called "border". The border property can be set on classes, ids or directly on the HTML element.

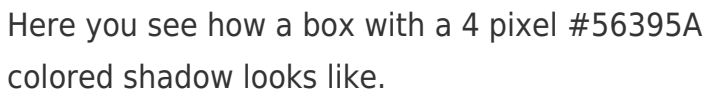
This example shows the color as border, it can be applied via the CSS property "border" or "border-color".

```
.border, #border, table{ border:4px solid
#56395A }
```

If only the border color should be changed use the property `border-color`.

```
.border{ border-color:#56395A }
```

If you want to add a box shadow in that color use:



Here you see how a box with a 4 pixel #56395A colored shadow looks like.

```
.boxshadow{ -moz-box-shadow:4px 4px 4px  
4px #56395A; -webkit-box-shadow:4px 4px  
4px 4px #56395A; box-shadow:4px 4px 4px  
4px #56395A }
```

Background

The CSS property to change the background color of an element to Hex 56395A is called "background". The background property can be set on classes, ids or directly on the HTML element.

```
.background, #background, body{  
background:#56395A }
```

If only the background color should be changed can be used:

```
.background{ background-color:#56395A }
```

This example shows the color as background, it is applied via the CSS property "background".

To optimize and compress your CSS code, you can use our [online CSS compressor and optimizer](#) based on csstidy. If you want to create a linear or radial gradient as background or border, check our [CSS Gradient Generator](#).

Hey! You found this booklet interesting? Support Converting Colors with the new Membership Option!

The pro membership hides all ads, plus gives you double the colors in the color bucket, and more awesome pro features!

[Learn more, Memberships starting at \\$2.50/m!](#)

**Follow me
on Twitter!**

@ConvertingColor