

Converting Colors

Hex(563A56)

Have a look what the booklet for
Hex(563A56) contains.

| | |
|--|----|
| Hex(563A56) | 3 |
| <i>Conversions</i> | 4 |
| <i>Details</i> | 6 |
| <i>Harmonies</i> | 11 |
| <i>Previews</i> | 23 |
| <i>Color Blindness Simulation</i> | 26 |
| <i>CSS Examples</i> | 29 |

Color

Hex(563A56)

Conversions

Conversions Part 1

| Format | Color |
|-------------|--------------------------|
| Hex | 563A56 |
| RGB | 86, 58, 86 |
| RGB Percent | 34%, 23%, 34% |
| CMY | 0.6627, 0.7725, 0.6627 |
| CMYK | 0.00, 0.33, 0.00, 0.66 |
| HSL | 300°, 19%, 28% |
| HSV | 300°, 33%, 34% |
| XYZ | 7.0305, 5.6764, 9.5292 |
| YIQ | 69.5640, 7.7000, 14.6440 |

Conversions

Conversions Part 2

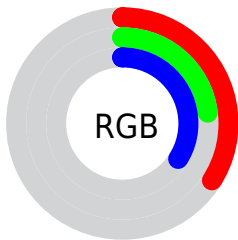
| Format | Color |
|-------------------------------------|------------------------------|
| R _Y B | 86, 58, 86 |
| Decimal | 5651030 |
| CIE Lab | 28.58, 17.73, -11.93 |
| CIE LCh | 29, 21.370, 326.056 |
| Yxy | 5.6764, 0.3162, 0.2553 |
| Android (android.graphics.Color) | 4283841110 (0xFF563A56) |
| YUV | 69.5640, 8.1029, 14.4144 |
| Hunter-Lab | 23.8253, 10.9788, -7.0361 |

Details

The Hex color **563A56** is a dark color, and the websafe version is hex **663366**. A complement of this color would be **3A563A**, and the grayscale version is **454545**.

A 20% lighter version of the original color is **886A88**, and **280F29** is the 20% darker color. If you saturate the color by 10%, you get **563156**, and if you desaturate by 10%, it is **564356**.

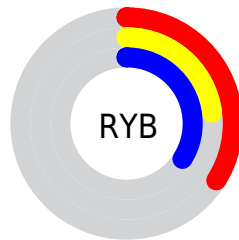
Distribution



Red (34%)

Green (23%)

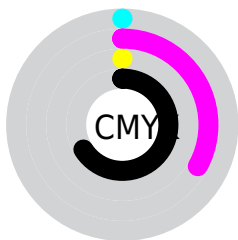
Blue (34%)



Red (34%)

Yellow (23%)

Blue (34%)

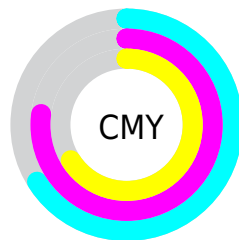


Cyan (0%)

Magenta (33%)

Yellow (0%)

Black (66%)



Cyan (66%)

Magenta (77%)

Yellow (66%)

Brightness & Saturation Gradients

These gradients show how the Hex color 563A56 changes by changing the brightness by 10 percent. The first figure shows a shift by +10% for each color and the second figure -10%.

Similar to the brightness gradients but the following saturation gradients show a change of the Hex color 563A56 by changing the saturation by 10% instead.

 563A56

 563A56

FFFFFF

 3E243F

 886A88

 280F29

 A383A2

 120014

 BE9DBD

 000000

 DAB8D9

 F6D4F5

 FFF0FF

 563A56

 563A56

 563156

 564356

■ 562956

■ 564B56

■ 562056

■ 565456

■ 561856

■ 565C56

■ 560F56

■ 566556

■ 560656

■ 566E56

■ 560056

■ 567656

■ 567F56

■ 568756

Harmonies

Analogous

The Analogous color harmony consists of three colors that are next to each other on the color wheel.



424061



563A56



613646

Triad

The Triadic color harmony groups three colors that are evenly spaced from another and form a triangle on the color wheel.



563A56



504222



004C51

Complementary

The Complementary color scheme is a pair of colors which are on the opposite of each other on the color wheel.



563A56



3A563A

Split Complementary

Split-complementary colors differ from the complementary color scheme. The scheme consists of three colors, the original color and two neighbors of the complement color.



134C41



563A56



3F4725

Square

The Square scheme is like the rectangle color scheme, but the four colors are evenly spaced on the color wheel.



563A56



5C3C29



2C4A30



004A5E

Rectangle

The Rectangle color scheme consists of four colors that form a rectangle on the color wheel.



563A56



63373B



2C4A30



004C4C

Sweetspot

The Sweet Spot groups the original color and five complimentary colors.



563A56



706570



3A3A56



383138



B8B8B8



383838

Same Dimension

The Same Dimension uses a secret algorithm to generate beautiful new colors.



563A56



704470



563A48



2B272B



6B006B



EB00EB

Inverse Universe

The Inverse Universe completely reimagines the original color for something new.



563A56



704470



3A5648



2B272B



6B006B



EB00EB

Previews

White Background



This preview shows how the Hex color 563A56 looks on a white background.

Color Contrast Check

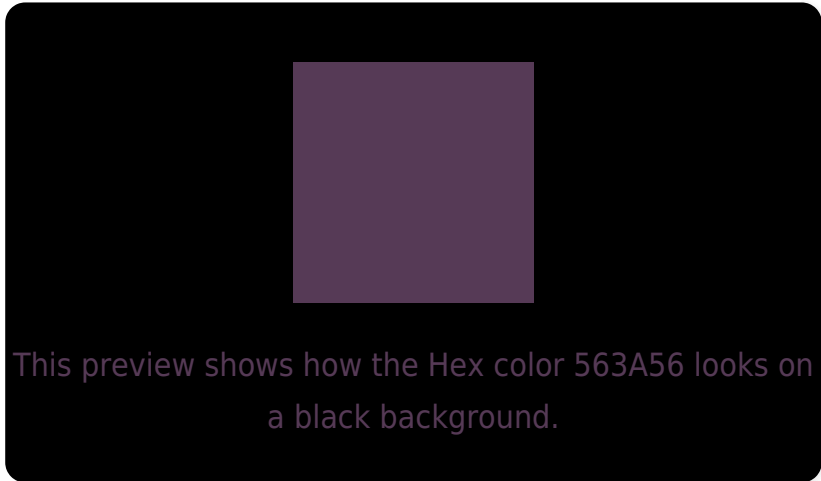
Large Text (above 18pt) WCAG AA ✓ Pass

Any Text WCAG AA ✓ Pass

Large Text (above 18pt) WCAG AAA ✓ Pass

Any Text WCAG AAA ✓ Pass

Black Background



Color Contrast Check

Large Text (above 18pt) WCAG AA × Fail

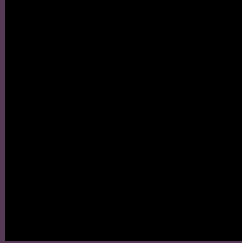
Any Text WCAG AA × Fail

Large Text (above 18pt) WCAG AAA × Fail

Any Text WCAG AAA × Fail

If you want to check with other color combinations, try the [Color Contrast Checker](#).

Hex 563A56 Background



This preview shows how black text looks on a background with the Hex color 563A56.



This preview shows how white text looks on a background with the Hex color 563A56.

Color Blindness Simulation

Color vision deficiency is a very complex topic, and I could not describe the different causes any better than Wikipedia does, so if you want to learn more, you should check out their [article about color blindness](#).

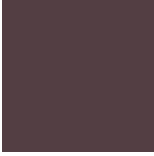
Dichromacy



Original Color
563A56

Protanopia
3C435D

Deuteranopia
424254



Tritanopia
533E43

Trichromacy



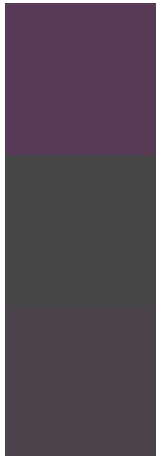
Original Color
563A56

Protanomaly
45405A

Deuteranomaly
493F55

Tritanomaly
543D4A

Monochromacy



Original Color
563A56

Achromatopsia
464646

Achromatomaly
4C424C

CSS Examples

Text

The CSS property to change the color of the text to Hex 563A56 is called "color". The color property can be set on classes, ids or directly on the HTML element.

This example shows how text in the color #563A56 looks like.

```
.text, #text, p{  
    color:#563A56  
}
```

If you want to add a text shadow in that color use the text-shadow property, you can generate a text shadow directly with our [CSS Text Shadow Generator](#).

Here you see how black text with a 4 pixel #563A56 colored shadow looks like.

```
.shadow{ text-shadow: 4px 4px 2px #563A56
}
```

Border

The CSS property to change the border of an element to Hex 563A56 is called "border". The border property can be set on classes, ids or directly on the HTML element.

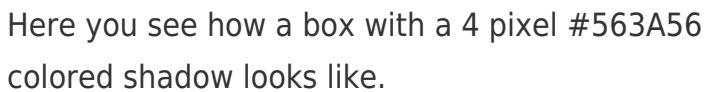
This example shows the color as border, it can be applied via the CSS property "border" or "border-color".

```
.border, #border, table{ border:4px solid
#563A56 }
```

If only the border color should be changed use the property `border-color`.

```
.border{ border-color:#563A56 }
```

If you want to add a box shadow in that color use:



Here you see how a box with a 4 pixel #563A56 colored shadow looks like.

```
.boxshadow{ -moz-box-shadow:4px 4px 4px  
4px #563A56; -webkit-box-shadow:4px 4px  
4px 4px #563A56; box-shadow:4px 4px 4px  
4px #563A56 }
```

Background

The CSS property to change the background color of an element to Hex 563A56 is called "background". The background property can be set on classes, ids or directly on the HTML element.

```
.background, #background, body{  
background:#563A56 }
```

If only the background color should be changed can be used:

```
.background{ background-color:#563A56 }
```

This example shows the color as background, it is applied via the CSS property "background".

To optimize and compress your CSS code, you can use our [online CSS compressor and optimizer](#) based on csstidy. If you want to create a linear or radial gradient as background or border, check our [CSS Gradient Generator](#).

Hey! You found this booklet interesting? Support Converting Colors with the new Membership Option!

The pro membership hides all ads, plus gives you double the colors in the color bucket, and more awesome pro features!

[Learn more, Memberships starting at \\$2.50/m!](#)

**Follow me
on Twitter!**

@ConvertingColor