

Converting Colors

Hex(564124)

Have a look what the booklet for
Hex(564124) contains.

Hex(564124)	3
<i>Conversions</i>	4
<i>Details</i>	6
<i>Harmonies</i>	11
<i>Previews</i>	23
<i>Color Blindness Simulation</i>	26
<i>CSS Examples</i>	29

Color

Hex(564124)

Conversions

Conversions Part 1

Format	Color
Hex	564124
RGB	86, 65, 36
RGB Percent	34%, 25%, 14%
CMY	0.6627, 0.7451, 0.8588
CMYK	0.00, 0.24, 0.58, 0.66
HSL	35°, 41%, 24%
HSV	35°, 58%, 34%
XYZ	6.0465, 5.8864, 2.4866
YIQ	67.9730, 21.8250, -4.5670

Conversions

Conversions Part 2

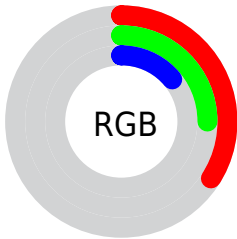
Format	Color
R_{YB}	72, 86, 36
Decimal	5652772
CIE _{Lab}	29.12, 5.10, 21.06
CIE _{LCh}	29, 21.666, 76.389
Yxy	5.8864, 0.4193, 0.4082
Android (android.graphics.Color)	4283842852 (0xFF564124)
YUV	67.9730, -15.7627, 15.8097
Hunter-Lab	24.2619, 2.0269, 10.9068

Details

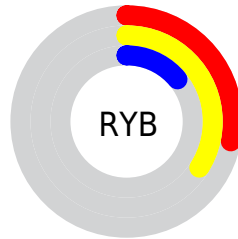
The Hex color **564124** is a dark color, and the websafe version is hex **333300**. A complement of this color would be **243956**, and the grayscale version is **444444**.

A 20% lighter version of the original color is **897151**, and **271700** is the 20% darker color. If you saturate the color by 10%, you get **563D1B**, and if you desaturate by 10%, it is **56452D**.

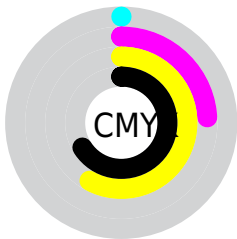
Distribution



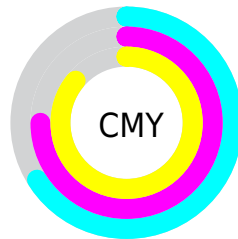
- Red (34%)
- Green (25%)
- Blue (14%)



- Red (28%)
- Yellow (34%)
- Blue (14%)



- Cyan (0%)
- Magenta (24%)
- Yellow (58%)
- Black (66%)



- Cyan (66%)
- Magenta (75%)
- Yellow (86%)

Brightness & Saturation Gradients

These gradients show how the Hex color 564124 changes by changing the brightness by 10 percent. The first figure shows a shift by +10% for each color and the second figure -10%.

Similar to the brightness gradients but the following saturation gradients show a change of the Hex color 564124 by changing the saturation by 10% instead.

 564124

 564124

FFFFFF

 3E2B0F

 897151

 271700

 A48A6A

 030000

 C0A483

 000000

 DCBF9D

 F9DBB8

 FFF8D4

 FFFFF0

 564124

 564124

■ 563D1B

■ 56452D

■ 563A13

■ 564835

■ 56360A

■ 564C3E

■ 563302

■ 564F46

■ 563200

■ 56534F

■ 565758

■ 565A60

■ 565E69

■ 566271

Harmonies

Analogous

The Analogous color harmony consists of three colors that are next to each other on the color wheel.



613B2D



564124



464724

Triad

The Triadic color harmony groups three colors that are evenly spaced from another and form a triangle on the color wheel.



564124



004D4E



523D5C

Complementary

The Complementary color scheme is a pair of colors which are on the opposite of each other on the color wheel.



564124



243956

Split Complementary

Split-complementary colors differ from the complementary color scheme. The scheme consists of three colors, the original color and two neighbors of the complement color.



3B4365



564124



004C5C

Square

The Square scheme is like the rectangle color scheme, but the four colors are evenly spaced on the color wheel.



564124



1D4D3C



1C4965



60384D

Rectangle

The Rectangle color scheme consists of four colors that form a rectangle on the color wheel.



564124



3A4929



1C4965



4B3F60

Sweetspot

The Sweet Spot groups the original color and five complimentary colors.



564124



70685D



56243A



38332D



B8B8B8



383838

Same Dimension

The Same Dimension uses a secret algorithm to generate beautiful new colors.



564124



704F22



535624



2B2A27



6B3E00



EB8800

Inverse Universe

The Inverse Universe completely reimagines the original color for something new.



243956



224370



272456



27292B



002D6B



0063EB

Previews

White Background



This preview shows how the Hex color 564124 looks on a white background.

Color Contrast Check

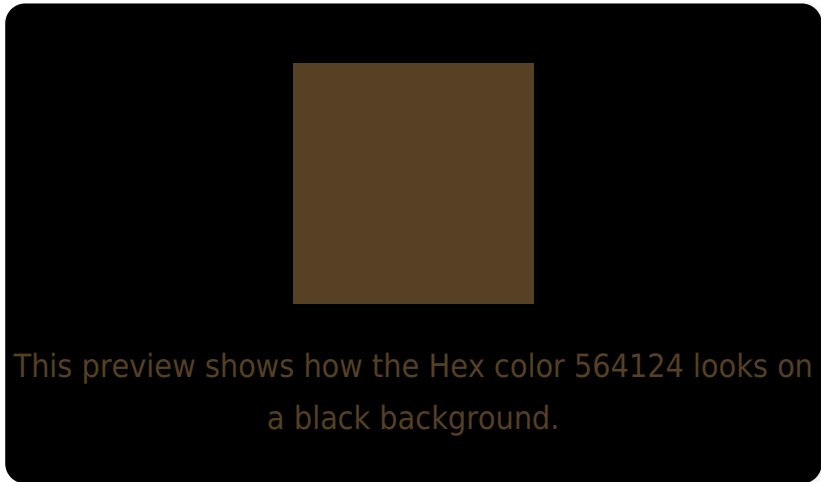
Large Text (above 18pt) WCAG AA ✓ Pass

Any Text WCAG AA ✓ Pass

Large Text (above 18pt) WCAG AAA ✓ Pass

Any Text WCAG AAA ✓ Pass

Black Background



Color Contrast Check

Large Text (above 18pt) WCAG AA × Fail

Any Text WCAG AA × Fail

Large Text (above 18pt) WCAG AAA × Fail

Any Text WCAG AAA × Fail

If you want to check with other color combinations, try the [Color Contrast Checker](#).

Hex 564124 Background



This preview shows how black text looks on a background with the Hex color 564124.

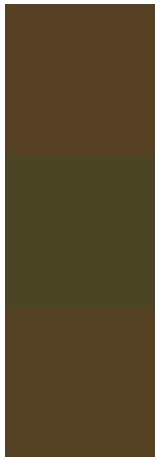


This preview shows how white text looks on a background with the Hex color 564124.

Color Blindness Simulation

Color vision deficiency is a very complex topic, and I could not describe the different causes any better than Wikipedia does, so if you want to learn more, you should check out their [article about color blindness](#).

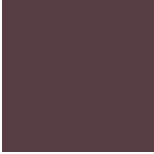
Dichromacy



Original Color
564124

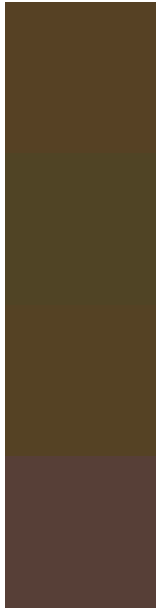
Protanopia
4C4525

Deuteranopia
554224



Tritanopia
583E42

Trichromacy



Original Color

564124

Protanomaly

504425

Deuteranomaly

554224

Tritanomaly

573F37

Monochromacy



Original Color

564124

Achromatopsia

444444

Achromatomaly

4B4338

CSS Examples

Text

The CSS property to change the color of the text to Hex 564124 is called "color". The color property can be set on classes, ids or directly on the HTML element.

This example shows how text in the color #564124 looks like.

```
.text, #text, p{  
    color:#564124  
}
```

If you want to add a text shadow in that color use the text-shadow property, you can generate a text shadow directly with our [CSS Text Shadow Generator](#).

Here you see how black text with a 4 pixel #564124 colored shadow looks like.

```
.shadow{ text-shadow: 4px 4px 2px #564124
}
```

Border

The CSS property to change the border of an element to Hex 564124 is called "border". The border property can be set on classes, ids or directly on the HTML element.

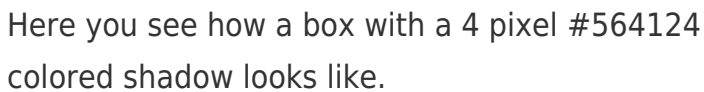
This example shows the color as border, it can be applied via the CSS property "border" or "border-color".

```
.border, #border, table{ border:4px solid
#564124 }
```

If only the border color should be changed use the property `border-color`.

```
.border{ border-color:#564124 }
```

If you want to add a box shadow in that color use:



Here you see how a box with a 4 pixel #564124 colored shadow looks like.

```
.boxshadow{ -moz-box-shadow:4px 4px 4px  
4px #564124; -webkit-box-shadow:4px 4px  
4px 4px #564124; box-shadow:4px 4px 4px  
4px #564124 }
```

Background

The CSS property to change the background color of an element to Hex 564124 is called "background". The background property can be set on classes, ids or directly on the HTML element.

```
.background, #background, body{  
background:#564124 }
```

If only the background color should be changed can be used:

```
.background{ background-color:#564124 }
```

This example shows the color as background, it is applied via the CSS property "background".

To optimize and compress your CSS code, you can use our [online CSS compressor and optimizer](#) based on csstidy. If you want to create a linear or radial gradient as background or border, check our [CSS Gradient Generator](#).

Hey! You found this booklet interesting? Support Converting Colors with the new Membership Option!

The pro membership hides all ads, plus gives you double the colors in the color bucket, and more awesome pro features!

[Learn more, Memberships starting at \\$2.50/m!](#)

**Follow me
on Twitter!**

@ConvertingColor