

# Converting Colors

Hex(56412E)

Have a look what the booklet for  
Hex(56412E) contains.

<b>Hex(56412E)</b> .....	3
<i><b>Conversions</b></i> .....	4
<i><b>Details</b></i> .....	6
<i><b>Harmonies</b></i> .....	11
<i><b>Previews</b></i> .....	23
<i><b>Color Blindness Simulation</b></i> .....	26
<i><b>CSS Examples</b></i> .....	29

# Color

**Hex(56412E)**

# Conversions

## Conversions Part 1

Format	Color
Hex	56412E
RGB	86, 65, 46
RGB Percent	34%, 25%, 18%
CMY	0.6627, 0.7451, 0.8196
CMYK	0.00, 0.24, 0.47, 0.66
HSL	28°, 30%, 26%
HSV	28°, 47%, 34%
XYZ	6.2212, 5.9563, 3.4066
YIQ	69.1130, 18.6150, -1.4570

# Conversions

## Conversions Part 2

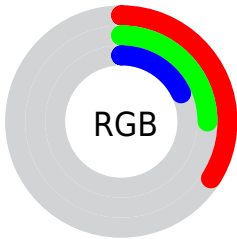
<b>Format</b>	<b>Color</b>
<a href="#">RYB</a>	<a href="#">86, 82, 46</a>
Decimal	<a href="#">5652782</a>
CIELab	<a href="#">29.30, 6.24, 15.09</a>
CIELCh	<a href="#">29, 16.324, 67.541</a>
Yxy	<a href="#">5.9563, 0.3992, 0.3822</a>
Android (android.graphics.Color)	<a href="#">4283842862</a> ( <a href="#">0xFF56412E</a> )
YUV	<a href="#">69.1130, -11.3947, 14.8099</a>
Hunter-Lab	<a href="#">24.4055, 2.7917, 8.8081</a>

# Details

The Hex color **56412E** is a dark color, and the websafe version is hex **663333**. A complement of this color would be **2E4356**, and the grayscale version is **454545**.

A 20% lighter version of the original color is **89715C**, and **281600** is the 20% darker color. If you saturate the color by 10%, you get **563C25**, and if you desaturate by 10%, it is **564637**.

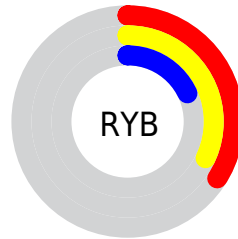
# Distribution



Red (34%)

Green (25%)

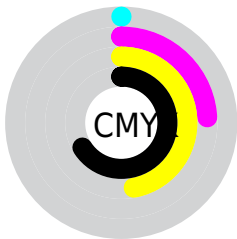
Blue (18%)



Red (34%)

Yellow (32%)

Blue (18%)

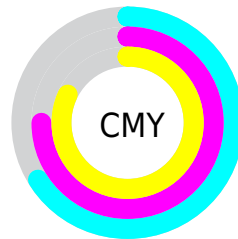


Cyan (0%)

Magenta (24%)

Yellow (47%)

Black (66%)



Cyan (66%)

Magenta (75%)

Yellow (82%)

# Brightness & Saturation Gradients

These gradients show how the Hex color 56412E changes by changing the brightness by 10 percent. The first figure shows a shift by +10% for each color and the second figure -10%.

Similar to the brightness gradients but the following saturation gradients show a change of the Hex color 56412E by changing the saturation by 10% instead.



 56412E

 56412E

FFFFFF

 3E2B19

 89715C

 281600

 A48A75

 080000

 BFA58E

 000000

 DBC0A9

 F8DBC4

 FFF8E0

 FFFFFD

 56412E

 56412E

■ 563C25

■ 564637

■ 56381D

■ 564A3F

■ 563314

■ 564F48

■ 562F0C

■ 565350

■ 562A03

■ 565859

■ 562900

■ 565C62

■ 56616A

■ 566573

■ 566A7B

# Harmonies

## Analogous

The Analogous color harmony consists of three colors that are next to each other on the color wheel.



5D3D36



56412E



4B452C

# Triad

The Triadic color harmony groups three colors that are evenly spaced from another and form a triangle on the color wheel.



56412E



214C48



4B4159

# Complementary

The Complementary color scheme is a pair of colors which are on the opposite of each other on the color wheel.



56412E



2E4356

# Split Complementary

Split-complementary colors differ from the complementary color scheme. The scheme consists of three colors, the original color and two neighbors of the complement color.



39455E



56412E



1C4B54

# Square

The Square scheme is like the rectangle color scheme, but the four colors are evenly spaced on the color wheel.



56412E



2E4B3B



27495C



583D4F

# Rectangle

The Rectangle color scheme consists of four colors that form a rectangle on the color wheel.



56412E



42482E



27495C



45425B



# Sweetspot

The Sweet Spot groups the original color and five complimentary colors.



56412E



706860



562E43



38332F



B8B8B8



383838



# Same Dimension

The Same Dimension uses a secret algorithm to generate beautiful new colors.



56412E



704F31



56552E



2B2927



6B3300



EB6F00



# Inverse Universe

The Inverse Universe completely reimagines the original color for something new.



2E4356



315270



2E2F56



27292B



00386B



007BEB



# Previews

## White Background



This preview shows how the Hex color 56412E looks on a white background.

## Color Contrast Check

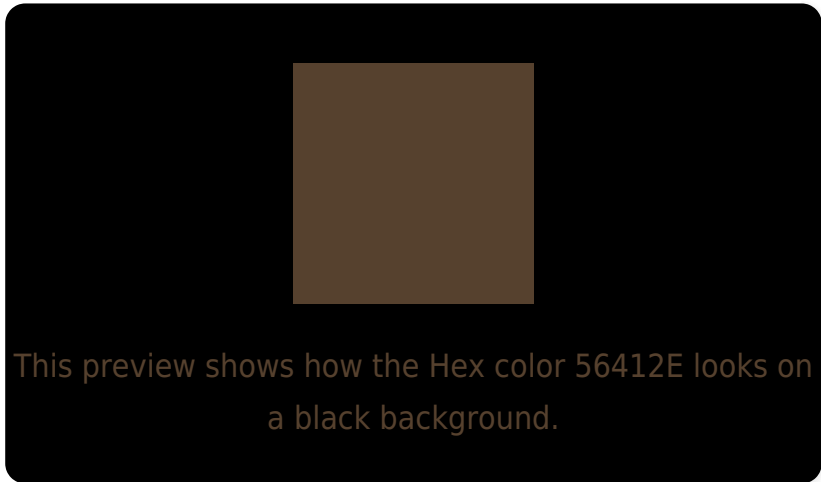
Large Text (above 18pt) WCAG AA ✓ Pass

Any Text WCAG AA ✓ Pass

Large Text (above 18pt) WCAG AAA ✓ Pass

Any Text WCAG AAA ✓ Pass

# Black Background



## Color Contrast Check

Large Text (above 18pt) WCAG AA × Fail

Any Text WCAG AA × Fail

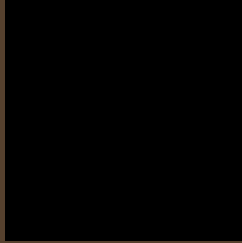
Large Text (above 18pt) WCAG AAA × Fail

Any Text WCAG AAA × Fail

If you want to check with other color combinations, try the [Color Contrast Checker](#).



## Hex 56412E Background



This preview shows how black text looks on a background with the Hex color 56412E.

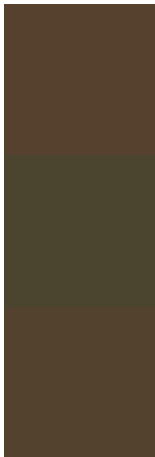


This preview shows how white text looks on a background with the Hex color 56412E.

# Color Blindness Simulation

Color vision deficiency is a very complex topic, and I could not describe the different causes any better than Wikipedia does, so if you want to learn more, you should check out their [article about color blindness](#).

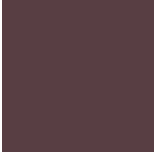
## Dichromacy



**Original Color**  
56412E

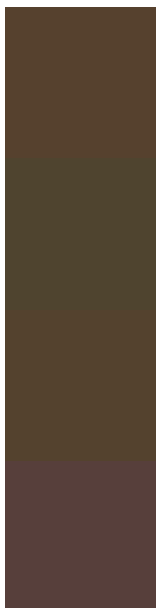
**Protanopia**  
4B4530

**Deuteranopia**  
53422E



**Tritanopia**  
583E43

# Trichromacy



**Original Color**

56412E

**Protanomaly**

4F442F

**Deuteranomaly**

54422E

**Tritanomaly**

573F3B

# Monochromacy



**Original Color**

56412E

**Achromatopsia**

454545

**Achromatomaly**

4B443D

# CSS Examples

## Text

The CSS property to change the color of the text to Hex 56412E is called "color". The color property can be set on classes, ids or directly on the HTML element.

This example shows how text in the color #56412E looks like.

```
.text, #text, p{  
    color:#56412E  
}
```

If you want to add a text shadow in that color use the text-shadow property, you can generate a text shadow directly with our [CSS Text Shadow Generator](#).

Here you see how black text with a 4 pixel #56412E colored shadow looks like.

```
.shadow{ text-shadow: 4px 4px 2px #56412E
}
```

## Border

The CSS property to change the border of an element to Hex 56412E is called "border". The border property can be set on classes, ids or directly on the HTML element.

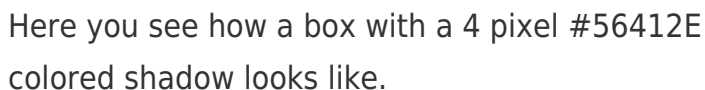
This example shows the color as border, it can be applied via the CSS property "border" or "border-color".

```
.border, #border, table{ border:4px solid
#56412E }
```

If only the border color should be changed use the property `border-color`.

```
.border{ border-color:#56412E }
```

If you want to add a box shadow in that color use:



Here you see how a box with a 4 pixel #56412E colored shadow looks like.

```
.boxshadow{ -moz-box-shadow:4px 4px 4px  
4px #56412E; -webkit-box-shadow:4px 4px  
4px 4px #56412E; box-shadow:4px 4px 4px  
4px #56412E }
```

# Background

The CSS property to change the background color of an element to Hex 56412E is called "background". The background property can be set on classes, ids or directly on the HTML element.

```
.background, #background, body{  
background:#56412E }
```

If only the background color should be changed can be used:

```
.background{ background-color:#56412E }
```

This example shows the color as background, it is applied via the CSS property "background".

To optimize and compress your CSS code, you can use our [online CSS compressor and optimizer](#) based on csstidy. If you want to create a linear or radial gradient as background or border, check our [CSS Gradient Generator](#).



Hey! You found this booklet interesting? Support Converting Colors with the new Membership Option!

The pro membership hides all ads, plus gives you double the colors in the color bucket, and more awesome pro features!

**[Learn more, Memberships starting at \\$2.50/m!](#)**

**Follow me  
on Twitter!**

@ConvertingColor