

Converting Colors

Hex(56432F)

Have a look what the booklet for
Hex(56432F) contains.

Hex(56432F)	3
<i>Conversions</i>	4
<i>Details</i>	6
<i>Harmonies</i>	11
<i>Previews</i>	23
<i>Color Blindness Simulation</i>	26
<i>CSS Examples</i>	29

Color

Hex(56432F)

Conversions

Conversions Part 1

Format	Color
Hex	56432F
RGB	86, 67, 47
RGB Percent	34%, 26%, 18%
CMY	0.6627, 0.7373, 0.8157
CMYK	0.00, 0.22, 0.45, 0.66
HSL	31°, 29%, 26%
HSV	31°, 45%, 34%
XYZ	6.3580, 6.1980, 3.5506
YIQ	70.4010, 17.7440, -2.1920

Conversions

Conversions Part 2

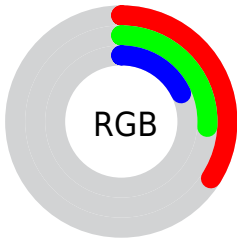
Format	Color
RYB	84, 86, 47
Decimal	5653295
CIELab	29.91, 5.10, 15.25
CIElCh	30, 16.082, 71.524
Yxy	6.1980, 0.3947, 0.3848
Android (android.graphics.Color)	4283843375 (0xFF56432F)
YUV	70.4010, -11.5367, 13.6803
Hunter-Lab	24.8957, 2.0187, 8.9713

Details

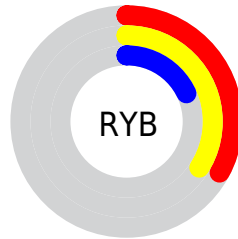
The Hex color **56432F** is a dark color, and the websafe version is hex **333333**. A complement of this color would be **2F4256**, and the grayscale version is **474747**.

A 20% lighter version of the original color is **89735D**, and **281800** is the 20% darker color. If you saturate the color by 10%, you get **563F26**, and if you desaturate by 10%, it is **564738**.

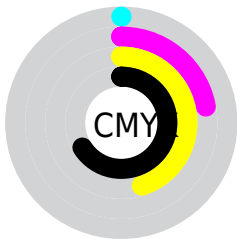
Distribution



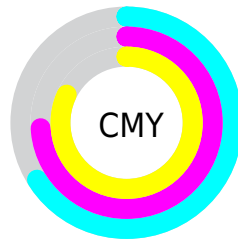
- Red (34%)
- Green (26%)
- Blue (18%)



- Red (33%)
- Yellow (34%)
- Blue (18%)



- Cyan (0%)
- Magenta (22%)
- Yellow (45%)
- Black (66%)



- Cyan (66%)
- Magenta (74%)
- Yellow (82%)

Brightness & Saturation Gradients

These gradients show how the Hex color 56432F changes by changing the brightness by 10 percent. The first figure shows a shift by +10% for each color and the second figure -10%.

Similar to the brightness gradients but the following saturation gradients show a change of the Hex color 56432F by changing the saturation by 10% instead.



56432F



56432F

FFFFFF



3E2D1A



89735D



281800



A38C76



0C0000



BFA790



000000



DBC2AA



F8DEC5



FFFAE1

FFFFFFE



56432F



56432F

■ 563F26

■ 564738

■ 563B1E

■ 564B40

■ 563615

■ 565049

■ 56320D

■ 565451

■ 562E04

■ 56585A

■ 562C00

■ 565C63

■ 56606B

■ 566574

■ 56697C

Harmonies

Analogous

The Analogous color harmony consists of three colors that are next to each other on the color wheel.



5E3F36



56432F



4A472E

Triad

The Triadic color harmony groups three colors that are evenly spaced from another and form a triangle on the color wheel.



56432F



224D4B



4E4259

Complementary

The Complementary color scheme is a pair of colors which are on the opposite of each other on the color wheel.



56432F



2F4256

Split Complementary

Split-complementary colors differ from the complementary color scheme. The scheme consists of three colors, the original color and two neighbors of the complement color.



3D465F



56432F



1F4C57

Square

The Square scheme is like the rectangle color scheme, but the four colors are evenly spaced on the color wheel.



56432F



2E4D3E



2B4A5E



5A3E4F

Rectangle

The Rectangle color scheme consists of four colors that form a rectangle on the color wheel.



56432F



414A31



2B4A5E



49435C

Sweetspot

The Sweet Spot groups the original color and five complimentary colors.



56432F



706960



562F43



38332F



B8B8B8



383838

Same Dimension

The Same Dimension uses a secret algorithm to generate beautiful new colors.



56432F



705334



56562F



2B2927



6B3700



EB7800

Inverse Universe

The Inverse Universe completely reimagines the original color for something new.



2F4256



345170



2F2F56



27292B



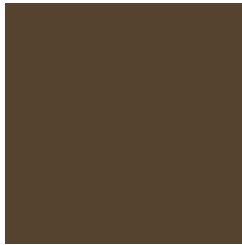
00346B



0072EB

Previews

White Background



This preview shows how the Hex color 56432F looks on a white background.

Color Contrast Check

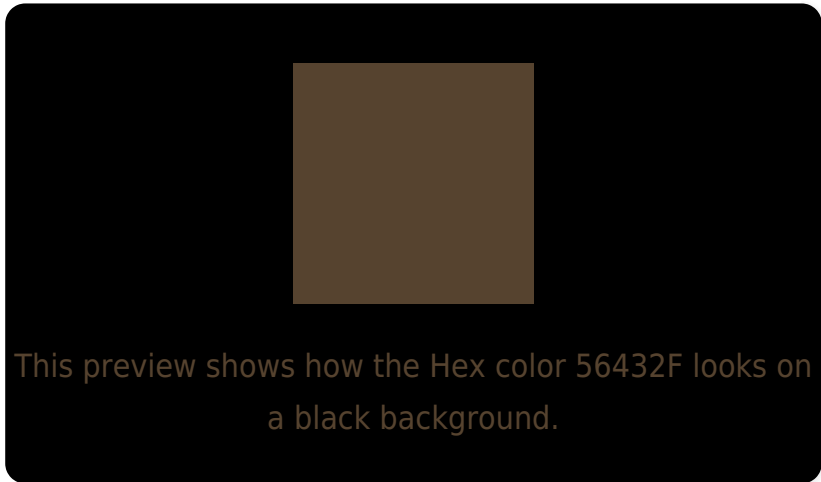
Large Text (above 18pt) WCAG AA ✓ Pass

Any Text WCAG AA ✓ Pass

Large Text (above 18pt) WCAG AAA ✓ Pass

Any Text WCAG AAA ✓ Pass

Black Background



Color Contrast Check

Large Text (above 18pt) WCAG AA × Fail

Any Text WCAG AA × Fail

Large Text (above 18pt) WCAG AAA × Fail

Any Text WCAG AAA × Fail

If you want to check with other color combinations, try the [Color Contrast Checker](#).

Hex 56432F Background



This preview shows how black text looks on a background with the Hex color 56432F.

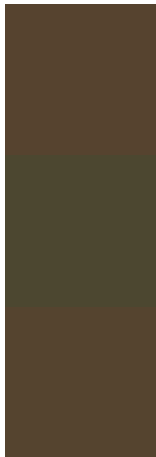


This preview shows how white text looks on a background with the Hex color 56432F.

Color Blindness Simulation

Color vision deficiency is a very complex topic, and I could not describe the different causes any better than Wikipedia does, so if you want to learn more, you should check out their [article about color blindness](#).


Dichromacy



Original Color
56432F

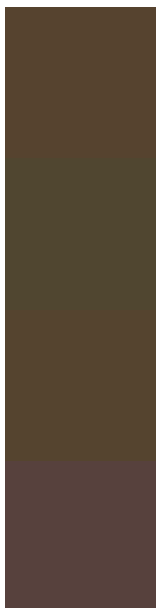
Protanopia
4C4730

Deuteranopia
55442F



Tritanopia
584045

Trichromacy



Original Color

56432F

Protanomaly

504630

Deuteranomaly

55442F

Tritanomaly

57413D

Monochromacy



Original Color

56432F

Achromatopsia

464646

Achromatomaly

4C453E

CSS Examples

Text

The CSS property to change the color of the text to Hex 56432F is called "color". The color property can be set on classes, ids or directly on the HTML element.

This example shows how text in the color #56432F looks like.

```
.text, #text, p{  
    color:#56432F  
}
```

If you want to add a text shadow in that color use the text-shadow property, you can generate a text shadow directly with our [CSS Text Shadow Generator](#).

Here you see how black text with a 4 pixel #56432F colored shadow looks like.

```
.shadow{ text-shadow: 4px 4px 2px #56432F
}
```

Border

The CSS property to change the border of an element to Hex 56432F is called "border". The border property can be set on classes, ids or directly on the HTML element.

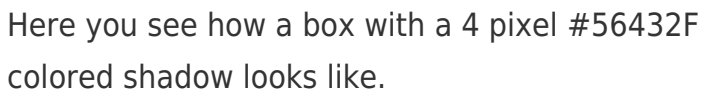
This example shows the color as border, it can be applied via the CSS property "border" or "border-color".

```
.border, #border, table{ border:4px solid
#56432F }
```

If only the border color should be changed use the property `border-color`.

```
.border{ border-color:#56432F }
```

If you want to add a box shadow in that color use:



Here you see how a box with a 4 pixel #56432F colored shadow looks like.

```
.boxshadow{ -moz-box-shadow:4px 4px 4px  
4px #56432F; -webkit-box-shadow:4px 4px  
4px 4px #56432F; box-shadow:4px 4px 4px  
4px #56432F }
```

Background

The CSS property to change the background color of an element to Hex 56432F is called "background". The background property can be set on classes, ids or directly on the HTML element.

```
.background, #background, body{  
background:#56432F }
```

If only the background color should be changed can be used:

```
.background{ background-color:#56432F }
```

This example shows the color as background, it is applied via the CSS property "background".

To optimize and compress your CSS code, you can use our [online CSS compressor and optimizer](#) based on csstidy. If you want to create a linear or radial gradient as background or border, check our [CSS Gradient Generator](#).

Hey! You found this booklet interesting? Support Converting Colors with the new Membership Option!

The pro membership hides all ads, plus gives you double the colors in the color bucket, and more awesome pro features!

[Learn more, Memberships starting at \\$2.50/m!](#)

**Follow me
on Twitter!**

@ConvertingColor