

# Converting Colors

Hex(564942)

Have a look what the booklet for  
Hex(564942) contains.

<b>Hex(564942)</b> .....	3
<i><b>Conversions</b></i> .....	4
<i><b>Details</b></i> .....	6
<i><b>Harmonies</b></i> .....	11
<i><b>Previews</b></i> .....	23
<i><b>Color Blindness Simulation</b></i> .....	26
<i><b>CSS Examples</b></i> .....	29

**Color**

**Hex(564942)**

# Conversions

## Conversions Part 1

<b>Format</b>	<b>Color</b>
Hex	564942
RGB	86, 73, 66
RGB Percent	34%, 29%, 26%
CMY	0.6627, 0.7137, 0.7412
CMYK	0.00, 0.15, 0.23, 0.66
HSL	21°, 13%, 30%
HSV	21°, 23%, 34%
XYZ	7.2037, 7.1369, 6.1521
YIQ	76.0890, 9.9950, 0.5790

# Conversions

## Conversions Part 2

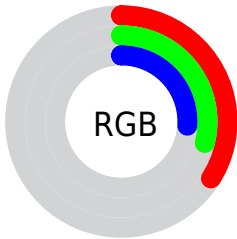
Format	Color
<a href="#">RYB</a>	<a href="#">86, 77, 66</a>
Decimal	<a href="#">5654850</a>
CIELab	<a href="#">32.12, 4.20, 6.21</a>
CIELCh	<a href="#">32, 7.499, 55.960</a>
Yxy	<a href="#">7.1369, 0.3515, 0.3483</a>
Android (android.graphics.Color)	<a href="#">4283844930</a> ( <a href="#">0xFF564942</a> )
YUV	<a href="#">76.0890, -4.9739, 8.6919</a>
Hunter-Lab	<a href="#">26.7149, 1.3813, 5.0466</a>

# Details

The Hex color **564942** is a dark color, and the websafe version is hex **333333**. A complement of this color would be **424F56**, and the grayscale version is **4C4C4C**.

A 20% lighter version of the original color is **887A72**, and **281D17** is the 20% darker color. If you saturate the color by 10%, you get **564339**, and if you desaturate by 10%, it is **564F4B**.

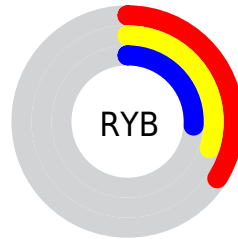
# Distribution



Red (34%)

Green (29%)

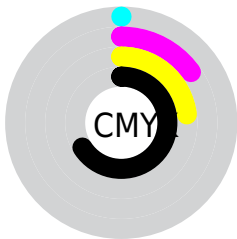
Blue (26%)



Red (34%)

Yellow (30%)

Blue (26%)

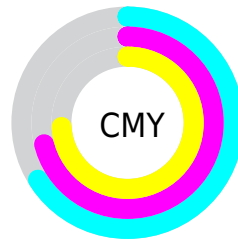


Cyan (0%)

Magenta (15%)

Yellow (23%)

Black (66%)



Cyan (66%)

Magenta (71%)

Yellow (74%)

# Brightness & Saturation Gradients

These gradients show how the Hex color 564942 changes by changing the brightness by 10 percent. The first figure shows a shift by +10% for each color and the second figure -10%.

Similar to the brightness gradients but the following saturation gradients show a change of the Hex color 564942 by changing the saturation by 10% instead.





564942



564942

FFFFFF



3F332C



887A72



281D17



A2938B



140400



BDAEA6



000000



D9C9C1



F6E5DD



FFFFF9



564942



564942



564339



564F4B

■ 563E31

■ 565453

■ 563828

■ 565A5C

■ 563320

■ 565F64

■ 562D17

■ 56656D

■ 56270E

■ 566B76

■ 562206

■ 56707E

■ 561E00

■ 567687

■ 567B8F

# Harmonies

## Analogous

The Analogous color harmony consists of three colors that are next to each other on the color wheel.



584847



564942



514B40

# Triad

The Triadic color harmony groups three colors that are evenly spaced from another and form a triangle on the color wheel.



564942



3F4F4A



4C4A56

# Complementary

The Complementary color scheme is a pair of colors which are on the opposite of each other on the color wheel.



564942



424F56

# Split Complementary

Split-complementary colors differ from the complementary color scheme. The scheme consists of three colors, the original color and two neighbors of the complement color.



444C57



564942



3C4F50

# Square

The Square scheme is like the rectangle color scheme, but the four colors are evenly spaced on the color wheel.



564942



444E45



3E4E55



534952

# Rectangle

The Rectangle color scheme consists of four colors that form a rectangle on the color wheel.



564942



4D4C40



3E4E55



494B57



# Sweetspot

The Sweet Spot groups the original color and five complimentary colors.



564942



706B68



56424F



383534



B8B8B8



383838



# Same Dimension

The Same Dimension uses a secret algorithm to generate beautiful new colors.



564942



705C51



565342



2B2927



6B2500



EB5200



# Inverse Universe

The Inverse Universe completely reimagines the original color for something new.



424F56



516570



424556



272A2B



00466B

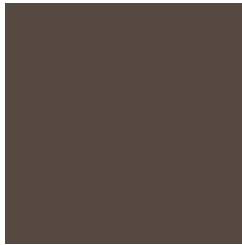


0098EB



# Previews

## White Background



This preview shows how the Hex color 564942 looks on a white background.

## Color Contrast Check

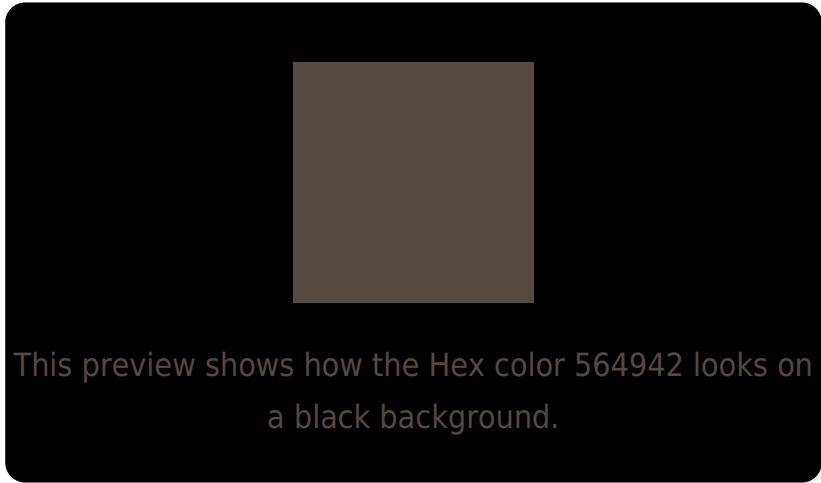
Large Text (above 18pt) WCAG AA ✓ Pass

Any Text WCAG AA ✓ Pass

Large Text (above 18pt) WCAG AAA ✓ Pass

Any Text WCAG AAA ✓ Pass

# Black Background



## Color Contrast Check

Large Text (above 18pt) WCAG AA × Fail

Any Text WCAG AA × Fail

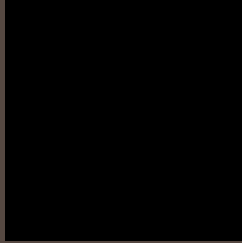
Large Text (above 18pt) WCAG AAA × Fail

Any Text WCAG AAA × Fail

If you want to check with other color combinations, try the [Color Contrast Checker](#).



## Hex 564942 Background



This preview shows how black text looks on a background with the Hex color 564942.



This preview shows how white text looks on a background with the Hex color 564942.

# Color Blindness Simulation

Color vision deficiency is a very complex topic, and I could not describe the different causes any better than Wikipedia does, so if you want to learn more, you should check out their [article about color blindness](#).

## Dichromacy



**Original Color**


564942

**Protanopia**

4F4B43

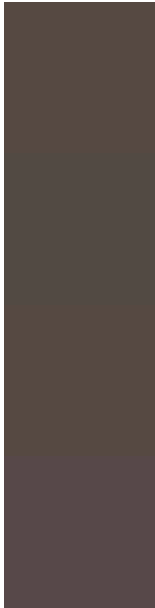
**Deuteranopia**

564942



**Tritanopia**  
57474D

# Trichromacy



**Original Color**

564942

**Protanomaly**

524A43

**Deuteranomaly**

564942

**Tritanomaly**

574849

# Monochromacy



**Original Color**

564942

**Achromatopsia**

4C4C4C

**Achromatomaly**

504B48

# CSS Examples

## Text

The CSS property to change the color of the text to Hex 564942 is called "color". The color property can be set on classes, ids or directly on the HTML element.

This example shows how text in the color #564942 looks like.

```
.text, #text, p{  
    color:#564942  
}
```

If you want to add a text shadow in that color use the text-shadow property, you can generate a text shadow directly with our [CSS Text Shadow Generator](#).

Here you see how black text with a 4 pixel #564942 colored shadow looks like.

```
.shadow{ text-shadow: 4px 4px 2px #564942
}
```

## Border

The CSS property to change the border of an element to Hex 564942 is called "border". The border property can be set on classes, ids or directly on the HTML element.

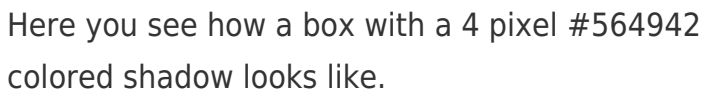
This example shows the color as border, it can be applied via the CSS property "border" or "border-color".

```
.border, #border, table{ border:4px solid
#564942 }
```

If only the border color should be changed use the property `border-color`.

```
.border{ border-color:#564942 }
```

If you want to add a box shadow in that color use:



Here you see how a box with a 4 pixel #564942 colored shadow looks like.

```
.boxshadow{ -moz-box-shadow:4px 4px 4px  
4px #564942; -webkit-box-shadow:4px 4px  
4px 4px #564942; box-shadow:4px 4px 4px  
4px #564942 }
```

# Background

The CSS property to change the background color of an element to Hex 564942 is called "background". The background property can be set on classes, ids or directly on the HTML element.

```
.background, #background, body{  
background:#564942 }
```

If only the background color should be changed can be used:

```
.background{ background-color:#564942 }
```

This example shows the color as background, it is applied via the CSS property "background".

To optimize and compress your CSS code, you can use our [online CSS compressor and optimizer](#) based on csstidy. If you want to create a linear or radial gradient as background or border, check our [CSS Gradient Generator](#).



Hey! You found this booklet interesting? Support Converting Colors with the new Membership Option!

The pro membership hides all ads, plus gives you double the colors in the color bucket, and more awesome pro features!

**[Learn more, Memberships starting at \\$2.50/m!](#)**

**Follow me  
on Twitter!**

@ConvertingColor