

Converting Colors

Hex(573D28)

Have a look what the booklet for
Hex(573D28) contains.

Hex(573D28)	3
<i>Conversions</i>	4
<i>Details</i>	6
<i>Harmonies</i>	11
<i>Previews</i>	23
<i>Color Blindness Simulation</i>	26
<i>CSS Examples</i>	29

Color

Hex(573D28)

Conversions

Conversions Part 1

Format	Color
Hex	573D28
RGB	87, 61, 40
RGB Percent	34%, 24%, 16%
CMY	0.6588, 0.7608, 0.8431
CMYK	0.00, 0.30, 0.54, 0.66
HSL	27°, 37%, 25%
HSV	27°, 54%, 34%
XYZ	5.9822, 5.5169, 2.7571
YIQ	66.3800, 22.2370, -1.0190

Conversions

Conversions Part 2

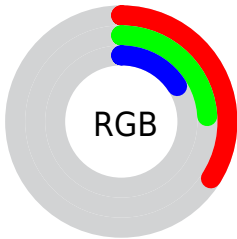
Format	Color
RYB	87, 78, 40
Decimal	5717288
CIELab	28.16, 8.55, 17.41
CIElCh	28, 19.392, 63.849
Yxy	5.5169, 0.4196, 0.3870
Android (android.graphics.Color)	4283907368 (0xFF573D28)
YUV	66.3800, -13.0053, 18.0837
Hunter-Lab	23.4881, 4.3582, 9.4822

Details

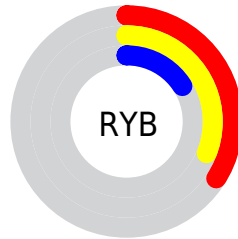
The Hex color **573D28** is a dark color, and the websafe version is hex **663333**. A complement of this color would be **284257**, and the grayscale version is **424242**.

A 20% lighter version of the original color is **8A6C55**, and **281300** is the 20% darker color. If you saturate the color by 10%, you get **57381F**, and if you desaturate by 10%, it is **574231**.

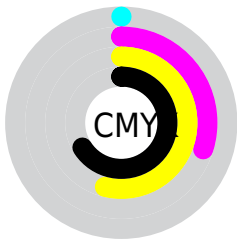
Distribution



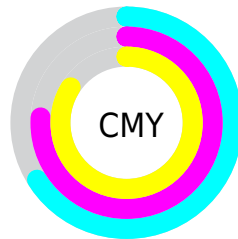
- Red (34%)
- Green (24%)
- Blue (16%)



- Red (34%)
- Yellow (31%)
- Blue (16%)



- Cyan (0%)
- Magenta (30%)
- Yellow (54%)
- Black (66%)



- Cyan (66%)
- Magenta (76%)
- Yellow (84%)

Brightness & Saturation Gradients

These gradients show how the Hex color 573D28 changes by changing the brightness by 10 percent. The first figure shows a shift by +10% for each color and the second figure -10%.

Similar to the brightness gradients but the following saturation gradients show a change of the Hex color 573D28 by changing the saturation by 10% instead.

 573D28

 573D28

FFFFFF

 3F2713

 8A6C55

 281300

 A5866E

 020000

 C1A087

 000000

 DDBBA2

 FAD7BD

 FFF3D8

 FFFFF5

 573D28

 573D28

■ 57381F

■ 574231

■ 573317

■ 574739

■ 572F0E

■ 574B42

■ 572A05

■ 57504B

■ 572700

■ 575554

■ 575A5C

■ 575F65

■ 57646E

■ 576876

Harmonies

Analogous

The Analogous color harmony consists of three colors that are next to each other on the color wheel.



5E3933



573D28



4A4224

Triad

The Triadic color harmony groups three colors that are evenly spaced from another and form a triangle on the color wheel.



573D28



144A44



473E5B

Complementary

The Complementary color scheme is a pair of colors which are on the opposite of each other on the color wheel.



573D28



284257

Split Complementary

Split-complementary colors differ from the complementary color scheme. The scheme consists of three colors, the original color and two neighbors of the complement color.



304360



573D28



034A53

Square

The Square scheme is like the rectangle color scheme, but the four colors are evenly spaced on the color wheel.



573D28



284935



15475D



573950

Rectangle

The Rectangle color scheme consists of four colors that form a rectangle on the color wheel.



573D28



404527



15475D



40405E

Sweetspot

The Sweet Spot groups the original color and five complimentary colors.



573D28



70665E



572843



38322D



B8B8B8



383838

Same Dimension

The Same Dimension uses a secret algorithm to generate beautiful new colors.



573D28



704827



575428



2B2927



6B3000



EB6900

Inverse Universe

The Inverse Universe completely reimagines the original color for something new.



284257



275070



282B57



27292B



003B6B



0082EB

Previews

White Background



This preview shows how the Hex color 573D28 looks on a white background.

Color Contrast Check

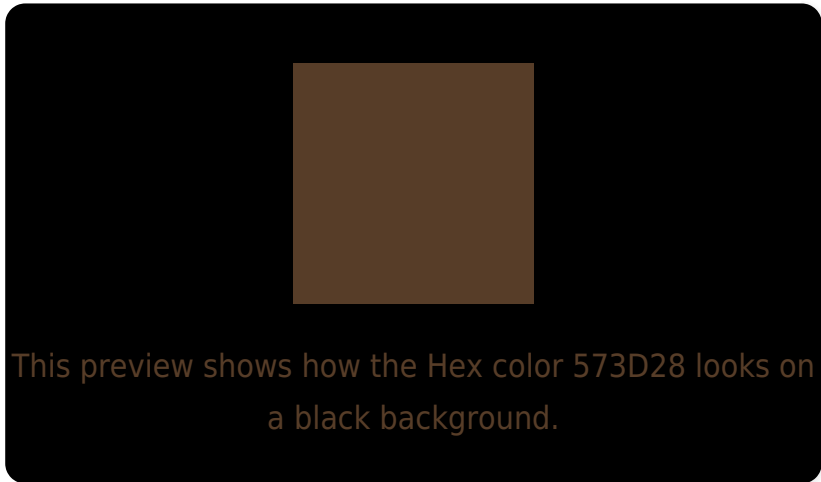
Large Text (above 18pt) WCAG AA ✓ Pass

Any Text WCAG AA ✓ Pass

Large Text (above 18pt) WCAG AAA ✓ Pass

Any Text WCAG AAA ✓ Pass

Black Background



Color Contrast Check

Large Text (above 18pt) WCAG AA × Fail

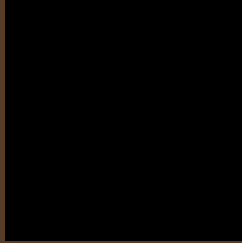
Any Text WCAG AA × Fail

Large Text (above 18pt) WCAG AAA × Fail

Any Text WCAG AAA × Fail

If you want to check with other color combinations, try the [Color Contrast Checker](#).

Hex 573D28 Background



This preview shows how black text looks on a background with the Hex color 573D28.

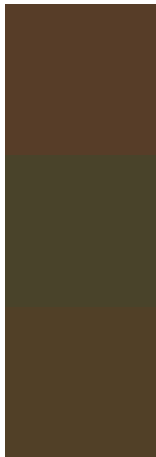


This preview shows how white text looks on a background with the Hex color 573D28.

Color Blindness Simulation

Color vision deficiency is a very complex topic, and I could not describe the different causes any better than Wikipedia does, so if you want to learn more, you should check out their [article about color blindness](#).

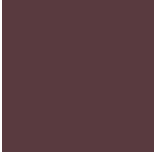
Dichromacy



Original Color
573D28

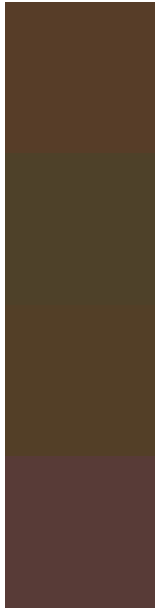
Protanopia
49432A

Deuteranopia
514027



Tritanopia
593A3F

Trichromacy



Original Color
573D28

Protanomaly
4E4129

Deuteranomaly
533F27

Tritanomaly
583B37

Monochromacy



Original Color
573D28

Achromatopsia
424242

Achromatomaly
4A4039

CSS Examples

Text

The CSS property to change the color of the text to Hex 573D28 is called "color". The color property can be set on classes, ids or directly on the HTML element.

This example shows how text in the color #573D28 looks like.

```
.text, #text, p{  
    color:#573D28  
}
```

If you want to add a text shadow in that color use the text-shadow property, you can generate a text shadow directly with our [CSS Text Shadow Generator](#).

Here you see how black text with a 4 pixel #573D28 colored shadow looks like.

```
.shadow{ text-shadow: 4px 4px 2px #573D28
}
```

Border

The CSS property to change the border of an element to Hex 573D28 is called "border". The border property can be set on classes, ids or directly on the HTML element.

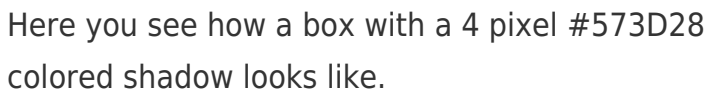
This example shows the color as border, it can be applied via the CSS property "border" or "border-color".

```
.border, #border, table{ border:4px solid
#573D28 }
```

If only the border color should be changed use the property border-color.

```
.border{ border-color:#573D28 }
```

If you want to add a box shadow in that color use:



Here you see how a box with a 4 pixel #573D28 colored shadow looks like.

```
.boxshadow{ -moz-box-shadow:4px 4px 4px  
4px #573D28; -webkit-box-shadow:4px 4px  
4px 4px #573D28; box-shadow:4px 4px 4px  
4px #573D28 }
```

Background

The CSS property to change the background color of an element to Hex 573D28 is called "background". The background property can be set on classes, ids or directly on the HTML element.

```
.background, #background, body{  
background:#573D28 }
```

If only the background color should be changed can be used:

```
.background{ background-color:#573D28 }
```

This example shows the color as background, it is applied via the CSS property "background".

To optimize and compress your CSS code, you can use our [online CSS compressor and optimizer](#) based on csstidy. If you want to create a linear or radial gradient as background or border, check our [CSS Gradient Generator](#).

Hey! You found this booklet interesting? Support Converting Colors with the new Membership Option!

The pro membership hides all ads, plus gives you double the colors in the color bucket, and more awesome pro features!

[Learn more, Memberships starting at \\$2.50/m!](#)

**Follow me
on Twitter!**

@ConvertingColor