

# Converting Colors

Hex(57414B)

Have a look what the booklet for  
Hex(57414B) contains.

<b>Hex(57414B)</b> .....	3
<i><b>Conversions</b></i> .....	4
<i><b>Details</b></i> .....	6
<i><b>Harmonies</b></i> .....	11
<i><b>Previews</b></i> .....	23
<i><b>Color Blindness Simulation</b></i> .....	26
<i><b>CSS Examples</b></i> .....	29

# Color

**Hex(57414B)**

# Conversions

Conversions Part 1	
Format	Color
Hex	57414B
RGB	87, 65, 75
RGB Percent	34%, 25%, 29%
CMY	0.6588, 0.7451, 0.7059
CMYK	0.00, 0.25, 0.14, 0.66
HSL	333°, 14%, 30%
HSV	333°, 25%, 34%
XYZ	7.0908, 6.3148, 7.5018
YIQ	72.7180, 9.9020, 7.7740

# Conversions

## Conversions Part 2

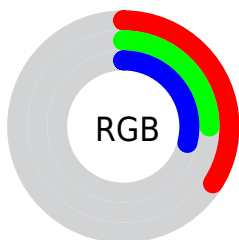
Format	Color
<a href="#">RYB</a>	<a href="#">87, 65, 75</a>
Decimal	<a href="#">5718347</a>
CIELab	<a href="#">30.19, 11.38, -2.35</a>
CIELCh	<a href="#">30, 11.616, 348.343</a>
Yxy	<a href="#">6.3148, 0.3392, 0.3020</a>
Android (android.graphics.Color)	<a href="#">4283908427</a> (0xFF57414B)
YUV	<a href="#">72.7180, 1.1250, 12.5253</a>
Hunter-Lab	<a href="#">25.1293, 6.3913, -0.1091</a>

# Details

The Hex color **57414B** is a dark color, and the websafe version is hex **333333**. A complement of this color would be **41574D**, and the grayscale version is **494949**.

A 20% lighter version of the original color is **89717C**, and **29161F** is the 20% darker color. If you saturate the color by 10%, you get **573846**, and if you desaturate by 10%, it is **574A50**.

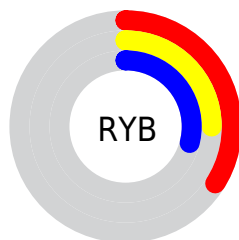
# Distribution



Red (34%)

Green (25%)

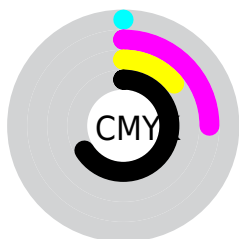
Blue (29%)



Red (34%)

Yellow (25%)

Blue (29%)

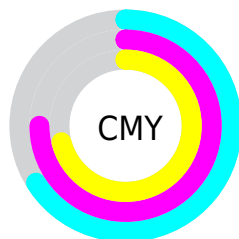


Cyan (0%)

Magenta (25%)

Yellow (14%)

Black (66%)



Cyan (66%)

Magenta (75%)

Yellow (71%)

# Brightness & Saturation Gradients

These gradients show how the Hex color 57414B changes by changing the brightness by 10 percent. The first figure shows a shift by +10% for each color and the second figure -10%.

Similar to the brightness gradients but the following saturation gradients show a change of the Hex color 57414B by changing the saturation by 10% instead.



 57414B

 57414B

FFFFFF

 3F2B34

 89717C

 29161F

 A48A95

 170007

 BFA5B0

 000000

 DBC0CC

 F7DCE8

 FFF8FF

 57414B

 57414B

 573846

 574A50

 573042

 575254

 57273D

 575B59

 571E38

 57645E

 571533

 576D63

 570D2F

 577567

 57042A

 577E6C

 570028

 578771

 578F76

# Harmonies

## Analogous

The Analogous color harmony consists of three colors that are next to each other on the color wheel.



4F4353



57414B



5A4142

# Triad

The Triadic color harmony groups three colors that are evenly spaced from another and form a triangle on the color wheel.



57414B



484836



2F4B54

# Complementary

The Complementary color scheme is a pair of colors which are on the opposite of each other on the color wheel.



57414B



41574D

# Split Complementary

Split-complementary colors differ from the complementary color scheme. The scheme consists of three colors, the original color and two neighbors of the complement color.



2E4C4C



57414B



3E4B3B

# Square

The Square scheme is like the rectangle color scheme, but the four colors are evenly spaced on the color wheel.



57414B



514536



344C43



384959

# Rectangle

The Rectangle color scheme consists of four colors that form a rectangle on the color wheel.



57414B



59423C



344C43



2E4C52



# Sweetspot

The Sweet Spot groups the original color and five complimentary colors.



57414B



70676B



4D4157



383235



B8B8B8



383838



# Same Dimension

The Same Dimension uses a secret algorithm to generate beautiful new colors.



57414B



704F5E



574241



2B2729



6B0031



EB006B



# Inverse Universe

The Inverse Universe completely reimagines the original color for something new.



57414B



704F5E



415657



2B2729



6B0031

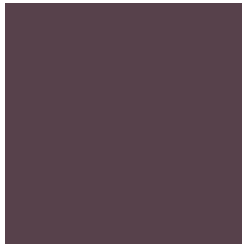


EB006B



# Previews

## White Background



This preview shows how the Hex color 57414B looks on a white background.

## Color Contrast Check

Large Text (above 18pt) WCAG AA ✓ Pass

Any Text WCAG AA ✓ Pass

Large Text (above 18pt) WCAG AAA ✓ Pass

Any Text WCAG AAA ✓ Pass

# Black Background



This preview shows how the Hex color 57414B looks on a black background.

## Color Contrast Check

Large Text (above 18pt) WCAG AA × Fail

Any Text WCAG AA × Fail

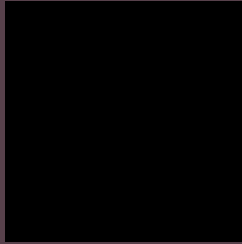
Large Text (above 18pt) WCAG AAA × Fail

Any Text WCAG AAA × Fail

If you want to check with other color combinations, try the [Color Contrast Checker](#).



## Hex 57414B Background



This preview shows how black text looks on a background with the Hex color 57414B.



This preview shows how white text looks on a background with the Hex color 57414B.

# Color Blindness Simulation

Color vision deficiency is a very complex topic, and I could not describe the different causes any better than Wikipedia does, so if you want to learn more, you should check out their [article about color blindness](#).

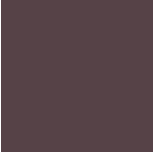
## Dichromacy



**Original Color**  
57414B

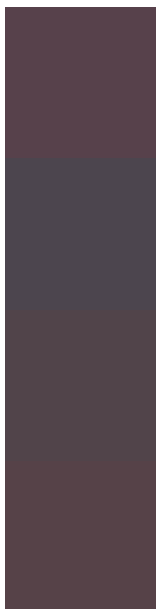
**Protanopia**  
46474F

**Deuteranopia**  
4D454A



**Tritanopia**  
564247

# Trichromacy



**Original Color**

57414B

**Protanomaly**

4C454E

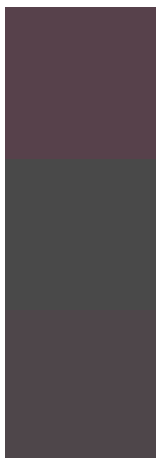
**Deuteranomaly**

51444A

**Tritanomaly**

564248

# Monochromacy



**Original Color**

57414B

**Achromatopsia**

494949

**Achromatomaly**

4E464A

# CSS Examples

## Text

The CSS property to change the color of the text to Hex 57414B is called "color". The color property can be set on classes, ids or directly on the HTML element.

This example shows how text in the color #57414B looks like.

```
.text, #text, p{  
    color:#57414B  
}
```

If you want to add a text shadow in that color use the text-shadow property, you can generate a text shadow directly with our [CSS Text Shadow Generator](#).

Here you see how black text with a 4 pixel #57414B colored shadow looks like.

```
.shadow{ text-shadow: 4px 4px 2px #57414B
}
```

## Border

The CSS property to change the border of an element to Hex 57414B is called "border". The border property can be set on classes, ids or directly on the HTML element.

This example shows the color as border, it can be applied via the CSS property "border" or "border-color".

```
.border, #border, table{ border:4px solid
#57414B }
```

If only the border color should be changed use the property `border-color`.

```
.border{ border-color:#57414B }
```

If you want to add a box shadow in that color use:

Here you see how a box with a 4 pixel #57414B colored shadow looks like.

```
.boxshadow{ -moz-box-shadow:4px 4px 4px  
4px #57414B; -webkit-box-shadow:4px 4px  
4px 4px #57414B; box-shadow:4px 4px 4px  
4px #57414B }
```

# Background

The CSS property to change the background color of an element to Hex 57414B is called "background". The background property can be set on classes, ids or directly on the HTML element.

```
.background, #background, body{  
background:#57414B }
```

If only the background color should be changed can be used:

```
.background{ background-color:#57414B }
```

This example shows the color as background, it is applied via the CSS property "background".

To optimize and compress your CSS code, you can use our [online CSS compressor and optimizer](#) based on csstidy. If you want to create a linear or radial gradient as background or border, check our [CSS Gradient Generator](#).



Hey! You found this booklet  
interesting? Support Converting  
Colors with the new Membership  
Option!

The pro membership hides all ads, plus gives you  
double the colors in the color bucket, and more  
awesome pro features!

**[Learn more, Memberships starting at \\$2.50/m!](#)**

**Follow me  
on Twitter!**

@ConvertingColor