

Converting Colors

Hex(57483E)

Have a look what the booklet for
Hex(57483E) contains.

Hex(57483E)	3
<i>Conversions</i>	4
<i>Details</i>	6
<i>Harmonies</i>	11
<i>Previews</i>	23
<i>Color Blindness Simulation</i>	26
<i>CSS Examples</i>	29

Color

Hex(57483E)

Conversions

Conversions Part 1

Format	Color
Hex	57483E
RGB	87, 72, 62
RGB Percent	34%, 28%, 24%
CMY	0.6588, 0.7176, 0.7569
CMYK	0.00, 0.17, 0.29, 0.66
HSL	24°, 17%, 29%
HSV	24°, 29%, 34%
XYZ	7.1173, 7.0088, 5.5351
YIQ	75.3450, 12.1500, 0.0700

Conversions

Conversions Part 2

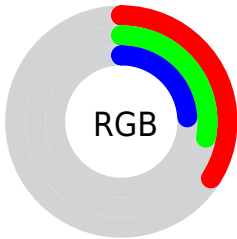
Format	Color
R_{YB}	87, 79, 62
Decimal	5720126
CIE _{Lab}	31.83, 4.60, 8.37
CIE _{LCh}	32, 9.551, 61.224
Yxy	7.0088, 0.3620, 0.3565
Android (android.graphics.Color)	4283910206 (0xFF57483E)
YUV	75.3450, -6.5791, 10.2214
Hunter-Lab	26.4741, 1.6587, 6.1357

Details

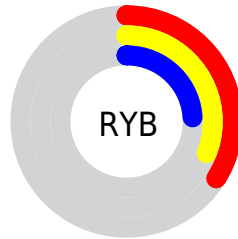
The Hex color **57483E** is a dark color, and the websafe version is hex **333333**. A complement of this color would be **3E4D57**, and the grayscale version is **4B4B4B**.

A 20% lighter version of the original color is **89786E**, and **291D14** is the 20% darker color. If you saturate the color by 10%, you get **574335**, and if you desaturate by 10%, it is **574D47**.

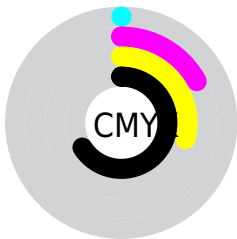
Distribution



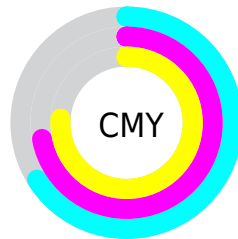
- Red (34%)
- Green (28%)
- Blue (24%)



- Red (34%)
- Yellow (31%)
- Blue (24%)



- Cyan (0%)
- Magenta (17%)
- Yellow (29%)
- Black (66%)



- Cyan (66%)
- Magenta (72%)
- Yellow (76%)

Brightness & Saturation Gradients

These gradients show how the Hex color 57483E changes by changing the brightness by 10 percent. The first figure shows a shift by +10% for each color and the second figure -10%.

Similar to the brightness gradients but the following saturation gradients show a change of the Hex color 57483E by changing the saturation by 10% instead.

■ 57483E

■ 57483E

FFFFFF

■ 3F3228

■ 89786E

■ 291D14

■ A49287

■ 140300

■ BFADA1

■ 000000

■ DBC8BC

■ F7E4D8

■ FFFFF4

■ 57483E

■ 57483E

■ 574335

■ 574D47

■ 573E2D

■ 57524F

■ 573824

■ 575858

■ 57331B

■ 575D61

■ 572E12

■ 57626A

■ 57290A

■ 576772

■ 572301

■ 576D7B

■ 572300

■ 577284

■ 57778C

Harmonies

Analogous

The Analogous color harmony consists of three colors that are next to each other on the color wheel.



5A4643



57483E



504A3C

Triad

The Triadic color harmony groups three colors that are evenly spaced from another and form a triangle on the color wheel.



57483E



394F4B



4D4958

Complementary

The Complementary color scheme is a pair of colors which are on the opposite of each other on the color wheel.



57483E



3E4D57

Split Complementary

Split-complementary colors differ from the complementary color scheme. The scheme consists of three colors, the original color and two neighbors of the complement color.



434B5A



57483E



374F52

Square

The Square scheme is like the rectangle color scheme, but the four colors are evenly spaced on the color wheel.



57483E



404E43



3B4E58



554752

Rectangle

The Rectangle color scheme consists of four colors that form a rectangle on the color wheel.



57483E



4B4C3D



3B4E58



494A59

Sweetspot

The Sweet Spot groups the original color and five complimentary colors.



57483E



706A66



573E4D



383432



B8B8B8



383838

Same Dimension

The Same Dimension uses a secret algorithm to generate beautiful new colors.



57483E



70594A



57553E



2B2927



6B2B00



EB5E00

Inverse Universe

The Inverse Universe completely reimagines the original color for something new.



3E4D57



4A6170



3E4057



272A2B



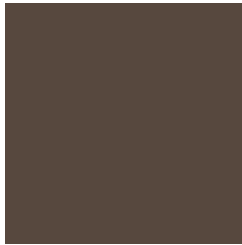
00406B



008DEB

Previews

White Background



This preview shows how the Hex color 57483E looks on a white background.

Color Contrast Check

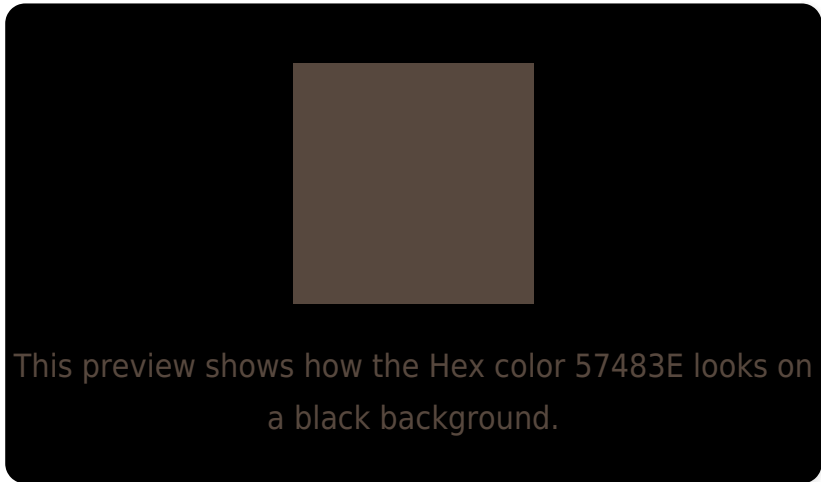
Large Text (above 18pt) WCAG AA ✓ Pass

Any Text WCAG AA ✓ Pass

Large Text (above 18pt) WCAG AAA ✓ Pass

Any Text WCAG AAA ✓ Pass

Black Background



Color Contrast Check

Large Text (above 18pt) WCAG AA × Fail

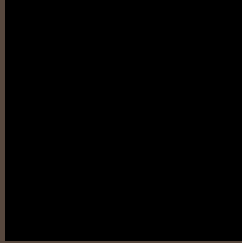
Any Text WCAG AA × Fail

Large Text (above 18pt) WCAG AAA × Fail

Any Text WCAG AAA × Fail

If you want to check with other color combinations, try the [Color Contrast Checker](#).

Hex 57483E Background



This preview shows how black text looks on a background with the Hex color 57483E.



This preview shows how white text looks on a background with the Hex color 57483E.

Color Blindness Simulation

Color vision deficiency is a very complex topic, and I could not describe the different causes any better than Wikipedia does, so if you want to learn more, you should check out their [article about color blindness](#).

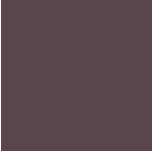
Dichromacy



Original Color
57483E

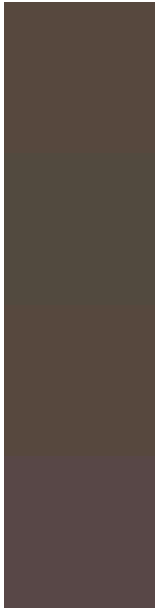
Protanopia
4F4B3F

Deuteranopia
57483E



Tritanopia
59464C

Trichromacy



Original Color
57483E

Protanomaly
524A3F

Deuteranomaly
57483E

Tritanomaly
584747

Monochromacy



Original Color
57483E

Achromatopsia
4B4B4B

Achromatomaly
4F4A46

CSS Examples

Text

The CSS property to change the color of the text to Hex 57483E is called "color". The color property can be set on classes, ids or directly on the HTML element.

This example shows how text in the color #57483E looks like.

```
.text, #text, p{  
    color:#57483E  
}
```

If you want to add a text shadow in that color use the text-shadow property, you can generate a text shadow directly with our [CSS Text Shadow Generator](#).

Here you see how black text with a 4 pixel #57483E colored shadow looks like.

```
.shadow{ text-shadow: 4px 4px 2px #57483E
}
```

Border

The CSS property to change the border of an element to Hex 57483E is called "border". The border property can be set on classes, ids or directly on the HTML element.

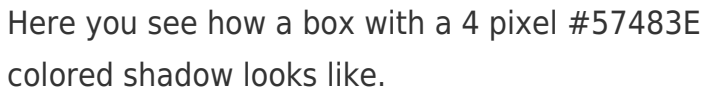
This example shows the color as border, it can be applied via the CSS property "border" or "border-color".

```
.border, #border, table{ border:4px solid
#57483E }
```

If only the border color should be changed use the property `border-color`.

```
.border{ border-color:#57483E }
```

If you want to add a box shadow in that color use:



Here you see how a box with a 4 pixel #57483E colored shadow looks like.

```
.boxshadow{ -moz-box-shadow:4px 4px 4px  
4px #57483E; -webkit-box-shadow:4px 4px  
4px 4px #57483E; box-shadow:4px 4px 4px  
4px #57483E }
```

Background

The CSS property to change the background color of an element to Hex 57483E is called "background". The background property can be set on classes, ids or directly on the HTML element.

```
.background, #background, body{  
background:#57483E }
```

If only the background color should be changed can be used:

```
.background{ background-color:#57483E }
```

This example shows the color as background, it is applied via the CSS property "background".

To optimize and compress your CSS code, you can use our [online CSS compressor and optimizer](#) based on csstidy. If you want to create a linear or radial gradient as background or border, check our [CSS Gradient Generator](#).

Hey! You found this booklet interesting? Support Converting Colors with the new Membership Option!

The pro membership hides all ads, plus gives you double the colors in the color bucket, and more awesome pro features!

[Learn more, Memberships starting at \\$2.50/m!](#)

**Follow me
on Twitter!**

@ConvertingColor