

# Converting Colors

Hex(583E42)

Have a look what the booklet for  
Hex(583E42) contains.

<b>Hex(583E42)</b> .....	3
<b><i>Conversions</i></b> .....	4
<b><i>Details</i></b> .....	6
<b><i>Harmonies</i></b> .....	11
<b><i>Previews</i></b> .....	23
<b><i>Color Blindness Simulation</i></b> .....	26
<b><i>CSS Examples</i></b> .....	29

**Color**

**Hex(583E42)**

# Conversions

## Conversions Part 1

<b>Format</b>	<b>Color</b>
Hex	583E42
RGB	88, 62, 66
RGB Percent	35%, 24%, 26%
CMY	0.6549, 0.7569, 0.7412
CMYK	0.00, 0.30, 0.25, 0.65
HSL	351°, 17%, 29%
HSV	351°, 30%, 35%
XYZ	6.7305, 5.9133, 5.9409
YIQ	70.2300, 14.2120, 6.7560

# Conversions

## Conversions Part 2

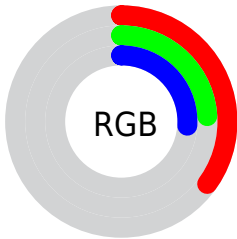
<b>Format</b>	<b>Color</b>
<b>R<sub>YB</sub></b>	88, 62, 66
Decimal	5783106
CIE Lab	29.19, 12.06, 2.06
CIE LCh	29, 12.237, 9.699
Yxy	5.9133, 0.3622, 0.3182
Android (android.graphics.Color)	4283973186 (0xFF583E42)
YUV	70.2300, -2.0854, 15.5843
Hunter-Lab	24.3173, 6.8497, 2.5371

# Details

The Hex color **583E42** is a dark color, and the websafe version is hex **663333**. A complement of this color would be **3E5854**, and the grayscale version is **464646**.

A 20% lighter version of the original color is **8B6E72**, and **2A1317** is the 20% darker color. If you saturate the color by 10%, you get **58353B**, and if you desaturate by 10%, it is **584749**.

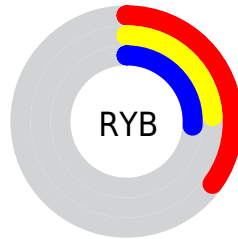
# Distribution



Red (35%)

Green (24%)

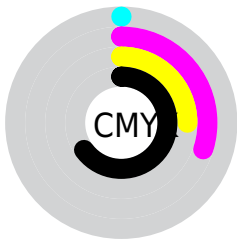
Blue (26%)



Red (35%)

Yellow (24%)

Blue (26%)

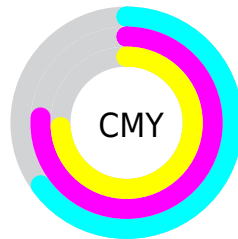


Cyan (0%)

Magenta (30%)

Yellow (25%)

Black (65%)



Cyan (65%)

Magenta (76%)

Yellow (74%)

# Brightness & Saturation Gradients

These gradients show how the Hex color 583E42 changes by changing the brightness by 10 percent. The first figure shows a shift by +10% for each color and the second figure -10%.

Similar to the brightness gradients but the following saturation gradients show a change of the Hex color 583E42 by changing the saturation by 10% instead.



■ 583E42

■ 583E42

FFFFFF

■ 40282C

■ 8B6E72

■ 2A1317

■ A5878B

■ 140000

■ C0A1A6

■ 000000

■ DCBCC1

■ F9D8DD

■ FFF5F9

■ 583E42

■ 583E42

■ 58353B

■ 584749

■ 582C33

■ 585051

■ 58242C

■ 585858

■ 581B24

■ 586160

■ 58121D

■ 586A67

■ 580915

■ 58736F

■ 58000E

■ 587C76

■ 58847E

■ 588D85

# Harmonies

## Analogous

The Analogous color harmony consists of three colors that are next to each other on the color wheel.



543F4C



583E42



573F39

# Triad

The Triadic color harmony groups three colors that are evenly spaced from another and form a triangle on the color wheel.



583E42



3E4836



314856

# Complementary

The Complementary color scheme is a pair of colors which are on the opposite of each other on the color wheel.



583E42



3E5854

# Split Complementary

Split-complementary colors differ from the complementary color scheme. The scheme consists of three colors, the original color and two neighbors of the complement color.



2A4951



583E42



344A3E

# Square

The Square scheme is like the rectangle color scheme, but the four colors are evenly spaced on the color wheel.



583E42



494532



2C4A48



3E4557

# Rectangle

The Rectangle color scheme consists of four colors that form a rectangle on the color wheel.



583E42



544135



2C4A48



2E4855



# Sweetspot

The Sweet Spot groups the original color and five complimentary colors.



583E42



73686A



543E58



3B3435



BABABA



3B3B3B



# Same Dimension

The Same Dimension uses a secret algorithm to generate beautiful new colors.



583E42



734B51



58473E



2B2728



6B0010



EB0024



# Inverse Universe

The Inverse Universe completely reimagines the original color for something new.



583E42



734B51



3E4F58



2B2728



6B0010

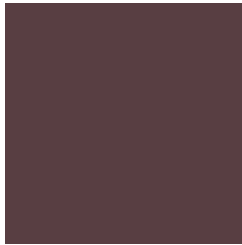


EB0024



# Previews

## White Background



This preview shows how the Hex color 583E42 looks on a white background.

## Color Contrast Check

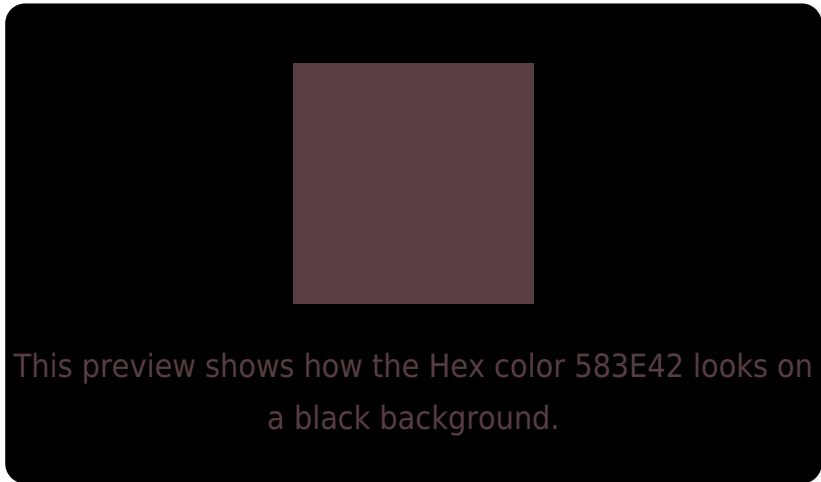
Large Text (above 18pt) WCAG AA ✓ Pass

Any Text WCAG AA ✓ Pass

Large Text (above 18pt) WCAG AAA ✓ Pass

Any Text WCAG AAA ✓ Pass

# Black Background



## Color Contrast Check

Large Text (above 18pt) WCAG AA × Fail

Any Text WCAG AA × Fail

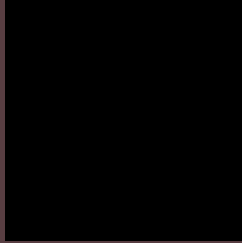
Large Text (above 18pt) WCAG AAA × Fail

Any Text WCAG AAA × Fail

If you want to check with other color combinations, try the [Color Contrast Checker](#).



## Hex 583E42 Background



This preview shows how black text looks on a background with the Hex color 583E42.

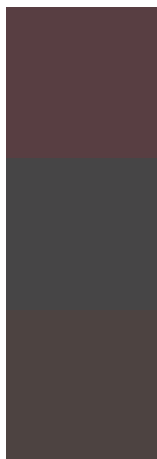


This preview shows how white text looks on a background with the Hex color 583E42.

# Color Blindness Simulation

Color vision deficiency is a very complex topic, and I could not describe the different causes any better than Wikipedia does, so if you want to learn more, you should check out their [article about color blindness](#).

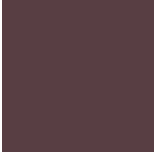
## Dichromacy



**Original Color**  
583E42

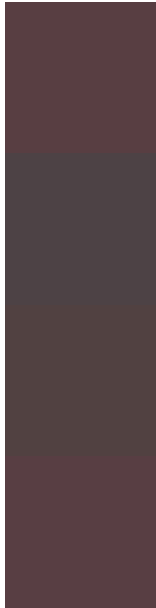
**Protanopia**  
464546

**Deuteranopia**  
4D4341



**Tritanopia**  
583E43

# Trichromacy



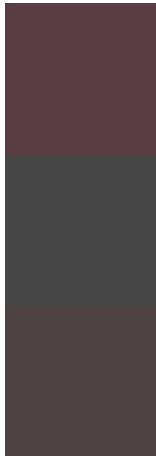
**Original Color**  
583E42

**Protanomaly**  
4D4245

**Deuteranomaly**  
514141

**Tritanomaly**  
583E43

# Monochromacy



**Original Color**  
583E42

**Achromatopsia**  
464646

**Achromatomaly**  
4D4345

# CSS Examples

## Text

The CSS property to change the color of the text to Hex 583E42 is called "color". The color property can be set on classes, ids or directly on the HTML element.

This example shows how text in the color #583E42 looks like.

```
.text, #text, p{  
    color:#583E42  
}
```

If you want to add a text shadow in that color use the text-shadow property, you can generate a text shadow directly with our [CSS Text Shadow Generator](#).

Here you see how black text with a 4 pixel #583E42 colored shadow looks like.

```
.shadow{ text-shadow: 4px 4px 2px #583E42
}
```

## Border

The CSS property to change the border of an element to Hex 583E42 is called "border". The border property can be set on classes, ids or directly on the HTML element.

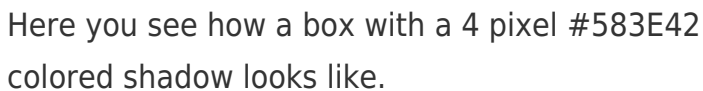
This example shows the color as border, it can be applied via the CSS property "border" or "border-color".

```
.border, #border, table{ border:4px solid
#583E42 }
```

If only the border color should be changed use the property `border-color`.

```
.border{ border-color:#583E42 }
```

If you want to add a box shadow in that color use:



Here you see how a box with a 4 pixel #583E42 colored shadow looks like.

```
.boxshadow{ -moz-box-shadow:4px 4px 4px  
4px #583E42; -webkit-box-shadow:4px 4px  
4px 4px #583E42; box-shadow:4px 4px 4px  
4px #583E42 }
```

# Background

The CSS property to change the background color of an element to Hex 583E42 is called "background". The background property can be set on classes, ids or directly on the HTML element.

```
.background, #background, body{  
background:#583E42 }
```

If only the background color should be changed can be used:

```
.background{ background-color:#583E42 }
```

This example shows the color as background, it is applied via the CSS property "background".

To optimize and compress your CSS code, you can use our [online CSS compressor and optimizer](#) based on csstidy. If you want to create a linear or radial gradient as background or border, check our [CSS Gradient Generator](#).



Hey! You found this booklet interesting? Support Converting Colors with the new Membership Option!

The pro membership hides all ads, plus gives you double the colors in the color bucket, and more awesome pro features!

**[Learn more, Memberships starting at \\$2.50/m!](#)**

**Follow me  
on Twitter!**

@ConvertingColor