

# Converting Colors

Hex(59365F)

Have a look what the booklet for  
Hex(59365F) contains.

<b>Hex(59365F)</b> .....	3
<b><i>Conversions</i></b> .....	4
<b><i>Details</i></b> .....	6
<b><i>Harmonies</i></b> .....	11
<b><i>Previews</i></b> .....	23
<b><i>Color Blindness Simulation</i></b> .....	26
<b><i>CSS Examples</i></b> .....	29

# Color

**Hex(59365F)**

# Conversions

## Conversions Part 1

Format	Color
Hex	59365F
RGB	89, 54, 95
RGB Percent	35%, 21%, 37%
CMY	0.6510, 0.7882, 0.6275
CMYK	0.06, 0.43, 0.00, 0.63
HSL	291°, 28%, 29%
HSV	291°, 43%, 37%
XYZ	7.5045, 5.5884, 11.5096
YIQ	69.1390, 7.6990, 20.1710

# Conversions

## Conversions Part 2

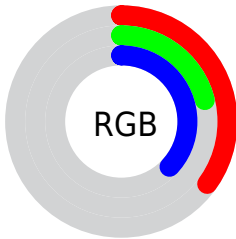
<b>Format</b>	<b>Color</b>
<b>R<sub>YB</sub></b>	89, 54, 95
Decimal	5846623
CIE <sub>Lab</sub>	28.35, 23.34, -18.10
CIE <sub>LCh</sub>	28, 29.537, 322.207
Yxy	5.5884, 0.3050, 0.2271
Android (android.graphics.Color)	4284036703 (0xFF59365F)
YUV	69.1390, 12.7495, 17.4181
Hunter-Lab	23.6398, 15.2959, -12.3189

# Details

The Hex color **59365F** is a dark color, and the websafe version is hex **663366**. A complement of this color would be **3C5F36**, and the grayscale version is **454545**.

A 20% lighter version of the original color is **8C6692**, and **2A0A31** is the 20% darker color. If you saturate the color by 10%, you get **582C5F**, and if you desaturate by 10%, it is **5A405F**.

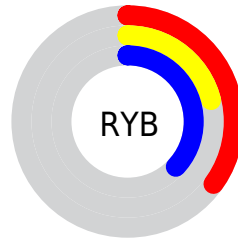
# Distribution



 Red (35%)

 Green (21%)

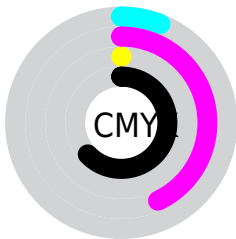
 Blue (37%)



 Red (35%)

 Yellow (21%)

 Blue (37%)

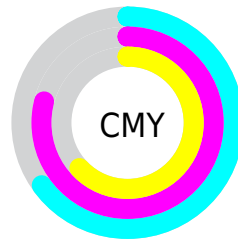


 Cyan (6%)


 Magenta (43%)

 Yellow (0%)

 Black (63%)



 Cyan (65%)

 Magenta (79%)

 Yellow (63%)

# Brightness & Saturation Gradients

These gradients show how the Hex color 59365F changes by changing the brightness by 10 percent. The first figure shows a shift by +10% for each color and the second figure -10%.

Similar to the brightness gradients but the following saturation gradients show a change of the Hex color 59365F by changing the saturation by 10% instead.



■ 59365F

■ 59365F

FFFFFF

■ 412047

■ 8C6692

■ 2A0A31

■ A77FAC

■ 15001C

■ C299C8

■ 000000

■ DEB4E4

■ FBD0FF

■ FFECFF

■ 59365F

■ 59365F

■ 582C5F

■ 5A405F

■ 56235F

■ 5C495F

■ 55195F

■ 5D525F

■ 53105F

■ 5F5C5F

■ 52065F

■ 60665F

■ 51005F

■ 616F5F

■ 63795F

■ 64825F

■ 668B5F

# Harmonies

## Analogous

The Analogous color harmony consists of three colors that are next to each other on the color wheel.



3A3F6D



59365F



692F4A

# Triad

The Triadic color harmony groups three colors that are evenly spaced from another and form a triangle on the color wheel.



59365F



554014



004E53

# Complementary

The Complementary color scheme is a pair of colors which are on the opposite of each other on the color wheel.



59365F



3C5F36

# Split Complementary

Split-complementary colors differ from the complementary color scheme. The scheme consists of three colors, the original color and two neighbors of the complement color.



004E3C



59365F



3F4716

# Square

The Square scheme is like the rectangle color scheme, but the four colors are evenly spaced on the color wheel.



59365F



65371F



234B26



004C66

# Rectangle

The Rectangle color scheme consists of four colors that form a rectangle on the color wheel.



59365F



6D2F3A



234B26



004E4C



# Sweetspot

The Sweet Spot groups the original color and five complimentary colors.



59365F



786A7A



363C5F



3C333D



BDBDBD



3D3D3D



# Same Dimension

The Same Dimension uses a secret algorithm to generate beautiful new colors.



59365F



713B7A



5F3651



302C30



600070



CD00F0



# Inverse Universe

The Inverse Universe completely reimagines the original color for something new.



5F363C



7A3B44



365F44



302C2C



700010



F00023



# Previews

## White Background



This preview shows how the Hex color 59365F looks on a white background.

## Color Contrast Check

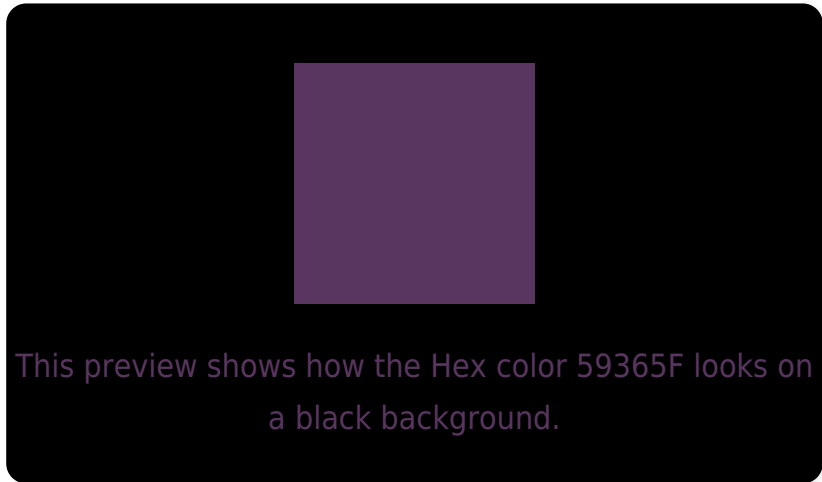
Large Text (above 18pt) WCAG AA ✓ Pass

Any Text WCAG AA ✓ Pass

Large Text (above 18pt) WCAG AAA ✓ Pass

Any Text WCAG AAA ✓ Pass

# Black Background



## Color Contrast Check

Large Text (above 18pt) WCAG AA × Fail

Any Text WCAG AA × Fail

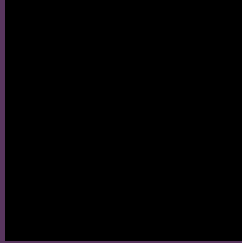
Large Text (above 18pt) WCAG AAA × Fail

Any Text WCAG AAA × Fail

If you want to check with other color combinations, try the [Color Contrast Checker](#).



## Hex 59365F Background



This preview shows how black text looks on a background with the Hex color 59365F.



This preview shows how white text looks on a background with the Hex color 59365F.

# Color Blindness Simulation

Color vision deficiency is a very complex topic, and I could not describe the different causes any better than Wikipedia does, so if you want to learn more, you should check out their [article about color blindness](#).

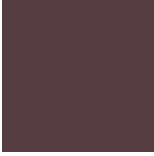
## Dichromacy



**Original Color**  
59365F

**Protanopia**  
354269

**Deuteranopia**  
3B425D



**Tritanopia**  
553D41

# Trichromacy



**Original Color**  
59365F

**Protanomaly**  
423E65

**Deuteranomaly**  
463E5E

**Tritanomaly**  
563A4C

# Monochromacy



**Original Color**  
59365F

**Achromatopsia**  
454545

**Achromatomaly**  
4C404E

# CSS Examples

## Text

The CSS property to change the color of the text to Hex 59365F is called "color". The color property can be set on classes, ids or directly on the HTML element.

This example shows how text in the color #59365F looks like.

```
.text, #text, p{  
    color:#59365F  
}
```

If you want to add a text shadow in that color use the text-shadow property, you can generate a text shadow directly with our [CSS Text Shadow Generator](#).

Here you see how black text with a 4 pixel #59365F colored shadow looks like.

```
.shadow{ text-shadow: 4px 4px 2px #59365F
}
```

## Border

The CSS property to change the border of an element to Hex 59365F is called "border". The border property can be set on classes, ids or directly on the HTML element.

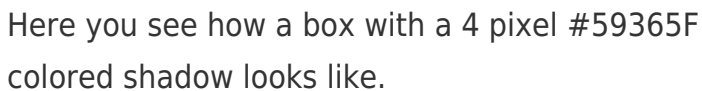
This example shows the color as border, it can be applied via the CSS property "border" or "border-color".

```
.border, #border, table{ border:4px solid
#59365F }
```

If only the border color should be changed use the property `border-color`.

```
.border{ border-color:#59365F }
```

If you want to add a box shadow in that color use:



Here you see how a box with a 4 pixel #59365F colored shadow looks like.

```
.boxshadow{ -moz-box-shadow:4px 4px 4px  
4px #59365F; -webkit-box-shadow:4px 4px  
4px 4px #59365F; box-shadow:4px 4px 4px  
4px #59365F }
```

# Background

The CSS property to change the background color of an element to Hex 59365F is called "background". The background property can be set on classes, ids or directly on the HTML element.

```
.background, #background, body{  
background:#59365F }
```

If only the background color should be changed can be used:

```
.background{ background-color:#59365F }
```

This example shows the color as background, it is applied via the CSS property "background".

To optimize and compress your CSS code, you can use our [online CSS compressor and optimizer](#) based on csstidy. If you want to create a linear or radial gradient as background or border, check our [CSS Gradient Generator](#).



Hey! You found this booklet interesting? Support Converting Colors with the new Membership Option!

The pro membership hides all ads, plus gives you double the colors in the color bucket, and more awesome pro features!

**[Learn more, Memberships starting at \\$2.50/m!](#)**

**Follow me  
on Twitter!**

@ConvertingColor