

# Converting Colors

Hex(59442B)

Have a look what the booklet for  
Hex(59442B) contains.

<b>Hex(59442B)</b> .....	3
<b><i>Conversions</i></b> .....	4
<b><i>Details</i></b> .....	6
<b><i>Harmonies</i></b> .....	11
<b><i>Previews</i></b> .....	23
<b><i>Color Blindness Simulation</i></b> .....	26
<b><i>CSS Examples</i></b> .....	29

**Color**

**Hex(59442B)**

# Conversions

## Conversions Part 1

Format	Color
Hex	59442B
RGB	89, 68, 43
RGB Percent	35%, 27%, 17%
CMY	0.6510, 0.7333, 0.8314
CMYK	0.00, 0.24, 0.52, 0.65
HSL	33°, 35%, 26%
HSV	33°, 52%, 35%
XYZ	6.6230, 6.4325, 3.1780
YIQ	71.4290, 20.5410, -3.3230

# Conversions

## Conversions Part 2

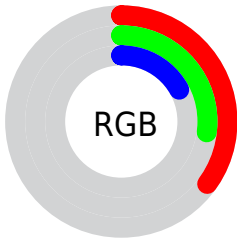
<b>Format</b>	<b>Color</b>
<b>RYB</b>	82, 89, 43
Decimal	5850155
CIELab	30.48, 5.41, 18.56
CIElCh	30, 19.330, 73.738
Yxy	6.4325, 0.4080, 0.3962
Android (android.graphics.Color)	4284040235 (0xFF59442B)
YUV	71.4290, -14.0155, 15.4098
Hunter-Lab	25.3624, 2.2283, 10.3244

# Details

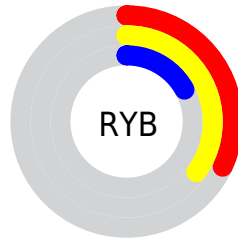
The Hex color **59442B** is a dark color, and the websafe version is hex **333300**. A complement of this color would be **2B4059**, and the grayscale version is **484848**.

A 20% lighter version of the original color is **8C7459**, and **2B1900** is the 20% darker color. If you saturate the color by 10%, you get **594022**, and if you desaturate by 10%, it is **594834**.

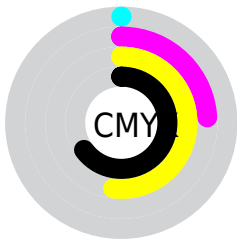
# Distribution



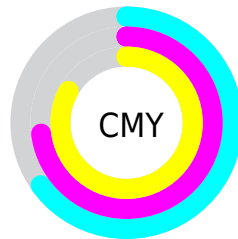
- Red (35%)
- Green (27%)
- Blue (17%)



- Red (32%)
- Yellow (35%)
- Blue (17%)



- Cyan (0%)
- Magenta (24%)
- Yellow (52%)
- Black (65%)



- Cyan (65%)
- Magenta (73%)
- Yellow (83%)

# Brightness & Saturation Gradients

These gradients show how the Hex color 59442B changes by changing the brightness by 10 percent. The first figure shows a shift by +10% for each color and the second figure -10%.

Similar to the brightness gradients but the following saturation gradients show a change of the Hex color 59442B by changing the saturation by 10% instead.





59442B



59442B

FFFFFF



412E16



8C7459



2B1900



A78E72



100000



C3A88B



000000



DFC3A5



FCDFC1



FFFCDD



FFFFFF9



59442B



59442B

■ 594022

■ 594834

■ 593C19

■ 594C3D

■ 593810

■ 595046

■ 593407

■ 59544F

■ 593000

■ 595858

■ 595C60

■ 596069

■ 596572

■ 59697B

# Harmonies

## Analogous

The Analogous color harmony consists of three colors that are next to each other on the color wheel.



623F34



59442B



4B492A

# Triad

The Triadic color harmony groups three colors that are evenly spaced from another and form a triangle on the color wheel.



59442B



15504E



52415E

# Complementary

The Complementary color scheme is a pair of colors which are on the opposite of each other on the color wheel.



59442B



2B4059

# Split Complementary

Split-complementary colors differ from the complementary color scheme. The scheme consists of three colors, the original color and two neighbors of the complement color.



3E4765



59442B



104F5C

# Square

The Square scheme is like the rectangle color scheme, but the four colors are evenly spaced on the color wheel.



59442B



284F3F



254C64



603D51

# Rectangle

The Rectangle color scheme consists of four colors that form a rectangle on the color wheel.



59442B



404C2E



254C64



4C4361



# Sweetspot

The Sweet Spot groups the original color and five complimentary colors.



59442B



736A60



592B40



3B3630



BABABA



3B3B3B



# Same Dimension

The Same Dimension uses a secret algorithm to generate beautiful new colors.



59442B



73522C



57592B



2B2927



6B3A00



EB8000



# Inverse Universe

The Inverse Universe completely reimagines the original color for something new.



2B4059



2C4C73



2D2B59



27292B



00316B

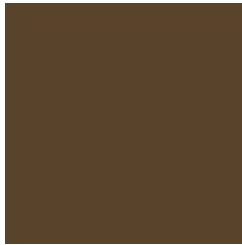


006BEB



# Previews

## White Background



This preview shows how the Hex color 59442B looks on a white background.

## Color Contrast Check

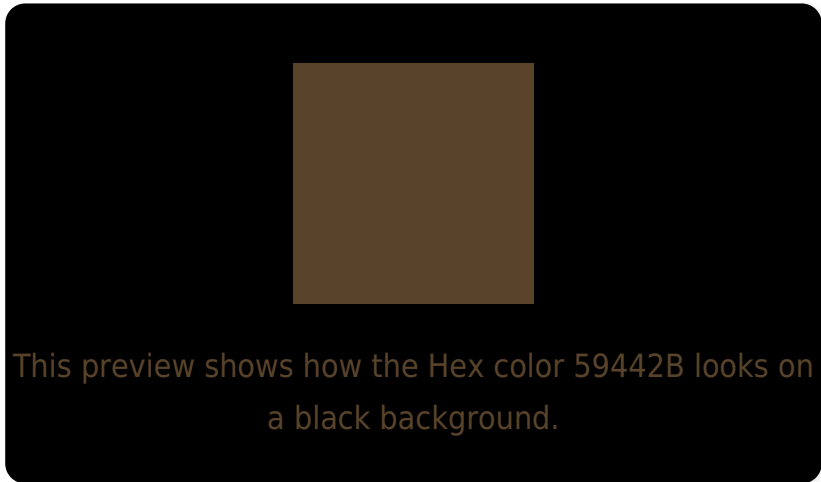
Large Text (above 18pt) WCAG AA ✓ Pass

Any Text WCAG AA ✓ Pass

Large Text (above 18pt) WCAG AAA ✓ Pass

Any Text WCAG AAA ✓ Pass

# Black Background



## Color Contrast Check

Large Text (above 18pt) WCAG AA × Fail

Any Text WCAG AA × Fail

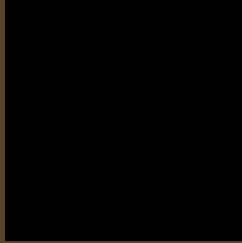
Large Text (above 18pt) WCAG AAA × Fail

Any Text WCAG AAA × Fail

If you want to check with other color combinations, try the [Color Contrast Checker](#).



## Hex 59442B Background



This preview shows how black text looks on a background with the Hex color 59442B.

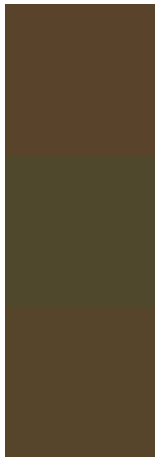


This preview shows how white text looks on a background with the Hex color 59442B.

# Color Blindness Simulation

Color vision deficiency is a very complex topic, and I could not describe the different causes any better than Wikipedia does, so if you want to learn more, you should check out their [article about color blindness](#).

## Dichromacy



**Original Color**  
59442B

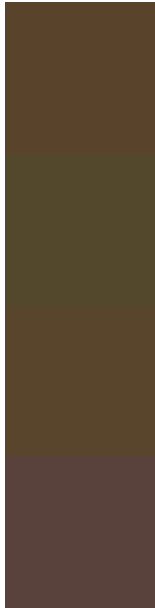
**Protanopia**  
4F482C

**Deuteranopia**  
57452B



**Tritanopia**  
5B4146

# Trichromacy



**Original Color**  
59442B

**Protanomaly**  
53472C

**Deuteranomaly**  
58452B

**Tritanomaly**  
5A423C

# Monochromacy



**Original Color**  
59442B

**Achromatopsia**  
474747

**Achromatomaly**  
4E463D

# CSS Examples

## Text

The CSS property to change the color of the text to Hex 59442B is called "color". The color property can be set on classes, ids or directly on the HTML element.

This example shows how text in the color #59442B looks like.

```
.text, #text, p{  
    color:#59442B  
}
```

If you want to add a text shadow in that color use the text-shadow property, you can generate a text shadow directly with our [CSS Text Shadow Generator](#).

Here you see how black text with a 4 pixel #59442B colored shadow looks like.

```
.shadow{ text-shadow: 4px 4px 2px #59442B
}
```

## Border

The CSS property to change the border of an element to Hex 59442B is called "border". The border property can be set on classes, ids or directly on the HTML element.

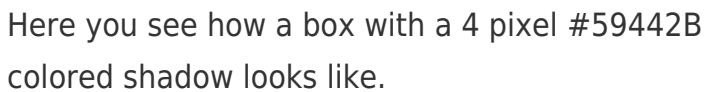
This example shows the color as border, it can be applied via the CSS property "border" or "border-color".

```
.border, #border, table{ border:4px solid
#59442B }
```

If only the border color should be changed use the property `border-color`.

```
.border{ border-color:#59442B }
```

If you want to add a box shadow in that color use:



Here you see how a box with a 4 pixel #59442B colored shadow looks like.

```
.boxshadow{ -moz-box-shadow:4px 4px 4px  
4px #59442B; -webkit-box-shadow:4px 4px  
4px 4px #59442B; box-shadow:4px 4px 4px  
4px #59442B }
```

# Background

The CSS property to change the background color of an element to Hex 59442B is called "background". The background property can be set on classes, ids or directly on the HTML element.

```
.background, #background, body{  
background:#59442B }
```

If only the background color should be changed can be used:

```
.background{ background-color:#59442B }
```

This example shows the color as background, it is applied via the CSS property "background".

To optimize and compress your CSS code, you can use our [online CSS compressor and optimizer](#) based on csstidy. If you want to create a linear or radial gradient as background or border, check our [CSS Gradient Generator](#).



Hey! You found this booklet interesting? Support Converting Colors with the new Membership Option!

The pro membership hides all ads, plus gives you double the colors in the color bucket, and more awesome pro features!

**[Learn more, Memberships starting at \\$2.50/m!](#)**

**Follow me  
on Twitter!**

@ConvertingColor