

# Converting Colors

Hex(5A3D47)

Have a look what the booklet for  
Hex(5A3D47) contains.

<b>Hex(5A3D47)</b> .....	3
<i><b>Conversions</b></i> .....	4
<i><b>Details</b></i> .....	6
<i><b>Harmonies</b></i> .....	11
<i><b>Previews</b></i> .....	23
<i><b>Color Blindness Simulation</b></i> .....	26
<i><b>CSS Examples</b></i> .....	29

**Color**

**Hex(5A3D47)**

# Conversions

## Conversions Part 1

Format	Color
Hex	5A3D47
RGB	90, 61, 71
RGB Percent	35%, 24%, 28%
CMY	0.6471, 0.7608, 0.7216
CMYK	0.00, 0.32, 0.21, 0.65
HSL	339°, 19%, 30%
HSV	339°, 32%, 35%
XYZ	7.0225, 5.9661, 6.7427
YIQ	70.8110, 14.0740, 9.2580

# Conversions

## Conversions Part 2

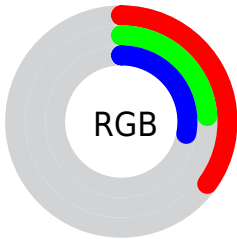
<b>Format</b>	<b>Color</b>
<b>RYB</b>	90, 61, 71
Decimal	5913927
CIELab	29.33, 14.43, -0.98
CIELCh	29, 14.467, 356.129
Yxy	5.9661, 0.3559, 0.3024
Android (android.graphics.Color)	4284104007 (0xFF5A3D47)
YUV	70.8110, 0.0932, 16.8288
Hunter-Lab	24.4256, 8.5753, 0.7309

# Details

The Hex color **5A3D47** is a dark color, and the websafe version is hex **663333**. A complement of this color would be **3D5A50**, and the grayscale version is **474747**.

A 20% lighter version of the original color is **8D6D77**, and **2B121C** is the 20% darker color. If you saturate the color by 10%, you get **5A3441**, and if you desaturate by 10%, it is **5A464D**.

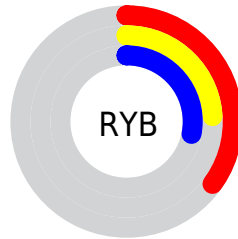
# Distribution



 Red (35%)

 Green (24%)

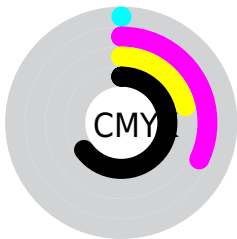
 Blue (28%)



 Red (35%)

 Yellow (24%)

 Blue (28%)

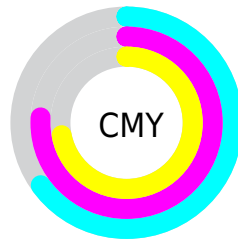


 Cyan (0%)

 Magenta (32%)

 Yellow (21%)

 Black (65%)



 Cyan (65%)

 Magenta (76%)

 Yellow (72%)

# Brightness & Saturation Gradients

These gradients show how the Hex color 5A3D47 changes by changing the brightness by 10 percent. The first figure shows a shift by +10% for each color and the second figure -10%.

Similar to the brightness gradients but the following saturation gradients show a change of the Hex color 5A3D47 by changing the saturation by 10% instead.



■ 5A3D47

■ 5A3D47

FFFFFF

■ 422731

■ 8D6D77

■ 2B121C

■ A78691

■ 180001

■ C3A0AB

■ 000000

■ DFBBC7

■ FBD7E3

■ FFF4FF

■ 5A3D47

■ 5A3D47

■ 5A3441

■ 5A464D

■ 5A2B3B

■ 5A4F53

■ 5A2235

■ 5A5859

■ 5A192F

■ 5A615F

■ 5A102A

■ 5A6A64

■ 5A0724

■ 5A736A

■ 5A001F

■ 5A7C70

■ 5A8576

■ 5A8E7C

# Harmonies

## Analogous

The Analogous color harmony consists of three colors that are next to each other on the color wheel.



523F52



5A3D47



5C3D3C

# Triad

The Triadic color harmony groups three colors that are evenly spaced from another and form a triangle on the color wheel.



5A3D47



434731



274A57

# Complementary

The Complementary color scheme is a pair of colors which are on the opposite of each other on the color wheel.



5A3D47



3D5A50

# Split Complementary

Split-complementary colors differ from the complementary color scheme. The scheme consists of three colors, the original color and two neighbors of the complement color.



234B4F



5A3D47



364A38

# Square

The Square scheme is like the rectangle color scheme, but the four colors are evenly spaced on the color wheel.



5A3D47



4F442F



2A4B43



35475B

# Rectangle

The Rectangle color scheme consists of four colors that form a rectangle on the color wheel.



5A3D47



593F35



2A4B43



244A55



# Sweetspot

The Sweet Spot groups the original color and five complimentary colors.



5A3D47



756A6E



503D5A



3B3436



BABABA



3B3B3B



# Same Dimension

The Same Dimension uses a secret algorithm to generate beautiful new colors.



5A3D47



754857



5A413D



2E292B



6E0026



ED0052



# Inverse Universe

The Inverse Universe completely reimagines the original color for something new.



5A3D47



754857



3D565A



2E292B



6E0026

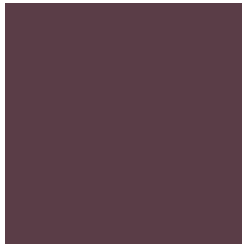


ED0052



# Previews

## White Background



This preview shows how the Hex color 5A3D47 looks on a white background.

## Color Contrast Check

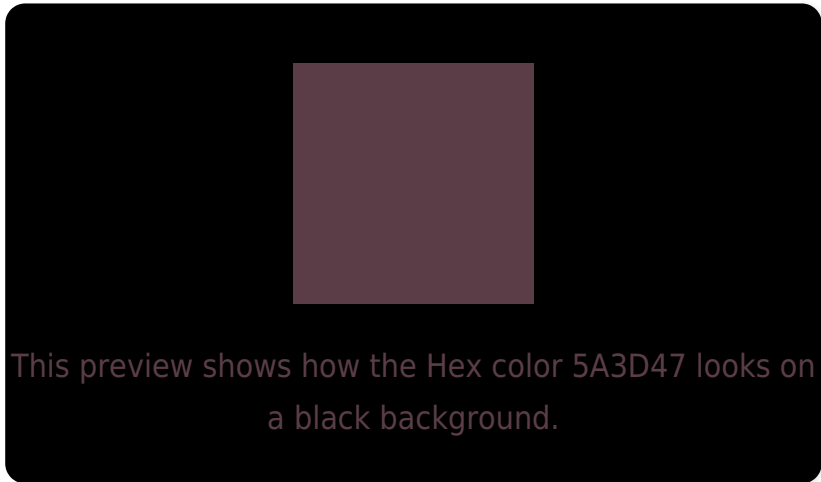
Large Text (above 18pt) WCAG AA ✓ Pass

Any Text WCAG AA ✓ Pass

Large Text (above 18pt) WCAG AAA ✓ Pass

Any Text WCAG AAA ✓ Pass

# Black Background



## Color Contrast Check

Large Text (above 18pt) WCAG AA × Fail

Any Text WCAG AA × Fail

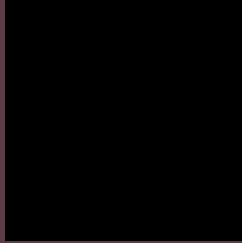
Large Text (above 18pt) WCAG AAA × Fail

Any Text WCAG AAA × Fail

If you want to check with other color combinations, try the [Color Contrast Checker](#).



## Hex 5A3D47 Background



This preview shows how black text looks on a background with the Hex color 5A3D47.



This preview shows how white text looks on a background with the Hex color 5A3D47.

# Color Blindness Simulation

Color vision deficiency is a very complex topic, and I could not describe the different causes any better than Wikipedia does, so if you want to learn more, you should check out their [article about color blindness](#).

## Dichromacy



**Original Color**  
5A3D47

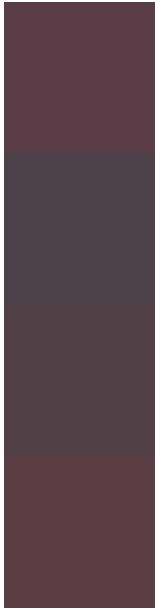
**Protanopia**  
45454C

**Deuteranopia**  
4C4346



**Tritanopia**  
5A3E42

# Trichromacy



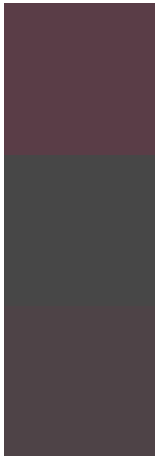
**Original Color**  
5A3D47

**Protanomaly**  
4D424A

**Deuteranomaly**  
514146

**Tritanomaly**  
5A3E44

# Monochromacy



**Original Color**  
5A3D47

**Achromatopsia**  
474747

**Achromatomaly**  
4E4347

# CSS Examples

## Text

The CSS property to change the color of the text to Hex 5A3D47 is called "color". The color property can be set on classes, ids or directly on the HTML element.

This example shows how text in the color #5A3D47 looks like.

```
.text, #text, p{  
    color:#5A3D47  
}
```

If you want to add a text shadow in that color use the text-shadow property, you can generate a text shadow directly with our [CSS Text Shadow Generator](#).

Here you see how black text with a 4 pixel #5A3D47 colored shadow looks like.

```
.shadow{ text-shadow: 4px 4px 2px #5A3D47
}
```

## Border

The CSS property to change the border of an element to Hex 5A3D47 is called "border". The border property can be set on classes, ids or directly on the HTML element.

This example shows the color as border, it can be applied via the CSS property "border" or "border-color".

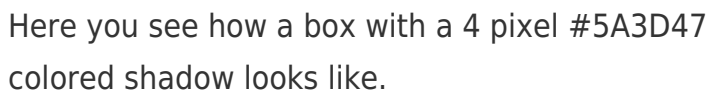
```
.border, #border, table{ border:4px solid
#5A3D47 }
```

If only the border color should be changed use the property `border-color`.

```
.border{ border-color:#5A3D47 }
```

If you want to add a box shadow in that color use:

Here you see how a box with a 4 pixel #5A3D47 colored shadow looks like.

A rectangular box with a dark blue border and a dark blue shadow. The box is white with a thin dark blue border. Below the box, there is a thick dark blue shadow that is wider on the left and right sides and tapers slightly towards the top and bottom edges.

```
.boxshadow{ -moz-box-shadow:4px 4px 4px  
4px #5A3D47; -webkit-box-shadow:4px 4px  
4px 4px #5A3D47; box-shadow:4px 4px 4px  
4px #5A3D47 }
```

# Background

The CSS property to change the background color of an element to Hex 5A3D47 is called "background". The background property can be set on classes, ids or directly on the HTML element.

```
.background, #background, body{  
background:#5A3D47 }
```

If only the background color should be changed can be used:

```
.background{ background-color:#5A3D47 }
```

This example shows the color as background, it is applied via the CSS property "background".

To optimize and compress your CSS code, you can use our [online CSS compressor and optimizer](#) based on csstidy. If you want to create a linear or radial gradient as background or border, check our [CSS Gradient Generator](#).



Hey! You found this booklet interesting? Support Converting Colors with the new Membership Option!

The pro membership hides all ads, plus gives you double the colors in the color bucket, and more awesome pro features!

**[Learn more, Memberships starting at \\$2.50/m!](#)**

**Follow me  
on Twitter!**

@ConvertingColor