

Converting Colors

Hex(5B3264)

Have a look what the booklet for
Hex(5B3264) contains.

Hex(5B3264)	3
<i>Conversions</i>	4
<i>Details</i>	6
<i>Harmonies</i>	11
<i>Previews</i>	23
<i>Color Blindness Simulation</i>	26
<i>CSS Examples</i>	29

Color

Hex(5B3264)

Conversions

Conversions Part 1

Format	Color
Hex	5B3264
RGB	91, 50, 100
RGB Percent	36%, 20%, 39%
CMY	0.6431, 0.8039, 0.6078
CMYK	0.09, 0.50, 0.00, 0.61
HSL	289°, 33%, 29%
HSV	289°, 50%, 39%
XYZ	7.7552, 5.4255, 12.6951
YIQ	67.9590, 8.3860, 24.2420

Conversions

Conversions Part 2

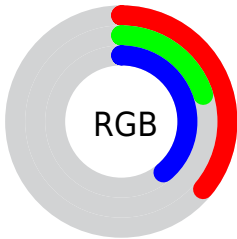
Format	Color
R_{YB}	91, 50, 100
Decimal	5976676
CIE _{Lab}	27.91, 27.58, -21.99
CIE _{LCh}	28, 35.275, 321.431
Yxy	5.4255, 0.2997, 0.2097
Android (android.graphics.Color)	4284166756 (0xFF5B3264)
YUV	67.9590, 15.7962, 20.2070
Hunter-Lab	23.2926, 18.6693, -16.0098

Details

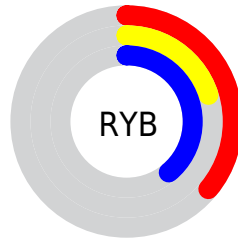
The Hex color **5B3264** is a dark color, and the websafe version is hex **663366**. A complement of this color would be **3B6432**, and the grayscale version is **444444**.

A 20% lighter version of the original color is **8E6297**, and **2B0535** is the 20% darker color. If you saturate the color by 10%, you get **592864**, and if you desaturate by 10%, it is **5D3C64**.

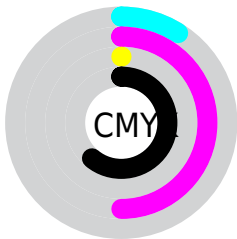
Distribution



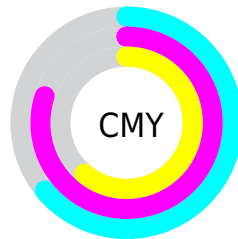
- Red (36%)
- Green (20%)
- Blue (39%)



- Red (36%)
- Yellow (20%)
- Blue (39%)



- Cyan (9%)
- Magenta (50%)
- Yellow (0%)
- Black (61%)



- Cyan (64%)
- Magenta (80%)
- Yellow (61%)
- Black (61%)

Brightness & Saturation Gradients

These gradients show how the Hex color 5B3264 changes by changing the brightness by 10 percent. The first figure shows a shift by +10% for each color and the second figure -10%.

Similar to the brightness gradients but the following saturation gradients show a change of the Hex color 5B3264 by changing the saturation by 10% instead.

■ 5B3264

■ 5B3264

FFFFFF

■ 431B4C

■ 8E6297

■ 2B0535

■ A97BB2

■ 160020

■ C595CD

■ 000003

■ E1B0EA

■ 000000

■ FECCFF

■ FFE8FF

■ 5B3264

■ 5B3264

■ 592864

■ 5D3C64

■ 571E64

■ 5F4664

■ 561464

■ 605064

■ 540A64

■ 625A64

■ 520064

■ 646464

■ 666E64

■ 687864

■ 698264

■ 6B8C64

Harmonies

Analogous

The Analogous color harmony consists of three colors that are next to each other on the color wheel.



333E75



5B3264



6F294B

Triad

The Triadic color harmony groups three colors that are evenly spaced from another and form a triangle on the color wheel.



5B3264



563E06



004F55

Complementary

The Complementary color scheme is a pair of colors which are on the opposite of each other on the color wheel.



5B3264



3B6432

Split Complementary

Split-complementary colors differ from the complementary color scheme. The scheme consists of three colors, the original color and two neighbors of the complement color.



004E39



5B3264



3D4609

Square

The Square scheme is like the rectangle color scheme, but the four colors are evenly spaced on the color wheel.



5B3264



693318



1A4C1E



004D6C

Rectangle

The Rectangle color scheme consists of four colors that form a rectangle on the color wheel.



5B3264



732839



1A4C1E



004F4C

Sweetspot

The Sweet Spot groups the original color and five complimentary colors.



5B3264



7F6F82



323B64



403642



C2C2C2



424242

Same Dimension

The Same Dimension uses a secret algorithm to generate beautiful new colors.



5B3264



743482



643254



322E33



5E0073



C700F2

Inverse Universe

The Inverse Universe completely reimagines the original color for something new.



64323B



823442



326442



332E2F



730015



F2002C

Previews

White Background



This preview shows how the Hex color 5B3264 looks on a white background.

Color Contrast Check

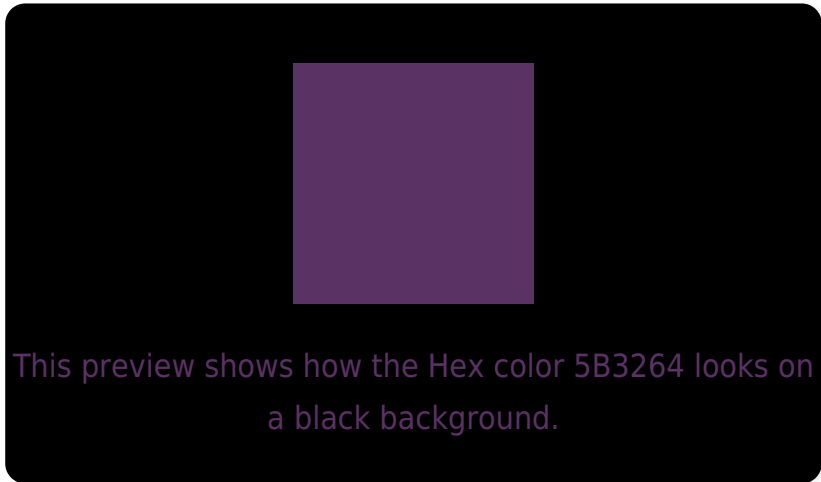
Large Text (above 18pt) WCAG AA ✓ Pass

Any Text WCAG AA ✓ Pass

Large Text (above 18pt) WCAG AAA ✓ Pass

Any Text WCAG AAA ✓ Pass

Black Background



Color Contrast Check

Large Text (above 18pt) WCAG AA × Fail

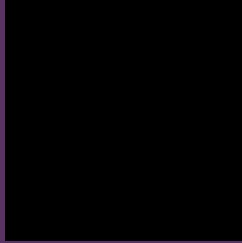
Any Text WCAG AA × Fail

Large Text (above 18pt) WCAG AAA × Fail

Any Text WCAG AAA × Fail

If you want to check with other color combinations, try the [Color Contrast Checker](#).

Hex 5B3264 Background



This preview shows how black text looks on a background with the Hex color 5B3264.



This preview shows how white text looks on a background with the Hex color 5B3264.

Color Blindness Simulation

Color vision deficiency is a very complex topic, and I could not describe the different causes any better than Wikipedia does, so if you want to learn more, you should check out their [article about color blindness](#).

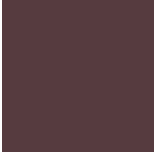
Dichromacy



Original Color
5B3264

Protanopia
2E4171

Deuteranopia
364261



Tritanopia
563B3F

Trichromacy



Original Color
5B3264

Protanomaly
3E3C6C

Deuteranomaly
433C62

Tritanomaly
58384C

Monochromacy



Original Color
5B3264

Achromatopsia
444444

Achromatomaly
4C3D50

CSS Examples

Text

The CSS property to change the color of the text to Hex 5B3264 is called "color". The color property can be set on classes, ids or directly on the HTML element.

This example shows how text in the color #5B3264 looks like.

```
.text, #text, p{  
    color:#5B3264  
}
```

If you want to add a text shadow in that color use the text-shadow property, you can generate a text shadow directly with our [CSS Text Shadow Generator](#).

Here you see how black text with a 4 pixel #5B3264 colored shadow looks like.

```
.shadow{ text-shadow: 4px 4px 2px #5B3264
}
```

Border

The CSS property to change the border of an element to Hex 5B3264 is called "border". The border property can be set on classes, ids or directly on the HTML element.

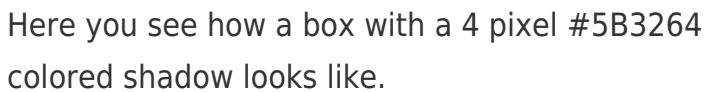
This example shows the color as border, it can be applied via the CSS property "border" or "border-color".

```
.border, #border, table{ border:4px solid
#5B3264 }
```

If only the border color should be changed use the property `border-color`.

```
.border{ border-color:#5B3264 }
```

If you want to add a box shadow in that color use:



Here you see how a box with a 4 pixel #5B3264 colored shadow looks like.

```
.boxshadow{ -moz-box-shadow:4px 4px 4px  
4px #5B3264; -webkit-box-shadow:4px 4px  
4px 4px #5B3264; box-shadow:4px 4px 4px  
4px #5B3264 }
```

Background

The CSS property to change the background color of an element to Hex 5B3264 is called "background". The background property can be set on classes, ids or directly on the HTML element.

```
.background, #background, body{  
background:#5B3264 }
```

If only the background color should be changed can be used:

```
.background{ background-color:#5B3264 }
```

This example shows the color as background, it is applied via the CSS property "background".

To optimize and compress your CSS code, you can use our [online CSS compressor and optimizer](#) based on csstidy. If you want to create a linear or radial gradient as background or border, check our [CSS Gradient Generator](#).

Hey! You found this booklet
interesting? Support Converting
Colors with the new Membership
Option!

The pro membership hides all ads, plus gives you
double the colors in the color bucket, and more
awesome pro features!

[Learn more, Memberships starting at \\$2.50/m!](#)

**Follow me
on Twitter!**

@ConvertingColor