

# Converting Colors

Hex(5B3431)

Have a look what the booklet for  
Hex(5B3431) contains.

<b>Hex(5B3431)</b> .....	3
<b><i>Conversions</i></b> .....	4
<b><i>Details</i></b> .....	6
<b><i>Harmonies</i></b> .....	11
<b><i>Previews</i></b> .....	23
<b><i>Color Blindness Simulation</i></b> .....	26
<b><i>CSS Examples</i></b> .....	29

**Color**

**Hex(5B3431)**

# Conversions

## Conversions Part 1

Format	Color
Hex	5B3431
RGB	91, 52, 49
RGB Percent	36%, 20%, 19%
CMY	0.6431, 0.7961, 0.8078
CMYK	0.00, 0.43, 0.46, 0.64
HSL	4°, 30%, 27%
HSV	4°, 46%, 36%
XYZ	6.0968, 4.9019, 3.5306
YIQ	63.3190, 24.2070, 7.3350

# Conversions

## Conversions Part 2

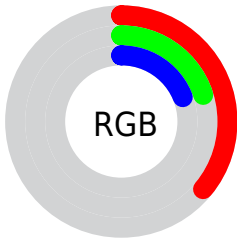
<b>Format</b>	<b>Color</b>
<b>R<sub>Y</sub>B</b>	91, 52, 49
Decimal	5977137
CIE Lab	26.45, 17.16, 9.42
CIE LCh	26, 19.577, 28.761
Yxy	4.9019, 0.4196, 0.3374
Android (android.graphics.Color)	4284167217 (0xFF5B3431)
YUV	63.3190, -7.0593, 24.2762
Hunter-Lab	22.1402, 10.4083, 6.0435

# Details

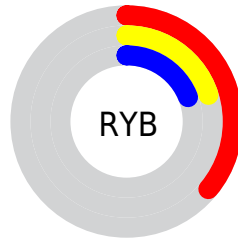
The Hex color **5B3431** is a dark color, and the websafe version is hex **663333**. A complement of this color would be **31585B**, and the grayscale version is **3F3F3F**.

A 20% lighter version of the original color is **8F635F**, and **2C0801** is the 20% darker color. If you saturate the color by 10%, you get **5B2C28**, and if you desaturate by 10%, it is **5B3C3A**.

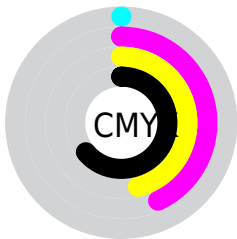
# Distribution



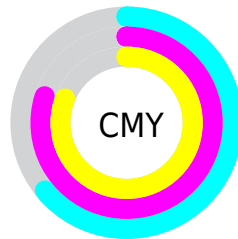
- Red (36%)
- Green (20%)
- Blue (19%)



- Red (36%)
- Yellow (20%)
- Blue (19%)



- Cyan (0%)
- Magenta (43%)
- Yellow (46%)
- Black (64%)



- Cyan (64%)
- Magenta (80%)
- Yellow (81%)

# Brightness & Saturation Gradients

These gradients show how the Hex color 5B3431 changes by changing the brightness by 10 percent. The first figure shows a shift by +10% for each color and the second figure -10%.

Similar to the brightness gradients but the following saturation gradients show a change of the Hex color 5B3431 by changing the saturation by 10% instead.



 5B3431

 5B3431

FFFFFF

 421E1C

 8F635F

 2C0801

 AA7C78

 050000

 C69691

 000000

 E2B1AC

 FFCDC7

 FFE9E3

 5B3431

 5B3431

 5B2C28

 5B3C3A

■ 5B231F

■ 5B4543

■ 5B1B16

■ 5B4D4C

■ 5B120D

■ 5B5655

■ 5B0A03

■ 5B5E5F

■ 5B0600

■ 5B6768

■ 5B6F71

■ 5B787A

■ 5B8083

# Harmonies

## Analogous

The Analogous color harmony consists of three colors that are next to each other on the color wheel.



5A3340



5B3431



553826

# Triad

The Triadic color harmony groups three colors that are evenly spaced from another and form a triangle on the color wheel.



5B3431



28452F



27405C

# Complementary

The Complementary color scheme is a pair of colors which are on the opposite of each other on the color wheel.



5B3431



31585B

# Split Complementary

Split-complementary colors differ from the complementary color scheme. The scheme consists of three colors, the original color and two neighbors of the complement color.



084458



5B3431



12463D

# Square

The Square scheme is like the rectangle color scheme, but the four colors are evenly spaced on the color wheel.



5B3431



394224



00464C



3F3B59

# Rectangle

The Rectangle color scheme consists of four colors that form a rectangle on the color wheel.



5B3431



4D3C21



00464C



1E425C



# Sweetspot

The Sweet Spot groups the original color and five complimentary colors.



5B3431



756665



5B3158



3B3131



BABABA



3B3B3B



# Same Dimension

The Same Dimension uses a secret algorithm to generate beautiful new colors.



5B3431



753935



5B4931



2E2A29



6E0800



ED1100



# Inverse Universe

The Inverse Universe completely reimagines the original color for something new.



31585B



357175



31435B



292E2E



00666E

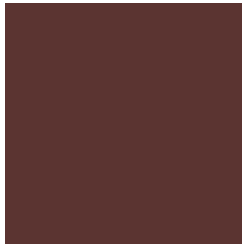


00DCED



# Previews

## White Background



This preview shows how the Hex color 5B3431 looks on a white background.

## Color Contrast Check

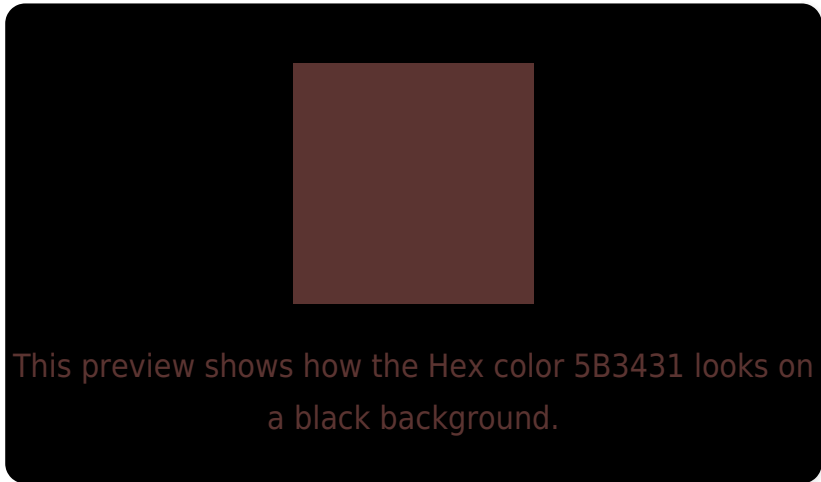
Large Text (above 18pt) WCAG AA ✓ Pass

Any Text WCAG AA ✓ Pass

Large Text (above 18pt) WCAG AAA ✓ Pass

Any Text WCAG AAA ✓ Pass

# Black Background



## Color Contrast Check

Large Text (above 18pt) WCAG AA × Fail

Any Text WCAG AA × Fail

Large Text (above 18pt) WCAG AAA × Fail

Any Text WCAG AAA × Fail

If you want to check with other color combinations, try the [Color Contrast Checker](#).



## Hex 5B3431 Background



This preview shows how black text looks on a background with the Hex color 5B3431.



This preview shows how white text looks on a background with the Hex color 5B3431.

# Color Blindness Simulation

Color vision deficiency is a very complex topic, and I could not describe the different causes any better than Wikipedia does, so if you want to learn more, you should check out their [article about color blindness](#).


## Dichromacy



**Original Color**  
5B3431

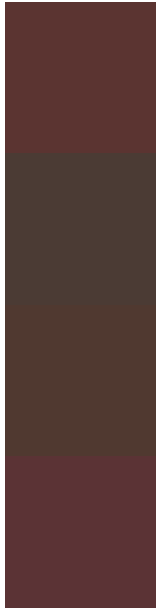
**Protanopia**  
423F36

**Deuteranopia**  
4A3C2F



**Tritanopia**  
5B3337

# Trichromacy



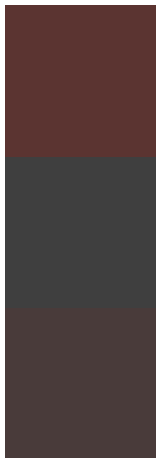
**Original Color**  
5B3431

**Protanomaly**  
4B3B34

**Deuteranomaly**  
503930

**Tritanomaly**  
5B3335

# Monochromacy



**Original Color**  
5B3431

**Achromatopsia**  
3F3F3F

**Achromatomaly**  
493B3A

# CSS Examples

## Text

The CSS property to change the color of the text to Hex 5B3431 is called "color". The color property can be set on classes, ids or directly on the HTML element.

This example shows how text in the color #5B3431 looks like.

```
.text, #text, p{  
    color:#5B3431  
}
```

If you want to add a text shadow in that color use the text-shadow property, you can generate a text shadow directly with our [CSS Text Shadow Generator](#).

Here you see how black text with a 4 pixel #5B3431 colored shadow looks like.

```
.shadow{ text-shadow: 4px 4px 2px #5B3431
}
```

## Border

The CSS property to change the border of an element to Hex 5B3431 is called "border". The border property can be set on classes, ids or directly on the HTML element.

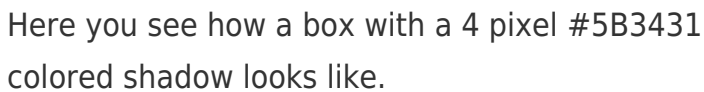
This example shows the color as border, it can be applied via the CSS property "border" or "border-color".

```
.border, #border, table{ border:4px solid
#5B3431 }
```

If only the border color should be changed use the property `border-color`.

```
.border{ border-color:#5B3431 }
```

If you want to add a box shadow in that color use:



Here you see how a box with a 4 pixel #5B3431 colored shadow looks like.

```
.boxshadow{ -moz-box-shadow:4px 4px 4px  
4px #5B3431; -webkit-box-shadow:4px 4px  
4px 4px #5B3431; box-shadow:4px 4px 4px  
4px #5B3431 }
```

# Background

The CSS property to change the background color of an element to Hex 5B3431 is called "background". The background property can be set on classes, ids or directly on the HTML element.

```
.background, #background, body{  
background:#5B3431 }
```

If only the background color should be changed can be used:

```
.background{ background-color:#5B3431 }
```

This example shows the color as background, it is applied via the CSS property "background".

To optimize and compress your CSS code, you can use our [online CSS compressor and optimizer](#) based on csstidy. If you want to create a linear or radial gradient as background or border, check our [CSS Gradient Generator](#).



Hey! You found this booklet interesting? Support Converting Colors with the new Membership Option!

The pro membership hides all ads, plus gives you double the colors in the color bucket, and more awesome pro features!

**[Learn more, Memberships starting at \\$2.50/m!](#)**

**Follow me  
on Twitter!**

**@ConvertingColor**