

# Converting Colors

Hex(5C267E)

Have a look what the booklet for  
Hex(5C267E) contains.

<b>Hex(5C267E)</b> .....	3
<b><i>Conversions</i></b> .....	4
<b><i>Details</i></b> .....	6
<b><i>Harmonies</i></b> .....	11
<b><i>Previews</i></b> .....	23
<b><i>Color Blindness Simulation</i></b> .....	26
<b><i>CSS Examples</i></b> .....	29

# Color

**Hex(5C267E)**

# Conversions

## Conversions Part 1

<b>Format</b>	<b>Color</b>
Hex	5C267E
RGB	92, 38, 126
RGB Percent	36%, 15%, 49%
CMY	0.6392, 0.8510, 0.5059
CMYK	0.27, 0.70, 0.00, 0.51
HSL	277°, 54%, 32%
HSV	277°, 70%, 49%
XYZ	8.8726, 5.1679, 20.2685
YIQ	64.1780, 3.9360, 38.8160

# Conversions

## Conversions Part 2

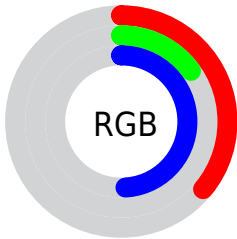
<b>Format</b>	<b>Color</b>
<b>R<sub>YB</sub></b>	92, 38, 126
Decimal	6039166
CIE <sub>Lab</sub>	27.21, 40.58, -39.70
CIE <sub>LCh</sub>	27, 56.767, 315.625
Yxy	5.1679, 0.2586, 0.1506
Android (android.graphics.Color)	4284229246 (0xFF5C267E)
YUV	64.1780, 30.4782, 24.3999
Hunter-Lab	22.7330, 29.8854, -36.9493

# Details

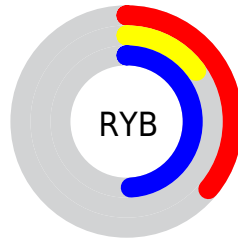
The Hex color **5C267E** is a dark color, and the websafe version is hex **663399**. A complement of this color would be **487E26**, and the grayscale version is **404040**.

A 20% lighter version of the original color is **9157B3**, and **29004C** is the 20% darker color. If you saturate the color by 10%, you get **57197E**, and if you desaturate by 10%, it is **61337E**.

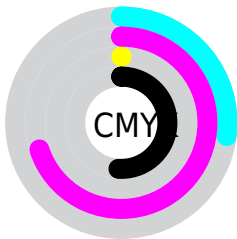
# Distribution



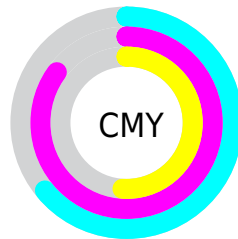
- Red (36%)
- Green (15%)
- Blue (49%)



- Red (36%)
- Yellow (15%)
- Blue (49%)



- Cyan (27%)
- Magenta (70%)
- Yellow (0%)
- Black (51%)



- Cyan (64%)
- Magenta (85%)
- Yellow (51%)

# Brightness & Saturation Gradients

These gradients show how the Hex color 5C267E changes by changing the brightness by 10 percent. The first figure shows a shift by +10% for each color and the second figure -10%.

Similar to the brightness gradients but the following saturation gradients show a change of the Hex color 5C267E by changing the saturation by 10% instead.





5C267E



5C267E

FFFFFF



420B65



9157B3



29004C



AD71CF



120035



C98BEC



00021E



E6A6FF



000001



FFC2FF



000000



FFDEFF



FFFBFF



5C267E



5C267E

■ 57197E

■ 61337E

■ 520D7E

■ 663F7E

■ 4D007E

■ 6B4C7E

■ 6F587E

■ 74657E

■ 79727E

■ 7E7E7E

■ 838B7E

■ 88977E

# Harmonies

## Analogous

The Analogous color harmony consists of three colors that are next to each other on the color wheel.



003E96



5C267E



810057

# Triad

The Triadic color harmony groups three colors that are evenly spaced from another and form a triangle on the color wheel.



5C267E



613700



005257

# Complementary

The Complementary color scheme is a pair of colors which are on the opposite of each other on the color wheel.



5C267E



487E26

# Split Complementary

Split-complementary colors differ from the complementary color scheme. The scheme consists of three colors, the original color and two neighbors of the complement color.



005129



5C267E



3B4500

# Square

The Square scheme is like the rectangle color scheme, but the four colors are evenly spaced on the color wheel.



5C267E



7C1D00



004D00



00517E

# Rectangle

The Rectangle color scheme consists of four colors that form a rectangle on the color wheel.



5C267E



89003A



004D00



005248



# Sweetspot

The Sweet Spot groups the original color and five complimentary colors.



5C267E



9681A3



26497E



4A3D52



D1D1D1



525252



# Same Dimension

The Same Dimension uses a secret algorithm to generate beautiful new colors.



5C267E



6E1AA3



7E2675



3D3940



4E0080



000000



# Inverse Universe

The Inverse Universe completely reimagines the original color for something new.



7E2648



A31A4F



267E2F



40393C



800031

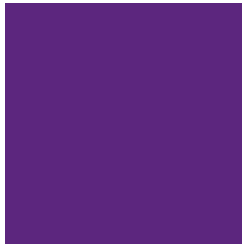


000000



# Previews

## White Background



This preview shows how the Hex color 5C267E looks on a white background.

## Color Contrast Check

Large Text (above 18pt) WCAG AA ✓ Pass

Any Text WCAG AA ✓ Pass

Large Text (above 18pt) WCAG AAA ✓ Pass

Any Text WCAG AAA ✓ Pass

# Black Background



## Color Contrast Check

Large Text (above 18pt) WCAG AA × Fail

Any Text WCAG AA × Fail

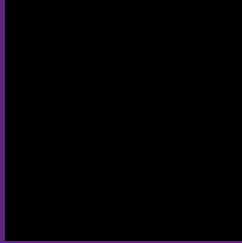
Large Text (above 18pt) WCAG AAA × Fail

Any Text WCAG AAA × Fail

If you want to check with other color combinations, try the [Color Contrast Checker](#).



## Hex 5C267E Background



This preview shows how black text looks on a background with the Hex color 5C267E.



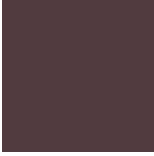
This preview shows how white text looks on a background with the Hex color 5C267E.

# Color Blindness Simulation

Color vision deficiency is a very complex topic, and I could not describe the different causes any better than Wikipedia does, so if you want to learn more, you should check out their [article about color blindness](#).

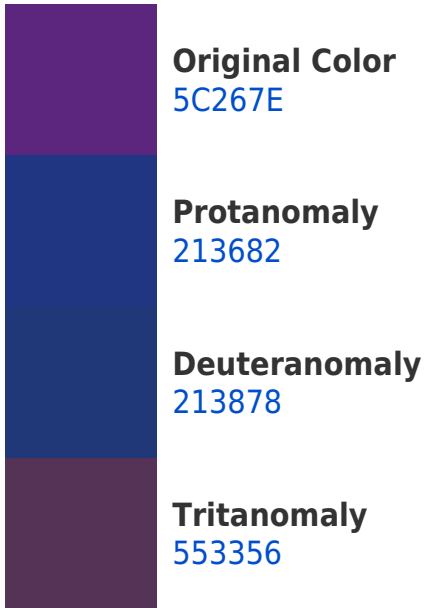
## Dichromacy



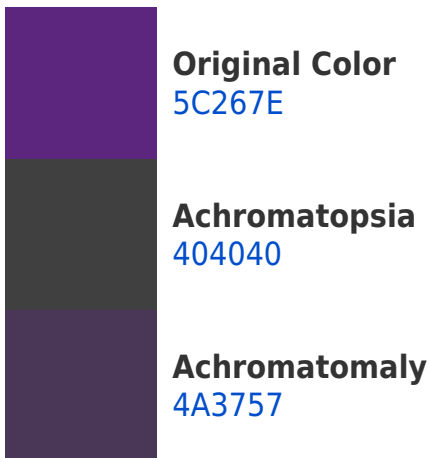


**Tritanopia**  
513B3F

# Trichromacy



# Monochromacy



# CSS Examples

## Text

The CSS property to change the color of the text to Hex 5C267E is called "color". The color property can be set on classes, ids or directly on the HTML element.

This example shows how text in the color #5C267E looks like.

```
.text, #text, p{  
    color:#5C267E  
}
```

If you want to add a text shadow in that color use the text-shadow property, you can generate a text shadow directly with our [CSS Text Shadow Generator](#).

Here you see how black text with a 4 pixel #5C267E colored shadow looks like.

```
.shadow{ text-shadow: 4px 4px 2px #5C267E
}
```

## Border

The CSS property to change the border of an element to Hex 5C267E is called "border". The border property can be set on classes, ids or directly on the HTML element.

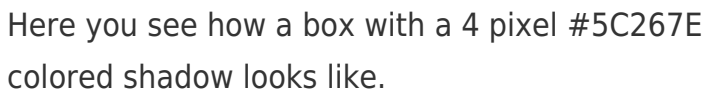
This example shows the color as border, it can be applied via the CSS property "border" or "border-color".

```
.border, #border, table{ border:4px solid
#5C267E }
```

If only the border color should be changed use the property `border-color`.

```
.border{ border-color:#5C267E }
```

If you want to add a box shadow in that color use:



Here you see how a box with a 4 pixel #5C267E colored shadow looks like.

```
.boxshadow{ -moz-box-shadow:4px 4px 4px  
4px #5C267E; -webkit-box-shadow:4px 4px  
4px 4px #5C267E; box-shadow:4px 4px 4px  
4px #5C267E }
```

# Background

The CSS property to change the background color of an element to Hex 5C267E is called "background". The background property can be set on classes, ids or directly on the HTML element.

```
.background, #background, body{  
background:#5C267E }
```

If only the background color should be changed can be used:

```
.background{ background-color:#5C267E }
```

This example shows the color as background, it is applied via the CSS property "background".

To optimize and compress your CSS code, you can use our [online CSS compressor and optimizer](#) based on csstidy. If you want to create a linear or radial gradient as background or border, check our [CSS Gradient Generator](#).



# Hey! You found this booklet interesting? Support Converting Colors with the new Membership Option!

The pro membership hides all ads, plus gives you double the colors in the color bucket, and more awesome pro features!

**[Learn more, Memberships starting at \\$2.50/m!](#)**

**Follow me  
on Twitter!**

@ConvertingColor