

Converting Colors

Hex(5C3D50)

Have a look what the booklet for
Hex(5C3D50) contains.

Hex(5C3D50)	3
<i>Conversions</i>	4
<i>Details</i>	6
<i>Harmonies</i>	11
<i>Previews</i>	23
<i>Color Blindness Simulation</i>	26
<i>CSS Examples</i>	29

Color

Hex(5C3D50)

Conversions

Conversions Part 1

Format	Color
Hex	5C3D50
RGB	92, 61, 80
RGB Percent	36%, 24%, 31%
CMY	0.6392, 0.7608, 0.6863
CMYK	0.00, 0.34, 0.13, 0.64
HSL	323°, 20%, 30%
HSV	323°, 34%, 36%
XYZ	7.5303, 6.1920, 8.3877
YIQ	72.4350, 12.3770, 12.4810

Conversions

Conversions Part 2

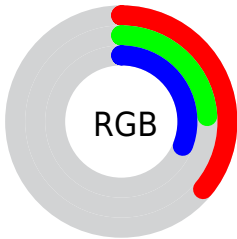
Format	Color
RYB	92, 61, 80
Decimal	6045008
CIELab	29.89, 16.94, -5.98
CIELCh	30, 17.962, 340.569
Yxy	6.1920, 0.3406, 0.2801
Android (android.graphics.Color)	4284235088 (0xFF5C3D50)
YUV	72.4350, 3.7295, 17.1585
Hunter-Lab	24.8837, 10.4715, -2.5666

Details

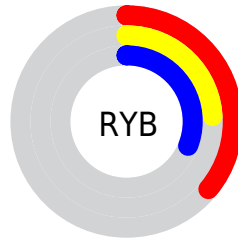
The Hex color **5C3D50** is a dark color, and the websafe version is hex **663333**. A complement of this color would be **3D5C49**, and the grayscale version is **484848**.

A 20% lighter version of the original color is **8F6D81**, and **2D1224** is the 20% darker color. If you saturate the color by 10%, you get **5C344C**, and if you desaturate by 10%, it is **5C4654**.

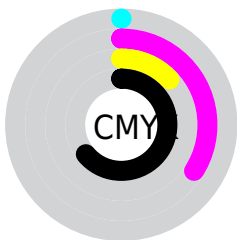
Distribution



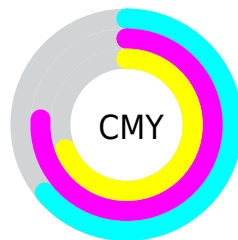
- Red (36%)
- Green (24%)
- Blue (31%)



- Red (36%)
- Yellow (24%)
- Blue (31%)



- Cyan (0%)
- Magenta (34%)
- Yellow (13%)
- Black (64%)



- Cyan (64%)
- Magenta (76%)
- Yellow (69%)

Brightness & Saturation Gradients

These gradients show how the Hex color 5C3D50 changes by changing the brightness by 10 percent. The first figure shows a shift by +10% for each color and the second figure -10%.

Similar to the brightness gradients but the following saturation gradients show a change of the Hex color 5C3D50 by changing the saturation by 10% instead.

■ 5C3D50

■ 5C3D50

FFFFFF

■ 442739

■ 8F6D81

■ 2D1224

■ A9869B

■ 1B000E

■ C5A1B6

■ 000000

■ E1BCD2

■ FED8EE

■ FFF4FF

■ 5C3D50

■ 5C3D50

■ 5C344C

■ 5C4654

■ 5C2B49

■ 5C4F57

■ 5C2145

■ 5C595B

■ 5C1842

■ 5C625E

■ 5C0F3E

■ 5C6B62

■ 5C063B

■ 5C7465

■ 5C0038

■ 5C7D69

■ 5C876C

■ 5C9070

Harmonies

Analogous

The Analogous color harmony consists of three colors that are next to each other on the color wheel.



4E415C



5C3D50



623C42

Triad

The Triadic color harmony groups three colors that are evenly spaced from another and form a triangle on the color wheel.



5C3D50



4B472B



164D58

Complementary

The Complementary color scheme is a pair of colors which are on the opposite of each other on the color wheel.



5C3D50



3D5C49

Split Complementary

Split-complementary colors differ from the complementary color scheme. The scheme consists of three colors, the original color and two neighbors of the complement color.



1B4E4B



5C3D50



3C4B31

Square

The Square scheme is like the rectangle color scheme, but the four colors are evenly spaced on the color wheel.



5C3D50



58422C



2B4D3D



254A60

Rectangle

The Rectangle color scheme consists of four colors that form a rectangle on the color wheel.



5C3D50



613D39



2B4D3D



154E54

Sweetspot

The Sweet Spot groups the original color and five complimentary colors.



5C3D50



786C73



493D5C



3D363A



BDBDBD



3D3D3D

Same Dimension

The Same Dimension uses a secret algorithm to generate beautiful new colors.



5C3D50



784865



5C3D41



2E292C



6E0043



ED0091

Inverse Universe

The Inverse Universe completely reimagines the original color for something new.



5C3D50



784865



3D5C58



2E292C



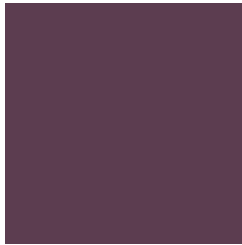
6E0043



ED0091

Previews

White Background



This preview shows how the Hex color 5C3D50 looks on a white background.

Color Contrast Check

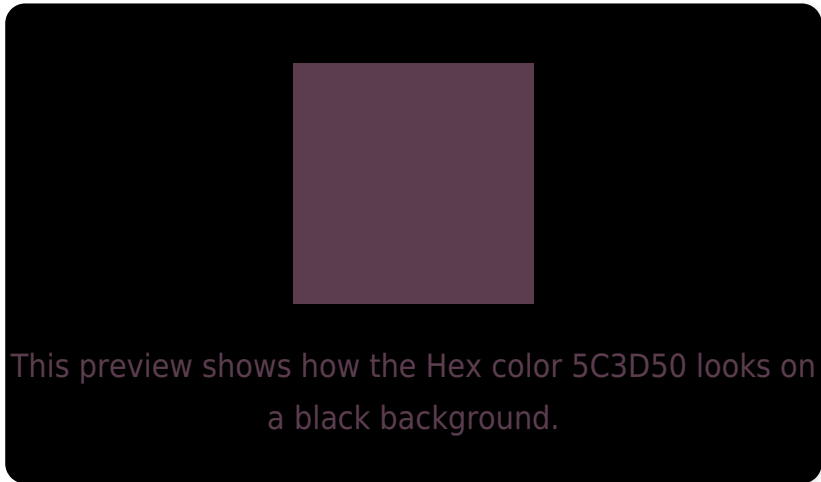
Large Text (above 18pt) WCAG AA ✓ Pass

Any Text WCAG AA ✓ Pass

Large Text (above 18pt) WCAG AAA ✓ Pass

Any Text WCAG AAA ✓ Pass

Black Background



Color Contrast Check

Large Text (above 18pt) WCAG AA × Fail

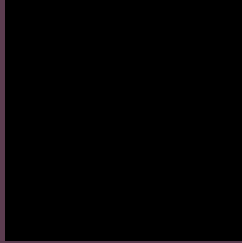
Any Text WCAG AA × Fail

Large Text (above 18pt) WCAG AAA × Fail

Any Text WCAG AAA × Fail

If you want to check with other color combinations, try the [Color Contrast Checker](#).

Hex 5C3D50 Background



This preview shows how black text looks on a background with the Hex color 5C3D50.



This preview shows how white text looks on a background with the Hex color 5C3D50.

Color Blindness Simulation

Color vision deficiency is a very complex topic, and I could not describe the different causes any better than Wikipedia does, so if you want to learn more, you should check out their [article about color blindness](#).

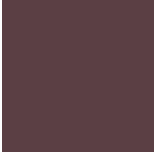
Dichromacy



Original Color
5C3D50

Protanopia
434656

Deuteranopia
4A454F



Tritanopia
5B3F44

Trichromacy



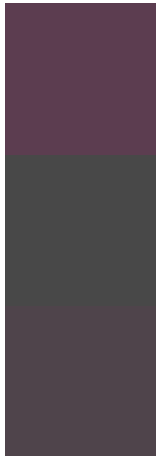
Original Color
5C3D50

Protanomaly
4C4354

Deuteranomaly
51424F

Tritanomaly
5B3E48

Monochromacy



Original Color
5C3D50

Achromatopsia
484848

Achromatomaly
4F444B

CSS Examples

Text

The CSS property to change the color of the text to Hex 5C3D50 is called "color". The color property can be set on classes, ids or directly on the HTML element.

This example shows how text in the color #5C3D50 looks like.

```
.text, #text, p{  
    color:#5C3D50  
}
```

If you want to add a text shadow in that color use the text-shadow property, you can generate a text shadow directly with our [CSS Text Shadow Generator](#).

Here you see how black text with a 4 pixel #5C3D50 colored shadow looks like.

```
.shadow{ text-shadow: 4px 4px 2px #5C3D50
}
```

Border

The CSS property to change the border of an element to Hex 5C3D50 is called "border". The border property can be set on classes, ids or directly on the HTML element.

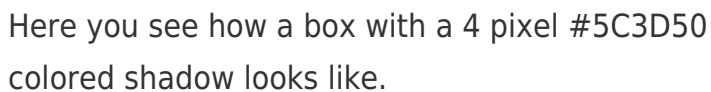
This example shows the color as border, it can be applied via the CSS property "border" or "border-color".

```
.border, #border, table{ border:4px solid
#5C3D50 }
```

If only the border color should be changed use the property `border-color`.

```
.border{ border-color:#5C3D50 }
```

If you want to add a box shadow in that color use:



Here you see how a box with a 4 pixel #5C3D50 colored shadow looks like.

```
.boxshadow{ -moz-box-shadow:4px 4px 4px  
4px #5C3D50; -webkit-box-shadow:4px 4px  
4px 4px #5C3D50; box-shadow:4px 4px 4px  
4px #5C3D50 }
```

Background

The CSS property to change the background color of an element to Hex 5C3D50 is called "background". The background property can be set on classes, ids or directly on the HTML element.

```
.background, #background, body{  
background:#5C3D50 }
```

If only the background color should be changed can be used:

```
.background{ background-color:#5C3D50 }
```

This example shows the color as background, it is applied via the CSS property "background".

To optimize and compress your CSS code, you can use our [online CSS compressor and optimizer](#) based on csstidy. If you want to create a linear or radial gradient as background or border, check our [CSS Gradient Generator](#).

Hey! You found this booklet interesting? Support Converting Colors with the new Membership Option!

The pro membership hides all ads, plus gives you double the colors in the color bucket, and more awesome pro features!

[Learn more, Memberships starting at \\$2.50/m!](#)

**Follow me
on Twitter!**

@ConvertingColor