

# Converting Colors

Hex(5C4040)

Have a look what the booklet for  
Hex(5C4040) contains.

|  |    |
|--|----|
| <b>Hex(5C4040)</b> .....                       | 3  |
| <b><i>Conversions</i></b> .....                | 4  |
| <b><i>Details</i></b> .....                    | 6  |
| <b><i>Harmonies</i></b> .....                  | 11 |
| <b><i>Previews</i></b> .....                   | 23 |
| <b><i>Color Blindness Simulation</i></b> ..... | 26 |
| <b><i>CSS Examples</i></b> .....               | 29 |

**Color**

**Hex(5C4040)**

# Conversions

## Conversions Part 1

| <b>Format</b> | <b>Color</b>             |
|---------------|--------------------------|
| Hex           | 5C4040                   |
| RGB           | 92, 64, 64               |
| RGB Percent   | 36%, 25%, 25%            |
| CMY           | 0.6392, 0.7490, 0.7490   |
| CMYK          | 0.00, 0.30, 0.30, 0.64   |
| HSL           | 0°, 18%, 31%             |
| HSV           | 0°, 30%, 36%             |
| XYZ           | 7.1724, 6.3123, 5.6908   |
| YIQ           | 72.3720, 16.6880, 5.9360 |

# Conversions

## Conversions Part 2

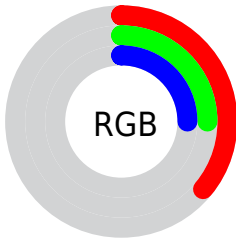
| <b>Format</b>                       | <b>Color</b>                 |
|-------------------------------------|------------------------------|
| <b>RYB</b>                          | 92, 64, 64                   |
| Decimal                             | 6045760                      |
| CIELab                              | 30.19, 12.21, 4.86           |
| CIElCh                              | 30, 13.139, 21.689           |
| Yxy                                 | 6.3123, 0.3740,<br>0.3292    |
| Android<br>(android.graphics.Color) | 4284235840<br>(0xFF5C4040)   |
| YUV                                 | 72.3720, -4.1274,<br>17.2138 |
| Hunter-Lab                          | 25.1242, 6.9906,<br>4.1573   |

# Details

The Hex color **5C4040** is a dark color, and the websafe version is hex **663333**. A complement of this color would be **405C5C**, and the grayscale version is **484848**.

A 20% lighter version of the original color is **8F7070**, and **2D1516** is the 20% darker color. If you saturate the color by 10%, you get **5C3737**, and if you desaturate by 10%, it is **5C4949**.

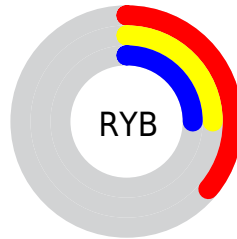
# Distribution



Red (36%)

Green (25%)

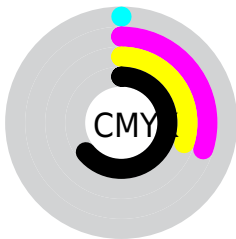
Blue (25%)



Red (36%)

Yellow (25%)

Blue (25%)

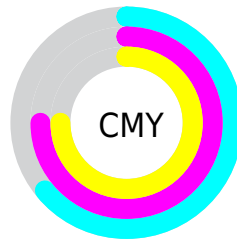


Cyan (0%)

Magenta (30%)

Yellow (30%)

Black (64%)



Cyan (64%)

Magenta (75%)

Yellow (75%)

# Brightness & Saturation Gradients

These gradients show how the Hex color 5C4040 changes by changing the brightness by 10 percent. The first figure shows a shift by +10% for each color and the second figure -10%.

Similar to the brightness gradients but the following saturation gradients show a change of the Hex color 5C4040 by changing the saturation by 10% instead.



■ 5C4040

■ 5C4040

FFFFFF

■ 442A2A

■ 8F7070

■ 2D1516

■ AA8989

■ 190000

■ C5A4A3

■ 000000

■ E1BFBE

■ FEDBDA

■ FFF7F7

■ 5C4040

■ 5C4040

■ 5C3737

■ 5C4949

 5C2E2E

 5C5252

 5C2424

 5C5C5C

 5C1B1B

 5C6565

 5C1212

 5C6E6E

 5C0909

 5C7777

 5C0000

 5C8080

 5C8A8A

 5C9393

# Harmonies

## Analogous

The Analogous color harmony consists of three colors that are next to each other on the color wheel.



5A404A



5C4040



594237

# Triad

The Triadic color harmony groups three colors that are evenly spaced from another and form a triangle on the color wheel.



5C4040



3B4B3A



37495B

# Complementary

The Complementary color scheme is a pair of colors which are on the opposite of each other on the color wheel.



5C4040



405C5C

# Split Complementary

Split-complementary colors differ from the complementary color scheme. The scheme consists of three colors, the original color and two neighbors of the complement color.



2C4B57



5C4040



304D44

# Square

The Square scheme is like the rectangle color scheme, but the four colors are evenly spaced on the color wheel.



5C4040



474934



2A4D4E



45455A

# Rectangle

The Rectangle color scheme consists of four colors that form a rectangle on the color wheel.



5C4040



544434



2A4D4E



334A5A



# Sweetspot

The Sweet Spot groups the original color and five complimentary colors.



5C4040



786D6D



5C405C



3D3636



BDBDBD



3D3D3D



# Same Dimension

The Same Dimension uses a secret algorithm to generate beautiful new colors.



5C4040



784C4C



5C4E40



2E2929



6E0000



ED0000



# Inverse Universe

The Inverse Universe completely reimagines the original color for something new.



405C5C



4C7878



404E5C



292E2E



006E6E

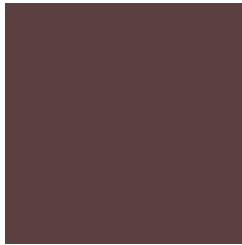


00EDED



# Previews

## White Background



This preview shows how the Hex color 5C4040 looks on a white background.

## Color Contrast Check

Large Text (above 18pt) WCAG AA ✓ Pass

Any Text WCAG AA ✓ Pass

Large Text (above 18pt) WCAG AAA ✓ Pass

Any Text WCAG AAA ✓ Pass

# Black Background



## Color Contrast Check

Large Text (above 18pt) WCAG AA × Fail

Any Text WCAG AA × Fail

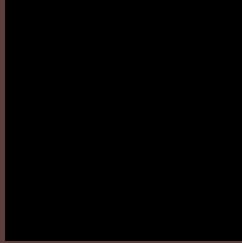
Large Text (above 18pt) WCAG AAA × Fail

Any Text WCAG AAA × Fail

If you want to check with other color combinations, try the [Color Contrast Checker](#).



## Hex 5C4040 Background



This preview shows how black text looks on a background with the Hex color 5C4040.

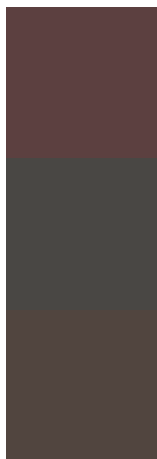


This preview shows how white text looks on a background with the Hex color 5C4040.

# Color Blindness Simulation

Color vision deficiency is a very complex topic, and I could not describe the different causes any better than Wikipedia does, so if you want to learn more, you should check out their [article about color blindness](#).

## Dichromacy



**Original Color**  
5C4040

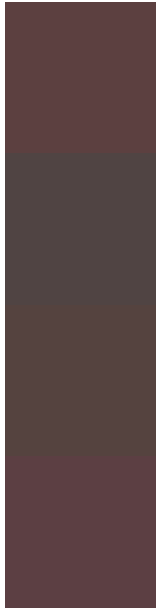
**Protanopia**  
494744

**Deuteranopia**  
51453F



**Tritanopia**  
5C3F44

# Trichromacy



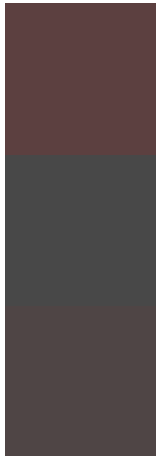
**Original Color**  
5C4040

**Protanomaly**  
504443

**Deuteranomaly**  
55433F

**Tritanomaly**  
5C3F43

# Monochromacy



**Original Color**  
5C4040

**Achromatopsia**  
484848

**Achromatomaly**  
4F4545

# CSS Examples

## Text

The CSS property to change the color of the text to Hex 5C4040 is called "color". The color property can be set on classes, ids or directly on the HTML element.

This example shows how text in the color #5C4040 looks like.

```
.text, #text, p{  
    color:#5C4040  
}
```

If you want to add a text shadow in that color use the text-shadow property, you can generate a text shadow directly with our [CSS Text Shadow Generator](#).

Here you see how black text with a 4 pixel #5C4040 colored shadow looks like.

```
.shadow{ text-shadow: 4px 4px 2px #5C4040
}
```

## Border

The CSS property to change the border of an element to Hex 5C4040 is called "border". The border property can be set on classes, ids or directly on the HTML element.

This example shows the color as border, it can be applied via the CSS property "border" or "border-color".

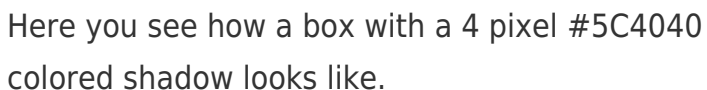
```
.border, #border, table{ border:4px solid
#5C4040 }
```

If only the border color should be changed use the property `border-color`.

```
.border{ border-color:#5C4040 }
```

If you want to add a box shadow in that color use:

Here you see how a box with a 4 pixel #5C4040 colored shadow looks like.



```
.boxshadow{ -moz-box-shadow:4px 4px 4px  
4px #5C4040; -webkit-box-shadow:4px 4px  
4px 4px #5C4040; box-shadow:4px 4px 4px  
4px #5C4040 }
```

# Background

The CSS property to change the background color of an element to Hex 5C4040 is called "background". The background property can be set on classes, ids or directly on the HTML element.

```
.background, #background, body{  
background:#5C4040 }
```

If only the background color should be changed can be used:

```
.background{ background-color:#5C4040 }
```

This example shows the color as background, it is applied via the CSS property "background".

To optimize and compress your CSS code, you can use our [online CSS compressor and optimizer](#) based on csstidy. If you want to create a linear or radial gradient as background or border, check our [CSS Gradient Generator](#).



Hey! You found this booklet interesting? Support Converting Colors with the new Membership Option!

The pro membership hides all ads, plus gives you double the colors in the color bucket, and more awesome pro features!

**[Learn more, Memberships starting at \\$2.50/m!](#)**

**Follow me  
on Twitter!**

@ConvertingColor