

# Converting Colors

Hex(5C434B)

Have a look what the booklet for  
Hex(5C434B) contains.

<b>Hex(5C434B)</b> .....	3
<b><i>Conversions</i></b> .....	4
<b><i>Details</i></b> .....	6
<b><i>Harmonies</i></b> .....	11
<b><i>Previews</i></b> .....	23
<b><i>Color Blindness Simulation</i></b> .....	26
<b><i>CSS Examples</i></b> .....	29

**Color**

**Hex(5C434B)**

# Conversions

## Conversions Part 1

Format	Color
Hex	5C434B
RGB	92, 67, 75
RGB Percent	36%, 26%, 29%
CMY	0.6392, 0.7373, 0.7059
CMYK	0.00, 0.27, 0.18, 0.64
HSL	341°, 16%, 31%
HSV	341°, 27%, 36%
XYZ	7.6908, 6.7976, 7.5633
YIQ	75.3870, 12.3320, 7.7880

# Conversions

## Conversions Part 2

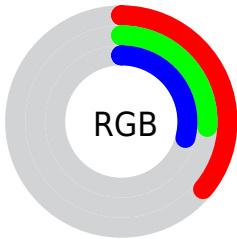
<b>Format</b>	<b>Color</b>
<b>RYB</b>	92, 67, 75
Decimal	6046539
CIELab	31.34, 12.20, -0.59
CIElCh	31, 12.218, 357.228
Yxy	6.7976, 0.3488, 0.3083
Android (android.graphics.Color)	4284236619 (0xFF5C434B)
YUV	75.3870, -0.1908, 14.5696
Hunter-Lab	26.0722, 7.0275, 1.0511

# Details

The Hex color **5C434B** is a dark color, and the websafe version is hex **663333**. A complement of this color would be **435C54**, and the grayscale version is **4B4B4B**.

A 20% lighter version of the original color is **8F737C**, and **2D181F** is the 20% darker color. If you saturate the color by 10%, you get **5C3A45**, and if you desaturate by 10%, it is **5C4C51**.

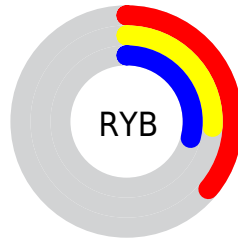
# Distribution



Red (36%)

Green (26%)

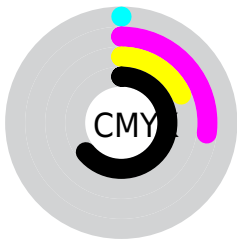
Blue (29%)



Red (36%)

Yellow (26%)

Blue (29%)

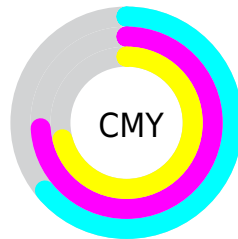


Cyan (0%)

Magenta (27%)

Yellow (18%)

Black (64%)



Cyan (64%)

Magenta (74%)

Yellow (71%)

# Brightness & Saturation Gradients

These gradients show how the Hex color 5C434B changes by changing the brightness by 10 percent. The first figure shows a shift by +10% for each color and the second figure -10%.

Similar to the brightness gradients but the following saturation gradients show a change of the Hex color 5C434B by changing the saturation by 10% instead.



■ 5C434B

■ 5C434B

FFFFFF

■ 442D34

■ 8F737C

■ 2D181F

■ A98D95

■ 1B0007

■ C5A7B0

■ 000000

■ E1C2CC

■ FDDEE8

■ FFFBFF

■ 5C434B

■ 5C434B

■ 5C3A45

■ 5C4C51

■ 5C313E

■ 5C5558

■ 5C2738

■ 5C5F5E

■ 5C1E32

■ 5C6864

■ 5C152C

■ 5C716A

■ 5C0C25

■ 5C7A71

■ 5C031F

■ 5C8377

■ 5C001D

■ 5C8D7D

■ 5C9683

# Harmonies

## Analogous

The Analogous color harmony consists of three colors that are next to each other on the color wheel.



554554



5C434B



5D4341

# Triad

The Triadic color harmony groups three colors that are evenly spaced from another and form a triangle on the color wheel.



5C434B



484C39



334D59

# Complementary

The Complementary color scheme is a pair of colors which are on the opposite of each other on the color wheel.



5C434B



435C54

# Split Complementary

Split-complementary colors differ from the complementary color scheme. The scheme consists of three colors, the original color and two neighbors of the complement color.



2F4F52



5C434B



3D4E3F

# Square

The Square scheme is like the rectangle color scheme, but the four colors are evenly spaced on the color wheel.



5C434B



524937



334F48



3D4B5D

# Rectangle

The Rectangle color scheme consists of four colors that form a rectangle on the color wheel.



5C434B



5B453C



334F48



304E57



# Sweetspot

The Sweet Spot groups the original color and five complimentary colors.



5C434B



786E71



54435C



3D3739



BDBDBD



3D3D3D



# Same Dimension

The Same Dimension uses a secret algorithm to generate beautiful new colors.



5C434B



78505D



5C4743



2E292B



6E0023



ED004C



# Inverse Universe

The Inverse Universe completely reimagines the original color for something new.



5C434B



78505D



43585C



2E292B



6E0023

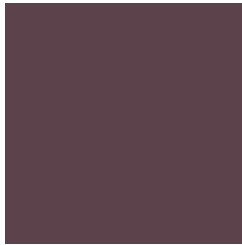


ED004C



# Previews

## White Background



This preview shows how the Hex color 5C434B looks on a white background.

## Color Contrast Check

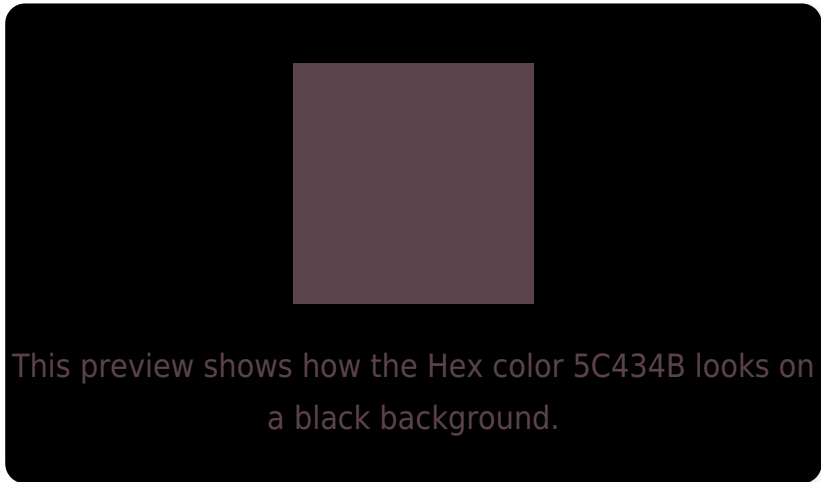
Large Text (above 18pt) WCAG AA ✓ Pass

Any Text WCAG AA ✓ Pass

Large Text (above 18pt) WCAG AAA ✓ Pass

Any Text WCAG AAA ✓ Pass

# Black Background



## Color Contrast Check

Large Text (above 18pt) WCAG AA × Fail

Any Text WCAG AA × Fail

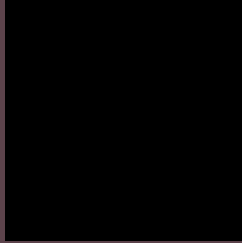
Large Text (above 18pt) WCAG AAA × Fail

Any Text WCAG AAA × Fail

If you want to check with other color combinations, try the [Color Contrast Checker](#).



## Hex 5C434B Background



This preview shows how black text looks on a background with the Hex color 5C434B.



This preview shows how white text looks on a background with the Hex color 5C434B.

# Color Blindness Simulation

Color vision deficiency is a very complex topic, and I could not describe the different causes any better than Wikipedia does, so if you want to learn more, you should check out their [article about color blindness](#).


## Dichromacy



**Original Color**  
5C434B

**Protanopia**  
4A4A4F

**Deuteranopia**  
51484A



**Tritanopia**  
5C4349

# Trichromacy



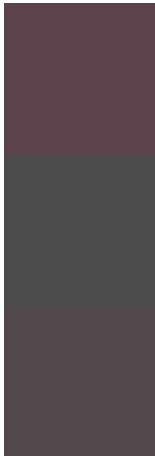
**Original Color**  
5C434B

**Protanomaly**  
51474E

**Deuteranomaly**  
55464A

**Tritanomaly**  
5C434A

# Monochromacy



**Original Color**  
5C434B

**Achromatopsia**  
4B4B4B

**Achromatomaly**  
51484B

# CSS Examples

## Text

The CSS property to change the color of the text to Hex 5C434B is called "color". The color property can be set on classes, ids or directly on the HTML element.

This example shows how text in the color #5C434B looks like.

```
.text, #text, p{  
    color:#5C434B  
}
```

If you want to add a text shadow in that color use the text-shadow property, you can generate a text shadow directly with our [CSS Text Shadow Generator](#).

Here you see how black text with a 4 pixel #5C434B colored shadow looks like.

```
.shadow{ text-shadow: 4px 4px 2px #5C434B
}
```

## Border

The CSS property to change the border of an element to Hex 5C434B is called "border". The border property can be set on classes, ids or directly on the HTML element.

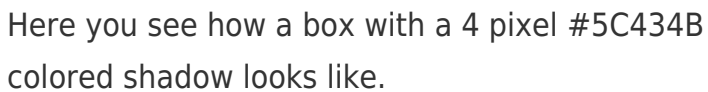
This example shows the color as border, it can be applied via the CSS property "border" or "border-color".

```
.border, #border, table{ border:4px solid
#5C434B }
```

If only the border color should be changed use the property `border-color`.

```
.border{ border-color:#5C434B }
```

If you want to add a box shadow in that color use:



Here you see how a box with a 4 pixel #5C434B colored shadow looks like.

```
.boxshadow{ -moz-box-shadow:4px 4px 4px  
4px #5C434B; -webkit-box-shadow:4px 4px  
4px 4px #5C434B; box-shadow:4px 4px 4px  
4px #5C434B }
```

# Background

The CSS property to change the background color of an element to Hex 5C434B is called "background". The background property can be set on classes, ids or directly on the HTML element.

```
.background, #background, body{  
background:#5C434B }
```

If only the background color should be changed can be used:

```
.background{ background-color:#5C434B }
```

This example shows the color as background, it is applied via the CSS property "background".

To optimize and compress your CSS code, you can use our [online CSS compressor and optimizer](#) based on csstidy. If you want to create a linear or radial gradient as background or border, check our [CSS Gradient Generator](#).



Hey! You found this booklet interesting? Support Converting Colors with the new Membership Option!

The pro membership hides all ads, plus gives you double the colors in the color bucket, and more awesome pro features!

**[Learn more, Memberships starting at \\$2.50/m!](#)**

**Follow me  
on Twitter!**

@ConvertingColor