

Converting Colors

Hex(5C4C43)

Have a look what the booklet for
Hex(5C4C43) contains.

Hex(5C4C43)	3
<i>Conversions</i>	4
<i>Details</i>	6
<i>Harmonies</i>	11
<i>Previews</i>	23
<i>Color Blindness Simulation</i>	26
<i>CSS Examples</i>	29

Color

Hex(5C4C43)

Conversions

Conversions Part 1

Format	Color
Hex	5C4C43
RGB	92, 76, 67
RGB Percent	36%, 30%, 26%
CMY	0.6392, 0.7020, 0.7373
CMYK	0.00, 0.17, 0.27, 0.64
HSL	22°, 16%, 31%
HSV	22°, 27%, 36%
XYZ	8.0112, 7.8494, 6.4030
YIQ	79.7580, 12.4250, 0.5930

Conversions

Conversions Part 2

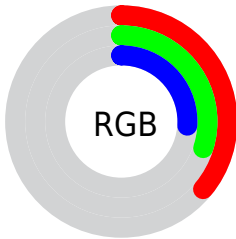
Format	Color
RYB	92, 81, 67
Decimal	6048835
CIELab	33.67, 5.14, 7.86
CIELCh	34, 9.391, 56.806
Yxy	7.8494, 0.3598, 0.3526
Android (android.graphics.Color)	4284238915 (0xFF5C4C43)
YUV	79.7580, -6.2897, 10.7362
Hunter-Lab	28.0169, 2.0111, 6.0615

Details

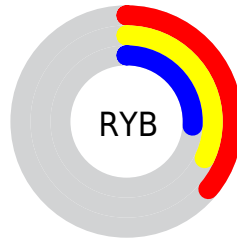
The Hex color **5C4C43** is a dark color, and the websafe version is hex **666666**. A complement of this color would be **43535C**, and the grayscale version is **505050**.

A 20% lighter version of the original color is **8F7D73**, and **2D2018** is the 20% darker color. If you saturate the color by 10%, you get **5C463A**, and if you desaturate by 10%, it is **5C524C**.

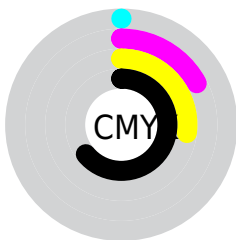
Distribution



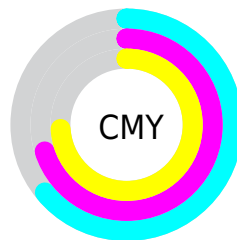
- Red (36%)
- Green (30%)
- Blue (26%)



- Red (36%)
- Yellow (32%)
- Blue (26%)



- Cyan (0%)
- Magenta (17%)
- Yellow (27%)
- Black (64%)



- Cyan (64%)
- Magenta (70%)
- Yellow (74%)

Brightness & Saturation Gradients

These gradients show how the Hex color 5C4C43 changes by changing the brightness by 10 percent. The first figure shows a shift by +10% for each color and the second figure -10%.

Similar to the brightness gradients but the following saturation gradients show a change of the Hex color 5C4C43 by changing the saturation by 10% instead.

■ 5C4C43

■ 5C4C43

FFFFFF

■ 44352D

■ 8F7D73

■ 2D2018

■ A9978C

■ 1A0900

■ C5B1A7

■ 000000

■ E1CDC2

■ FDE9DE

FFFFFFB

■ 5C4C43

■ 5C4C43

■ 5C463A

■ 5C524C

■ 5C4031

■ 5C5855

■ 5C3A27

■ 5C5E5F

■ 5C341E

■ 5C6468

■ 5C2F15

■ 5C6971

■ 5C290C

■ 5C6F7A

■ 5C2303

■ 5C7583

■ 5C2100

■ 5C7B8D

■ 5C8196

Harmonies

Analogous

The Analogous color harmony consists of three colors that are next to each other on the color wheel.



5F4A49



5C4C43



564E40

Triad

The Triadic color harmony groups three colors that are evenly spaced from another and form a triangle on the color wheel.



5C4C43



3E534E



504E5C

Complementary

The Complementary color scheme is a pair of colors which are on the opposite of each other on the color wheel.



5C4C43



43535C

Split Complementary

Split-complementary colors differ from the complementary color scheme. The scheme consists of three colors, the original color and two neighbors of the complement color.



46505E



5C4C43



3C5356

Square

The Square scheme is like the rectangle color scheme, but the four colors are evenly spaced on the color wheel.



5C4C43



455347



3E525B



584B57

Rectangle

The Rectangle color scheme consists of four colors that form a rectangle on the color wheel.



5C4C43



515041



3E525B



4C4E5D

Sweetspot

The Sweet Spot groups the original color and five complimentary colors.



5C4C43



78726E



5C4353



3D3937



BDBDBD



3D3D3D

Same Dimension

The Same Dimension uses a secret algorithm to generate beautiful new colors.



5C4C43



785F50



5C5843



2E2B29



6E2700



ED5500

Inverse Universe

The Inverse Universe completely reimagines the original color for something new.



43535C



506A78



43475C



292C2E



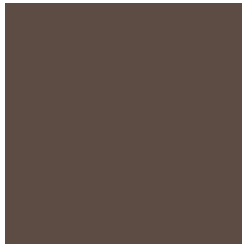
00466E



0098ED

Previews

White Background



This preview shows how the Hex color 5C4C43 looks on a white background.

Color Contrast Check

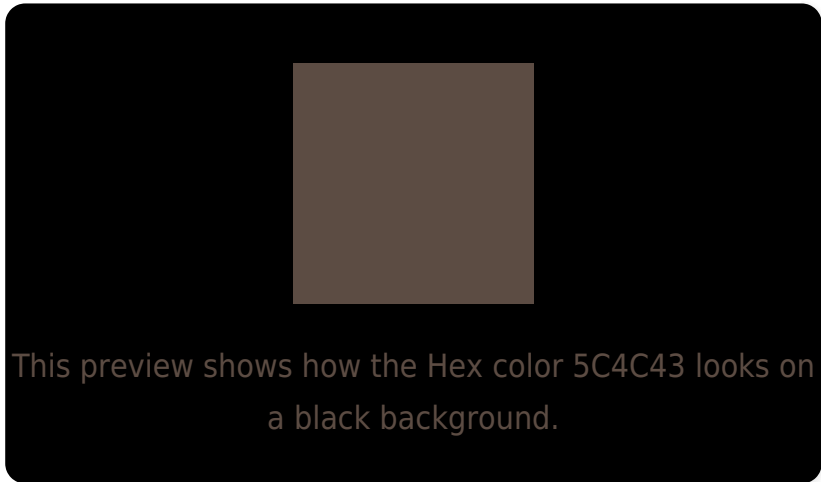
Large Text (above 18pt) WCAG AA ✓ Pass

Any Text WCAG AA ✓ Pass

Large Text (above 18pt) WCAG AAA ✓ Pass

Any Text WCAG AAA ✓ Pass

Black Background



Color Contrast Check

Large Text (above 18pt) WCAG AA × Fail

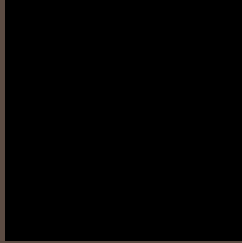
Any Text WCAG AA × Fail

Large Text (above 18pt) WCAG AAA × Fail

Any Text WCAG AAA × Fail

If you want to check with other color combinations, try the [Color Contrast Checker](#).

Hex 5C4C43 Background



This preview shows how black text looks on a background with the Hex color 5C4C43.



This preview shows how white text looks on a background with the Hex color 5C4C43.

Color Blindness Simulation

Color vision deficiency is a very complex topic, and I could not describe the different causes any better than Wikipedia does, so if you want to learn more, you should check out their [article about color blindness](#).

Dichromacy



Original Color
5C4C43

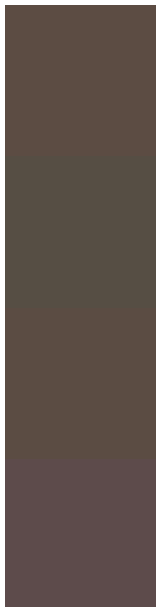
Protanopia
534F45

Deuteranopia
5B4C43



Tritanopia
5D4A50

Trichromacy



Original Color

5C4C43

Protanomaly

564E44

Deuteranomaly

5B4C43

Tritanomaly

5D4B4B

Monochromacy



Original Color

5C4C43

Achromatopsia

505050

Achromatomaly

544F4B

CSS Examples

Text

The CSS property to change the color of the text to Hex 5C4C43 is called "color". The color property can be set on classes, ids or directly on the HTML element.

This example shows how text in the color #5C4C43 looks like.

```
.text, #text, p{  
    color:#5C4C43  
}
```

If you want to add a text shadow in that color use the text-shadow property, you can generate a text shadow directly with our [CSS Text Shadow Generator](#).

Here you see how black text with a 4 pixel #5C4C43 colored shadow looks like.

```
.shadow{ text-shadow: 4px 4px 2px #5C4C43
}
```

Border

The CSS property to change the border of an element to Hex 5C4C43 is called "border". The border property can be set on classes, ids or directly on the HTML element.

This example shows the color as border, it can be applied via the CSS property "border" or "border-color".

```
.border, #border, table{ border:4px solid
#5C4C43 }
```

If only the border color should be changed use the property `border-color`.

```
.border{ border-color:#5C4C43 }
```

If you want to add a box shadow in that color use:

Here you see how a box with a 4 pixel #5C4C43 colored shadow looks like.

```
.boxshadow{ -moz-box-shadow:4px 4px 4px  
4px #5C4C43; -webkit-box-shadow:4px 4px  
4px 4px #5C4C43; box-shadow:4px 4px 4px  
4px #5C4C43 }
```

Background

The CSS property to change the background color of an element to Hex 5C4C43 is called "background". The background property can be set on classes, ids or directly on the HTML element.

```
.background, #background, body{  
background:#5C4C43 }
```

If only the background color should be changed can be used:

```
.background{ background-color:#5C4C43 }
```

This example shows the color as background, it is applied via the CSS property "background".

To optimize and compress your CSS code, you can use our [online CSS compressor and optimizer](#) based on csstidy. If you want to create a linear or radial gradient as background or border, check our [CSS Gradient Generator](#).

Hey! You found this booklet interesting? Support Converting Colors with the new Membership Option!

The pro membership hides all ads, plus gives you double the colors in the color bucket, and more awesome pro features!

[Learn more, Memberships starting at \\$2.50/m!](#)

**Follow me
on Twitter!**

@ConvertingColor