

# Converting Colors

Hex(5C504A)

Have a look what the booklet for  
Hex(5C504A) contains.

<b>Hex(5C504A)</b> .....	3
<b><i>Conversions</i></b> .....	4
<b><i>Details</i></b> .....	6
<b><i>Harmonies</i></b> .....	11
<b><i>Previews</i></b> .....	23
<b><i>Color Blindness Simulation</i></b> .....	26
<b><i>CSS Examples</i></b> .....	29

# Color

**Hex(5C504A)**

# Conversions

## Conversions Part 1

Format	Color
Hex	5C504A
RGB	92, 80, 74
RGB Percent	36%, 31%, 29%
CMY	0.6392, 0.6863, 0.7098
CMYK	0.00, 0.13, 0.20, 0.64
HSL	20°, 11%, 33%
HSV	20°, 20%, 36%
XYZ	8.5183, 8.5070, 7.6716
YIQ	82.9040, 9.0780, 0.6780

# Conversions

## Conversions Part 2

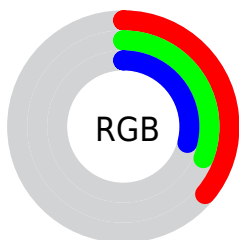
Format	Color
<a href="#">RYB</a>	<a href="#">92, 83, 74</a>
Decimal	<a href="#">6049866</a>
CIELab	<a href="#">35.02, 3.85, 5.36</a>
CIELCh	<a href="#">35, 6.599, 54.262</a>
Yxy	<a href="#">8.5070, 0.3449, 0.3445</a>
Android (android.graphics.Color)	<a href="#">4284239946</a> (0xFF5C504A)
YUV	<a href="#">82.9040, -4.3897, 7.9772</a>
Hunter-Lab	<a href="#">29.1668, 1.0899, 4.8220</a>

# Details

The Hex color **5C504A** is a dark color, and the websafe version is hex **666666**. A complement of this color would be **4A565C**, and the grayscale version is **535353**.

A 20% lighter version of the original color is **8E817B**, and **2E241E** is the 20% darker color. If you saturate the color by 10%, you get **5C4A41**, and if you desaturate by 10%, it is **5C5653**.

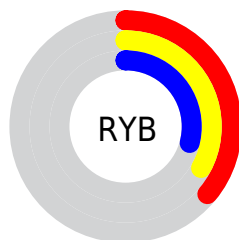
# Distribution



Red (36%)

Green (31%)

Blue (29%)



Red (36%)

Yellow (33%)

Blue (29%)

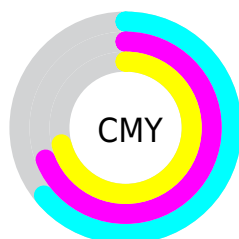


Cyan (0%)

Magenta (13%)

Yellow (20%)

Black (64%)



Cyan (64%)

Magenta (69%)

Yellow (71%)

# Brightness & Saturation Gradients

These gradients show how the Hex color 5C504A changes by changing the brightness by 10 percent. The first figure shows a shift by +10% for each color and the second figure -10%.

Similar to the brightness gradients but the following saturation gradients show a change of the Hex color 5C504A by changing the saturation by 10% instead.





5C504A



5C504A

FFFFFF



443933



8E817B



2E241E



A99B94



1A0E05



C4B6AF



000000



E0D2CA



FDEEE7



5C504A



5C504A



5C4A41



5C5653



5C4438



5C5C5C

 5C3E2E

 5C6266

 5C3725

 5C696F

 5C311C

 5C6F78

 5C2B13

 5C7581

 5C250A

 5C7B8A

 5C1F00

 5C8194

 5C879D

# Harmonies

## Analogous

The Analogous color harmony consists of three colors that are next to each other on the color wheel.



5E4F4E



5C504A



585248

# Triad

The Triadic color harmony groups three colors that are evenly spaced from another and form a triangle on the color wheel.



5C504A



475551



52515C

# Complementary

The Complementary color scheme is a pair of colors which are on the opposite of each other on the color wheel.



5C504A



4A565C

# Split Complementary

Split-complementary colors differ from the complementary color scheme. The scheme consists of three colors, the original color and two neighbors of the complement color.



4C535D



5C504A



455556

# Square

The Square scheme is like the rectangle color scheme, but the four colors are evenly spaced on the color wheel.



5C504A



4C554C



47555B



585059

# Rectangle

The Rectangle color scheme consists of four colors that form a rectangle on the color wheel.



5C504A



545348



47555B



50525C



# Sweetspot

The Sweet Spot groups the original color and five complimentary colors.



5C504A



787371



5C4A56



3D3A39



BDBDBD



3D3D3D



# Same Dimension

The Same Dimension uses a secret algorithm to generate beautiful new colors.



5C504A



78655C



5C594A



2E2B29



6E2500



ED4F00



# Inverse Universe

The Inverse Universe completely reimagines the original color for something new.



4A565C



5C6F78



4A4D5C



292C2E



00496E

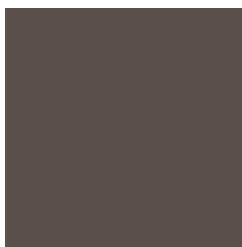


009EED



# Previews

## White Background



This preview shows how the Hex color 5C504A looks on a white background.

## Color Contrast Check

Large Text (above 18pt) WCAG AA ✓ Pass

Any Text WCAG AA ✓ Pass

Large Text (above 18pt) WCAG AAA ✓ Pass

Any Text WCAG AAA ✓ Pass

# Black Background



This preview shows how the Hex color 5C504A looks on a black background.

## Color Contrast Check

Large Text (above 18pt) WCAG AA × Fail

Any Text WCAG AA × Fail

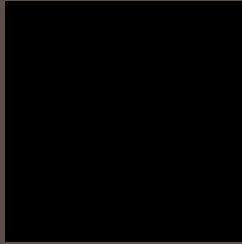
Large Text (above 18pt) WCAG AAA × Fail

Any Text WCAG AAA × Fail

If you want to check with other color combinations, try the [Color Contrast Checker](#).



## Hex 5C504A Background



This preview shows how black text looks on a background with the Hex color 5C504A.



This preview shows how white text looks on a background with the Hex color 5C504A.

# Color Blindness Simulation

Color vision deficiency is a very complex topic, and I could not describe the different causes any better than Wikipedia does, so if you want to learn more, you should check out their [article about color blindness](#).

## Dichromacy



**Original Color**

5C504A

**Protanopia**

56524B

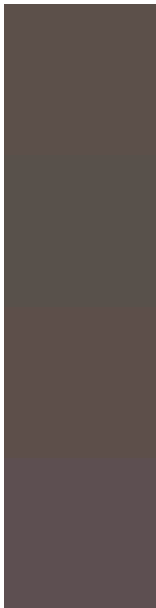
**Deuteranopia**

5D4F4A



**Tritanopia**  
5D4E55

# Trichromacy



**Original Color**  
5C504A

**Protanomaly**  
58514B

**Deuteranomaly**  
5D4F4A

**Tritanomaly**  
5D4F51

# Monochromacy



**Original Color**  
5C504A

**Achromatopsia**  
535353

**Achromatomaly**  
565250

# CSS Examples

## Text

The CSS property to change the color of the text to Hex 5C504A is called "color". The color property can be set on classes, ids or directly on the HTML element.

This example shows how text in the color #5C504A looks like.

```
.text, #text, p{  
    color:#5C504A  
}
```

If you want to add a text shadow in that color use the text-shadow property, you can generate a text shadow directly with our [CSS Text Shadow Generator](#).

Here you see how black text with a 4 pixel #5C504A colored shadow looks like.

```
.shadow{ text-shadow: 4px 4px 2px #5C504A
}
```

## Border

The CSS property to change the border of an element to Hex 5C504A is called "border". The border property can be set on classes, ids or directly on the HTML element.

This example shows the color as border, it can be applied via the CSS property "border" or "border-color".

```
.border, #border, table{ border:4px solid
#5C504A }
```

If only the border color should be changed use the property `border-color`.

```
.border{ border-color:#5C504A }
```

If you want to add a box shadow in that color use:

Here you see how a box with a 4 pixel #5C504A colored shadow looks like.

```
.boxshadow{ -moz-box-shadow:4px 4px 4px  
4px #5C504A; -webkit-box-shadow:4px 4px  
4px 4px #5C504A; box-shadow:4px 4px 4px  
4px #5C504A }
```

# Background

The CSS property to change the background color of an element to Hex 5C504A is called "background". The background property can be set on classes, ids or directly on the HTML element.

```
.background, #background, body{  
background:#5C504A }
```

If only the background color should be changed can be used:

```
.background{ background-color:#5C504A }
```

This example shows the color as background, it is applied via the CSS property "background".

To optimize and compress your CSS code, you can use our [online CSS compressor and optimizer](#) based on csstidy. If you want to create a linear or radial gradient as background or border, check our [CSS Gradient Generator](#).



Hey! You found this booklet  
interesting? Support Converting  
Colors with the new Membership  
Option!

The pro membership hides all ads, plus gives you  
double the colors in the color bucket, and more  
awesome pro features!

**[Learn more, Memberships starting at \\$2.50/m!](#)**

**Follow me  
on Twitter!**

@ConvertingColor